



# **Repus MagiCAD Plugin for AutoCAD**

User guide

23/03/2020

## Content

<b>1</b>	<b>ABOUT THIS DOCUMENT .....</b>	<b>3</b>
1.1	Installing the software.....	3
1.1.1	Required third-party software .....	3
1.1.2	Installation .....	3
<b>2</b>	<b>STARTING THE PROGRAM.....</b>	<b>4</b>
<b>3</b>	<b>HOW TO USE THE PLUGIN .....</b>	<b>6</b>
3.1	Nozzle duct.....	6
3.2	Displacement diffuser.....	9

## 1 About this document

This document contains instructions on using plugin *Repus MagiCAD Plugin*. *Repus MagiCAD Plugin* is a Web-based extension to MagiCAD software.

### 1.1 Installing the software

#### 1.1.1 Required third-party software

64-bit Repus MagiCAD Plugin works with the following MagiCAD for AutoCAD versions

- MagiCAD 2020 and AutoCAD 2015-2020
- MagiCAD 2021 and AutoCAD 2017-2020

#### 1.1.2 Installation

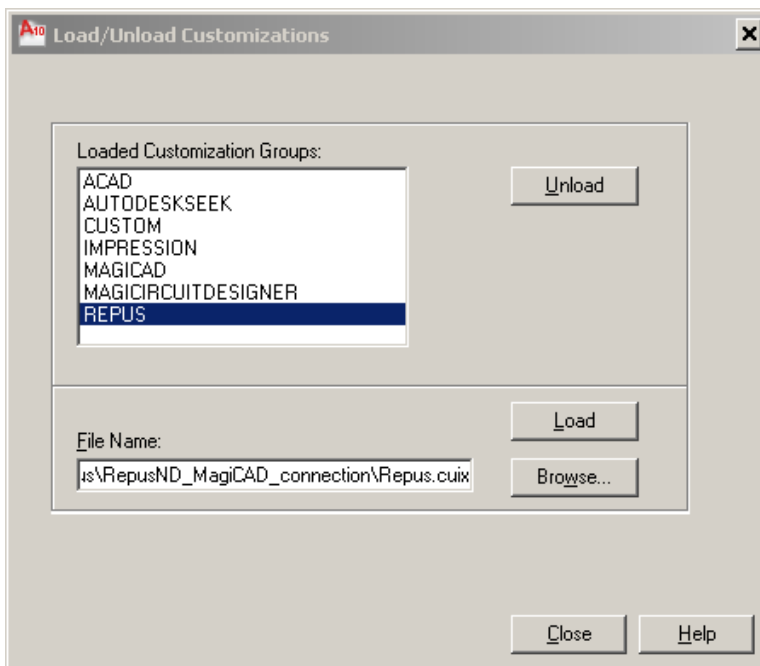
1. The installation package is available at MagiCAD's website  
<https://portal.magicad.com/download/ProductSearch?searchStr=repus&categoryId=3>
2. Run the Repus MagiCAD plug-in installer on your workstation

Administrator privileges are recommended for installation. **Note if you have several AutoCAD versions on your workstation:** Before you run the installation program, start MagiCAD to make sure that *Repus MagiCAD Plugin* installs on the same AutoCAD platform as MagiCAD.

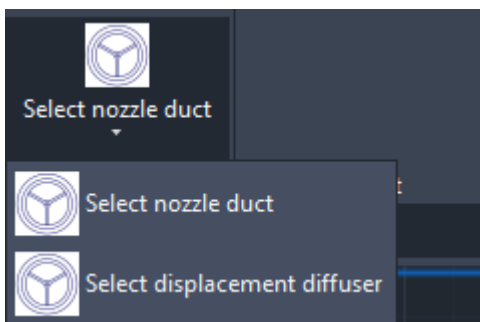
## 2 Starting the program

Before you start using *Repus MagiCAD Plugin*, start MagiCAD and open a Ventilation and Piping project.

If the plugin ribbon button or toolbar is not visible in AutoCAD, you need to load the customization file (.cuix) manually. Run **CULOAD** or **MENULOAD** in AutoCAD, and browse the customization file from the following directory: *C:\Users\All Users\Repus\RepusND MagiCAD plugin software (Windows 7)* or *C:\ProgramData\Repus\RepusND MagiCAD plugin software (Windows 8 / 10)*.



Locate the MagiCAD plugins tab from the AutoCAD ribbon. Once the Repus MagiCAD plugin is loaded, the ribbon panel for the plugin can be found from the MagiCAD plugins tab. When the drop-down button is clicked, the list of available operations will be shown.



Next time you use AutoCAD, the customization file is automatically loaded.

**Information for network administrators:**

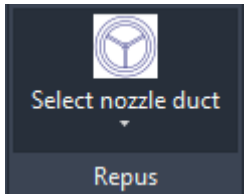
*Plugin requires connection to Repus web site. Internet Explorer control is used to browse web pages from [http://www.repus.se/repus/index.php?command=open\\_nozzle\\_duct\\_from\\_magicad](http://www.repus.se/repus/index.php?command=open_nozzle_duct_from_magicad)*

*Standard HTTP GET (TCP, default port 80 should be used) method is used to retrieve files from the server. GET response includes file (mime application/octet-stream). Your network firewall should allow such connections.*

### 3 How to use the plugin

#### 3.1 Nozzle duct

1. Start "Select nozzle duct" command from ribbon button.



Button starts the Repus Calculation Tool inside AutoCAD.

2. Select type of the nozzle duct.

Repus MagiCAD Plugin 2019.8.1

— □ ×




#### Repus configurator for MagiCAD

Choose duct type



OK

- After the type is selected, the user configures the nozzle duct and clicks "Calculate" button.



### Configure nozzle duct

Length A (m)

Connection diameter D (mm)

Spreading


End velocity jet (m/s)

Mounting height floor -> duct (m)

Delta temp (° C)

Max noise level  Units

Air flow  Units



- When the nozzle duct is successfully calculated, "Finish" button can be clicked and insert operation starts.

- Then the plugin asks user code from the user.

✕

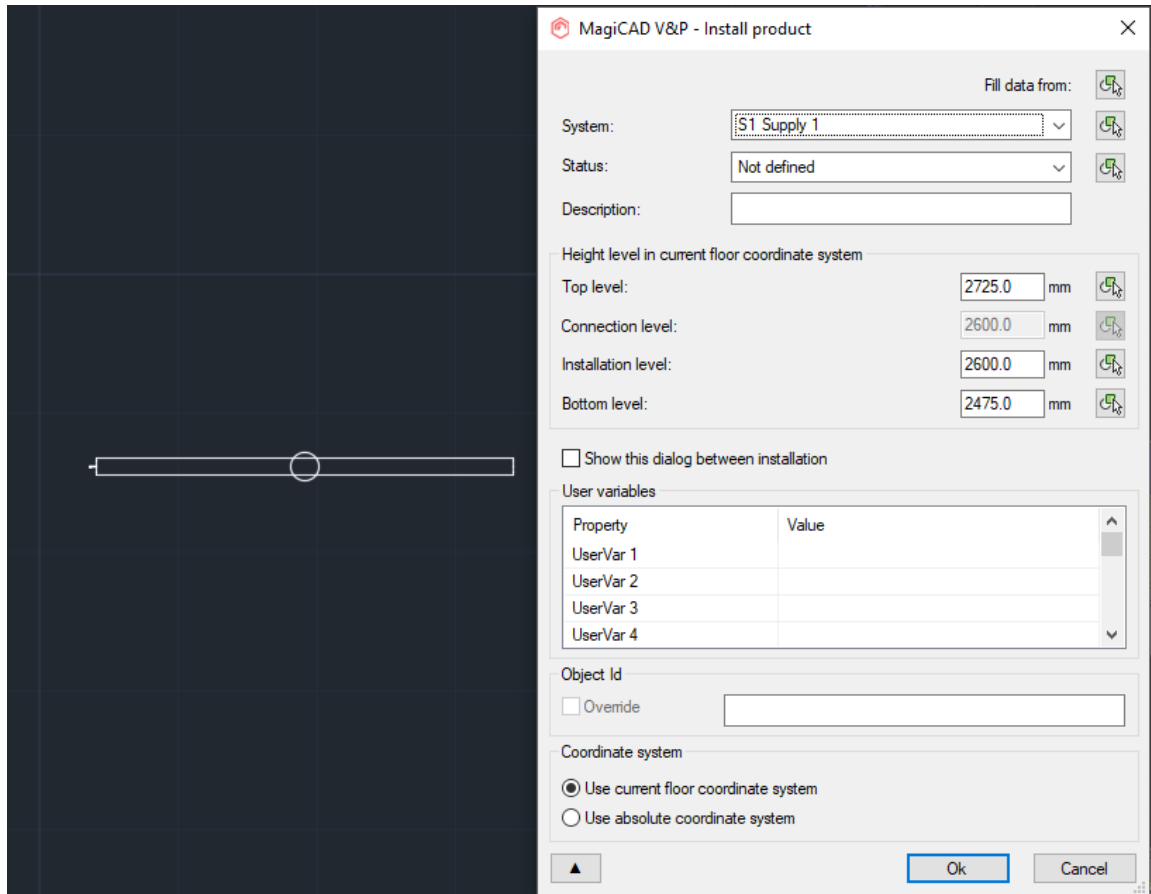
Repus MagiCAD Plugin 2019.8.1

Click Import to insert product from Repus Calculator.  
Click Cancel to close.

User code

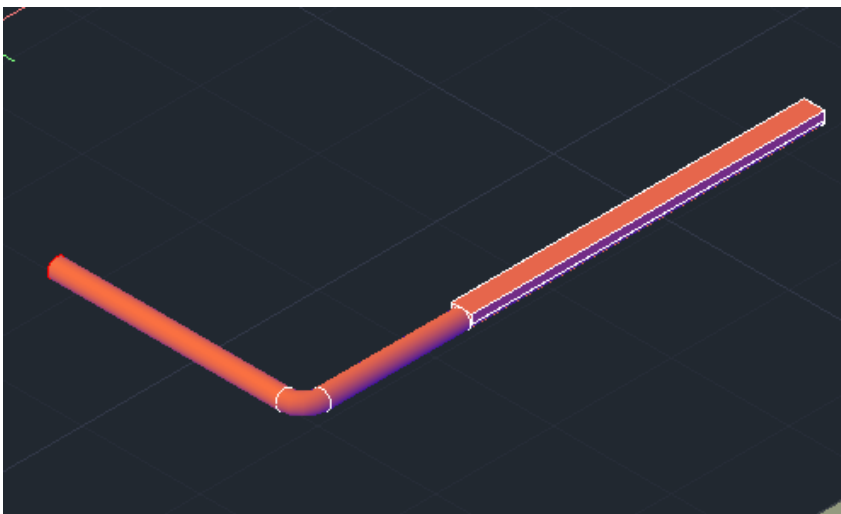
Please write "TD" number, for example TD123.

6. Show the position for the device and select the MagiCAD system.



Note! You can add more similar devices. After you have added all, please press ESC.

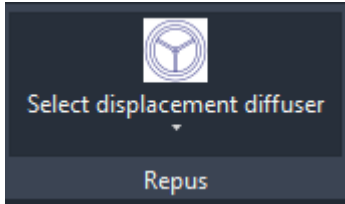
7. Continue with MagiCAD e.g. draw the duct and connect it to the device.





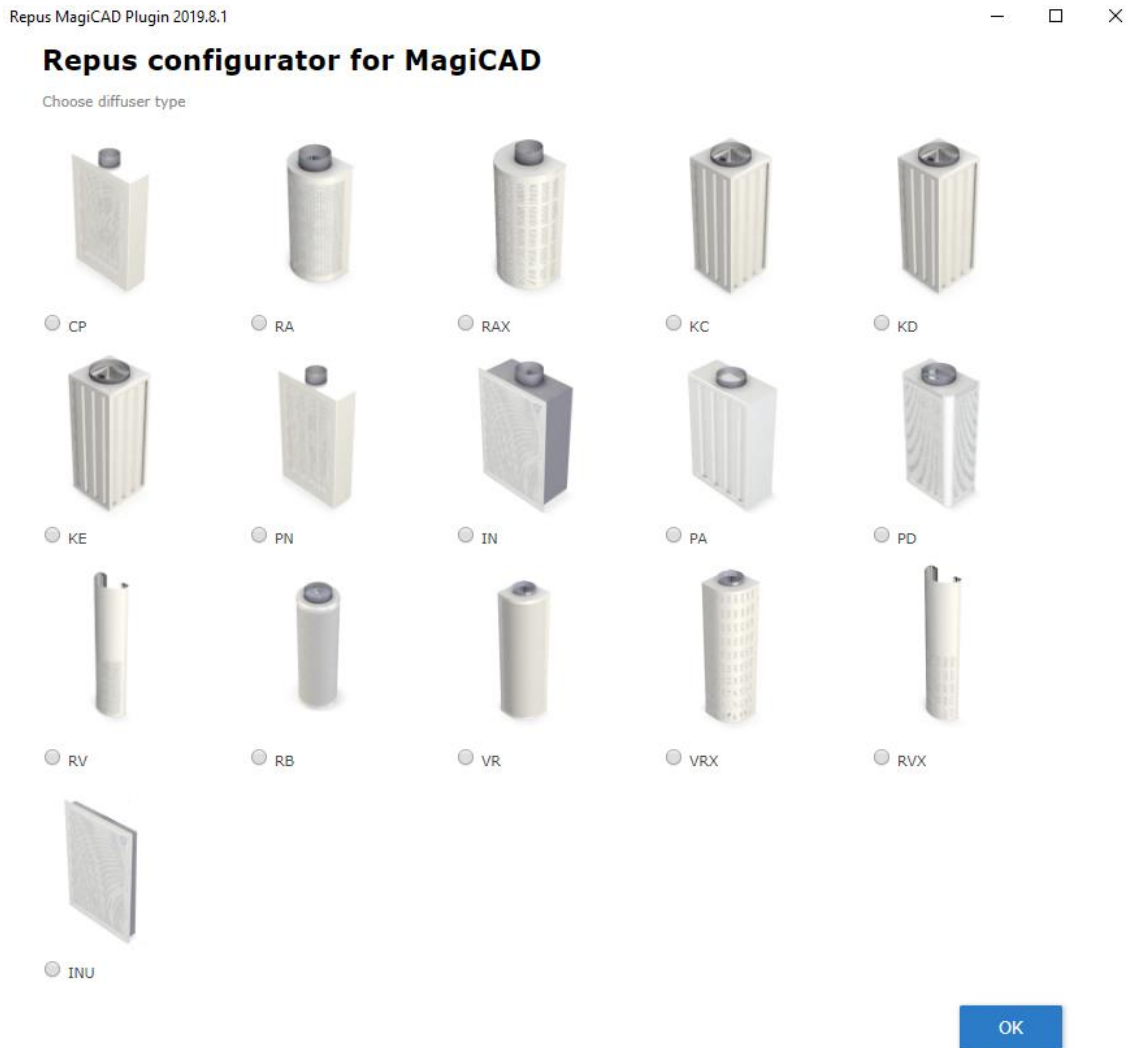
### 3.2 Displacement diffuser

1. Start "Select displacement diffuser" command from ribbon button.



Button starts the Repus Calculation Tool inside AutoCAD.

2. Select type of the displacement diffuser.



- After the type is selected, the user configures the diffuser and clicks "Calculate" button.

**Configure diffuser**

Product code  
CP

Dimension A (mm)  
750

Dimension B (mm)  
1650

Dimension C (mm)  
260

Connection type  
Circular

Diameter (mm)  
80

Connection placement  
Top

Quantity  
1

Air flow  
80

Units  
l/s

Cancel Calculate Finish

- When the diffuser is successfully calculated, "Finish" button can be clicked and insert operation starts.

Cancel Calculate Finish

- Then the plugin asks user code from the user.

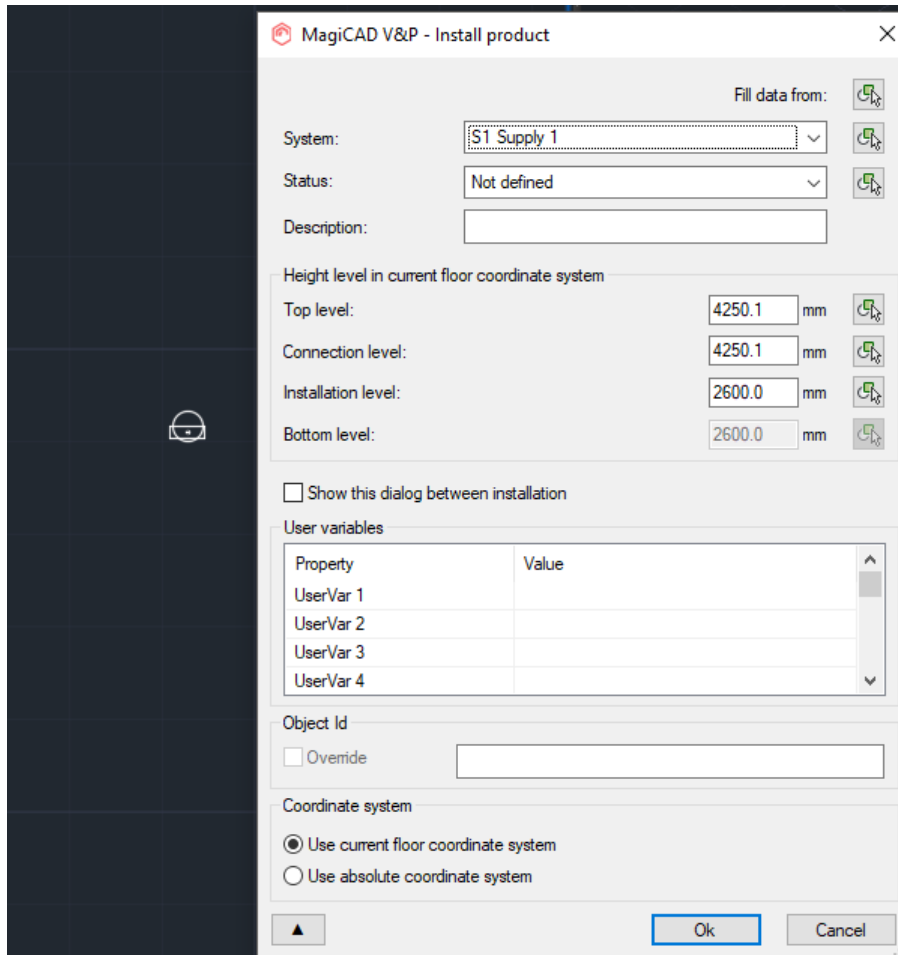
Repus MagiCAD Plugin 2019.8.1

Click Import to insert product from Repus Calculator.  
Click Cancel to close.

User code TD123 Import Cancel

Please write "TD" number, for example TD123.

6. Show the position for the device and select the MagiCAD system.



Note! You can add more similar devices. After you have added all, please press ESC.

7. Continue with MagiCAD e.g. draw the duct and connect it to the device.

