



Installation Guide

MagiCAD 2024 for AutoCAD 2021-2024

MagiCAD

TABLE OF CONTENTS

GENERAL	3
SELECTING INSTALLATION PACKAGE	3
UPDATING EXISTING SOFTWARE	4
BEFORE YOU INSTALL MAGICAD 2024	5
INSTALLING MAGICAD ON A SINGLE WORKSTATION	6
SETUP ARCHITECTURE	6
HOW TO CHECK THE INSTALLED MAGICAD RELEASE VERSION	11
LICENSING	11
USER SETTINGS UTILITY	11
PROGRAM DIRECTORY STRUCTURE OF MAGICAD	13
LOCATION OF FILES THAT CAN BE MODIFIED AT RUNTIME	13
RUNNING THE APPLICATIONS	14
<i>Program shortcuts</i>	14
<i>Startup script</i>	14
CHECK FOR UPDATES	15
INSTALLING MAGICAD ON MULTIPLE WORKSTATIONS	16
MSI INSTALLATION PACKAGE - SILENT INSTALLATION	16
<i>Sample installation batch files</i>	18
EXE INSTALLATION PACKAGE	18
<i>Sample installation batch files for .exe package</i>	19
<i>Silent installation of patch package</i>	19
FREQUENTLY ASKED QUESTIONS	20
HOW CAN I GET BACK MISSING MAGICAD RIBBON TABS?	20
WAS THE PATCH INSTALLED SUCCESSFULLY? I CANNOT FIND IT IN <i>PROGRAMS AND FEATURES / APPS AND FEATURES (INSTALLED APPS IN WINDOWS 11)</i>	20
HOW CAN I UNINSTALL A PATCH?	20

GENERAL

SELECTING INSTALLATION PACKAGE

First, go to MagiCAD Download Portal:

<https://portal.magicad.com/Download/GetProductCategoryList?categoryId=1>

Download MagiCAD

Welcome to the MagiCAD download page. To download MagiCAD installation package, define Autodesk technology and operating system, select the MagiCAD version, download site, MagiCAD product and sign in to begin download.



The screenshot shows a web interface for selecting a MagiCAD installation package. It features several dropdown menus and a list of options:

- TECHNOLOGY**: Autodesk AutoCAD
- OPERATING SYSTEM**: Windows 64-bit
- MAGICAD VERSION**: 2024
- MAGICAD PRODUCT**: MagiCAD 2024 for AutoCAD 2021-2024 (MSI)
- DOWNLOAD LOCATION**: A dropdown menu with the following options:
 - MagiCAD 2024 for AutoCAD 2021-2024(EXE)
 - System Administrators ---
 - MagiCAD 2024 for AutoCAD 2021-2024 (MSI)
 - Riuska ---
 - Riuska 5.5.30 (part of MagiCAD Comfort & Energy)
- OTHER USEFUL TOOLS**:
 - [MagiCAD Comfort & Energy](#)
 - [Network License Server Utilities](#)
 - [Installation instructions](#)

Note: Before beginning the installation process, please familiarise yourself with the instructions on installation and license activation in this [Installation Guide](#).

In the MagiCAD Download Portal, the EXE and MSI installation packages are available in the **MAGICAD PRODUCT** section. With Update Releases, you also have the option to download the relevant installation package directly via MagiCAD's Check for Updates function.

Both of the installation packages install the full version of the MagiCAD Release, but there are differences in the installation procedure. Select the procedure which best suits your needs:

1. MagiCAD 2024 for AutoCAD 2021-2024 (EXE)

- For manual installation. This is the default installation option for users who have administrator rights.
- Can be installed silently via command line, but the only available parameters are language and install location. If you need more installation parameters, use the MSI package.

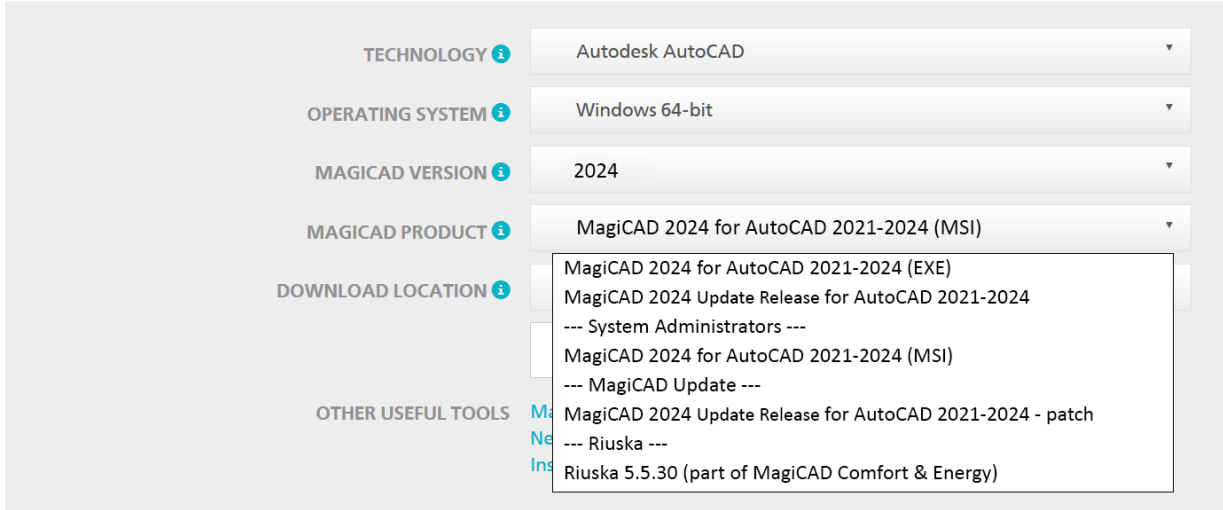
2. MagiCAD 2024 for AutoCAD 2021-2024 (MSI) (---System Administrators---)

- This is the default installation option for System Administrators.
- Use this package if you have to use command line parameters.
- Must be installed from Admin Command Prompt.

UPDATING EXISTING SOFTWARE

Download MagiCAD

Welcome to the MagiCAD download page. To download MagiCAD installation package, define Autodesk technology and operating system, select the MagiCAD version, download site, MagiCAD product and sign in to begin download.



The screenshot shows a web form with the following fields and options:

- TECHNOLOGY**: Autodesk AutoCAD
- OPERATING SYSTEM**: Windows 64-bit
- MAGICAD VERSION**: 2024
- MAGICAD PRODUCT**: MagiCAD 2024 for AutoCAD 2021-2024 (MSI)
- DOWNLOAD LOCATION**: A dropdown menu is open, showing the following options:
 - MagiCAD 2024 for AutoCAD 2021-2024 (EXE)
 - MagiCAD 2024 Update Release for AutoCAD 2021-2024
 - System Administrators ---
 - MagiCAD 2024 for AutoCAD 2021-2024 (MSI)
 - MagiCAD Update ---
 - MagiCAD 2024 Update Release for AutoCAD 2021-2024 - patch
 - Riuska ---
 - Riuska 5.5.30 (part of MagiCAD Comfort & Energy)
- OTHER USEFUL TOOLS**: Links for 'Ma', 'Ne', and 'Ins' are visible.

With Update Releases, when updating your existing installation, you have the option to download the relevant installation package directly via MagiCAD's Check for Updates function.

Note: Before beginning the installation process, please familiarise yourself with the instructions on installation and license activation in this [Installation Guide](#)

There are three different Update Release installers available in the **MAGICAD PRODUCT** section of the Download Portal:

1. **MagiCAD 2024 Update Release for AutoCAD 2021-2024**
 - If you do not have MagiCAD 2024 installed, select this package. If you have MagiCAD installed, you need to uninstall it before installing this package. The package installs both MagiCAD 2024 Release and Update Release Patch.
2. **MagiCAD 2024 Update Release for AutoCAD 2021-2024 - patch (---MagiCAD Update---)**
 - An existing MagiCAD 2024 installation must be found on the PC. If you have MagiCAD 2024 release already installed on the PC, use this installation package. The newest patch will always include the previous Update Releases. Activation codes are not needed for the Update Release patch installation.
3. **MagiCAD 2024 for AutoCAD 2021-2024 (MSI) (---System Administrators---)**
 - This MSI package does **NOT include the Update Release Patch**.
 - Upgrade to Update Release by installing **MagiCAD 2024 Update Release for AutoCAD - patch**
 - Use this package if you have to use command line parameters

BEFORE YOU INSTALL MAGICAD 2024

Platform requirements

This program version supports AutoCAD from version 2021 to version 2024 and the corresponding versions of Architecture (Architectural Desktop) and MEP (Building Systems).

NOTE: If you have an older MagiCAD version installed:

It is recommended to uninstall older MagiCAD version before installing the new version. It is, however, possible to upgrade an older version of MagiCAD to this version, if you do not change your AutoCAD version. If you intend to install the new version on another AutoCAD platform than the older version, you must first remove the old version of MagiCAD.

If you change both AutoCAD and MagiCAD versions and intend to uninstall your older AutoCAD version, uninstall MagiCAD before you uninstall AutoCAD.

Remember to back up all your important MagiCAD files before you uninstall your older MagiCAD versions or start installing MagiCAD.

Uninstall the old version(s) through the Control Panel (Add / Remove Programs).

If your previous version is 2015.4 or earlier, remove also the License Management Utility and Check for Updates, as the installation procedure has changed and the utilities no longer have separate Add/Remove Programs items.

Start and exit AutoCAD

To be able to create the necessary shortcuts and registry settings, the Setup needs to first determine which AutoCAD version MagiCAD will be installed on.

Before you start the MagiCAD Setup procedure, start and close the AutoCAD version on which you want to install MagiCAD. This way you can be sure that MagiCAD is installed on the right version of AutoCAD (AutoCAD saves the status of the most recent AutoCAD session in the registry, which the MagiCAD Setup procedure will then retrieve).

Alternatively, if you perform the MagiCAD Setup procedure on several workstations over the network, you may prefer to specify the AutoCAD version information in the installer properties. In this case, the MagiCAD Setup procedure will utilise the properties that you specify. For further information, see chapter "Installing MagiCAD on multiple workstations".

INSTALLING MAGICAD ON A SINGLE WORKSTATION

SETUP ARCHITECTURE

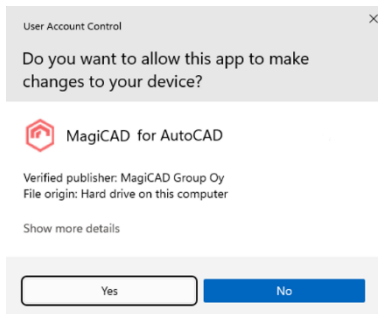
This chapter describes a typical procedure of MagiCAD installation on a single workstation. In larger corporate networks also silent installations may be performed; in that case, see chapter “Installing MagiCAD on multiple workstations” and contact the technical support if necessary.

Administrator privileges are required when running MagiCAD Setup.

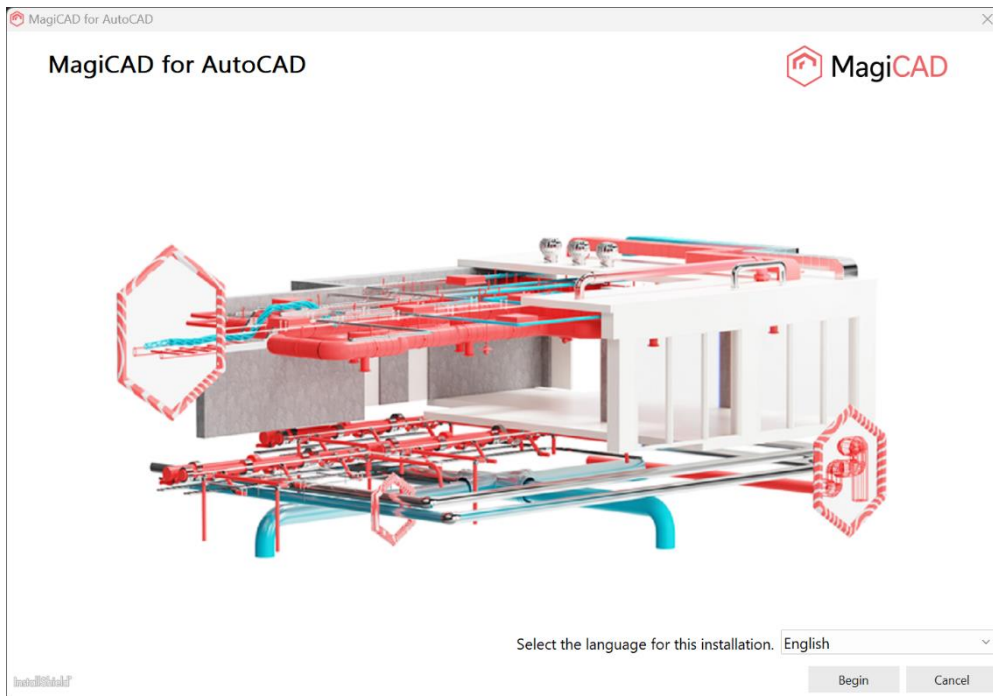
The installer for a single workstation consists of several application setups:

- MagiCAD for AutoCAD
- License Management Utility
- Check for Updates

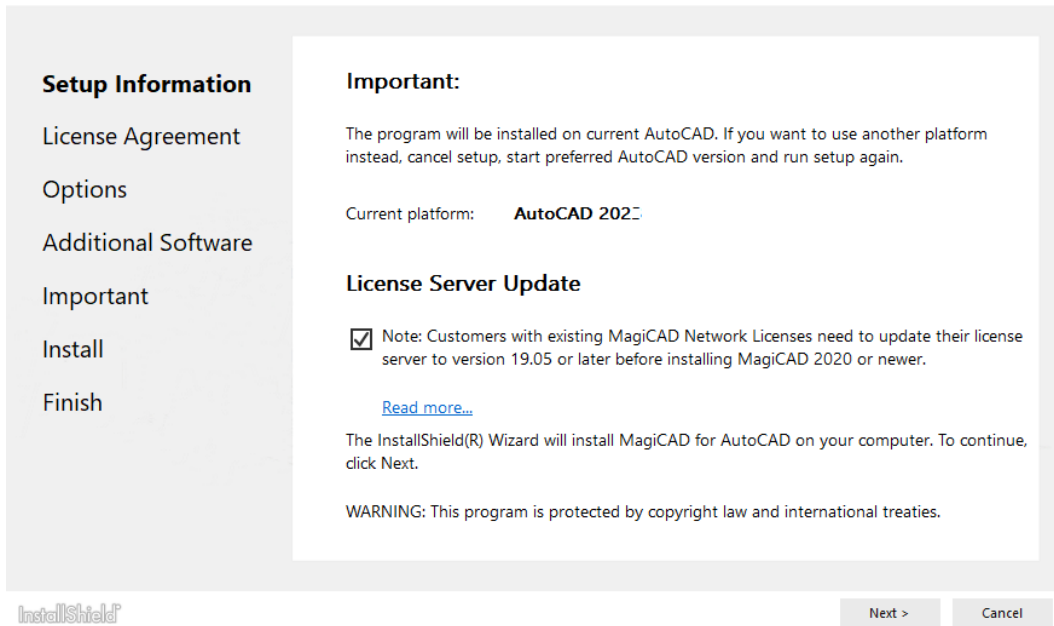
When you run the setup executable, the following dialogs are displayed:



If User Account Control is enabled, installation requires permission to continue. If this dialog appears, Click Yes.



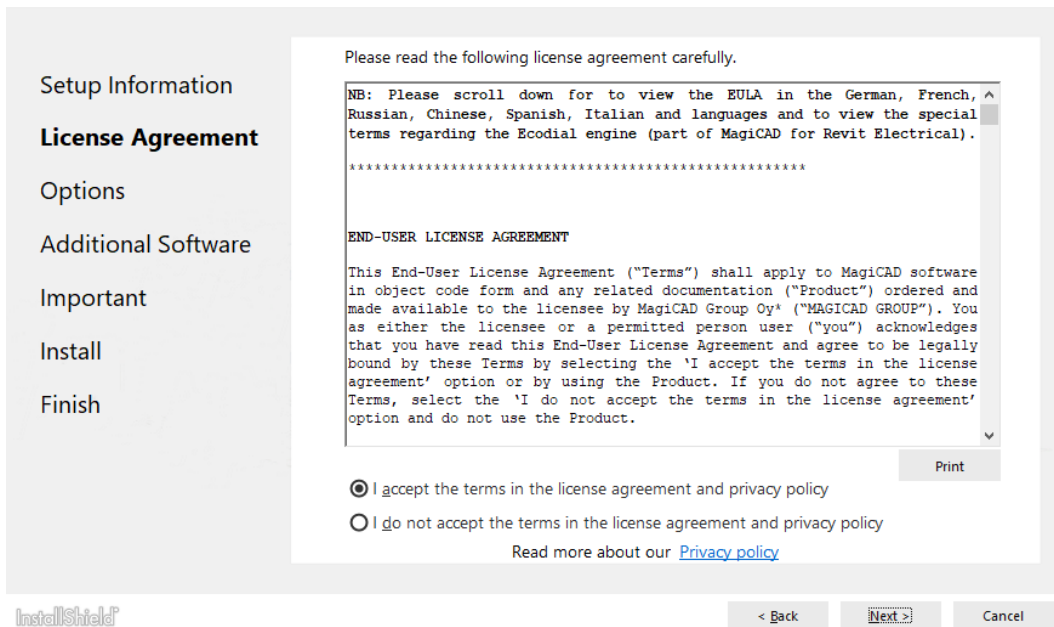
Select the installation language and click *Begin*.



In the start dialog you can see the name of the platform on which MagiCAD will be installed.

Customers with existing MagiCAD Network Licenses need to update their license server to version 19.05 or later before installing MagiCAD 2024. [Read More...](#)

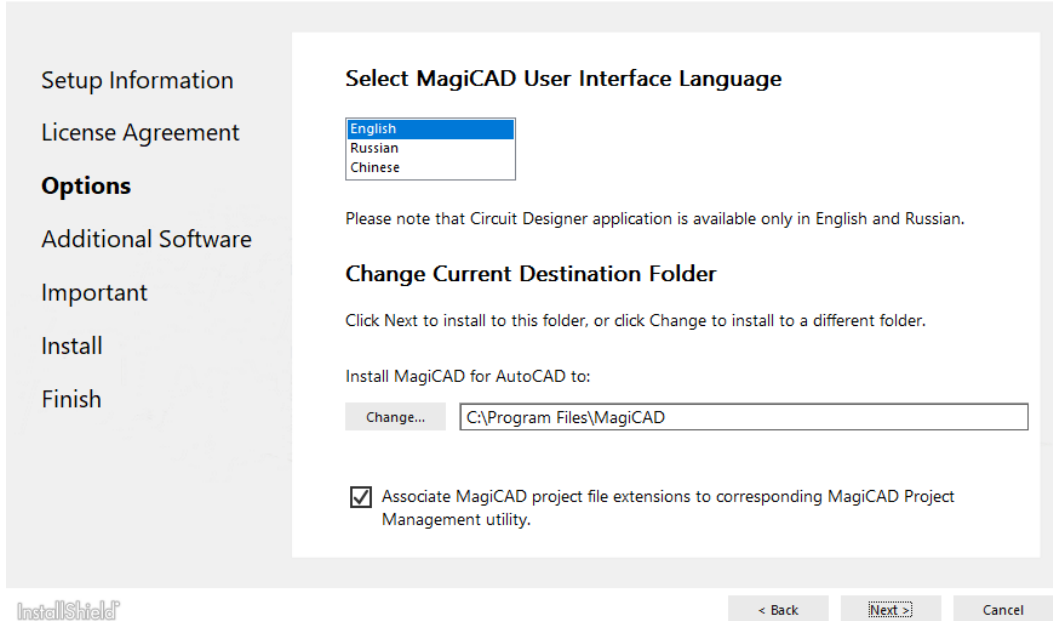
Check the note and click **Next** to continue.



You must read and accept the license agreement to proceed with the MagiCAD Setup procedure.

Next, select the **User Interface Language** for MagiCAD.

If you select Chinese as the user interface language, the program will load online product databases (product libraries) from a server that is located in China. You can, however, change this setting later in the user settings utility.

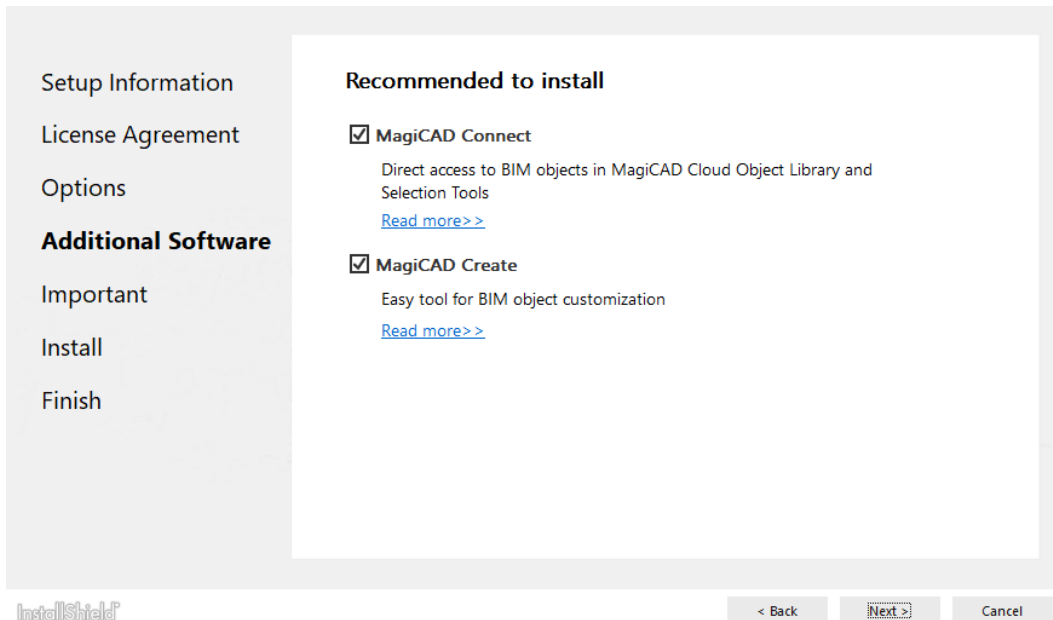


Select the **Destination Folder**. If you want to change the default folder, click *Change* and select a new Destination Folder. When the preferred Destination Folder has been defined, click *Next*.

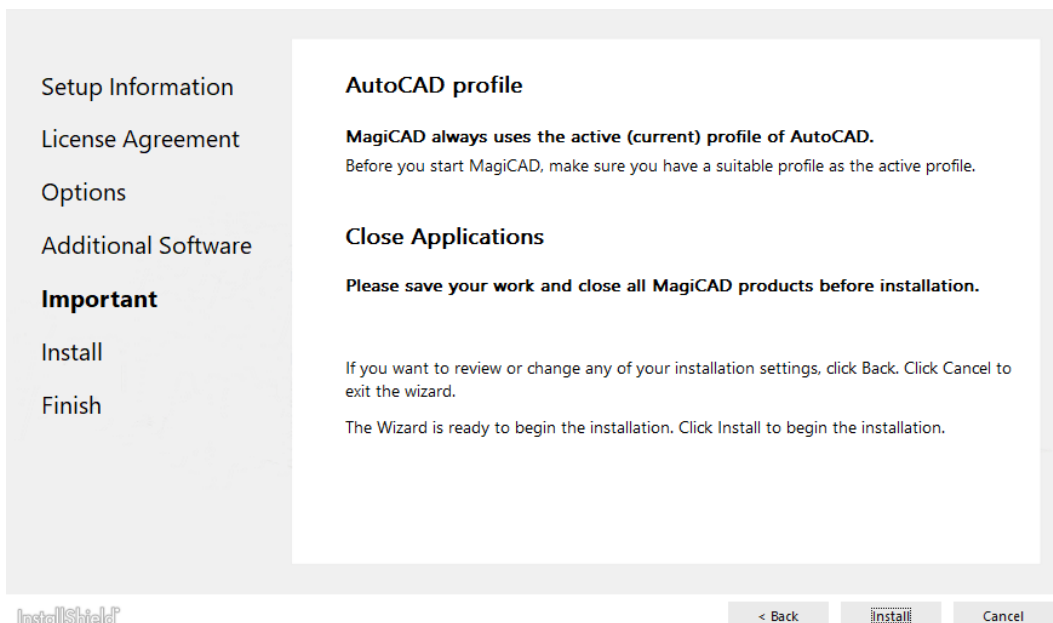
During MagiCAD installation it is now possible to install additional tools which will make design work easier. It is optional but recommended to install the following applications:

MagiCAD Connect enables you to access MagiCAD Cloud libraries and selection tools without leaving your MagiCAD project. You can insert BIM objects from MagiCAD Cloud directly into your project and use selection tools to select, configure and insert manufacturer products.

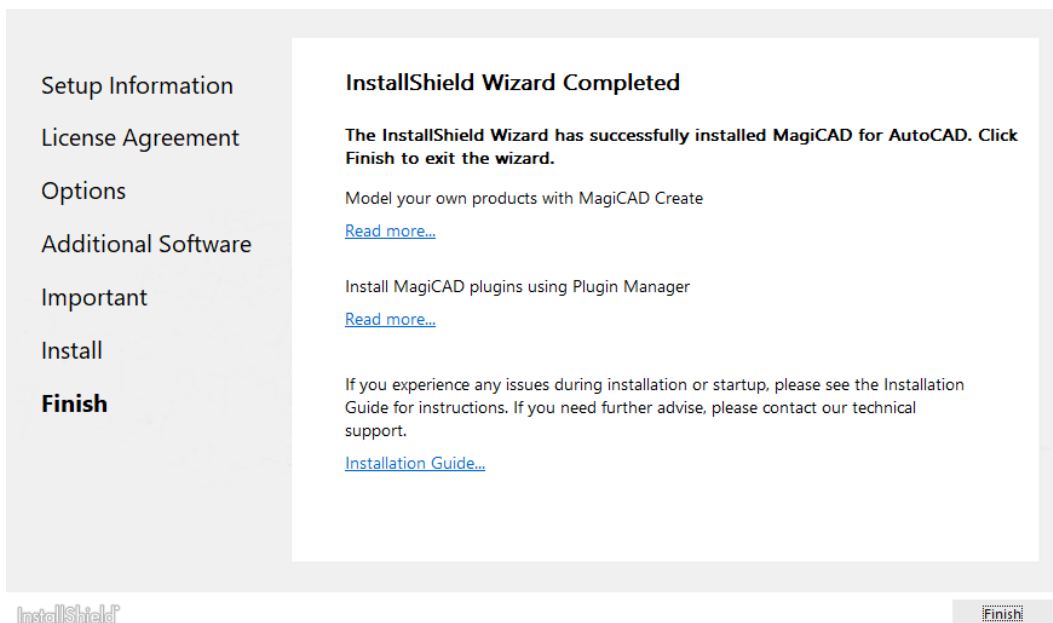
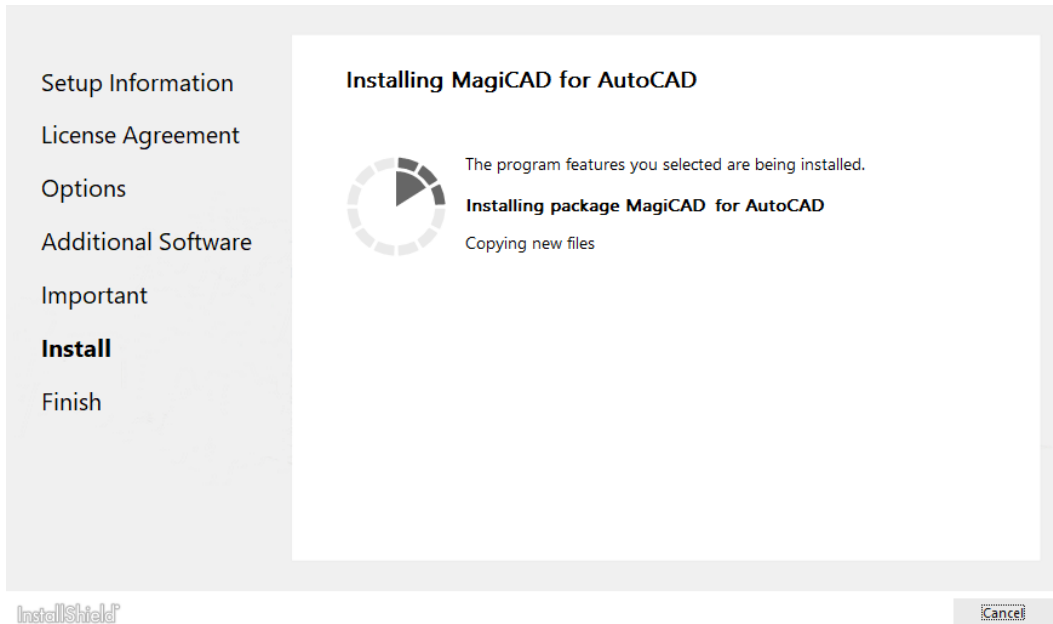
MagiCAD Create offers a fast and easy way to create custom MEP-specific BIM objects and libraries. Installing is easy, just check the tools you want to install and click *Next*.



The following dialog displays information regarding AutoCAD profiles.



It is important that you save your work and close AutoCAD before continuing. Click *Install* to continue. The MagiCAD Setup will then begin copying files and making the necessary settings.



Click *Finish* to complete the setup.

When the MagiCAD Setup procedure has been completed, **please check that the program license is available**. Follow the instructions for license usage and activation in the chapter "Licensing".

HOW TO CHECK THE INSTALLED MAGICAD RELEASE VERSION

The Comments column in Programs and Features displays the version, e.g. MagiCAD Release: 2024.

If the Comments column in Programs and Features is not visible, right-click the column title bar, select 'More...', select 'Comments' and click 'OK'.

LICENSING

MagiCAD can be used with two types of licenses:

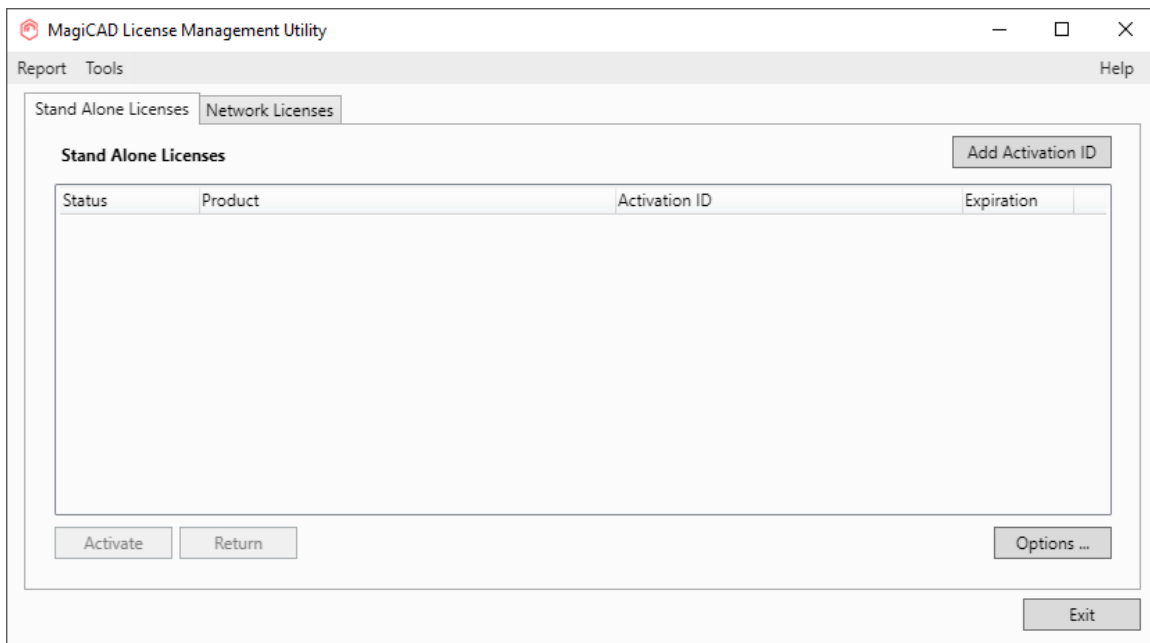
Stand-alone licenses, which are activated for a specific workstation. Internet connection is required when the licenses are activated. However, when the licenses have been activated, the program can be used also when disconnected from the network.

Network licenses, which are stored on a network server.

If your company's IT administrator has enabled license borrowing, you can borrow the application licenses to be used while disconnected from the network.

Setting up a network license server is described in a separate document.

Both license types are managed at the workstation using the license management utility. The shortcut link to the utility can be found in the **MagiCAD\ Tools** desktop folder.



If the version of the MagiCAD license currently activated on your workstation is 2015.11 SR-1 or older, you need to return the old license before you can activate the new license.

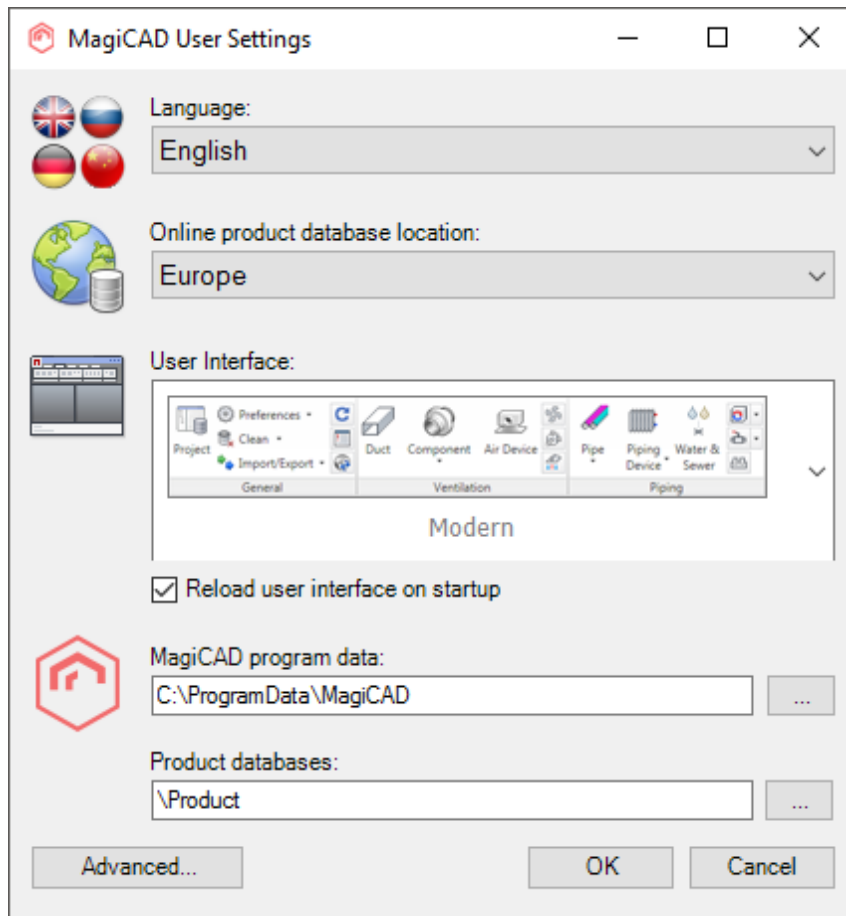
Select the product and click the *Return* button.

USER SETTINGS UTILITY

With this utility it is possible to change the user interface language and modify the path / template file settings for MagiCAD applications.

The available user interface languages are

- English, French, German and Russian for Circuit Designer
- English, French, German, Russian and Chinese for other applications



The User Settings utility can be accessed at any time after the installation using the shortcut link in the **MagiCAD\MagiCAD for AutoCAD – Utilities** desktop folder.

MagiCAD will automatically check whether the settings have been defined for the current MagiCAD version. If the User Settings utility has not been run yet, the User Settings utility will be opened automatically.

Note that if the end-user is different from the user who installed the program, the settings made during installation do not apply to the end-user. In this case, the end-user needs to run the utility separately.

See "Read Me First" document in the **MagiCAD\MagiCAD for AutoCAD – Documentation** desktop folder for more information about the User Settings utility.

PROGRAM DIRECTORY STRUCTURE OF MAGICAD

The program executables are mainly installed to the **Destination Folder** selected during the MagiCAD Setup procedure. All MagiCAD applications (*Heating & Piping and Ventilation, Electrical, Room, System Designer, Circuit Designer* and *Product Modeller*) are installed in the same directory.

The program directory includes also the following subdirectories:

Directory	Contents
Plugins	Third-party plugins for MagiCAD

License Management Utility is installed in

C:\Program Files\Common Files\MagiCAD Shared\License Management Utility

Check for Updates is installed in

C:\Program Files\Common Files\MagiCAD Shared\CheckforUpdates

LOCATION OF FILES THAT CAN BE MODIFIED AT RUNTIME

In Windows 10, Windows 8 and Windows 7 the location is the following:

C:\ProgramData\MagiCAD






Directory	Contents
Help	Help files
ReadMe	"Read me first" instructions
Support	Customisation files (menus and toolbars)
Product	Product databases
Demo Projects	Demo projects
2DSymbols	Symbol libraries of MagiCAD Electrical, MagiCAD Circuit Designer and MagiCAD System Designer
3DSymbols	3D symbol blocks (.dwg files) for MagiCAD Electrical
UserSymbols	Directory for the user symbol files which can be defined by the user.
Configurations	Configuration files, e.g., for the MagiCAD Export function
Templates	Project templates

RUNNING THE APPLICATIONS


Program shortcuts

The MagiCAD Setup procedure creates the application shortcuts into the **MagiCAD** folder on the desktop and under the **Start\Programs\MagiCAD** folder.






The following shortcuts are created by the MagiCAD Setup procedure:

-  MagiCAD for AutoCAD - Demo Projects
-  MagiCAD for AutoCAD - Documentation
-  MagiCAD for AutoCAD - Utilities
-  Tools
-  MagiCAD for AutoCAD

The **Tools** subfolder contains the following shortcut:

-  License Management Utility

The **MagiCAD for AutoCAD – Utilities** subfolder contains the User Settings utility and applications for maintaining MagiCAD projects without running MagiCAD.

-  Edit Electrical Project
-  Edit Room Project
-  Edit Schematics Dataset
-  Edit Ventilation and Piping Project
-  MagiCAD User Settings

Command (target) in the **MagiCAD for AutoCAD** shortcut has the following format:

```
"[PathofAutoCAD]\acad.exe" [AdditionalArguments] /p [Profile] /w  
[WorkspaceName] /b "[PathofMagiCAD]\[ScriptName]"
```

where

[PathofAutoCAD] is the full directory name of AutoCAD executable (acad.exe)

[AdditionalArguments] are the additional command line switches that you may wish to include in the startup (e.g. if you run MagiCAD on Architectural Desktop); see chapter "Installing MagiCAD on multiple workstations / Utilising MSI properties" for further information

[Profile] is the AutoCAD profile that is selected for the MagiCAD session (either a profile name or filename of an .arg file). "" means that MagiCAD uses the active (current) profile.

[WorkspaceName] is the AutoCAD workspace that is selected for the MagiCAD session

[PathofMagiCAD] is the directory where MagiCAD applications are installed

[ScriptName] is the filename of the startup script; which depends on the AutoCAD version

For example, the shortcut for MagiCAD might have its target defined as follows:

```
"C:\Program Files\AutoCAD 2024\acad.exe" /p "MagiCAD" /w "" /b  
"D:\MagiCAD\magicad_start_r24.scr"
```

In this example, Architectural Desktop is run as AutoCAD (i.e. no additional command line switches are applied), **MagiCAD** profile is used, current workspace is used, and the startup script is run from the program directory D:\MagiCAD.

Startup script

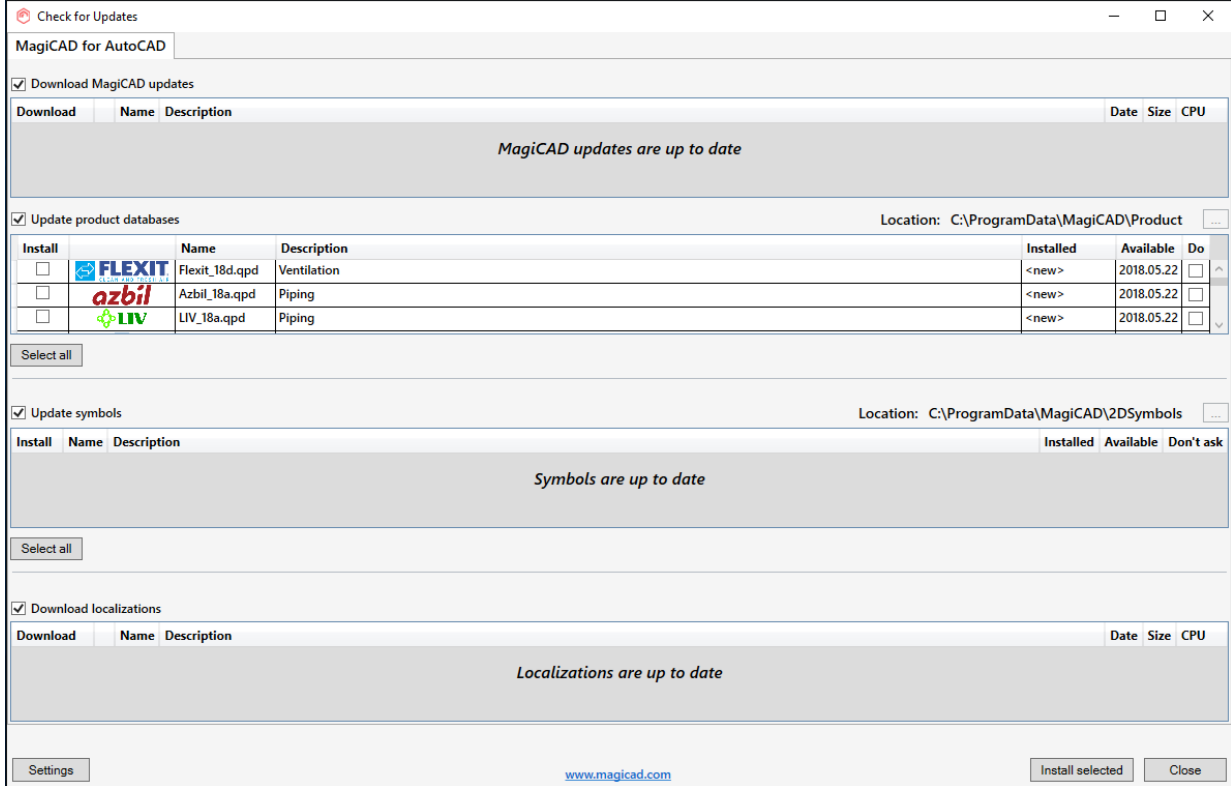
MagiCAD startup script is loaded when the application is started using the shortcut. By default, the script loads the applications (loader .arx file). You can customise the startup script according to your preferences.

All MagiCAD applications (Piping, Sprinkler, Ventilation, Electrical, System Designer, Circuit Designer, and Room) are loaded when you start the program. Please note, however, that you can run only the applications for which you have a valid license.

CHECK FOR UPDATES

You need an open internet connection to be able to use this function.

When you click the **Check for Updates** button in the MagiCAD ribbon, a utility displaying the available updates starts.






Check for Updates

MagiCAD for AutoCAD

Download MagiCAD updates

Download	Name	Description	Date	Size	CPU
<i>MagiCAD updates are up to date</i>					

Update product databases Location: C:\ProgramData\MagiCAD\Product

Install	Name	Description	Installed	Available	Do
<input type="checkbox"/>	 FLEXIT	Flexit_18d.qpd	Ventilation	<new>	2018.05.22
<input type="checkbox"/>	 azbil	Azbil_18a.qpd	Piping	<new>	2018.05.22
<input type="checkbox"/>	 LIV	LIV_18a.qpd	Piping	<new>	2018.05.22

Select all

Update symbols Location: C:\ProgramData\MagiCAD\2DSymbols

Install	Name	Description	Installed	Available	Don't ask
<i>Symbols are up to date</i>					

Select all

Download localizations

Download	Name	Description	Date	Size	CPU
<i>Localizations are up to date</i>					

Settings www.magicad.com Install selected Close

INSTALLING MAGICAD ON MULTIPLE WORKSTATIONS

MSI INSTALLATION PACKAGE - SILENT INSTALLATION

The MagiCAD Setup procedure is performed using Microsoft Installer technology. The installation can be customized with the help of certain properties, which reduces the amount of work when a large number of workstations are configured.

The properties can be manipulated, e.g., by employing scripts or transforms. Note that R24 refers to versions 2021, 2022, 2023 and 2024.

Property	Purpose	Default value
INSTALLDIR	The directory where the program will be installed.	C:\Program Files\MagiCAD Note: may vary depending on the language of the operating system
UI_LANGUAGE	User interface language of the program. 1512=English 1528=Russian 1539=Chinese If you select Chinese as the language, the online product databases will be read from the server in China by default. You can change this setting later if necessary.	1512
PROFILE_NAME	Name or filename of the profile to be used in the program shortcut of MagiCAD (/p switch)	"" (this means that AutoCAD uses the active, i.e. current, profile when MagiCAD is started)
INSTALL_R24	Install program on R24 platform (2021, 2022, 2023 or 2024) 0=no, 1=yes	1
ACAD_WORKSPACE_R24	Workspace to be used in the program shortcut of MagiCAD	
ACAD_R24_CMD_ARGS	Additional command line switches to the shortcut of MagiCAD applications	
ACAD_REG_R24_VER1	Internal version number of the Autodesk product For example, "R24.0" for AutoCAD 2021, "R24.1" for AutoCAD 2022, "R24.2" for AutoCAD 2023, "R24.3" for AutoCAD 2024	Note: if this property is not defined, the setup procedure will check the value from the HKEY_CURRENT_USER registry according to the AutoCAD version that was last run

ACAD_REG_R24_VER2	<p>Internal product/localisation number of the Autodesk product.</p> <p>For example,</p> <p>"ACAD-4101:409" for English AutoCAD 2021</p> <p>"ACAD-5101:409" for English AutoCAD 2022</p> <p>"ACAD-6101:409" for English AutoCAD 2023</p> <p>"ACAD-7101:409" for English AutoCAD 2024</p>	Note: if this property is not defined, the setup procedure will check the value from the HKEY_CURRENT_USER registry according to the AutoCAD version that was last run
DIR_2DSYMBOLS	Path setting for 2D symbols	Note: if this property is not defined, default value will be used (see the path definition in <i>MagiCAD Installation Guide</i>)
DIR_3DSYMBOLS	Path setting for 3D symbols (blocks), Electrical	Note: if this property is not defined, default value will be used (see the path definition in <i>MagiCAD Installation Guide</i>)
DIR_USERSYMBOLS	Path setting for the user-defined symbols, Electrical	Note: if this property is not defined, default value will be used (see the path definition in <i>MagiCAD Installation Guide</i>)
DIR_PRODUCT	Path setting for the manufacturer databases	Note: if this property is not defined, default value will be used (see the path definition in <i>MagiCAD Installation Guide</i>)
DIR_DEFAULTPROJ	Default path for project templates	Note: if this property is not defined, default value will be used (see the path definition in <i>MagiCAD Installation Guide</i>)
DIR_PROPERTY_SET_CFG	Default path for the property set configurations of export functions	Note: if this property is not defined, default value will be used (see the path definition in <i>MagiCAD Installation Guide</i>)
EXPORT_CONFIGURATIONS	Default configuration file for MagiCAD Export	Note: if the property is not defined, default value will be used (MagiCAD_Export.ini in the Configurations subdirectory; see the path definition in <i>MagiCAD Installation Guide</i>)
LICENSE_SERVER	Server(s) containing network licenses defined in port@host format. Multiple servers are separated with a semicolon.	
INSTALL_CFU	<p>Install Check for Updates</p> <p>0=no, 1=yes</p>	1

INSTALL_LMU	Install License Management Utility 0=no, 1=yes	1
INSTALL_PM	Install Plugin Manager 0=no, 1=yes	1
ASSOCIATE_FILES	Associate MagiCAD project file extensions to corresponding MagiCAD Project Management utility. 0=no, 1=yes	0

Sample installation batch files

When installing MagiCAD with MSI package, place all .MST files in the same folder as the .MSI installation package.

This sample script installs the 64-bit version of MagiCAD on the platform AutoCAD 2024:

```
msiexec /i "MagiCAD 2024 for AutoCAD 2021-2024.msi" /qn INSTALL_R24=1
ACAD_REG_R24_VER1="R24.3" ACAD_REG_R24_VER2="ACAD-7101:409"
```

This sample script installs the 64-bit version of MagiCAD on the platform AutoCAD 2021. The user interface language is Chinese. The program uses network licenses that are located on *server1* (no port number specified):

```
msiexec /i "MagiCAD 2024 for AutoCAD 2021-2024.msi" /qn INSTALL_R24=1
ACAD_REG_R24_VER1="R24.0" ACAD_REG_R24_VER2="ACAD-4101:409" UI_LANGUAGE=1539
LICENSE_SERVER="@server1"
```

MagiCAD Automatic Design Service Application setup package is delivered together with the MagiCAD installer. Install package with MagiCAD, it is **required** for Auto-Routing Underfloor Heating function to work.

```
msiexec /i "MagiCADAutomaticDesignServiceApplication.msi" /qn
```

Setup packages for additional tools are delivered together with the MagiCAD installer. It is optional, but recommended to install the following applications: MagiCAD Connect, MagiCAD Create

```
msiexec /i "MagiCAD Connect for AutoCAD 2024.msi" /qn
msiexec /i "MagiCAD Create.msi" /qn
```

EXE INSTALLATION PACKAGE

The properties for installing MagiCAD 2024 for AutoCAD.exe using command line are limited to UI language and installation location.

Property	Purpose	Default value
InstallFolder	The directory where the program will be installed.	C:\Program Files\MagiCAD Note: may vary depending on the language of the operating system

Language	User interface language of the program.	1512
If you select Chinese as the language, the online product databases will be read from the server in China by default. You can change this setting later if necessary.	1512=English 1528=Russian 1539=Chinese	

AssociateFiles	Associate MagiCAD project file extensions to corresponding MagiCAD Project Management utility.	0
	0=no, 1=yes	

Sample installation batch files for .exe package

Silent installation to default location with English UI language:

```
"MagiCAD 2024 for AutoCAD 2021-2024.exe" /silent
```

Silent installation, Russian UI language, custom location, file association added:

```
"MagiCAD 2024 for AutoCAD 2021-2024.exe" /silent /Language=1528  
/InstallFolder="C:\Program Files\MagiCAD_ru" /AssociateFiles=1
```

Silent installation of patch package

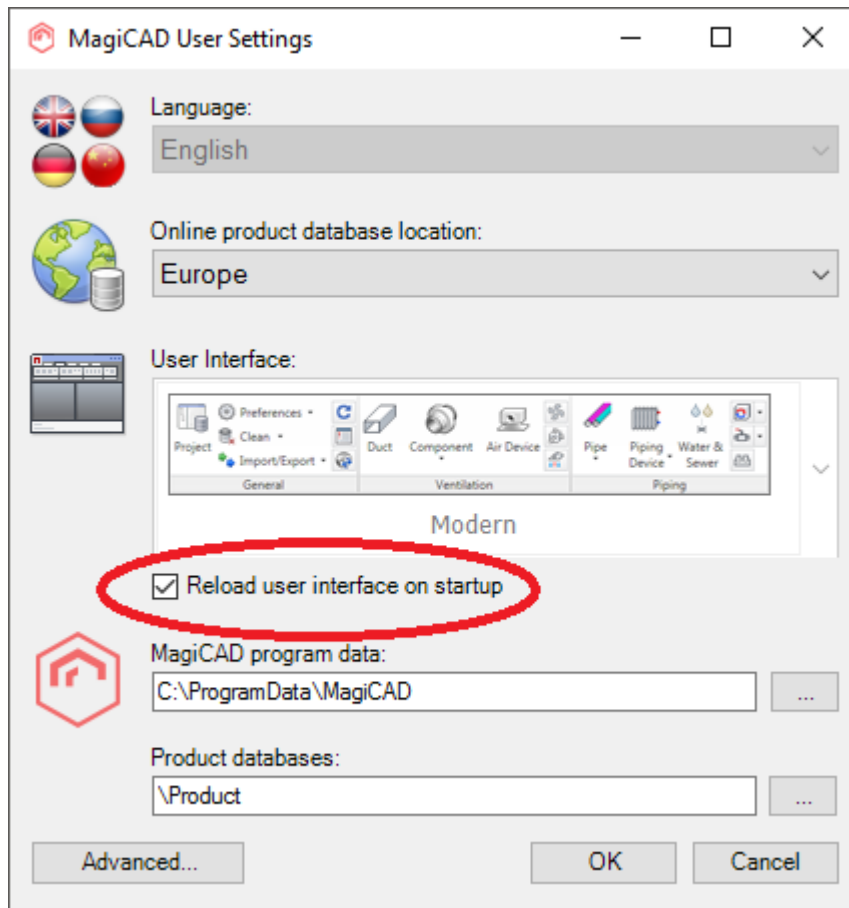
There are no parameters for patch packages, but you can install them silently:

```
"MagiCAD 2024 for AutoCAD 2021-2024 - patch.exe" /silent
```

FREQUENTLY ASKED QUESTIONS

HOW CAN I GET BACK MISSING MAGICAD RIBBON TABS?

- Close MagiCAD
- Start MagiCAD User Settings (Desktop | MagiCAD | MagiCAD for AutoCAD - Utilities | User Settings)
- Check “Reload user interface on startup”
- Click OK and start MagiCAD again.



WAS THE PATCH INSTALLED SUCCESSFULLY? I CANNOT FIND IT IN **PROGRAMS AND FEATURES** / **APPS AND FEATURES (INSTALLED APPS IN WINDOWS 11)**.

After patch installation, the MagiCAD name in *Programs and Features* remains the same, but the Version Number is updated. MagiCAD 2024 Main Release version number begins with 24.0, UR-1 with 24.1 and UR-2 with 24.2.

HOW CAN I UNINSTALL A PATCH?

You cannot uninstall only the patch installation. Uninstalling MagiCAD from Programs and Features will uninstall MagiCAD entirely.