



FläktGroup MagiCAD for AutoCAD Plugin

User guide

26/05/2023

Content

| | |
|---|-----------|
| ABOUT THIS DOCUMENT | 3 |
| INSTALLING THE SOFTWARE | 4 |
| Required MagiCAD version | 4 |
| Installation..... | 4 |
| STARTING THE PROGRAM | 5 |
| INSERTING COOLING BEAM | 7 |
| INSERTING AIR TERMINAL DEVICE..... | 10 |
| UPDATING SELECT PRODUCT..... | 10 |
| INSERTING AIR HANDLING UNIT | 11 |
| VIEW UNIT DATA | 15 |

About this document

The purpose of the FläktGroup MagiCAD Plugin is to use Select or Acon directly from MagiCAD as a product configurator, when adding FläktGroup products into MagiCAD for AutoCAD project / drawing.

FläktGroup MagiCAD Plugin is an AutoCAD ARX application which calls FläktGroup selection software (Select/Acon) with input parameters to calculate device, transfer device geometry, technical data and calculation results from Select/Acon into MagiCAD and installs the transferred device into MagiCAD drawing.

Note! This plugin replaces existing Select MagiCAD plugin.

Installing the software

Required MagiCAD version

FläktGroup MagiCAD Plugin works with the following MagiCAD versions

- MagiCAD 2023 and AutoCAD 2019-2023
- MagiCAD 2024 and AutoCAD 2021-2024

Installation

1. Ensure that you have required MagiCAD and AutoCAD versions installed on your computer
2. Install FläktGroup MagiCAD Plugin

Plugin (64-bit) can be downloaded from

<https://portal.magicad.com/download/ProductSearch?searchStr=Fläkt&categoryId=3>

Run the FläktGroup MagiCAD plug-in installer on your workstation

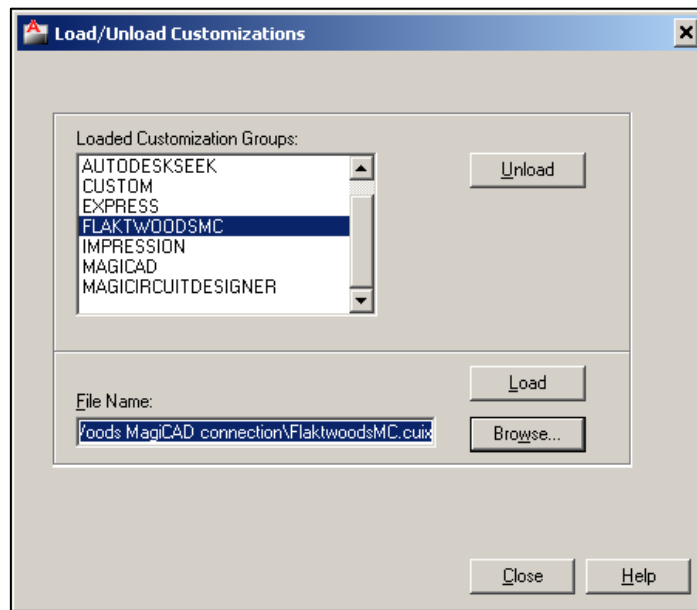
Administrator privileges are recommended for installation.

Note if you have several AutoCAD versions on your workstation: Before you run the installation program, start MagiCAD to make sure that FläktGroup MagiCAD Plugin installs on the same AutoCAD platform as MagiCAD.

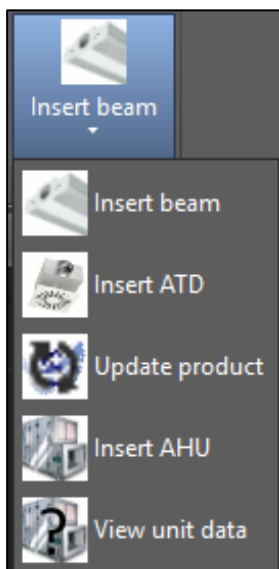
Starting the program

Before you start using *FläktGroup MagiCAD Plugin*, start MagiCAD and open or create a new Ventilation & Piping project.

In case where toolbar or ribbon panel button is not visible in AutoCAD after installation run **CULOAD** or **MENULOAD** in AutoCAD, and browse the customization file from the directory where you installed the program (by default, the directory is *C:\Program Files\FlaktGroup\FlaktGroup MagiCAD plugin*).



When you select Load, FläktGroup toolbar and ribbon panel button appears on the AutoCAD.



Information for the network administrators:

Plugin requires connection to FlåktGroup web site. EO.WebBrowser for .NET is used to browse to the web page.

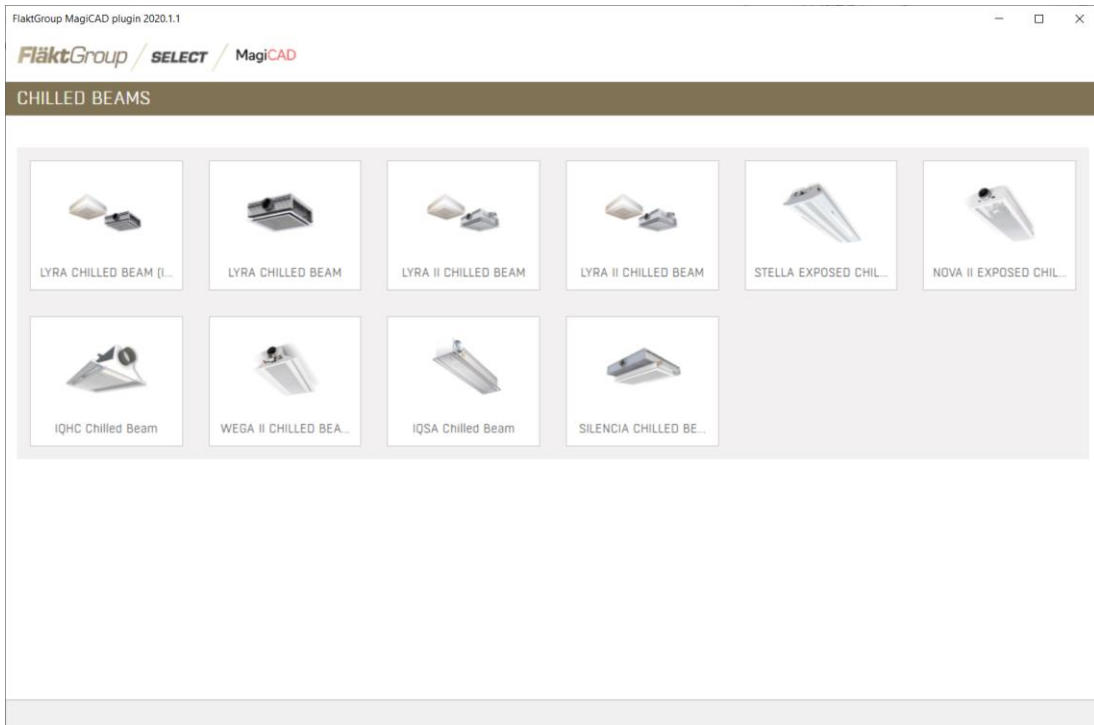
Standard HTTP GET (TCP, default port 80 should be used) method is used to retrieve files from the server. GET response includes file (mime application/octet-stream). Your network firewall should allow such connections.

Inserting cooling beam

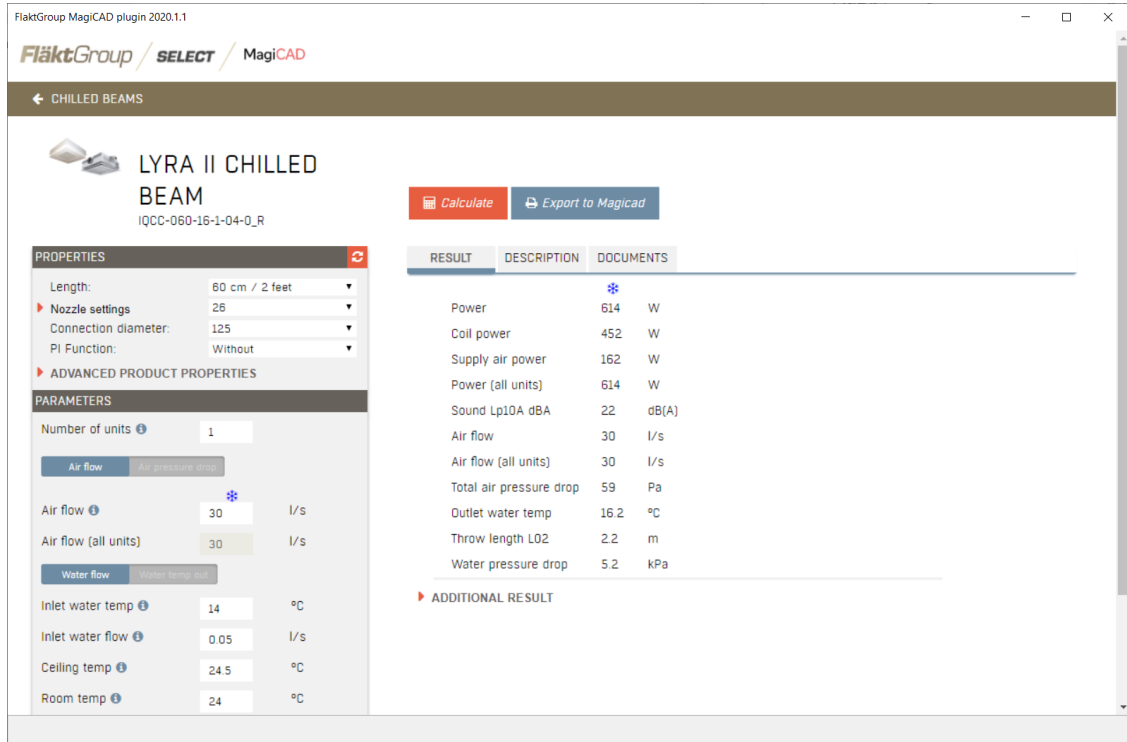
1.



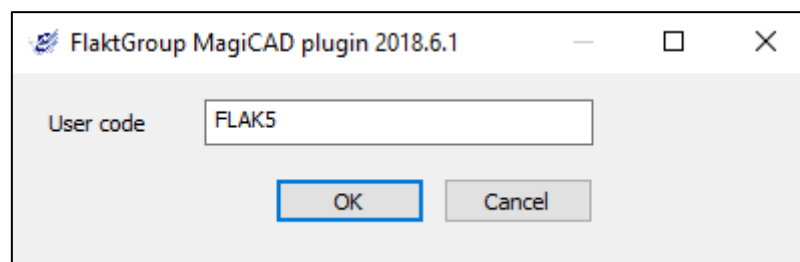
Select Insert beam button to start Select program. After Select has started, the right chilled beam can be selected from the page.



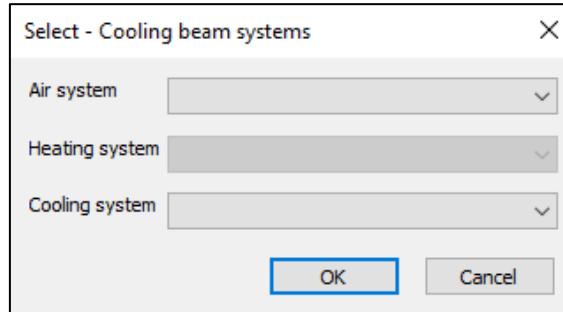
- The appropriate product variant should be configured on Select Calculation –page.



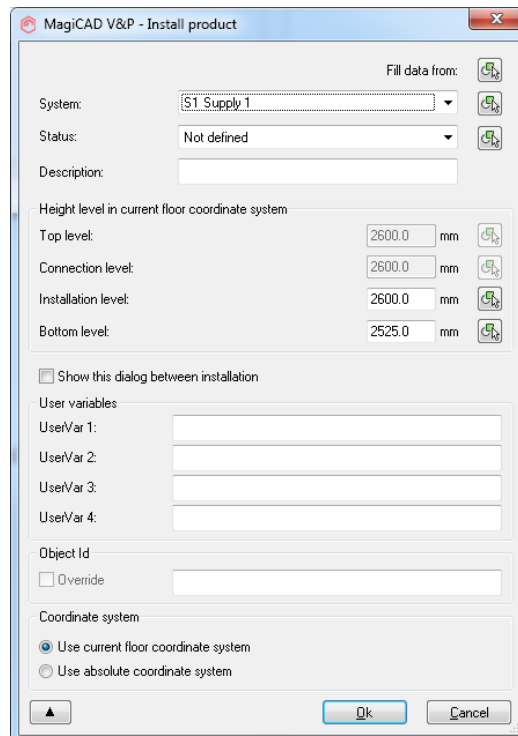
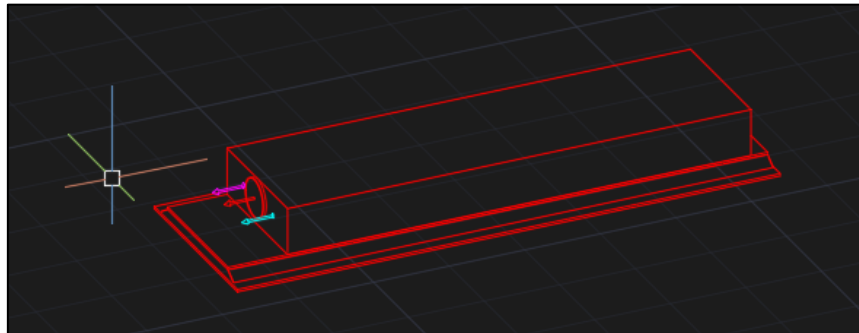
- Export to MagiCAD -button is enabled if product is possible to transfer to MagiCAD.
- Before product is inserted to MagiCAD drawing/project, user is asked to give user code for the product.



- After this user needs to select the right systems for the product.



- Product is now exported to MagiCAD and user can continue working with MagiCAD. e.g connect it to duct system and view product properties.



Inserting air terminal device



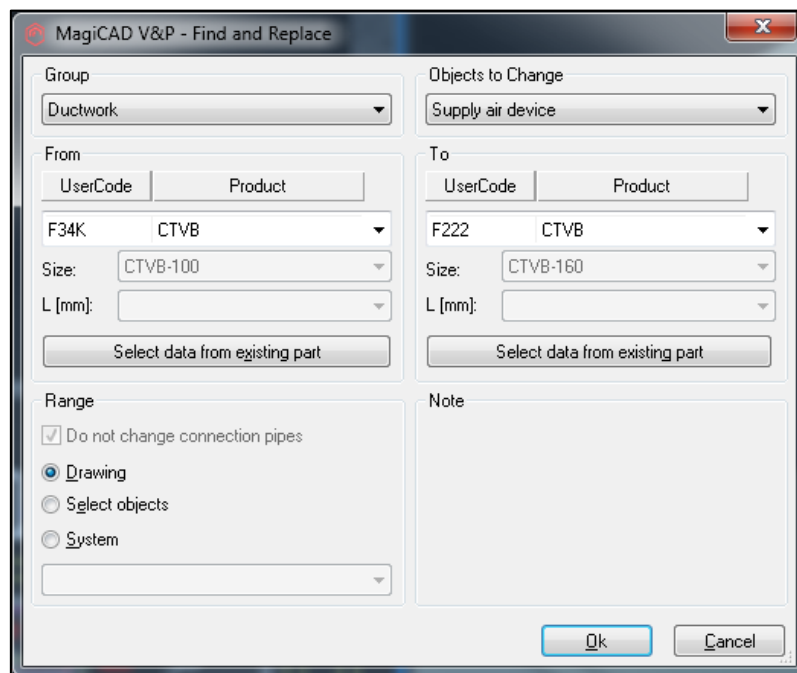
Inserting air terminal device works similar to inserting beam.

Besides exported product variant, also other variants from the same product are exported so user can easily change e.g. size without exporting a new product.

Updating Select product




1. Select Insert beam button to start updating product exported from Select to another product in Select.
2. Select product exported from Select.
3. Select starts.
4. Select new product which should replace selected product in MagiCAD.
5. Press Export to MagiCAD.
6. MagiCAD Find and Replace –dialog opens up.

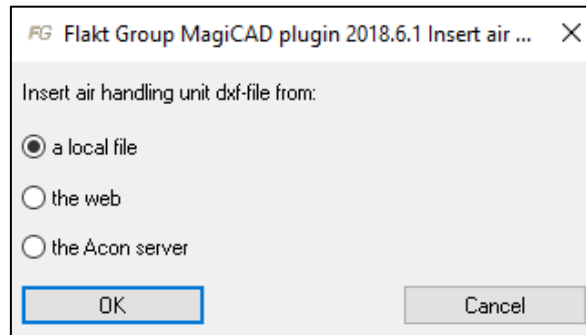


Select *Range* you want to make the update in.

7. By pressing Ok, requested product update will be done in the drawing.

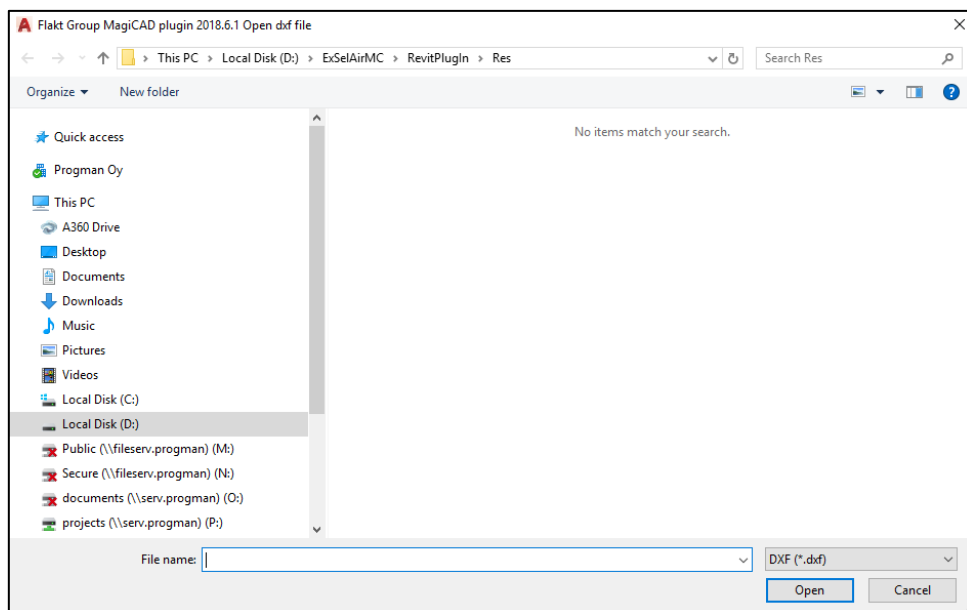
Inserting air handling unit

- 
 Select button to start inserting FläktGroup air handling unit which is created in FläktGroup configurator (Acon) to MagiCAD. The following dialog opens up.

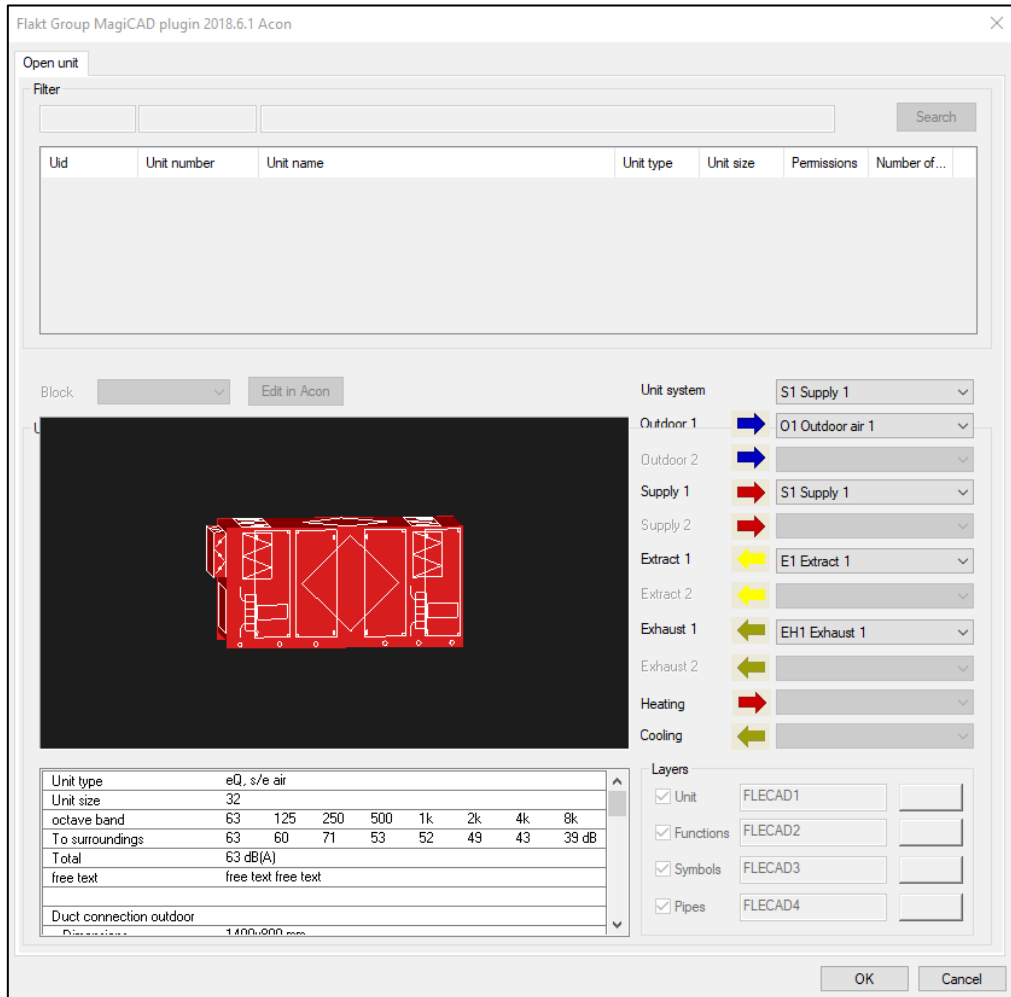


- Insert air handling unit DXF file from a local file

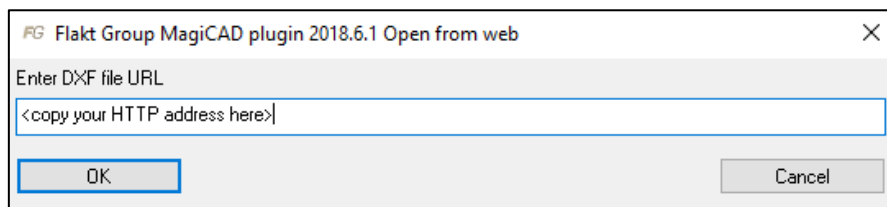
Open DXF file which you have exported from FläktGroup configurator (Acon) selection program.



Before unit is added to MagiCAD, you can see unit information, select unit system and select air system for the duct (if there is more than one)



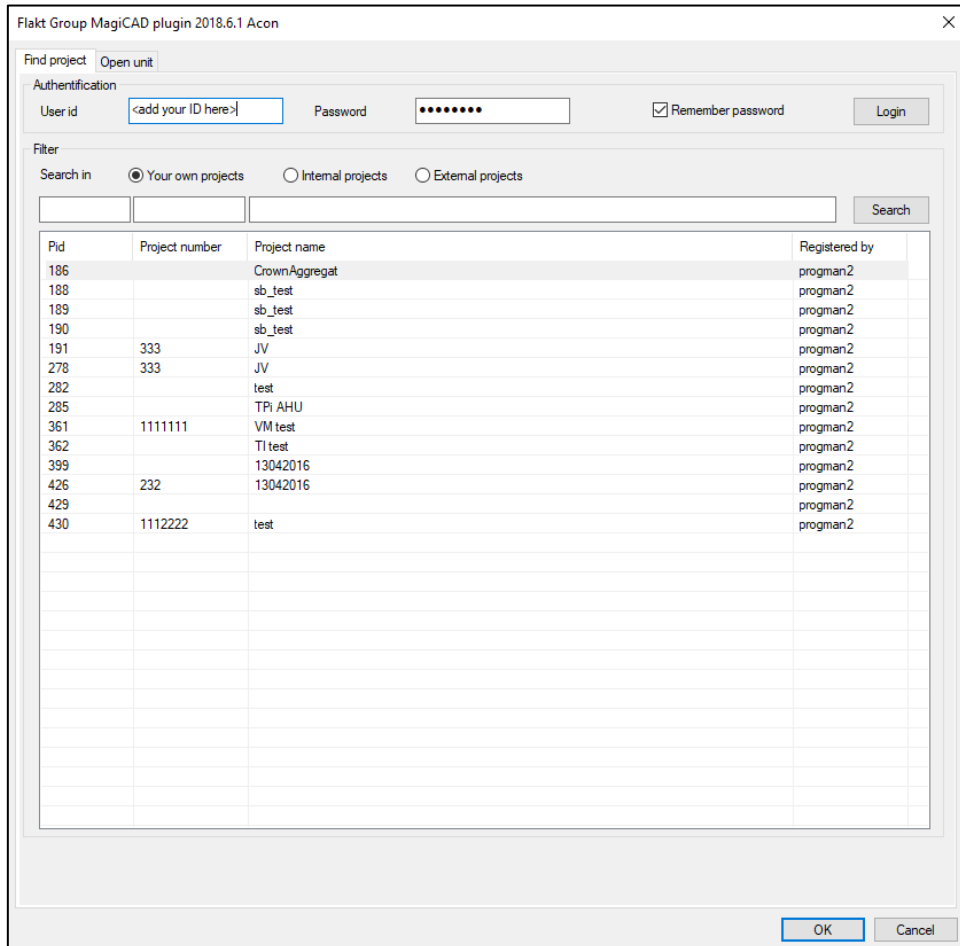
- Inset air handling unit DXF file from the web.
Give link address to field



4. Inset air handling unit DXF file from the Acon server:

Give your user id and password (same than in FläktGroup configurator (Acon)) and log in.

You will see your project(s) in list. Select one project and move to “Open unit”-page



| Pid | Project number | Project name | Registered by |
|-----|----------------|---------------|---------------|
| 186 | | CrownAggregat | progman2 |
| 188 | | sb_test | progman2 |
| 189 | | sb_test | progman2 |
| 190 | | sb_test | progman2 |
| 191 | 333 | JV | progman2 |
| 278 | 333 | JV | progman2 |
| 282 | | test | progman2 |
| 285 | | TPi AHU | progman2 |
| 361 | 1111111 | VM test | progman2 |
| 362 | | Tl test | progman2 |
| 399 | | 13042016 | progman2 |
| 426 | 232 | 13042016 | progman2 |
| 429 | | | progman2 |
| 430 | 1112222 | test | progman2 |

Select unit. If there are duct components for the unit, you can choose those in block combo. The unit and air side systems have default values, change those if needed.

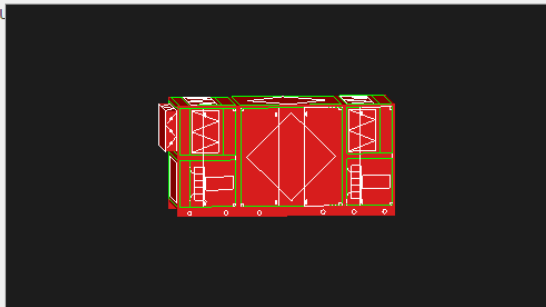
Flakt Group MagiCAD plugin 2018.6.1 Acon

Find project Open unit

Filter

| UId | Unit number | Unit name | Unit type | Unit size | Permissions | Number of... |
|-----|-------------|------------------|-----------|-----------|-------------|--------------|
| 81 | | | | 032 | | 6 |
| 158 | | EQ2 test | | 008 | | 1 |
| 199 | | | | 041 | | 2 |
| 258 | | | | 032 | | 1 |
| 292 | | wefr | | 068 | | 1 |
| 294 | | | | 068 | | 1 |
| 298 | | Test THomas EQTL | | 050 | | 1 |
| 321 | | | | 041 | | 1 |

Block 1 Edit in Acon



Unit system S1 Supply 1

- Outdoor 1 O1 Outdoor air 1
- Outdoor 2
- Supply 1 S1 Supply 1
- Supply 2
- Extract 1 E1 Extract 1
- Extract 2
- Exhaust 1 EH1 Exhaust 1
- Exhaust 2
- Heating
- Cooling

| Unit type | eQ, s/e air | | | | | | | |
|-------------------------|---------------------|-----|-----|-----|----|----|----|-------|
| Unit size | 32 | | | | | | | |
| octave band | 63 | 125 | 250 | 500 | 1k | 2k | 4k | 8k |
| To surroundings | 63 | 60 | 71 | 53 | 52 | 49 | 43 | 39 dB |
| Total | 63 dB(A) | | | | | | | |
| free text | free text free text | | | | | | | |
| Duct connection outdoor | 1400/600 mm | | | | | | | |

Layers

- Unit FLECAD1
- Functions FLECAD2
- Symbols FLECAD3
- Pipes FLECAD4

OK Cancel

View unit data



Select button to view unit data of the AHU.

Flakt Group MagiCAD plugin 2018.6.1 Acon

Open unit

Filter

| Uid | Unit number | Unit name | Unit type | Unit size | Permissions | Number of... |
|-----|-------------|-----------|-----------|-----------|-------------|--------------|
| | | | | | | |

Block: 1 Edit in Acon

Unit system: S1 Supply 1

- Outdoor 1: O1 Outdoor air 1
- Outdoor 2:
- Supply 1: S1 Supply 1
- Supply 2:
- Extract 1: E1 Extract 1
- Extract 2:
- Exhaust 1: EH1 Exhaust 1
- Exhaust 2:
- Heating:
- Cooling:

Layers

- Unit: FLECAD1
- Functions: FLECAD2
- Symbols: FLECAD3
- Pipes: FLECAD4

| | | | | | | | | |
|-------------------------|---------------------|-----|-----|-----|----|----|----|-------|
| Unit type | eQ, s/e air | | | | | | | |
| Unit size | 32 | | | | | | | |
| octave band | 63 | 125 | 250 | 500 | 1k | 2k | 4k | 8k |
| To surroundings | 63 | 60 | 71 | 53 | 52 | 49 | 43 | 39 dB |
| Total | 63 dB(A) | | | | | | | |
| free text | free text free text | | | | | | | |
| | | | | | | | | |
| Duct connection outdoor | 1400x900 mm | | | | | | | |

OK Cancel