



FläktGroup Revit Plugin

User guide

26/05/2023

Content

ABOUT THIS DOCUMENT	3
INSTALLING THE SOFTWARE	3
Required Revit / MagiCAD version.....	3
Installation.....	3
STARTING THE PROGRAM	4
INSERTING FLÄKTGROUP PRODUCTS FROM EXSELAIR	4
INSERTING FLÄKTGROUP PRODUCTS FROM ACON	10

About this document

The purpose of FläktGroup Revit plugin is to use SELECT or Acon directly from MagiCAD for Revit or Revit as a product configurator when adding FläktGroup products into project.

FläktGroup Revit Plugin calls FläktGroup selection software (SELECT/Acon) with input parameters to calculate the device, transfer device geometry, technical data and calculation results from SELECT/Acon into Revit.

Installing the software

Required Revit / MagiCAD version

Revit

- Revit 2021 - 2024

MagiCAD (optional)

- MagiCAD for Revit 2023 with Revit 2021 - 2023
- MagiCAD for Revit 2024 with Revit 2021 - 2024

Installation

1. Ensure that you have required Revit version installed on your computer
2. Install FläktGroup Revit plugin. Installation package can be downloaded from

<https://portal.magicad.com/download/ProductSearch?searchStr=Fläkt&categoryId=3>

The 64-bit version of the program is installed by running the installation program.
Administrator privileges are recommended for installation.

Information for network administrators:

Plugin requires connection to FläktGroup web site. EO.WebBrowser for .NET is used to browse to the web page. Standard HTTP GET (TCP, default port 80 should be used) method is used to retrieve files from the server. GET response includes file (mime application/octet-stream). Your network firewall should allow such connections.

Starting the program

After running the installation, FläktGroup panel appears in Revit Add-Ins ribbon tab and user can select which type of product to export.

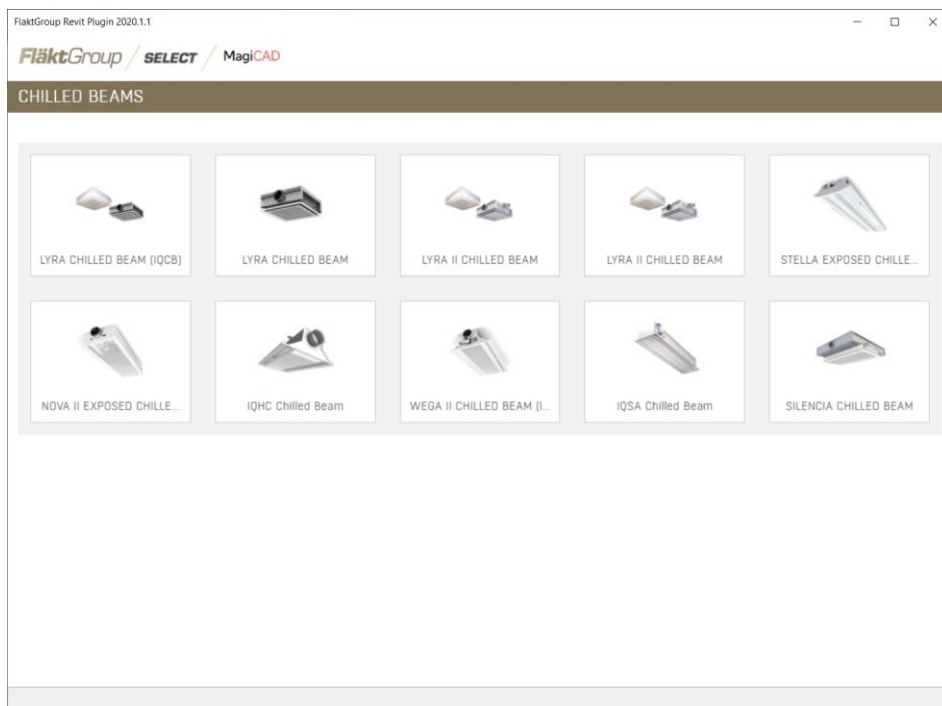


Inserting FläktGroup products from ExSelAir

In order to add FläktGroup beam, click Revit Add-Ins ribbon tab and Chilled beam button in FläktGroup panel and SELECT program will open



1. After SELECT has started, the right chilled beam can be selected from the page.

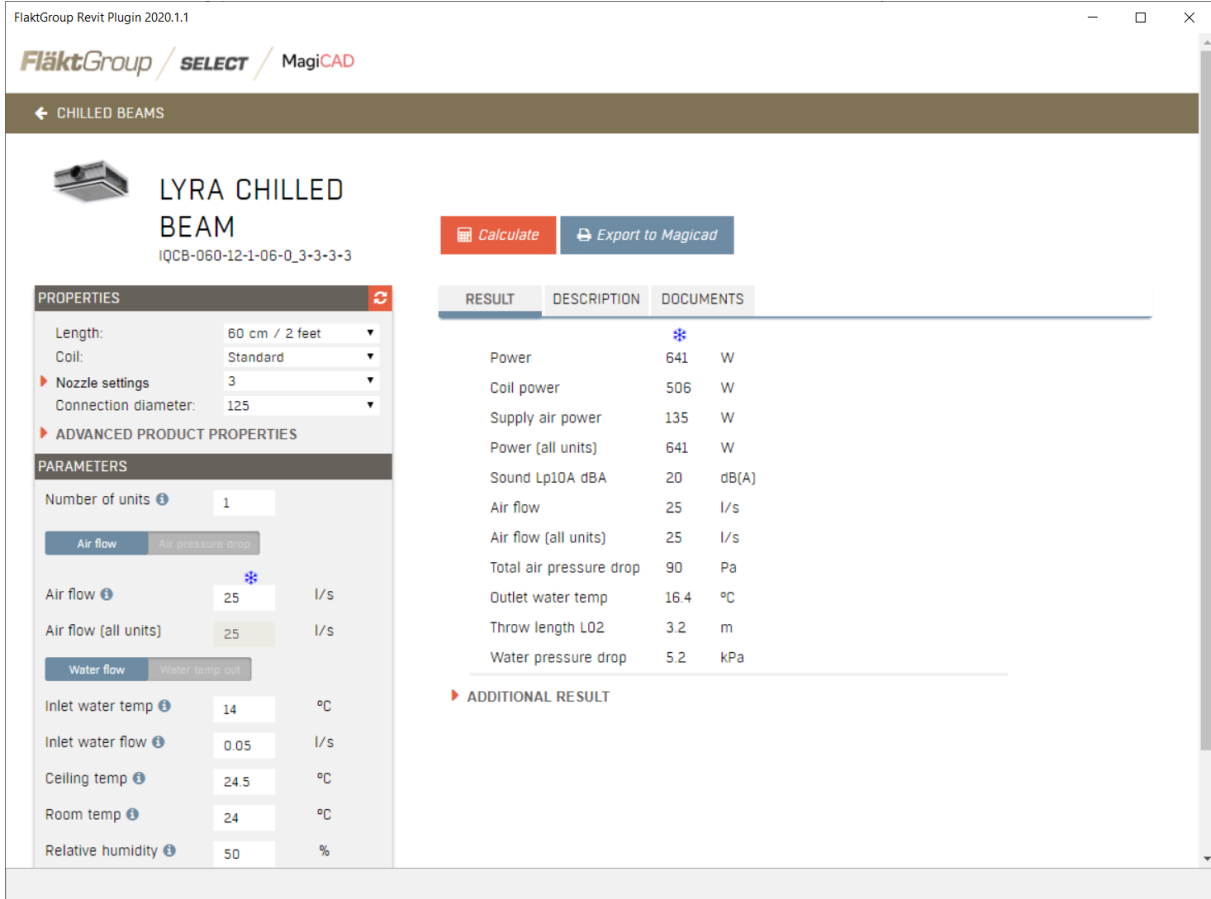


2. The appropriate product variant should be configured on SELECT Calculation page.

FlaktGroup Revit Plugin 2020.1.1

FlaktGroup / SELECT / MagiCAD

← CHILLED BEAMS

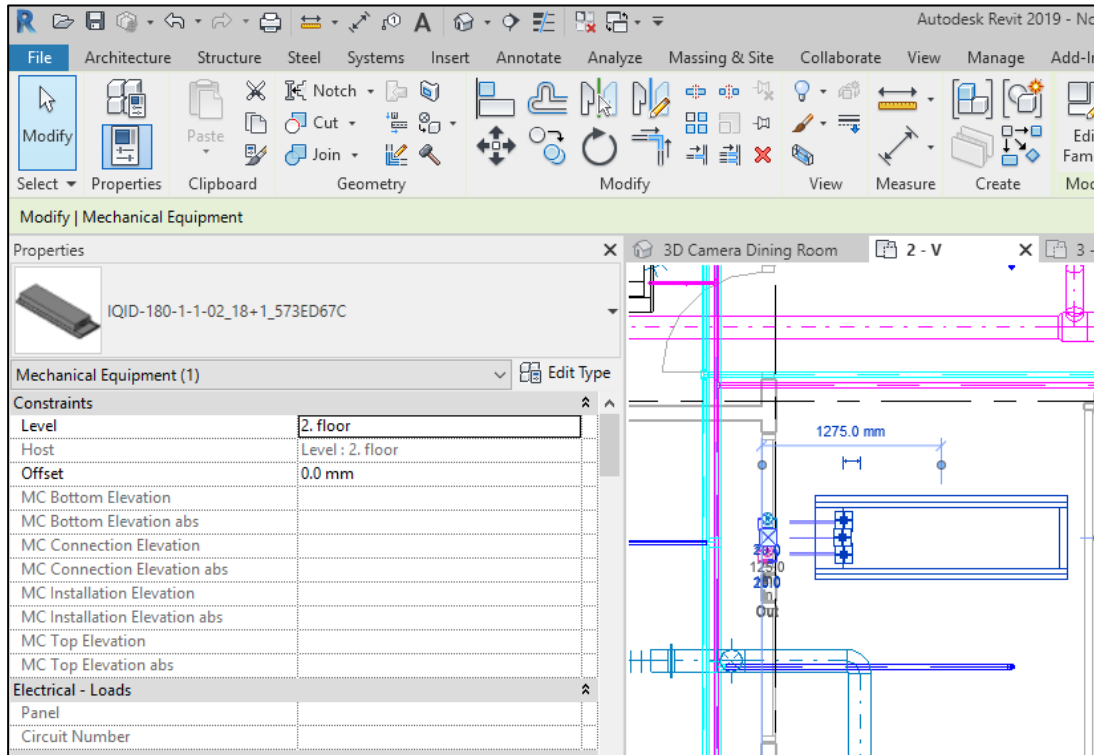
 **LYRA CHILLED BEAM**
 IQCB-060-12-1-06-0_3-3-3-3

[Calculate](#) [Export to MagiCAD](#)

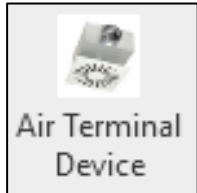
PROPERTIES	RESULT	DESCRIPTION	DOCUMENTS
Length: 60 cm / 2 feet			*
Coil: Standard	Power	641	W
▶ Nozzle settings: 3	Coil power	506	W
Connection diameter: 125	Supply air power	135	W
▶ ADVANCED PRODUCT PROPERTIES	Power (all units)	641	W
PARAMETERS	Sound Lp10A dBA	20	dB(A)
Number of units: 1	Air flow	25	l/s
Air flow: 25 l/s	Air flow (all units)	25	l/s
Air flow (all units): 25 l/s	Total air pressure drop	90	Pa
Water flow: []	Outlet water temp	16.4	°C
Inlet water temp: 14 °C	Throw length LQ2	3.2	m
Inlet water flow: 0.05 l/s	Water pressure drop	5.2	kPa
Ceiling temp: 24.5 °C	▶ ADDITIONAL RESULT		
Room temp: 24 °C			
Relative humidity: 50 %			

3. Export to MagiCAD button is visible if product is possible to transfer to MagiCAD. After clicking it, the SELECT is closed and the product is exported to MagiCAD.

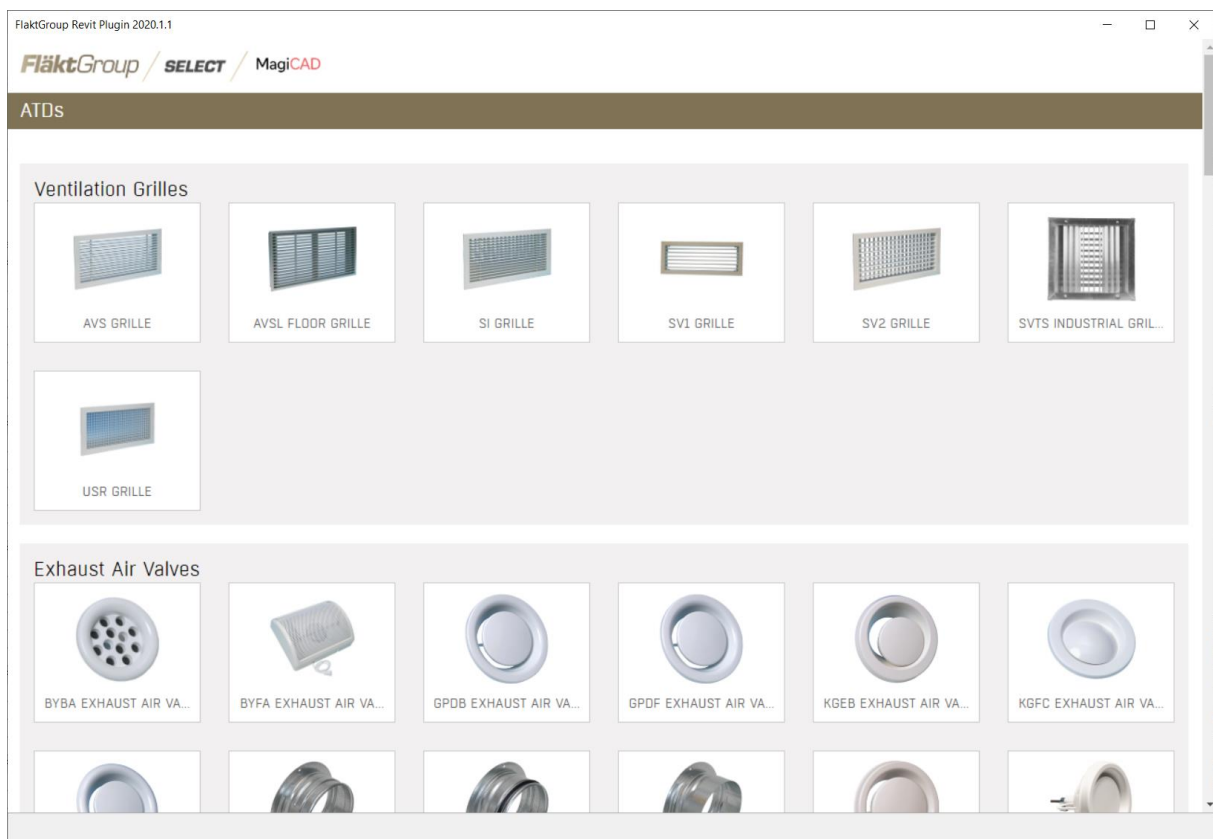
- Product is now exported to MagiCAD for Revit / Revit and user can continue working with MagiCAD / Revit. E.g. connect it to duct system and view product properties.



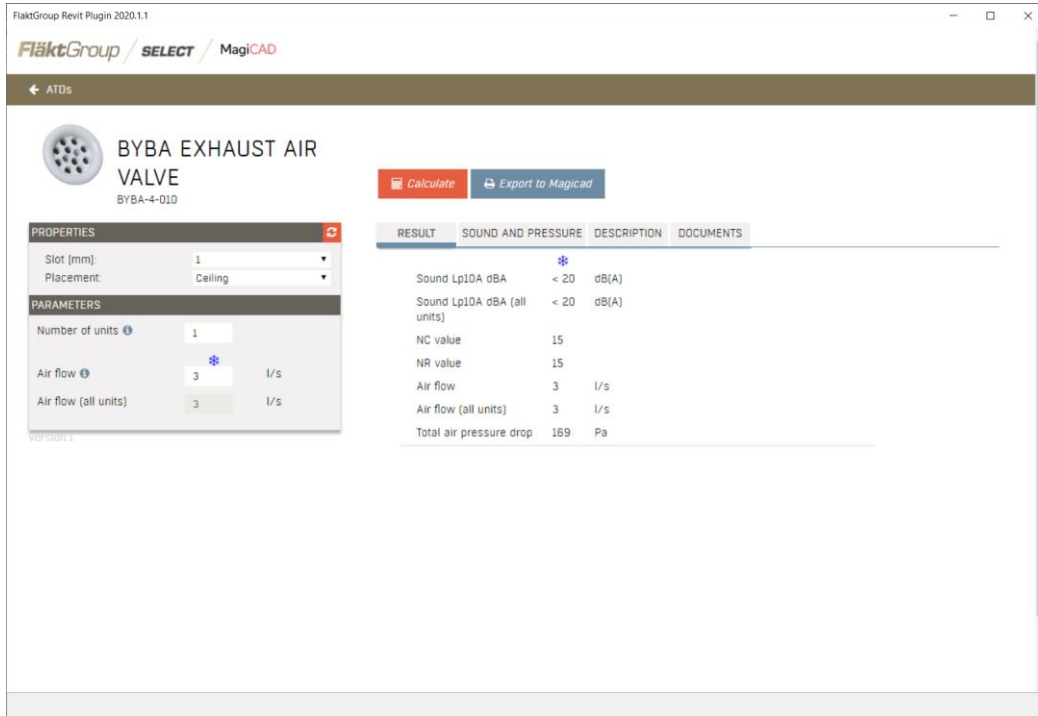
In order to add FläktGroup air terminal device, click Revit Add-Ins ribbon tab and Air Terminal Device button in FläktGroup panel and SELECT program will open



1. After SELECT has started, the right air terminal device can be selected from the product page.



- The appropriate product variant should be configured on SELECT Calculation page.



FlaktGroup Revit Plugin 2020.1.1

FlaktGroup / SELECT / MagiCAD

← ATDs

BYBA EXHAUST AIR VALVE
BYBA-4-010

Calculate Export to MagiCAD

PROPERTIES

Slot (mm): 1
Placement: Ceiling

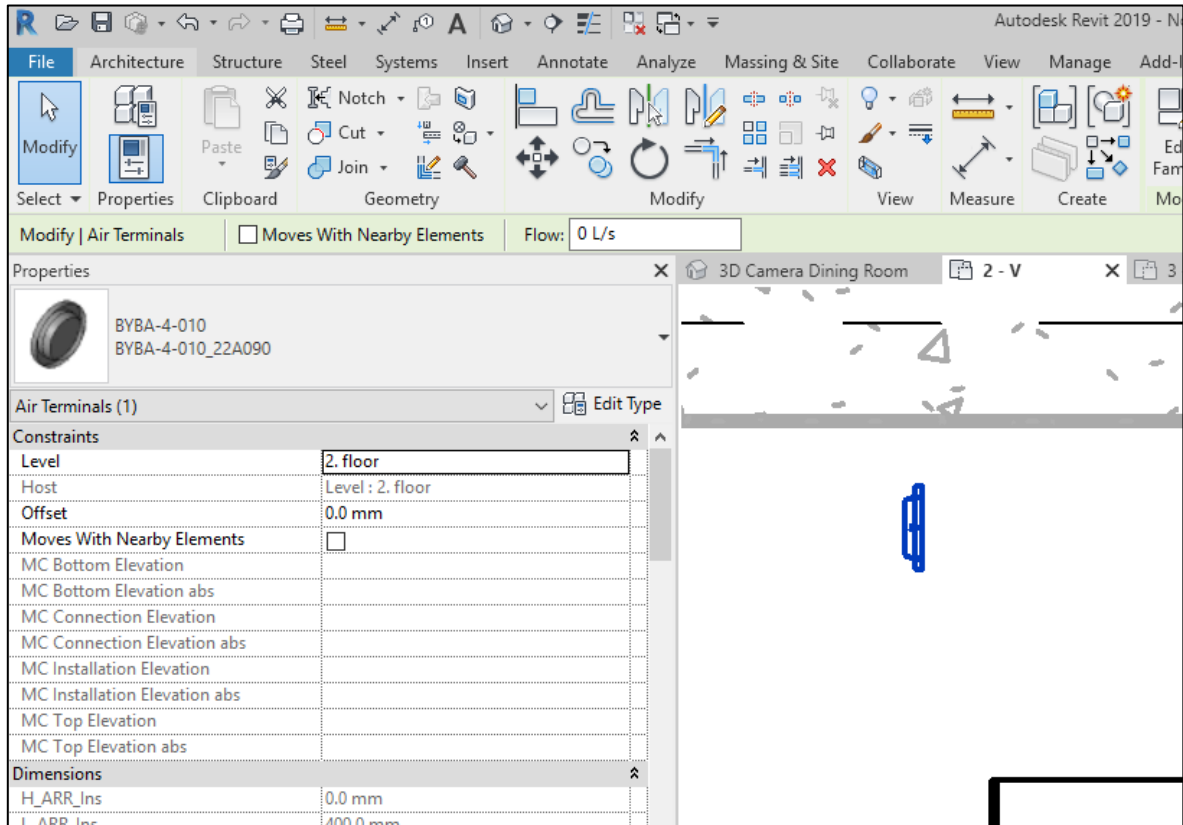
PARAMETERS

Number of units: 1
Air flow: 3 l/s
Air flow (all units): 3 l/s

RESULT	SOUND AND PRESSURE	DESCRIPTION	DOCUMENTS
Sound Lp10A dBA	< 20	dB(A)	
Sound Lp10A dBA (all units)	< 20	dB(A)	
NC value	15		
NR value	15		
Air flow	3	l/s	
Air flow (all units)	3	l/s	
Total air pressure drop	169	Pa	

- Export to MagiCAD button is enabled if it is possible to transfer the product to MagiCAD.

- Product is now exported to MagiCAD for Revit / Revit and user can continue working with MagiCAD / Revit. E.g. connect it to duct system and view product properties.

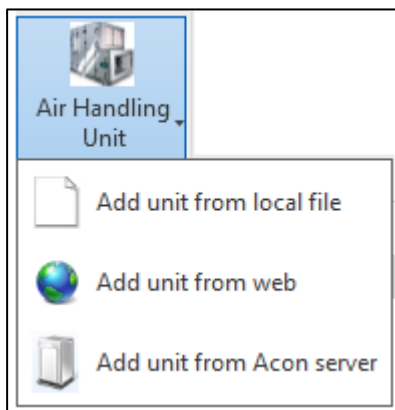


Inserting FläktGroup products from Acon

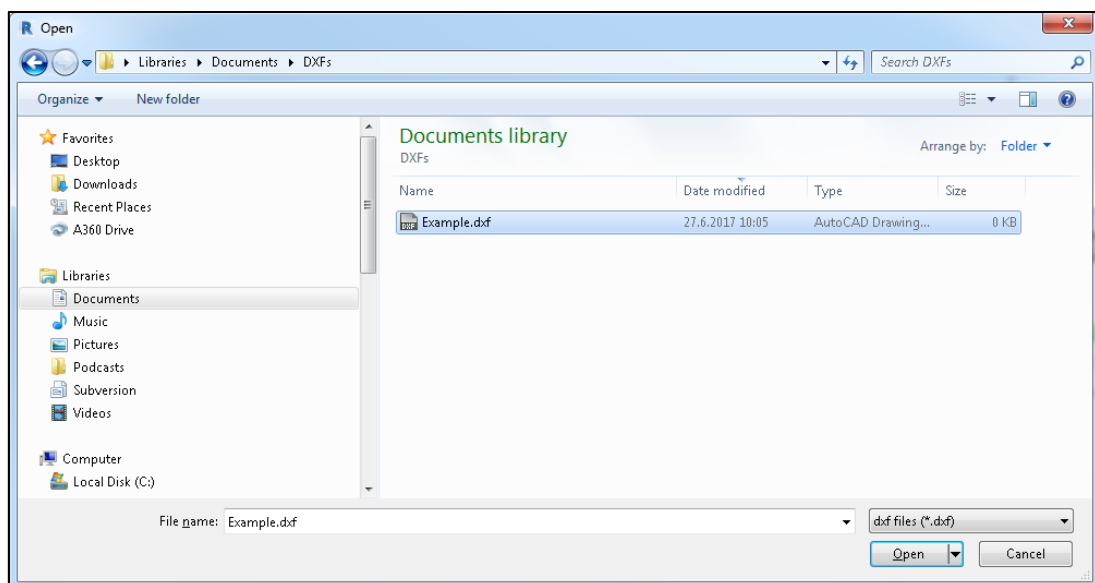
In order to add FläktGroup air handling unit, click Revit Add-Ins ribbon tab and Air Handling Unit button in FläktGroup panel.



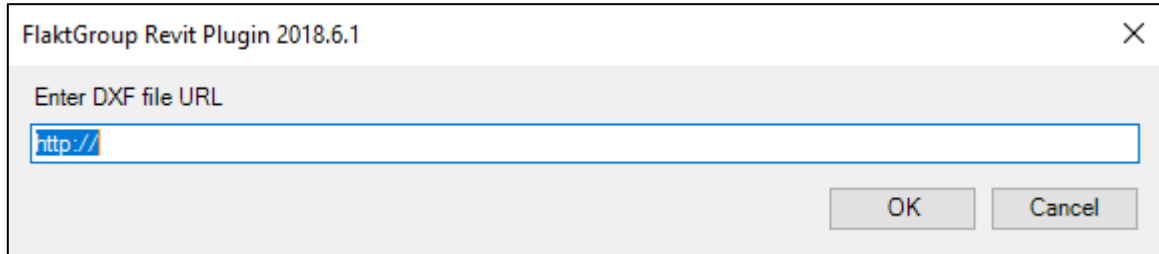
1. Select how you want to import unit to Revit from options.



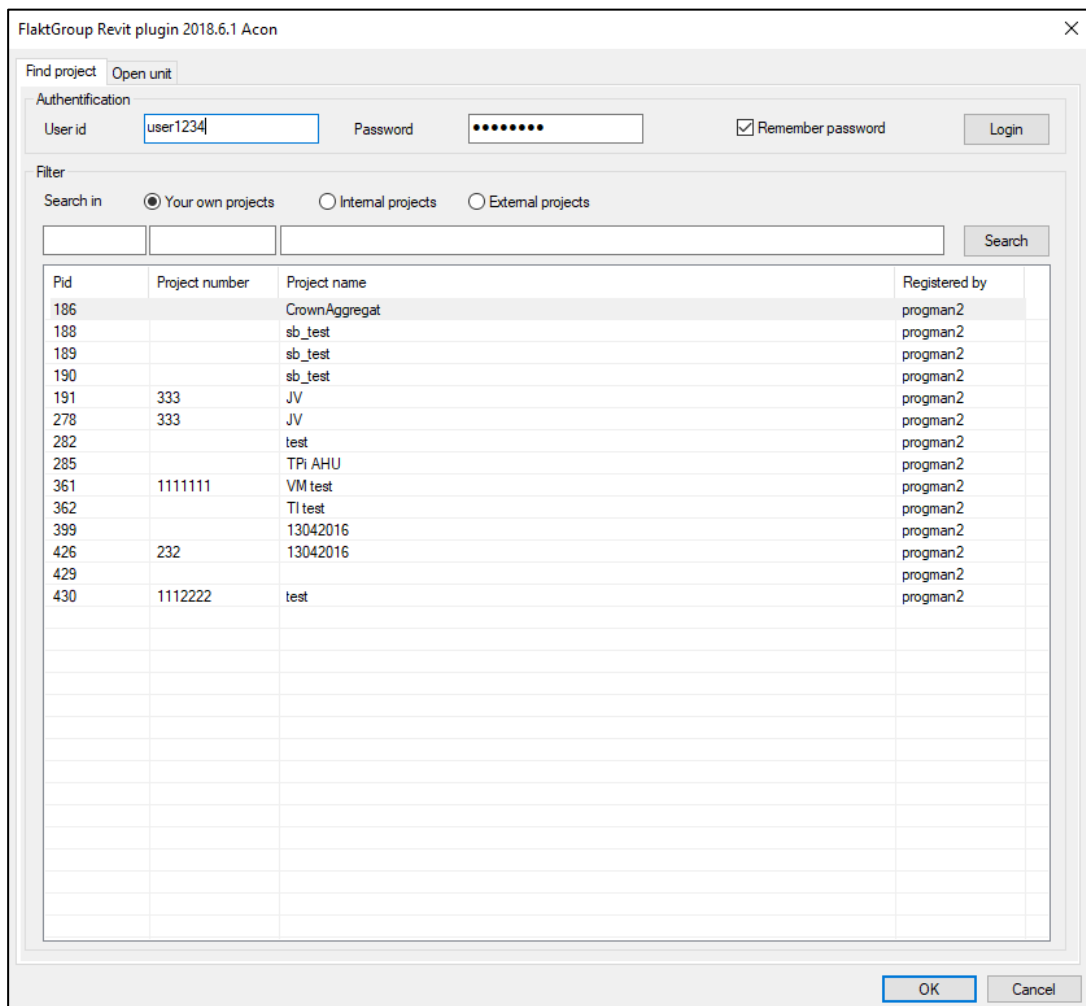
2. Add unit from local file. Select unit's dxf-file provided by Acon. Unit must be saved with 3D - option, otherwise Revit cannot read the file.



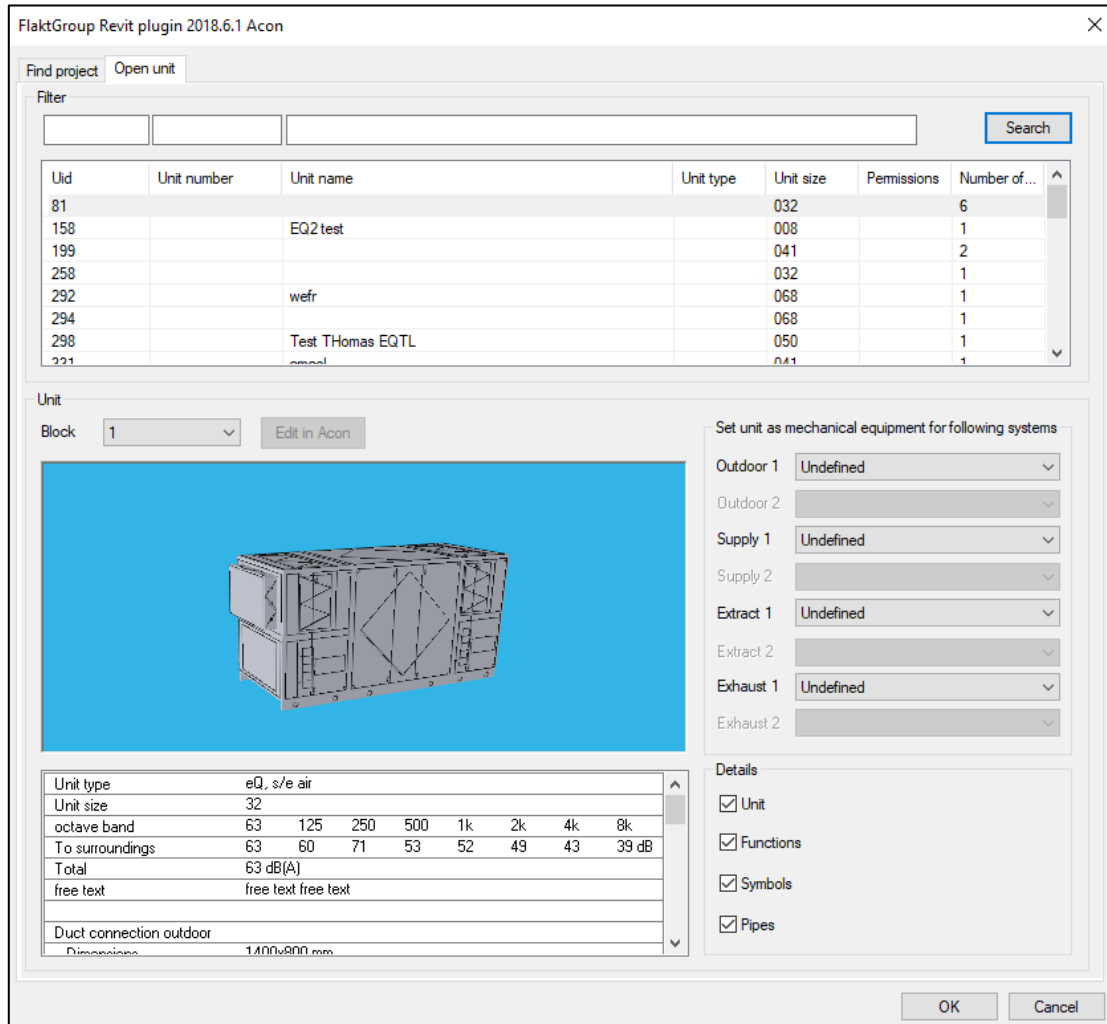
3. Add unit from web. You need the URL address of the unit to get



4. Add unit from Acon server. Input user id and password which are same than in Acon Air Handling Unit program and login. Then select project from list.



- Unit can be selected from the list. If AHU has also duct component, those can be selected in Block combo.



After selections, click Ok and insert Ahu to Revit. Product is now exported to MagiCAD for Revit / Revit and user can continue working with MagiCAD / Revit. E.g. connect it to duct system and view product properties.