



EXselectPRO MagiCAD plugin for AutoCAD

User guide

26/05/2023

Content

1	ABOUT THIS DOCUMENT	3
1.1	Installing the software.....	3
1.1.1	Required third-party software.....	3
1.1.2	Installation	3
1.2	Starting the program.....	4
1.3	EXselectPRO MagiCAD plugin for AutoCAD functions	5
1.3.1	Import EXselectPRO AHU	6
1.3.2	Validate EXselectPRO AHU.....	8
1.3.3	View EXselectPRO AHU data.....	8

1 About this document

This document contains instructions on using *EXselectPRO MagiCAD plugin for AutoCAD*. Plugins allows inserting Exhausto air handling units into to MagiCAD or AutoCAD drawing.

1.1 Installing the software

1.1.1 Required third-party software

EXselectPRO MagiCAD plugin for AutoCAD works with the following MagiCAD for AutoCAD versions

- MagiCAD 2023 and AutoCAD 2019-2023
- MagiCAD 2024 and AutoCAD 2021-2024

1.1.2 Installation

1. Download setup file from
<https://portal.magicad.com/download/ProductSearch?searchStr=Exhausto&platform=&productClass=&activationId=&categoryId=3>
2. Install EXselectPRO MagiCAD plugin.

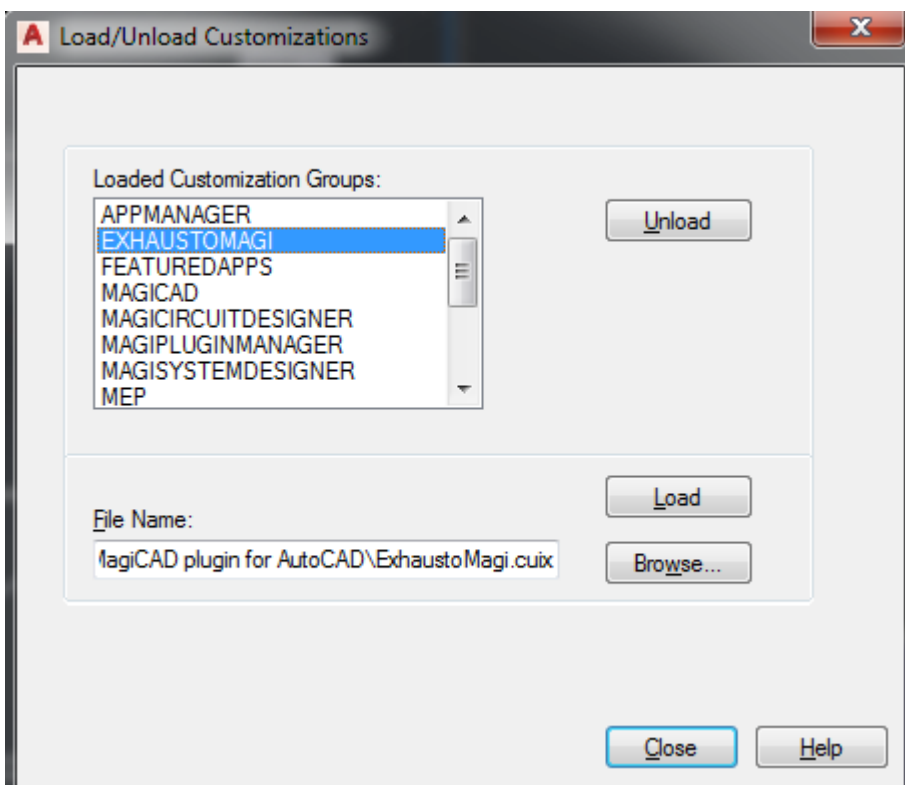
Administrator privileges are recommended for installation. **Note if you have several AutoCAD versions on your workstation:**

Before you run the installation program, start MagiCAD to make sure that *EXselectPRO MagiCAD Plugin* installs on the same AutoCAD platform as MagiCAD.

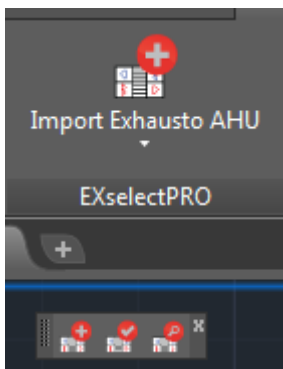
1.2 Starting the program

Before you start using *EXselectPRO MagiCAD Plugin*, start MagiCAD and open a Ventilation and Piping project.

If the plugin ribbon button or toolbar is not visible in AutoCAD, you need to load the customization file (.cuix) manually. Run **CULOAD** (or **MENULOAD**) in AutoCAD, and browse the customization file from the directory where you installed the program (by default, the directory is *C:\ProgramData\Exhausto\EXselectPRO MagiCAD plugin for AutoCAD*).



When you select *Load*, *EXselectPRO* toolbar and ribbon button appears on the desktop.



Next time you use AutoCAD, the customization file is automatically loaded.

1.3 EXselectPRO MagiCAD plugin for AutoCAD functions

Main functions

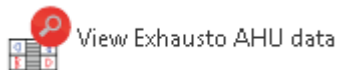
Plugin contains the following functions:



Opens the File Open dialog from where user can select MagiCAD AHU import file. These MagiCAD AHU import files can be exported from Exhausto's air handling unit dimensioning software EXselectPRO. User can insert air handling units included in selected file into MagiCAD drawing.

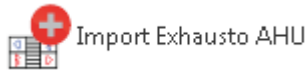


Validates Exhausto air handling unit. Validates the selected air handling unit against the current working point. If working point has changed significantly, it is recommended to re-dimension the AHU in ExSelectPro with the updated working point.



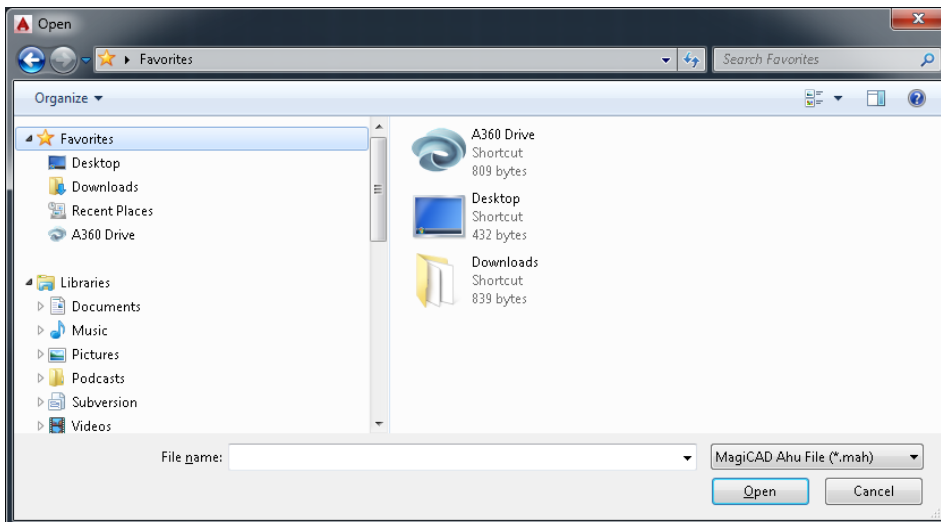
Allows user to view technical data of the selected product. The selected product can be air handling unit or duct component which is dimensioned by EXselectPRO.

1.3.1 Import EXselectPRO AHU



Follow these steps for Importing EXselectPRO's air handling unit into MagiCAD drawing:

1. Before Import EXselectPRO AHU -operation from the plugin is used, air handling unit(s) needs to be first exported from EXselectPRO. This part is can be done for example by Exhausto. They will then deliver the exported file to designer. Thus, designers do not necessarily need to use EXselectPRO in order to use this functionality.
2. Click *Import EXselectPRO AHU* button from plugin's ribbon panel in AutoCAD. If MagiCAD is installed, plugin ribbon panel is located in MagiCAD plugins tab.

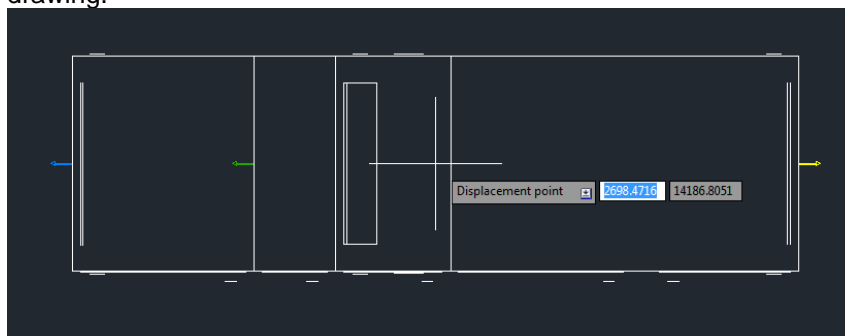


3. User should browse to the folder where export file is located. EXselectPRO generates .mah-files which are supported by this plugin.

- Once user has chosen the file and clicked open button, available products are loaded into installation dialog:



- Available products are shown in list view on the left side of the dialog. Geometry of the product is displayed on the top right side. Before installing product to drawing, user needs to first select MagiCAD system (if MagiCAD drawing is opened) for each duct connection (for each product installed to the drawing). Also installation height of the product can be defined here.
- You are able to open the printout of the air handling unit by clicking “Open” link located in technical details view. Printout contains more detailed information about selected AHU.
- Once MagiCAD systems have been defined for all the products, installation can be started by clicking insert button.
- Products can be placed to the drawing one by one by dragging them to wanted position in the drawing.



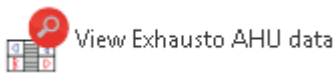
1.3.2 Validate EXselectPRO AHU



Follow these steps for Validating EXselectPRO's air handling unit into MagiCAD drawing:

1. Click Validate EXselectPRO AHU button from plugin's ribbon panel(or toolbar) in AutoCAD.
2. Select air handling unit from drawing which will be validated.
3. Validation result is displayed for the user. Validation checks if the air flow and pressure drop ductwork still matches to the dimensioned air flow / pressure drop in the EXselectPRO. There is 5% tolerance before the warning message is displayed.

1.3.3 View EXselectPRO AHU data



Follow these steps for Viewing EXselectPRO's air handling unit's data:

1. Click View EXselectPRO AHU data button from plugin's ribbon panel(or toolbar) in AutoCAD.
2. Install dialog will be shown. This dialog is same as in Import EXselectPRO AHU procedure. Only difference is that MagiCAD systems and installation height are not enabled. Printout can again be viewed by clicking Open link from technical details view.

