



Crenna MagiCAD plugin

User guide

03/06/2024

Content

GENERAL	3
About this document	3
Installing the software	3
Required third-party software	3
Installation	3
Starting the program	4
FUNCTIONS	5
Crenna toolbar	5

General

About this document

This document contains instructions for using *Crenna MagiCAD plugin*. With Crenna MagiCAD plugin you can easily select silencer from various types of silencers and export them into MagiCAD project and drawing.

Installing the software

Required third-party software

Crenna MagiCAD plugin works with the following MagiCAD for AutoCAD versions

- MagiCAD 2024 and AutoCAD 2021-2024
- MagiCAD 2025 and AutoCAD 2021-2025

Installation

1. Download setup file from
<https://portal.magicad.com/Download/ProductSearch?searchStr=Crenna&categoryId=3>
2. Run the Crenna MagiCAD plug-in installer on your workstation.

Administrator privileges are recommended for installation.

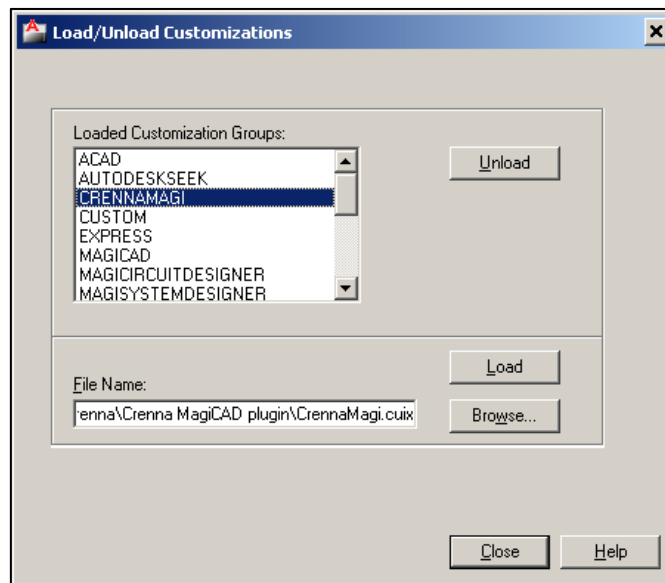
Note if you have several AutoCAD versions on your workstation:

Before you run the installation program, start MagiCAD to make sure that *Crenna MagiCAD Plugin* installs on the same AutoCAD platform as MagiCAD.

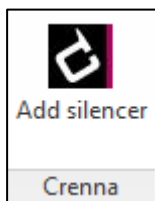
Starting the program

Before you start using *Crenna MagiCAD Plugin*, start MagiCAD and open a Ventilation project.

If the plugin is not loaded automatically after setup, run the **CULOAD** (or **MENULOAD**) in AutoCAD, and browse the customization file from the directory where you installed the program (by default, the directory is *C:\Program Files\Crenna*). When you first time start using *Crenna MagiCAD Plugin*, you need to load the customization file (*CrennaMagi.cuix*) manually.



When you click Load, Crenna toolbar and ribbon panel button appears on the AutoCAD.



Next time you use the AutoCAD, the customization file is automatically loaded.

Information for network administrators:

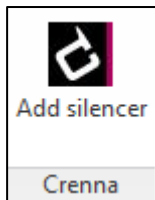
Plugin requires a connection to Crenna web site. Internet Explorer control is used to browse web pages from crenna.se.

Standard HTTP GET (TCP, default port 80 should be used) method is used to retrieve files from the server. GET response includes file (mime application/octet-stream). Your network firewall should allow such connections.

Functions


Crenna toolbar

Start Crenna MagiCAD plugin by clicking button.





Select duct and Crenna selection software will open. Airflow and duct size are imported from MagiCAD.

Crenna MagiCAD plugin 2012.6.1



Välkommen till Crennas projekteringsverktyg för MagiCAD!

Vi har marknadens bredaste sortiment av ljuddämpare och med vårt verktyg kan du även se dämpningen i de olika banden!

Objektnamn/märkning:

GRUNDFÖRUTSÄTTNINGAR
UTFÖRANDE
SORTERINGSPRIORITERING

PRESTANDA

Luftflöde (Vs)*

Tillåtet tryckfall (Pa)

Maximalt P-tal

OBS! Anges inget maximalt tillåtet tryckfall, utgår vi från ett tryckfall på max 40 Pa.

LJUDNIVA IN (från aggregat) (dB)

63	125	250	500	1k	2k	4k	8k
<input style="width: 30px;" type="text"/>	<input style="width: 30px;" type="text"/>	<input style="width: 30px;" type="text"/>	<input style="width: 30px;" type="text"/>	<input style="width: 30px;" type="text"/>	<input style="width: 30px;" type="text"/>	<input style="width: 30px;" type="text"/>	<input style="width: 30px;" type="text"/>

PLACERING

I kanal (sekundär ljuddämpare)

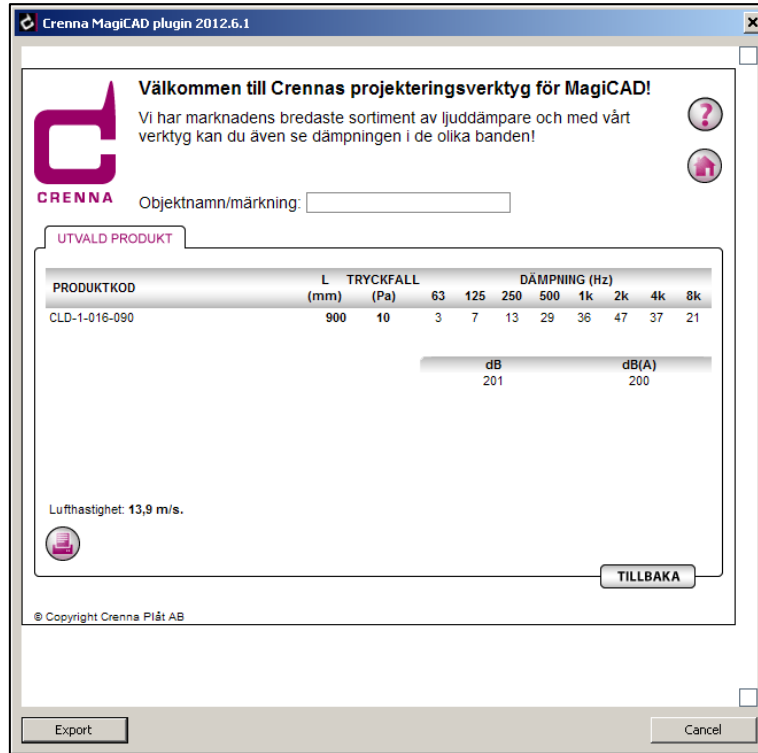
Nära aggregat (primär ljuddämpare)

HÄMTA URVAL

© Copyright Crenna Plåt AB

Export
Cancel

Select product and export it to MagiCAD by clicking Export button.



Place the product in to the drawing and continue designing in MagiCAD.

