



# **IV Produkt MagiCAD Plugin**

User guide

03/06/2024

## Content

<b>GENERAL</b> .....	<b>3</b>
About this document .....	3
Installing the software .....	3
Required third-party software .....	3
Installation .....	3
Starting the program .....	4
<b>FUNCTIONS</b> .....	<b>5</b>
IV Produkt MagiCAD Plugin UI .....	5
Import product .....	5
Import Component .....	9
View Product Data .....	10

## General

### About this document

This document contains instructions on using IV Produkt MagiCAD plugin. IV Produkt MagiCAD plugin allows inserting of IV Produkt air handling units into to MagiCAD.

The air handling unit will be designed with IV Produkt Designer standalone application before the air handling unit can be imported to project with MagiCAD plugin. IV Produkt Designer software is available for download from IV Produkt website.

### Installing the software

#### Required third-party software

IV Produkt MagiCAD plug-in works with the following MagiCAD for AutoCAD versions

- MagiCAD 2024 and AutoCAD 2021-2024
- MagiCAD 2025 and AutoCAD 2021-2025

### Installation

1. Download setup file from  
[https://portal.magicad.com/download/ProductSearch?searchStr=IV Produkt&categoryId=3](https://portal.magicad.com/download/ProductSearch?searchStr=IV%20Produkt&categoryId=3)
2. Run the IV Produkt MagiCAD plug-in installer on your workstation.

Administrator privileges are recommended for installation.

#### **Note if you have several AutoCAD versions on your workstation:**

Before you run the installation program, start MagiCAD to make sure that *IV Produkt MagiCAD Plug-in* installs on the same AutoCAD platform as MagiCAD.

## Starting the program

Before you start using *IV Produkt MagiCAD plug-in*, (re)-start MagiCAD and open or create a new Ventilation and piping project.

The plug-in is automatically loaded and is ready to be used once AutoCAD is started next time after installing the plug-in. If not so CUI-file needs to be loaded manually.

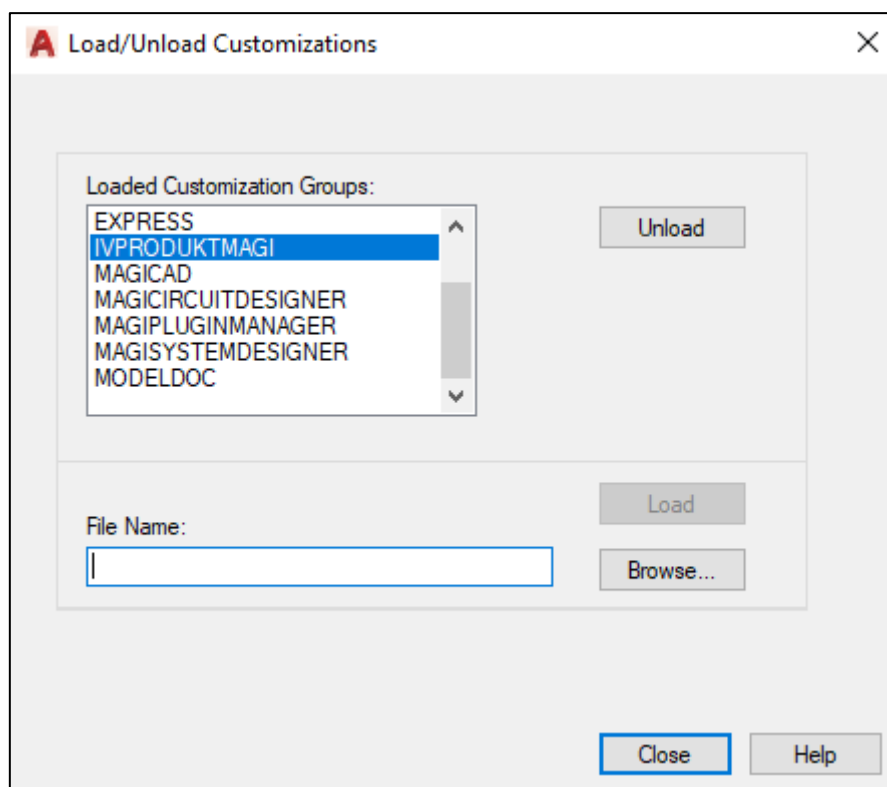
Run **CUILOAD** in AutoCAD, and browse the customization file from following directory:

Directory for cui/cuix-file is by default for

**XP:** C:\Documents and Settings\All Users\Application Data\ IV Produkt MagiCAD plugin

**Win7:** C:\Users\All Users\ IV Produkt MagiCAD plugin or  
 C:\ProgramData\ IV Produkt MagiCAD plugin

**Win8/Win8.1/Win10:** C:\ProgramData\ IV Produkt MagiCAD plugin

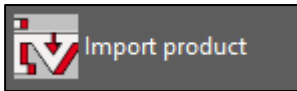


When you select Load, IV Produkt toolbar and ribbon panel button are loaded.

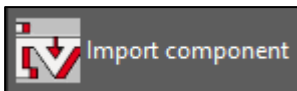
## Functions

### IV Produkt MagiCAD Plugin UI

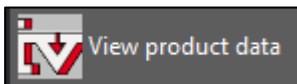
Plug-in contains following functions:



- Opens the Import IV products dialog from where user can choose products to be imported.

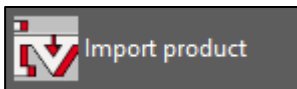


- Opens the same dialog but only for importing components to unit already inserted to the drawing.



- Allows user to view technical data of the selected product.

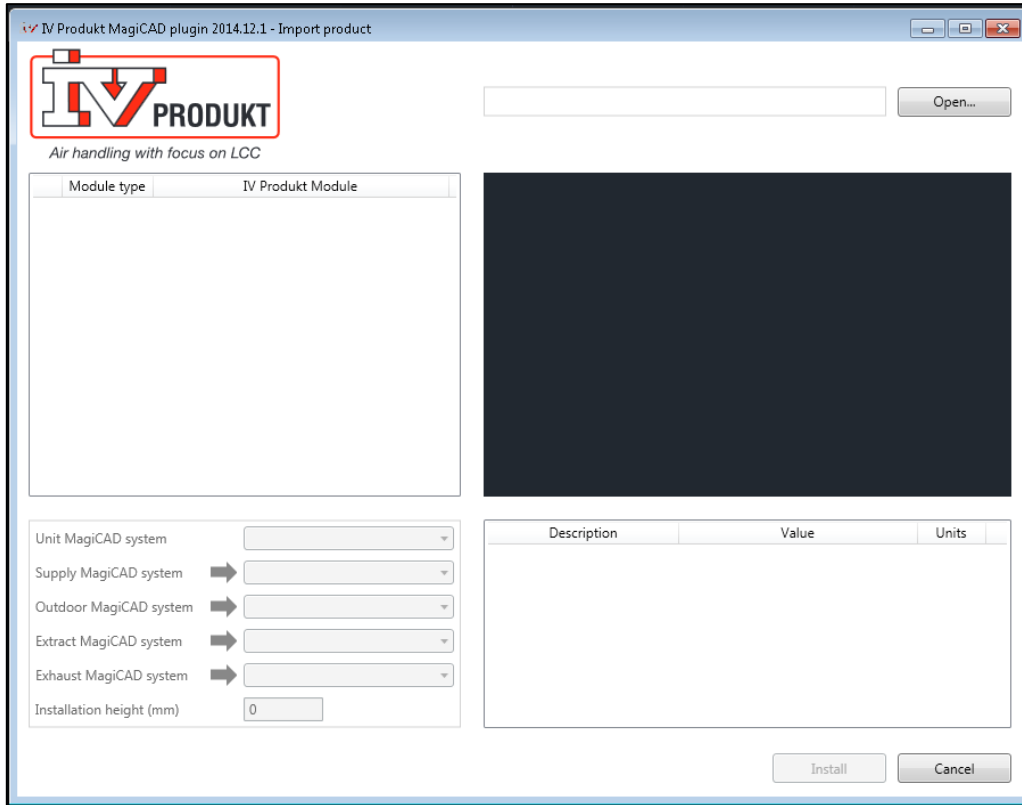
### Import product



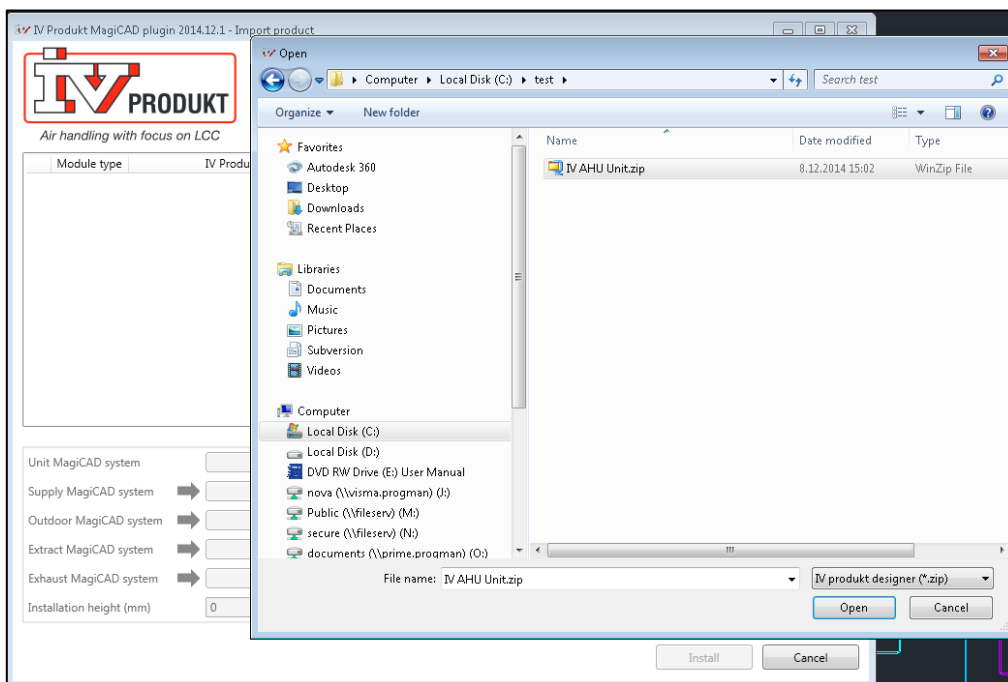
Follow these steps for Inserting IV Produkt air handling unit into MagiCAD drawing:

1. Select Import Product button from IV Produkts toolbar or ribbon panel in AutoCAD.

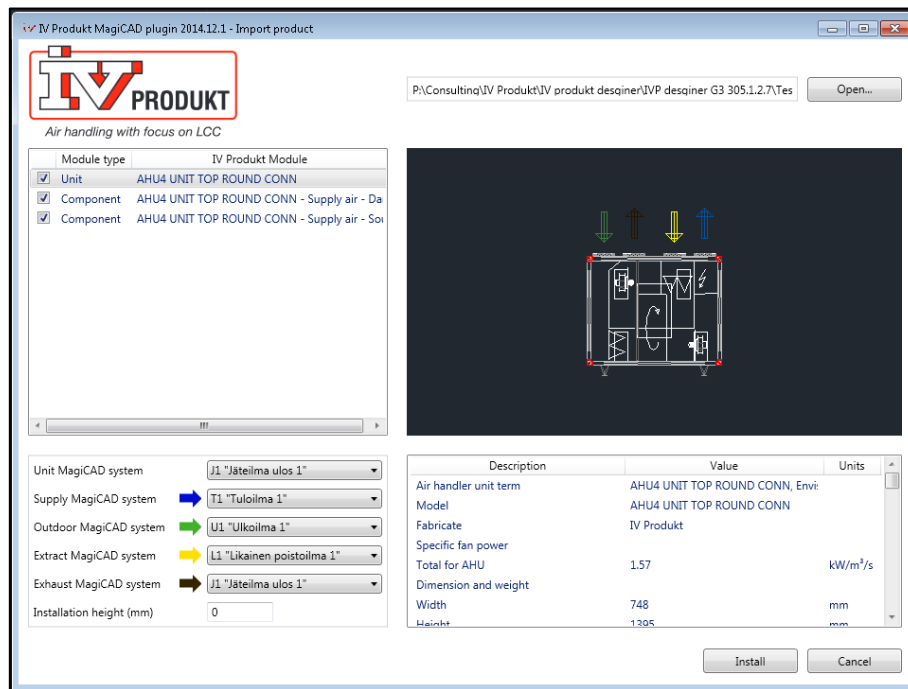
2. Following dialog is displayed for the user:



3. User proceeds by clicking Open... button. Open File Dialog is opened.

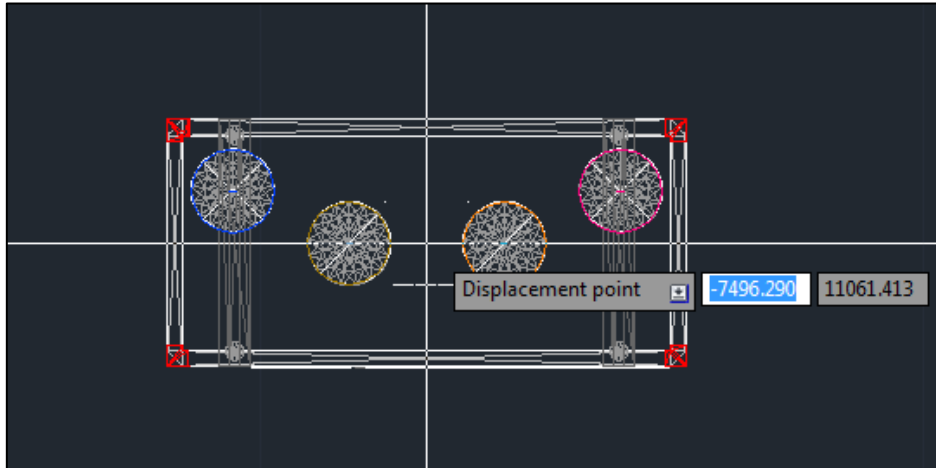


4. User should browse to the folder where export file generated by IV Produkt Designer is located. IV Produkt Designer generates zip files which are supported by the plug-in.
5. Once user has chosen the file and clicked open button, available products are loaded into installation dialog:



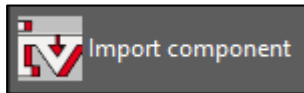
6. Available products are shown in list view on the left side of the dialog. Geometry of the product is displayed on the right side. Before installing product to drawing, user needs to first select MagiCAD system for each duct connection (for each product installed to the drawing). Also installation height of the product can be defined here.
7. Once MagiCAD systems have been defined for all products, installation can be started by clicking install button.

- Products can be placed to the drawing one by one by dragging them to wanted position in the drawing.

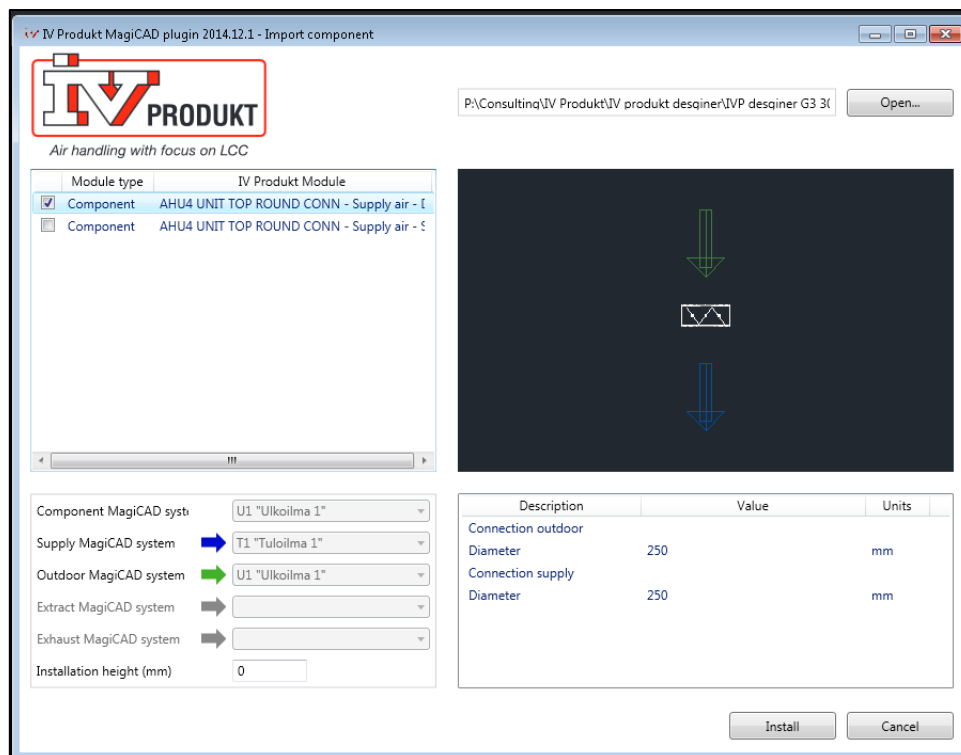




## Import Component

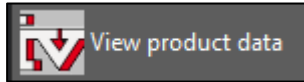


1. User starts import components operation from the plug-in.
2. User is prompted to select the AHU which external component(s) he/she wants to import (This is for reading the selected MagiCAD systems from AHU connections). Same system is set for the external component based on this information.
3. Open file dialog is displayed and user selects the .zip-file which was generated by the IV Produkt Designer.

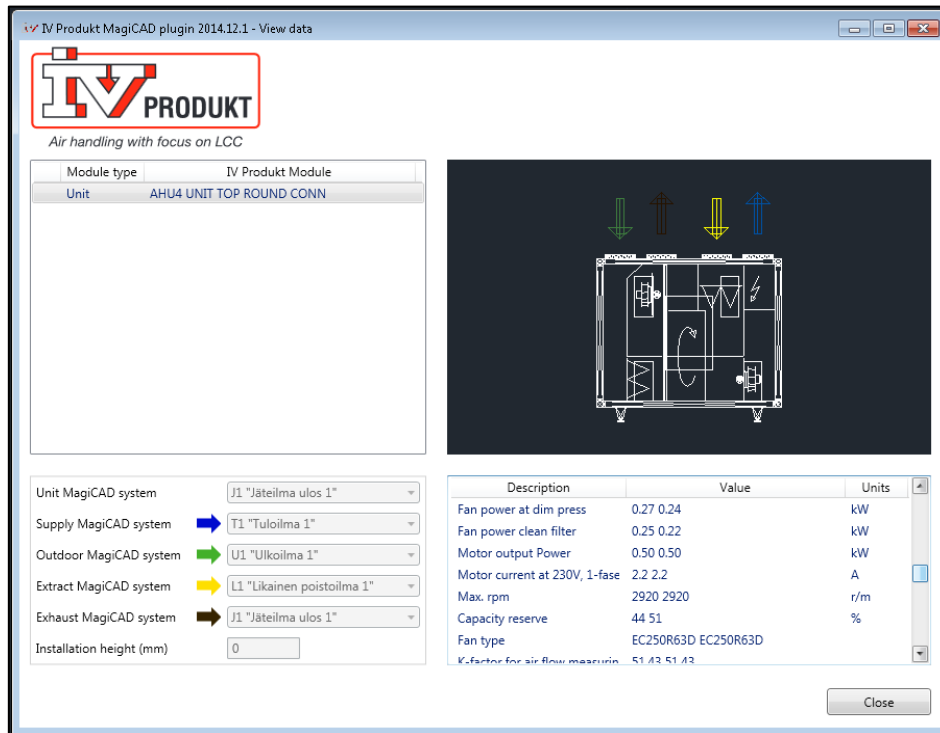


4. Available external components are displayed. User can choose from the list which external component(s) to import to the drawing. Notice that MagiCAD systems for connections have been selected automatically based on selected unit from the drawing.
5. Insert operation is started and user can place external component(s) to the drawing one by one. Ducts can be connected to the component(s) by normal MagiCAD means after the component is properly placed to the drawing.

## View Product Data



1. Operation is started by selecting View Product Data button. View Product Data dialog opens:



2. Technical data of the selected product is displayed in bottom left corner of the dialog. MagiCAD systems are displayed in left bottom corner, but they can't be modified in View Product Data dialog.