
User's Guide



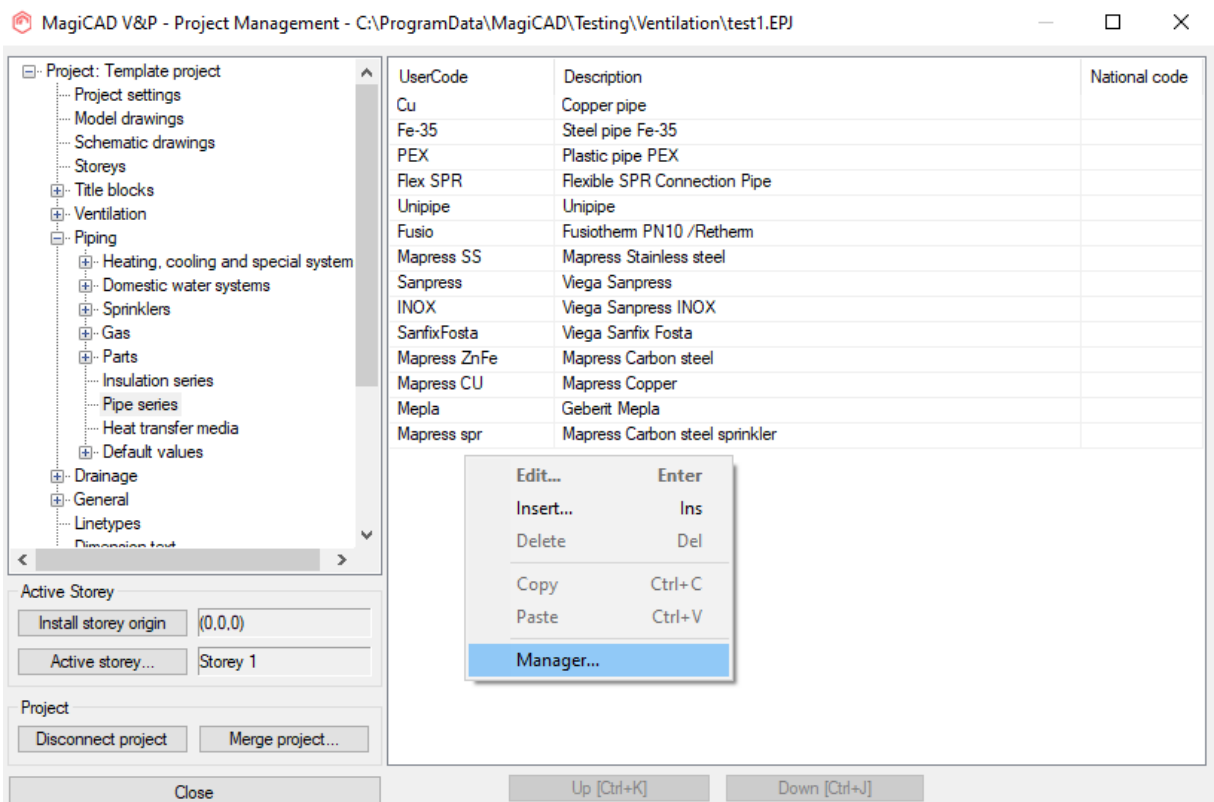
LK Systems Template for MagiCAD for AutoCAD Instructions

Document revision 2024-12-18

LK Systems template

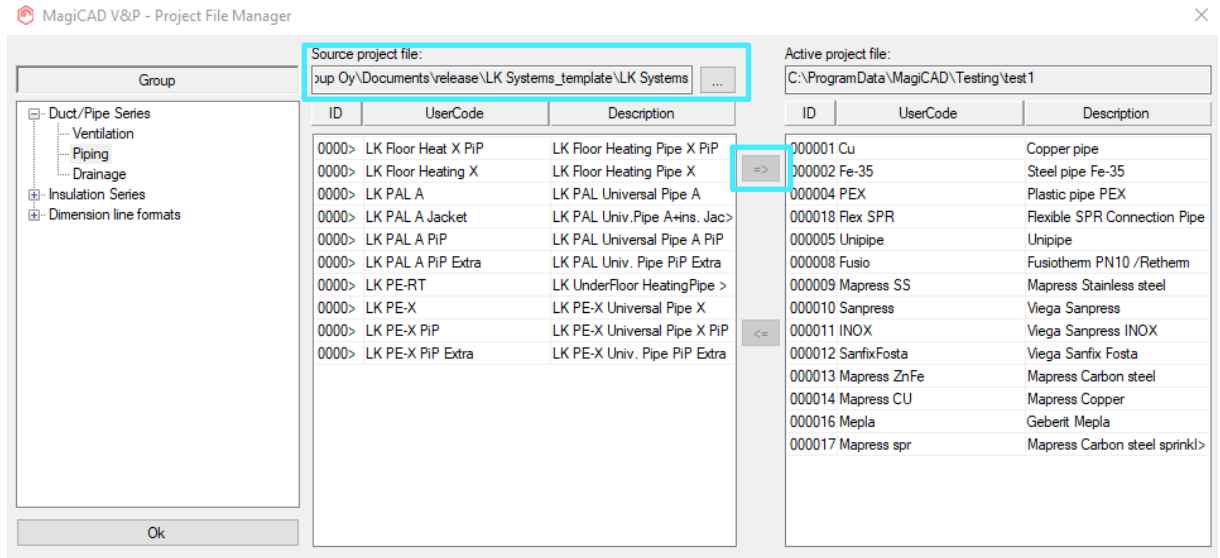
Taking the Pipe serie template into use

1. Download the .zip file to your computer. Unzip the file to a suitable location.
2. Start MagiCAD, open the project management window, and choose **Pipe series** from the left part of the window.
3. Click the right button of your mouse and choose **Manager**.

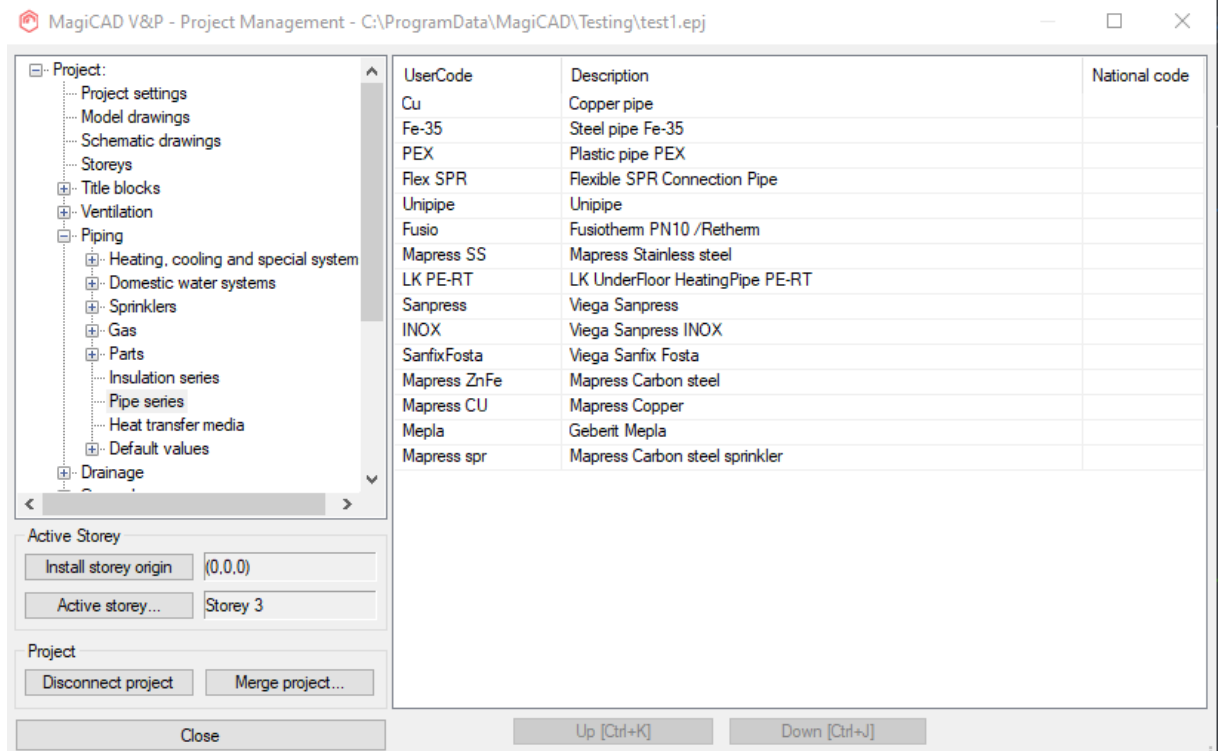


- Change the source project file to LK Systems.EPJ.

Select pipe serie(s) and add it to your project file and press OK.



New LK Systems pipe serie is added to the current project file and can be used in the drawing.



MagiCAD V&P - Heating & Cooling Pipe Options

Supply/Return Pipe Series: Size: Routing

Select series Locked Smart

Cu Copper pipe Locked Direct

Fe-35 Steel pipe Fe-35

PEX Plastic pipe PEX

Flex SPR Flexible SPR Connection Pipe Synchronize

Unipipe Unipipe

Fusio Fusiothem PN10 /Rethem

Mapress SS Mapress Stainless steel

LK PE-RT LK UnderFloor HeatingPipe PE-RT

Sanpress Viega Sanpress

INOX Viega Sanpress INOX

SanfixFost Viega Sanfix Fosta

Mapress Zn Mapress Carbon steel

Mapress CU Mapress Copper

Mepla Geberit Mepla

Mapress sp Mapress Carbon steel sprinkler

Add new...

Alignment

Extra offset

0.0

Pipe positioning from cursor pipe

Distance [mm]: 100

Pipe Positioning After Vertical

Smart (no crossing)

Radius for flexible pipes

Set

100.0

Branches

Status: Not defined

Installation code: Not selected

Close