



# Jeven MagiCAD Cloud Plugin for AutoCAD

13/04/2026

**Content**

**PURPOSE OF THE PROGRAM .....3**

**PROGRAM INSTALLATION .....3**

**STARTING THE PROGRAM .....4**

**HOW TO USE JEVEN MAGICAD PLUGIN.....5**

## **Purpose of the program**

System Jeven Product Service aims to help you calculate air flows and select kitchen hoods for all your professional kitchen projects.

System Jeven Product Service personnel make upon request complete proposals of the hood drawings with pressure and airflow data and send them to you by e-mail.

With the Jeven MagiCAD plugin for AutoCAD you are able to import these drawings to the MagiCAD for AutoCAD software on your computer.

The Jeven MagiCAD plugin for AutoCAD is available on the homepages [www.jeven.com](http://www.jeven.com) and [www.magicad.com](http://www.magicad.com)

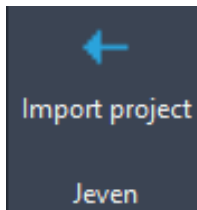
Please select the closest System Jeven Product Service office to you on our homepage [www.jeven.com](http://www.jeven.com) and contact us for more information.

## **Program installation**

1. Jeven MagiCAD plugin supports the following AutoCAD and MagiCAD versions:
  - MagiCAD 2026 and AutoCAD 2023-2026
  - MagiCAD 2027 and AutoCAD 2023-2027
2. The installation package is available at MagiCAD's website <https://portal.magicad.com/download/ProductSearch?searchStr=Jeven&categoryId=3>
3. Install the program by starting Jeven MagiCAD plugin for AutoCAD xxxx.x.x.msi and follow the setup instructions, leave the serial number field blank.

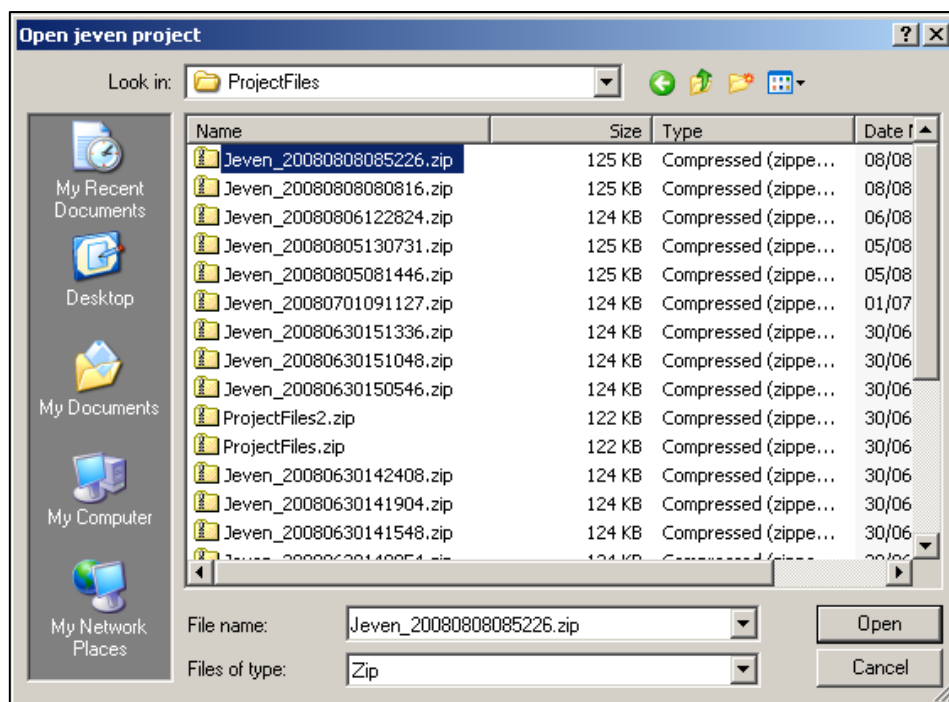
## Starting the program

1. Start the AutoCAD software. After installation the plugin panel and buttons can be found from MagiCAD Connect tab.
2. Jeven toolbar and ribbon panel button appears on AutoCAD:



## How to use Jeven MagiCAD plugin

1. System Jeven Product Service sends the project drawings to the customer in a ZIP file. Save the ZIP file to your computer.
2. Run "Import Jeven project" command by clicking the Jeven toolbar button or ribbon panel button.
3. Find saved ZIP file and open it.



4. Select MagiCAD supply and exhaust duct systems and add a description.

