

Halton MagiCAD Cloud Plugin for Revit

13/04/2026

Content

1	GENERAL	3
1.1	About This Document.....	3
1.2	Installing the Plugin	3
1.2.1	Required Software.....	3
1.2.2	Installation	3
1.3	Starting the Plugin	3
2	HOW TO USE THE PLUGIN	4
2.1	Exporting Halton products from Halton HIT Design to Revit.....	4

1 General

1.1 About This Document

The purpose of Halton Revit plugin is to add Halton product to Revit or MagiCAD for Revit using Halton HIT design.

Revit plugin Add from HIT, calls Halton HIT Design software where user first may select the product, calculate the device and after that can be transfer device geometry, technical data, and calculation results into Revit.

1.2 Installing the Plugin

1.2.1 Required Software

Halton eHIT MagiCAD plugin for Revit works with the following MagiCAD and Revit versions.

Revit

- Revit 2024-2027.

MagiCAD for Revit (optional)

- MagiCAD 2026 with Revit versions 2024-2026.
- MagiCAD 2027 with Revit versions 2025-2027.

1.2.2 Installation

Administrator privileges are recommended for installation.

1. Download the installation package from MagiCAD portal.

<https://portal.magicad.com/download/ProductSearch?searchStr=Halton&categoryId=3>

2. Run the installer on your workstation.

1.3 Starting the Plugin

The plugin is automatically loaded, and it is ready to be used once Revit is started next time after the plugin installation.

After running the installation, Halton panel appears in MagiCAD Connect ribbon tab and the user can insert Halton product from Halton HIT Design, and product can be inserted to the Revit by using add from HIT function.



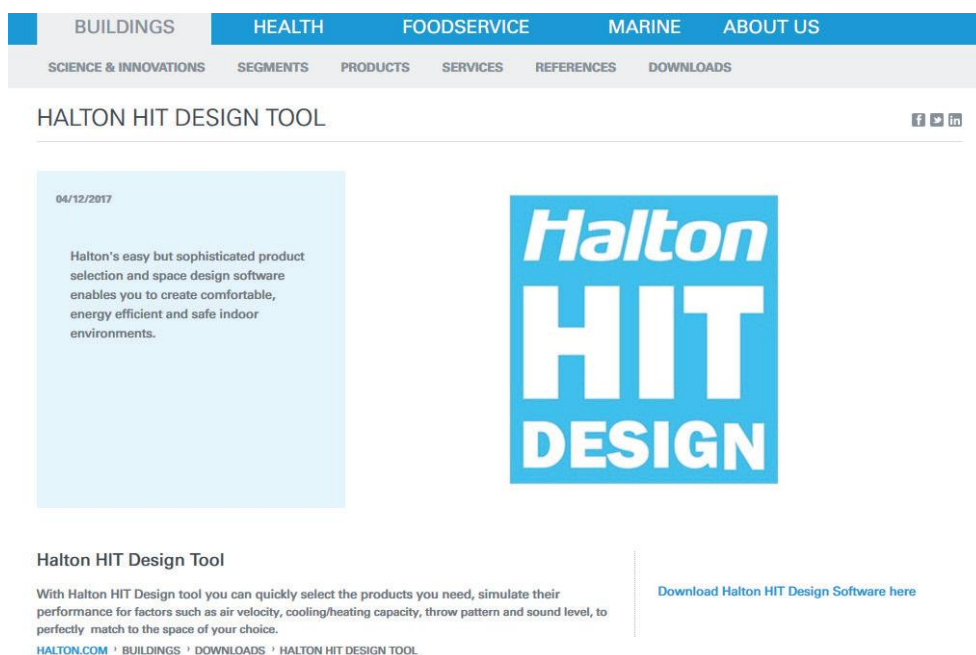
2 How to Use the Plugin

2.1 Exporting Halton products from Halton HIT Design to Revit

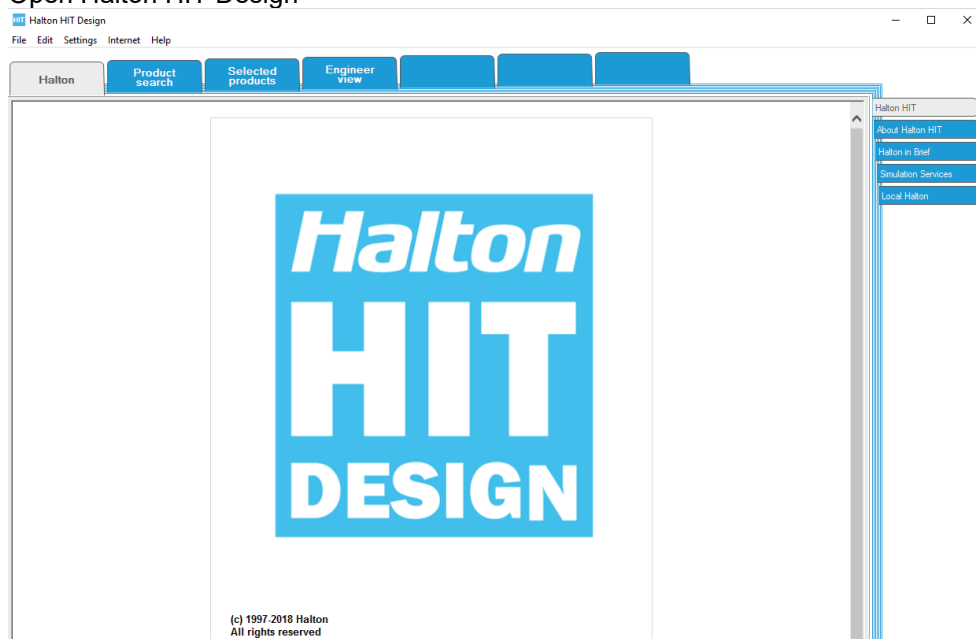
1. Download and install Halton HIT Design-program and open it.

Link for download:

<https://www.halton.com/product-selection-tools/>

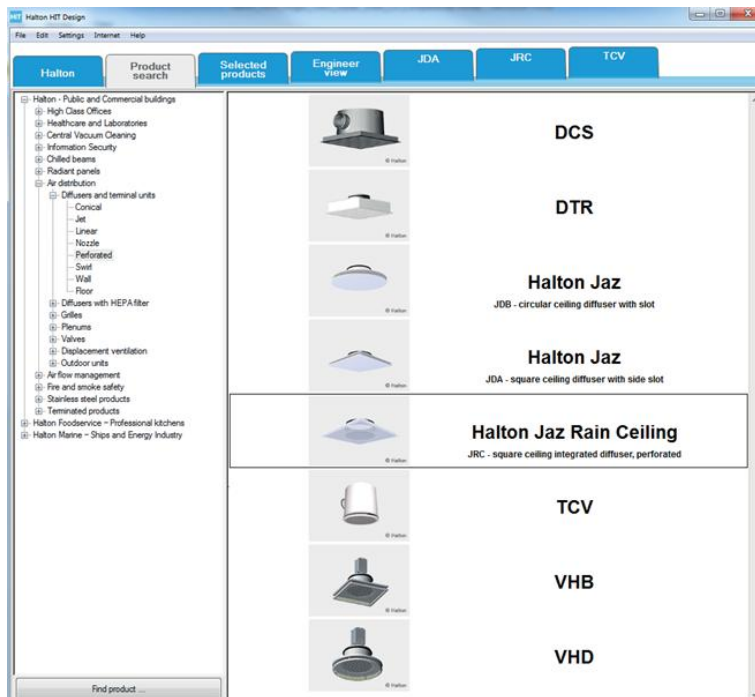


2. Open Halton HIT Design

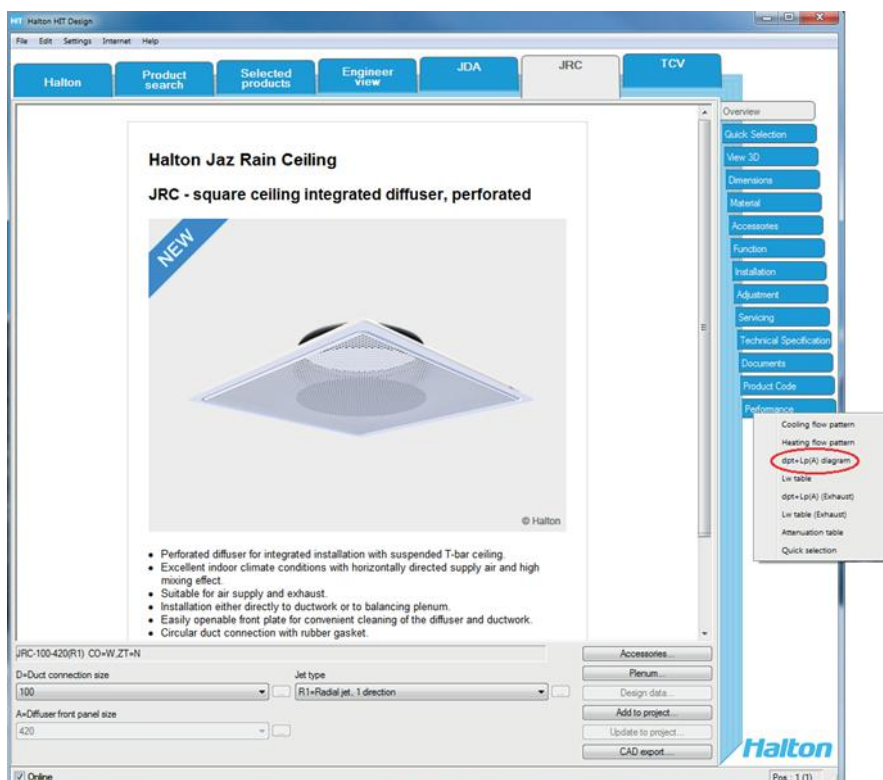


Example: Air diffuser

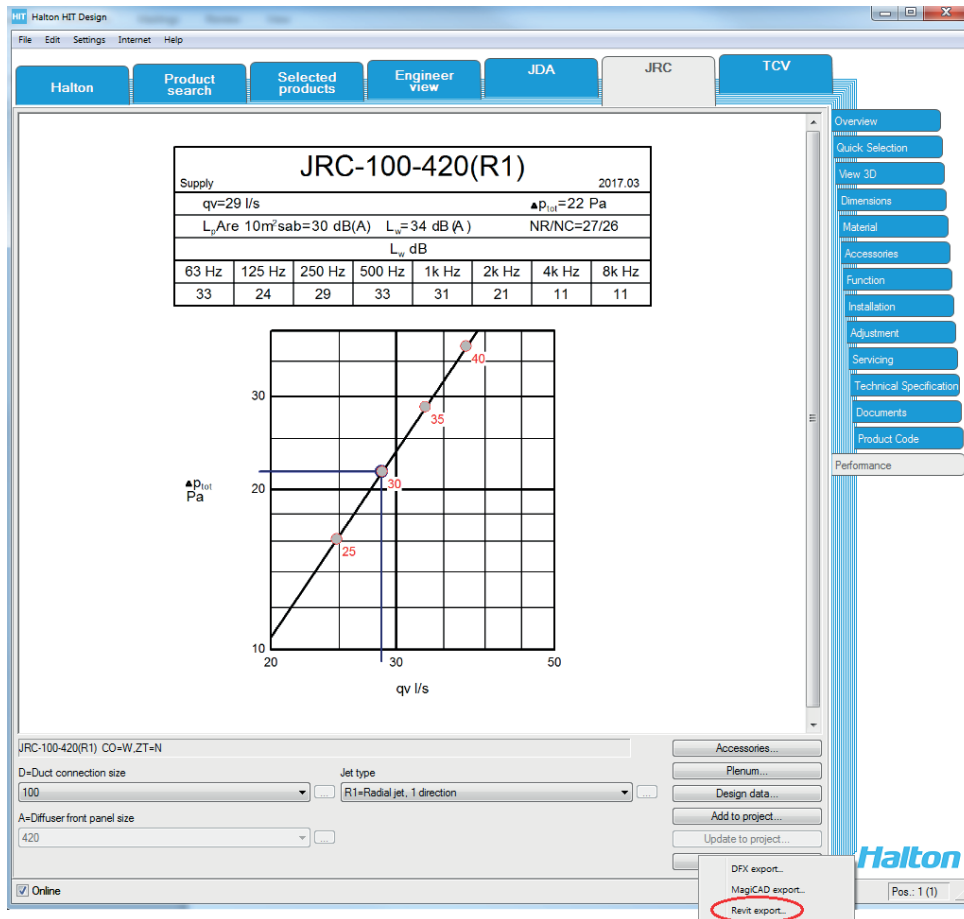
1. Select product in Halton HIT Design.



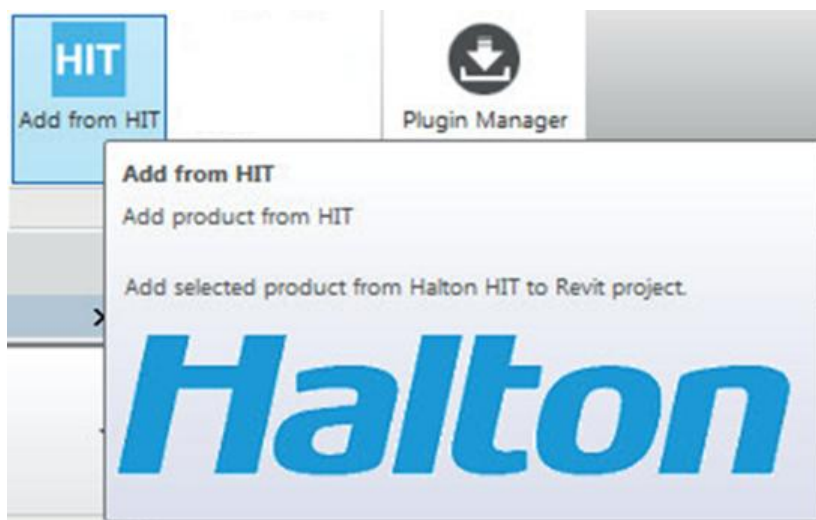
2. Product must be modelled before you may export it. Select in right hand side "Performance"-tab, and select 'dpt+Lp (A)' diagram.



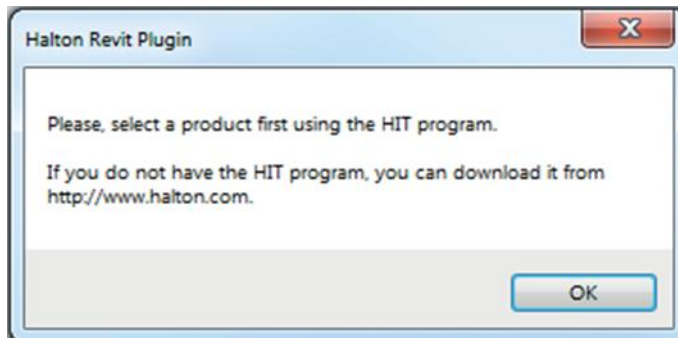
- After modelling is ready click then 'CAD export...' -button and select 'Revit export'...



- Actions in the Revit, after HIT Revit export: Open 'Adds-Ins' ribbon and click 'Add from HIT' image.



5. If product export failed from Halton HIT Design-program, you will get this message when you click Add from HIT image.



6. Click 'Add from HIT' -> the product will be downloaded to Revit.

