
User's Guide

MagiCAD[®]

ETS NORD Template Instructions

Document revision 2015-05-25

MagiCAD® Copyright © 1998-2015 Progman Oy. All rights reserved.

MagiCAD is a registered trademark of Progman Oy.

AutoCAD and Revit are registered trademarks of Autodesk Inc.

Windows is a registered trademark of Microsoft Corporation.

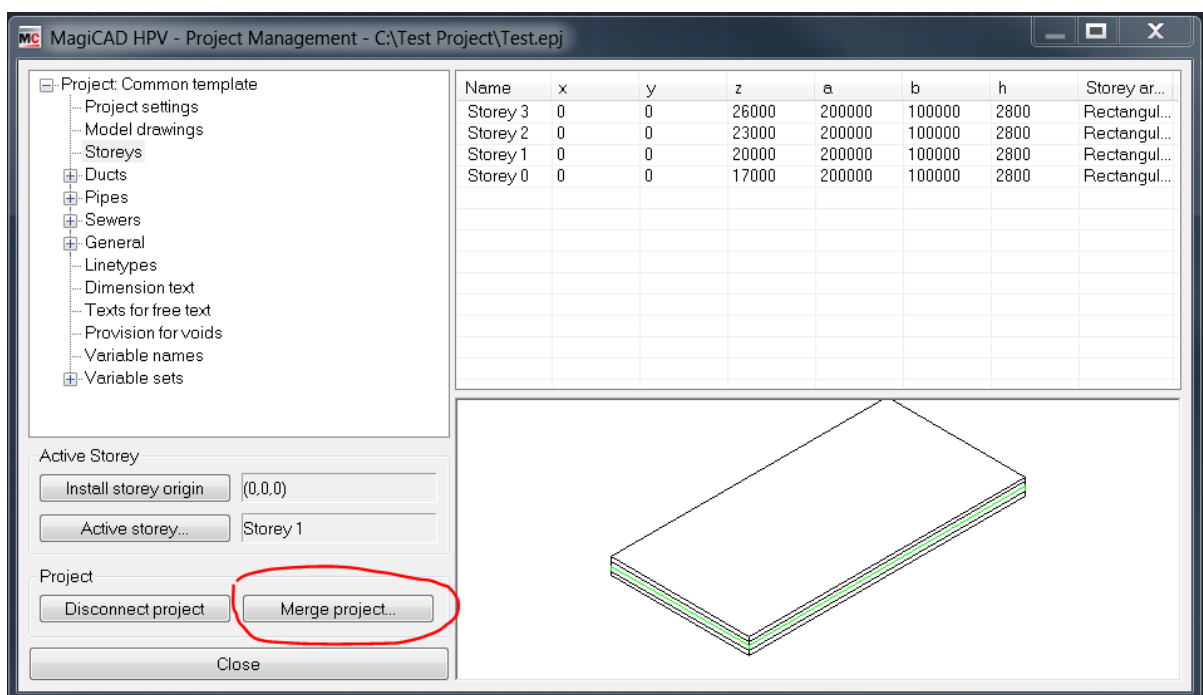
All other product names are trademarks of their respective holders.



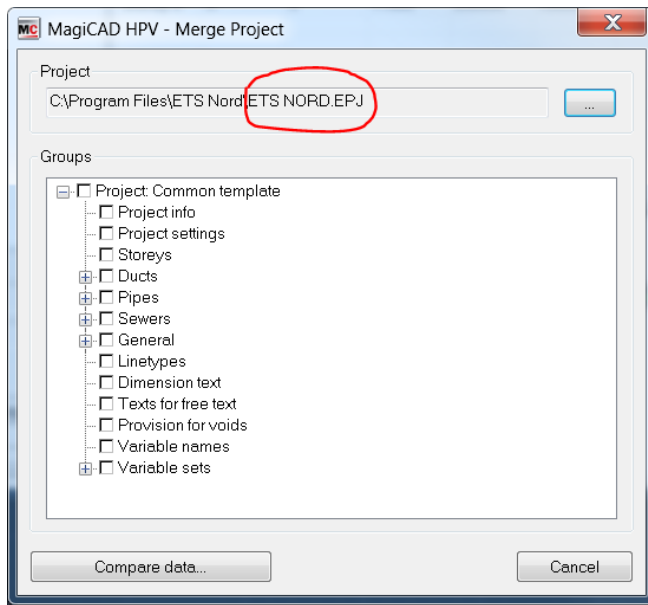
ETS NORD template

Taking the template into use

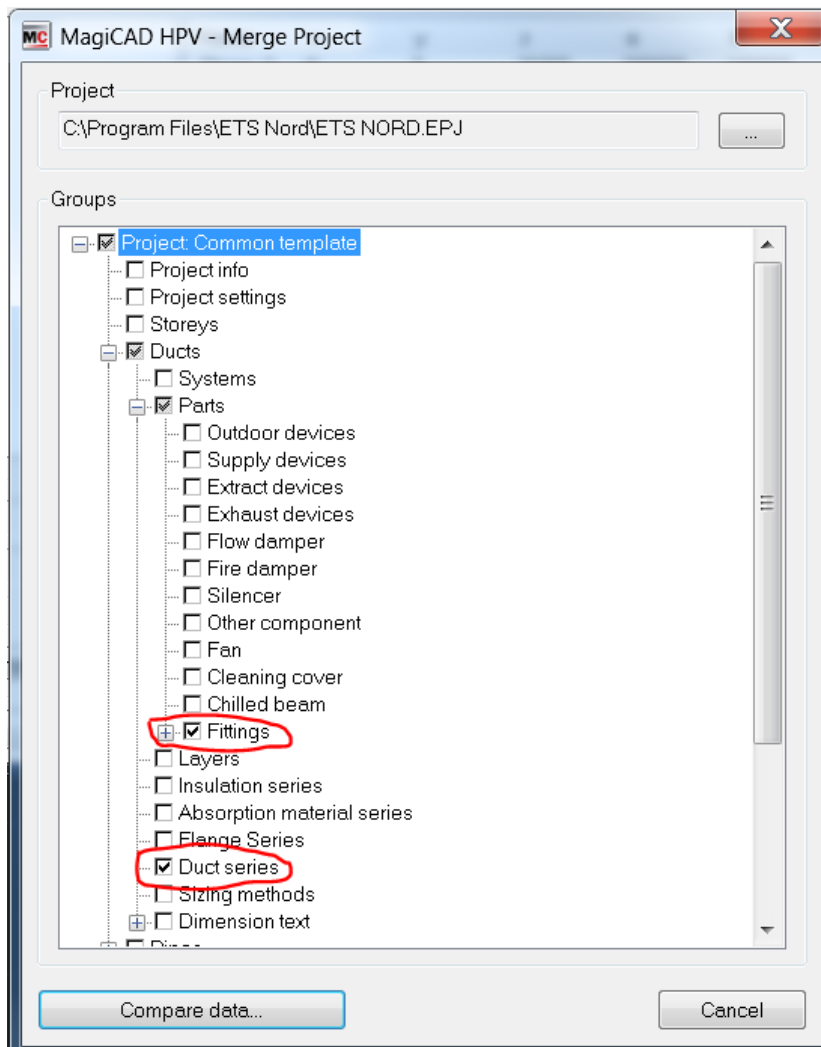
1. Download the .zip file to your computer. Unzip the file to a suitable location.
2. Start MagiCAD, open the project management window, and click “Merge project” button.



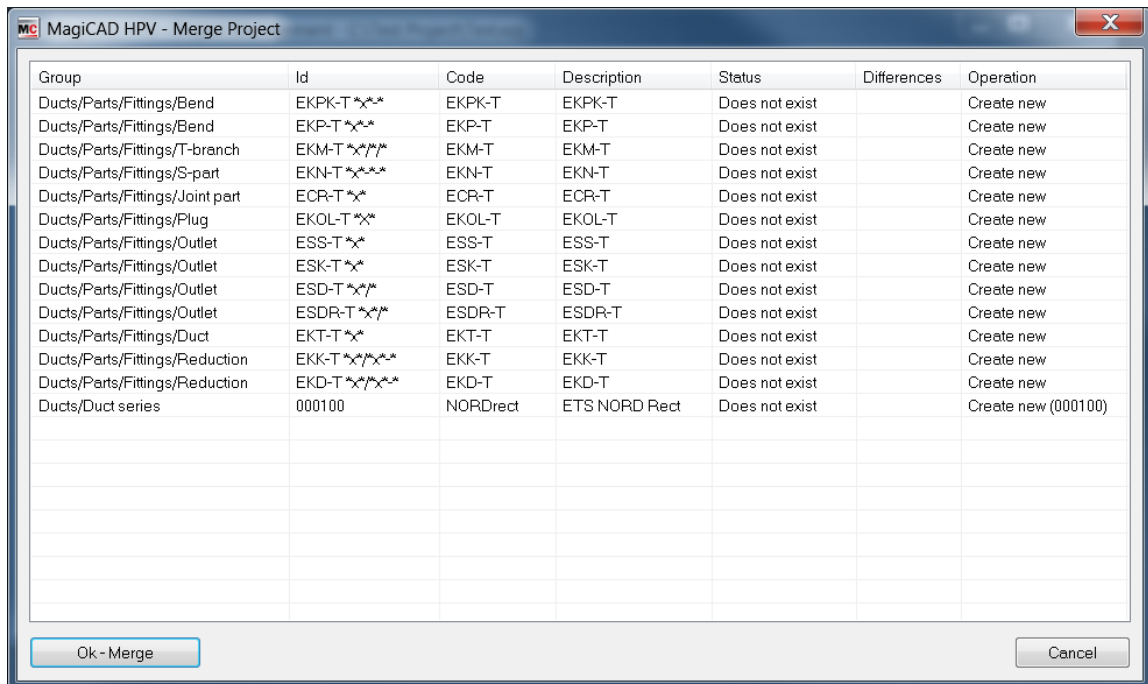
3. Change the source project file to ETS NORD.EPJ.



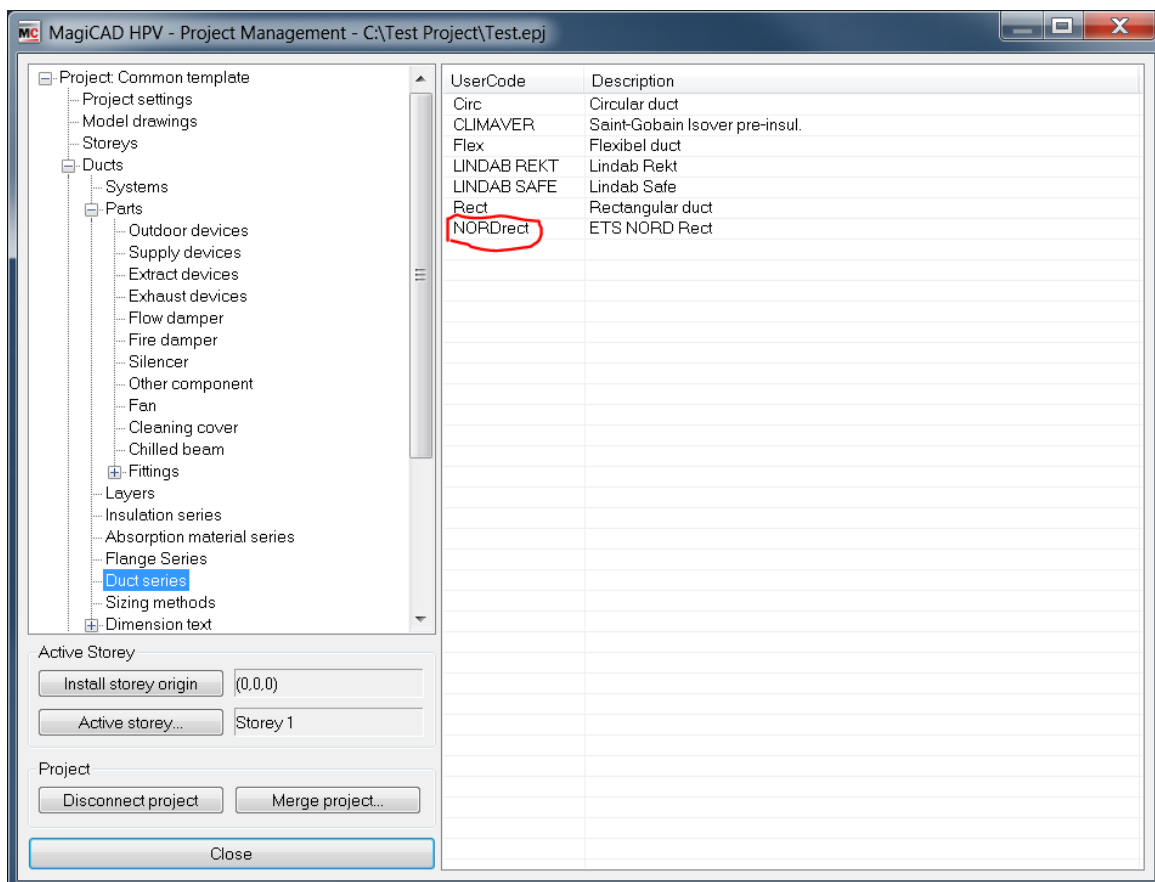
4. Check duct "Fittings" and "Duct series". Then click "Compare data" button.

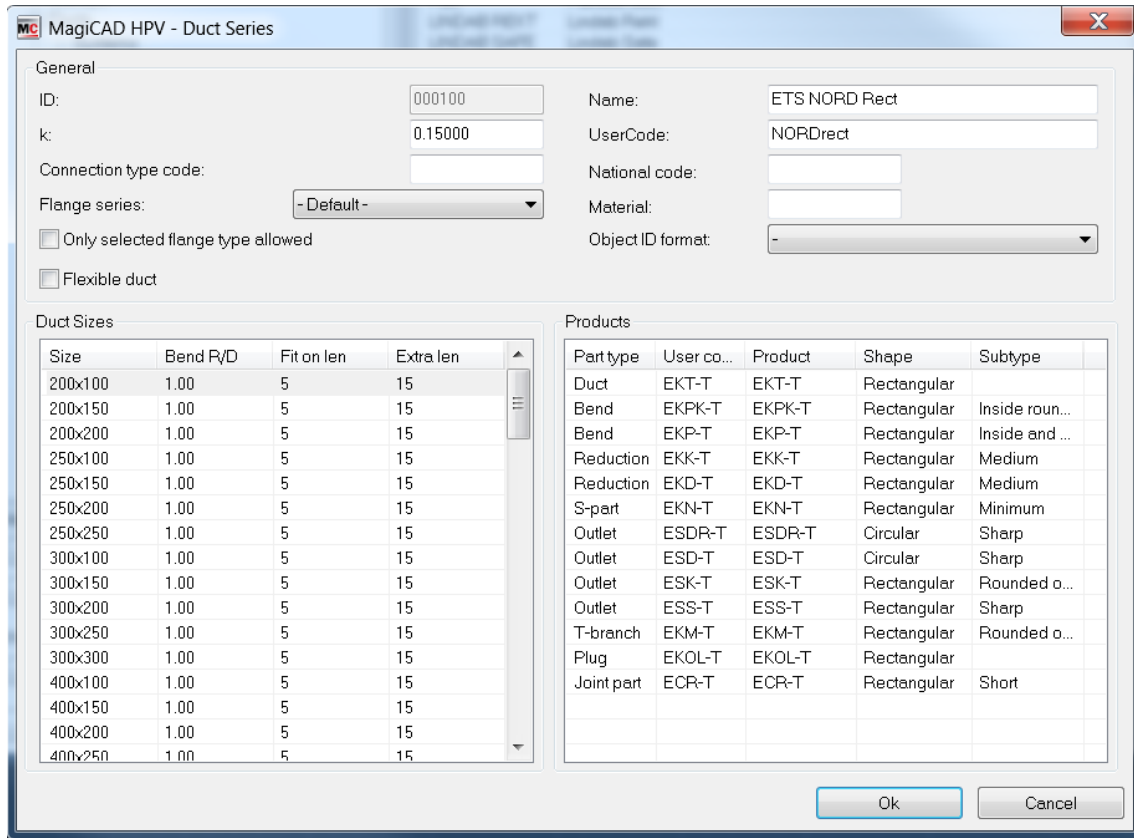


- The Merge Project window is opened. Click “Ok – Merge” button.



- Check in Project Management window, duct series “NORDrect” is imported. Double click “NORDrect”, you will get more information.





7. Drawing duct with "NORDrect" series. Select "NORDrect" from pull down menu of Duct Series. And check "Automatically select products (while drawing)" and "Show warning if product not found". Then, you draw the duct.

