
User's Guide

Fläkt Woods Revit Plugin
-
**Installation Instructions
and User Guide**

PROGMAN OY
www.progman.fi

Contents

About this document.....	2
Installing the software	3
Required MagiCAD version.....	3
Installation.....	3
Starting the program	4
Inserting Fläkt Woods products from ExSelAir	5
Inserting Fläkt Woods products from Acon	8

About this document

The purpose of Fläkt Woods Revit plugin is to use ExSelAir or Acon directly from MagiCAD for Revit or Revit as a product configurator when adding Fläkt Woods products into project.

Fläkt Woods Revit Plugin calls Fläkt Woods selection software (ExSelAir / Acon) with input parameters to calculate the device, transfer device geometry, technical data and calculation results from ExSelAir/Acon into Revit.

Installing the software

Required MagiCAD version

Revit

- 2014, 2015, 2016

MagiCAD (optional)

- MagiCAD 2013.4 or newer (with Revit MEP 2014)
- MagiCAD 2014.11 or newer (with Revit MEP 2015)
- MagiCAD 2015.4.1 or newer (with Revit MEP 2015-2016)

Installation

1. Ensure that you have required Revit version installed on your computer
2. Install Fläkt Woods Revit plugin. Installation packages can be downloaded from

<https://portal.magicad.com/download/ProductSearch?searchStr=Fläkt&categoryId=3>

The 32-bit version of the program is installed by running the installation program

Fläkt Woods Revit plugin 2015.10.1 32-bit.msi

The 64-bit version of the program is installed by running the installation program

Fläkt Woods Revit plugin 2015.10.1 64-bit.msi

Administrator privileges are recommended for installation.

Information for network administrators:

Plugin requires connection to Fläktwoods web site. Internet Explorer control is used to browse web pages from <http://exselair.flaktwoods.com/ClickOnce/Fle.ExSelAir.Client.application>. Standard HTTP GET (TCP, default port 80 should be used) method is used to retrieve files from the server. GET response includes file (mime application/octet-stream). Your network firewall should allow such connections.

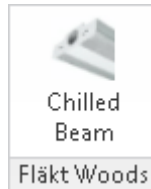
Starting the program

After running the installation, Fläkt Woods panel appears in Revit *Add-Ins* –ribbon tab and user can select which type of product to export

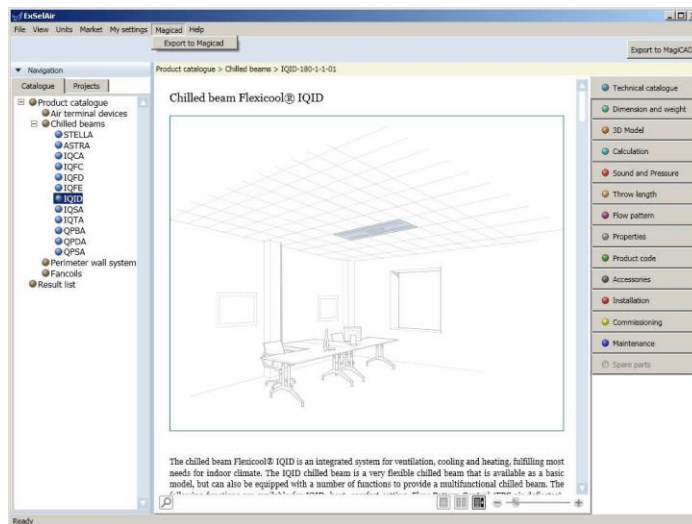


Inserting Fläkt Woods products from ExSelAir

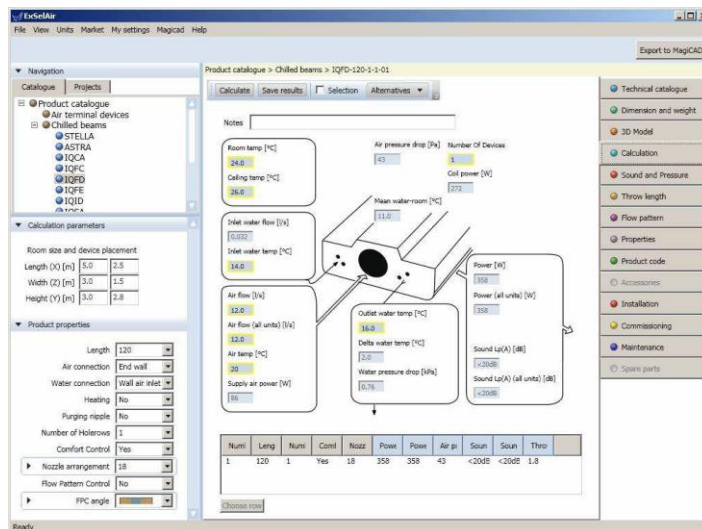
In order to add Fläkt Woods beam, click Revit *Add-Ins* –ribbon tab and *Chilled beam* –button in Fläkt Woods panel and ExSelAir –program will open



1. After ExSelAir has started, the right beam can be selected from the product tree on the left.

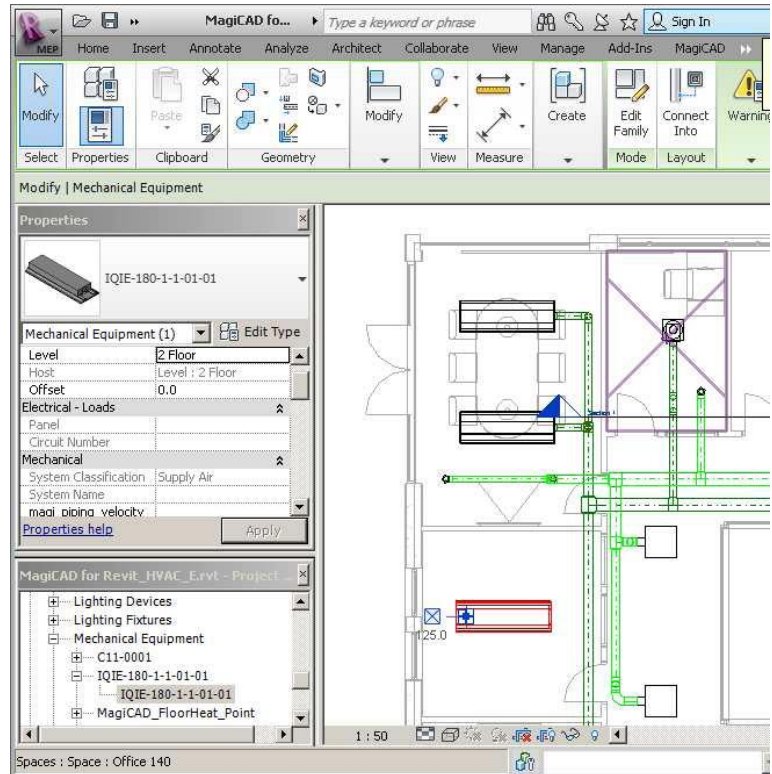


2. The appropriate product variant should be configured on ExSelAir Calculation –page.



3. Export to MagiCAD -button is enabled if product is possible to transfer to MagiCAD

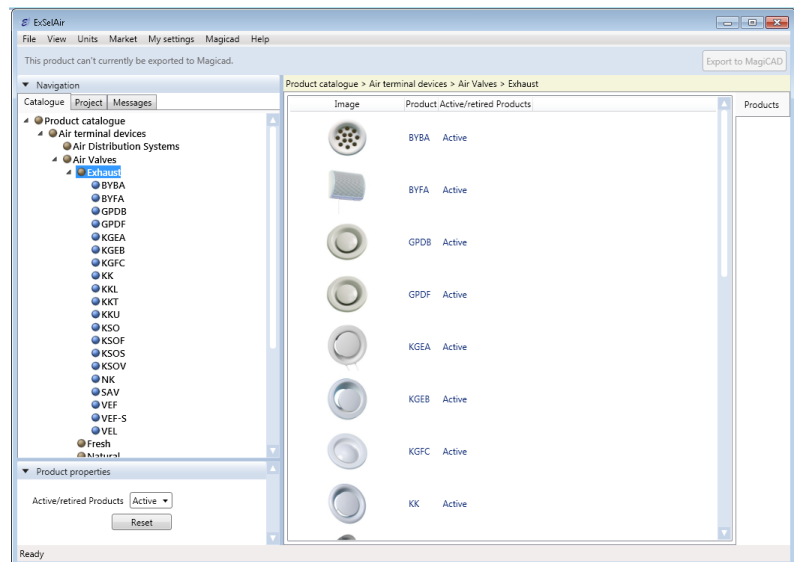
4. Product is now exported to MagiCAD for Revit / Revit and user can continue working with MagiCAD / Revit. E.g. connect it to duct system and view product properties.



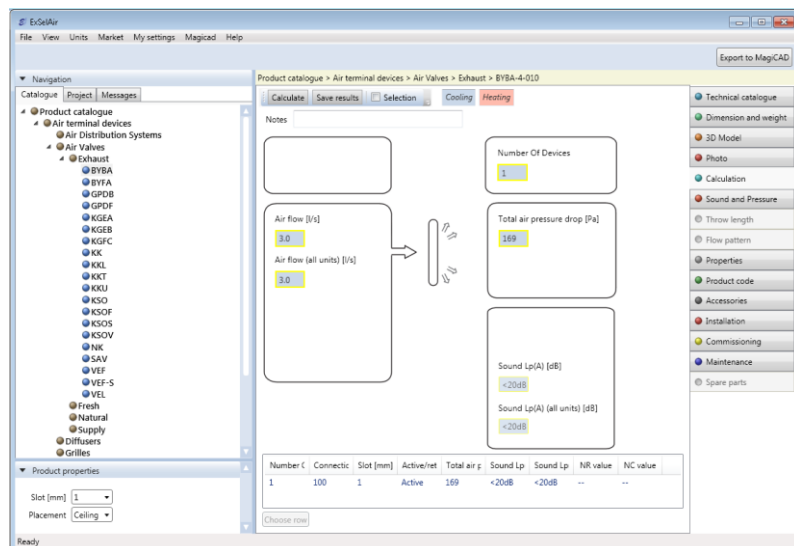
In order to add Fläkt Woods air terminal device, click Revit *Add-Ins* – ribbon tab and *Air Terminal Device* –button in Fläkt Woods panel and ExSelAir –program will open



1. After ExSelAir has started, the right air terminal device can be selected from the product tree on the left.

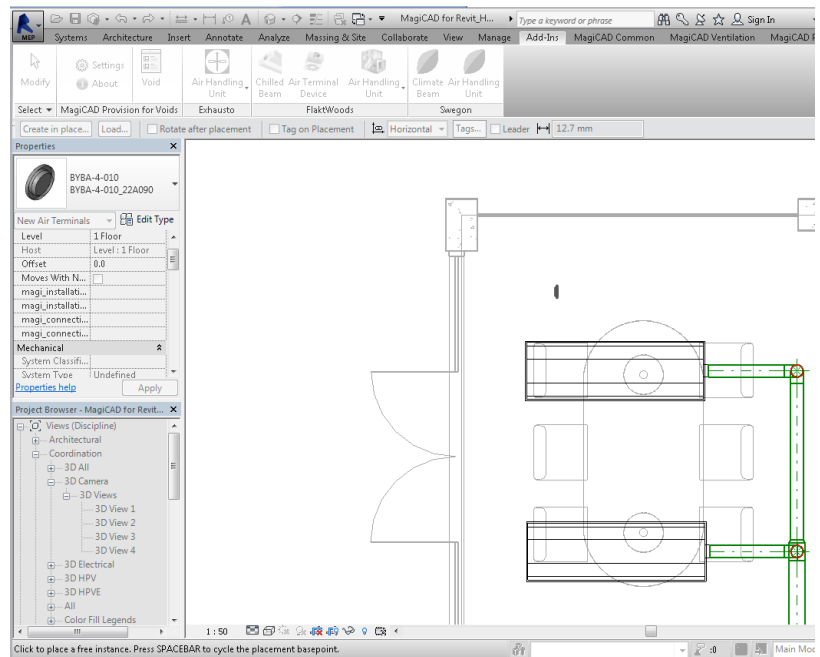


2. The appropriate product variant should be configured on ExSelAir Calculation –page.



3. Export to MagiCAD -button is enabled if it is possible to transfer the product to MagiCAD.

- Product is now exported to MagiCAD for Revit / Revit and user can continue working with MagiCAD / Revit. E.g. connect it to duct system and view product properties.

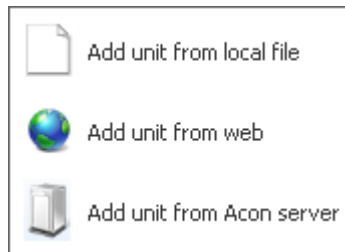


Inserting Fläkt Woods products from Acon

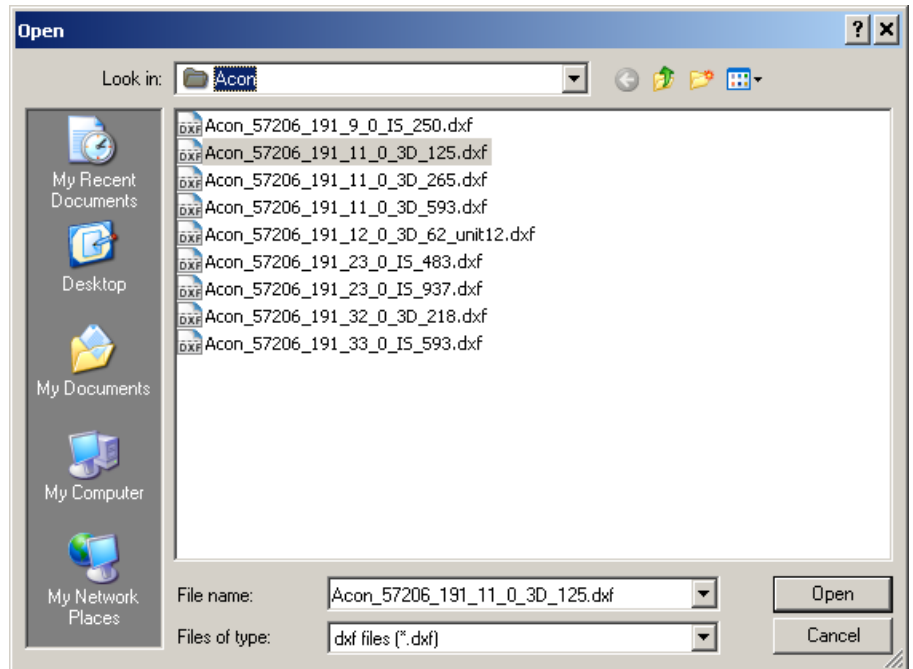
In order to add Fläkt Woods air handling unit, click Revit *Add-Ins* – ribbon tab and *Air Handling Unit* –button in Fläkt Woods panel.



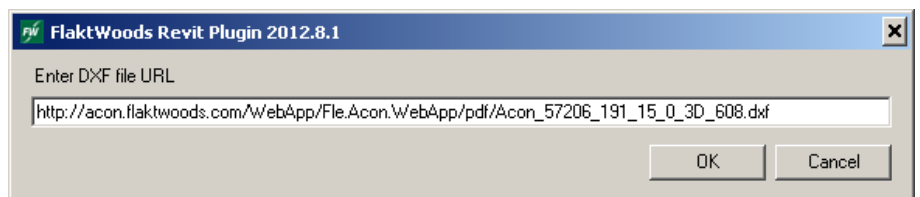
- Select how you want to import unit to Revit from options.



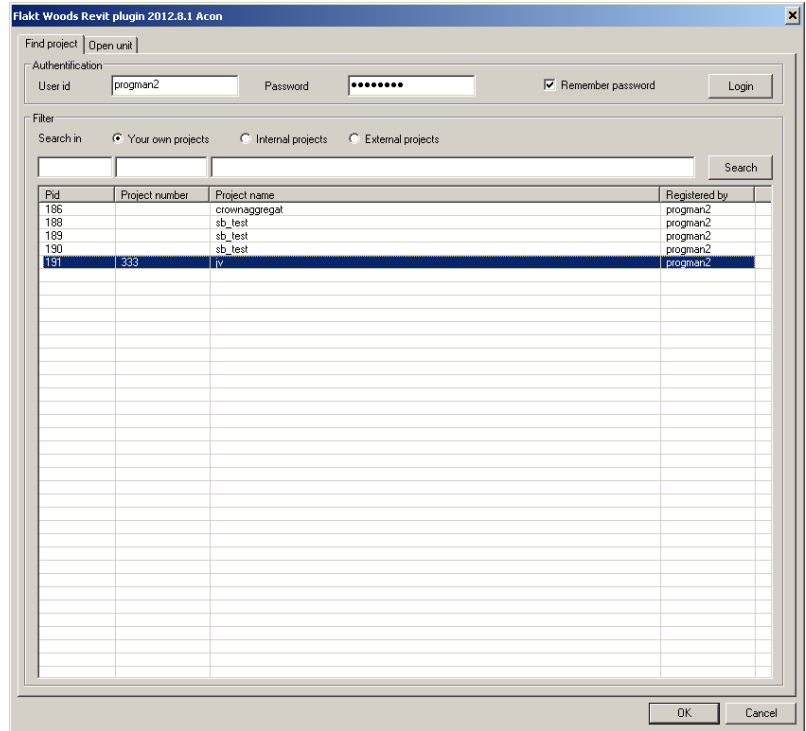
- b. Add unit from local file. Select unit's dxf-file provided by Acon. Unit must be saved with 3D - option, otherwise Revit cannot read the file.



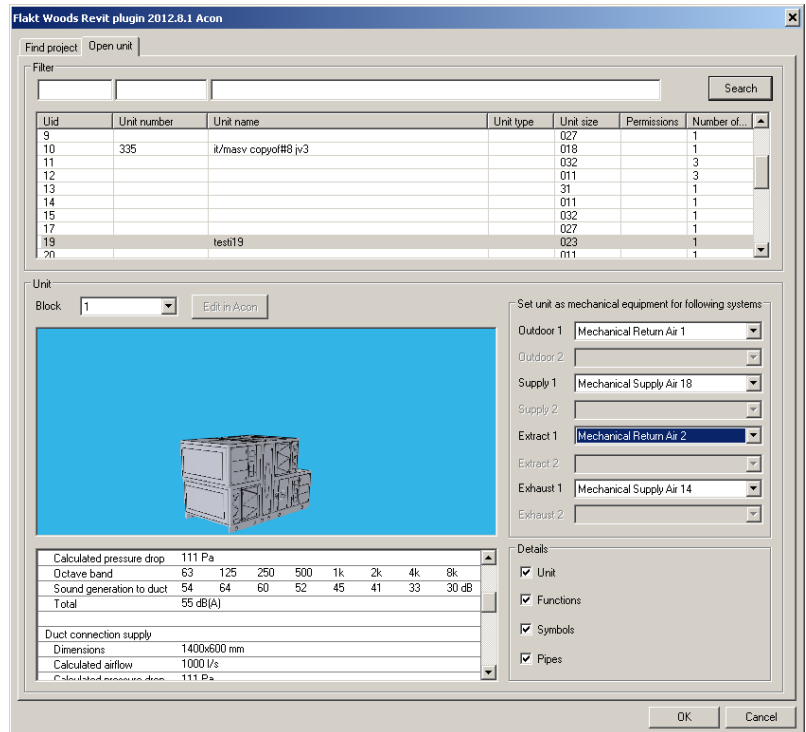
- c. Add unit from web. You need the URL-address of the unit to get



- d. Add unit from Acon server. Input user id and password which are same than in Acon Air Handling Unit program and login. Select then project.



- e. Unit can be selected from the list. If AHU has also duct component, those can be selected in Block-combo.



- f. After selections, click Ok and insert Ahu to Revit. Product is now exported to MagiCAD for Revit / Revit and user can continue working with MagiCAD / Revit. E.g. connect it to duct system and view product properties.