

---

User's Guide

**MagiCAD<sup>®</sup>**

# **MagiCAD for Revit Installation Guide**

**Program version 2015.11 SR-1  
Document revision 01**

**MagiCAD® Copyright © 1998-2016 Progman Oy. All rights reserved.**

MagiCAD is a registered trademark of Progman Oy.

AutoCAD and Revit are registered trademarks of Autodesk Inc.

Windows is a registered trademark of Microsoft Corporation.

All other product names are trademarks of their respective holders.

[www.magicad.com](http://www.magicad.com)

# Contents

<b>General</b>	<b>4</b>
System requirements.....	4
<b>Installing MagiCAD on a single workstation</b>	<b>5</b>
Setup architecture.....	5
Licensing.....	10
Program directory structure .....	11
Location of files that can be modified at runtime.....	11
Starting the program.....	12
<b>Checking for updates</b>	<b>13</b>
<b>Installing MagiCAD on multiple workstations</b>	<b>14</b>
Utilizing MSI properties.....	14
Sample installation batch files .....	15

# General

## System requirements

MagiCAD for Revit version 2015.11 SR-1 runs on

- 64-bit version of Autodesk Revit MEP 2015
- 64-bit version of Autodesk Revit MEP 2016
- 64-bit versions of Autodesk Building Design Suite Premium or Ultimate 2015
- 64-bit versions of Autodesk Building Design Suite Premium or Ultimate 2016

# Installing MagiCAD on a single workstation

## Setup architecture

This chapter describes MagiCAD installation on a single workstation. In larger corporate networks also silent installations may be performed; in that case, see chapter [“Installing MagiCAD on multiple workstations”](#) and contact MagiCAD technical support if necessary.

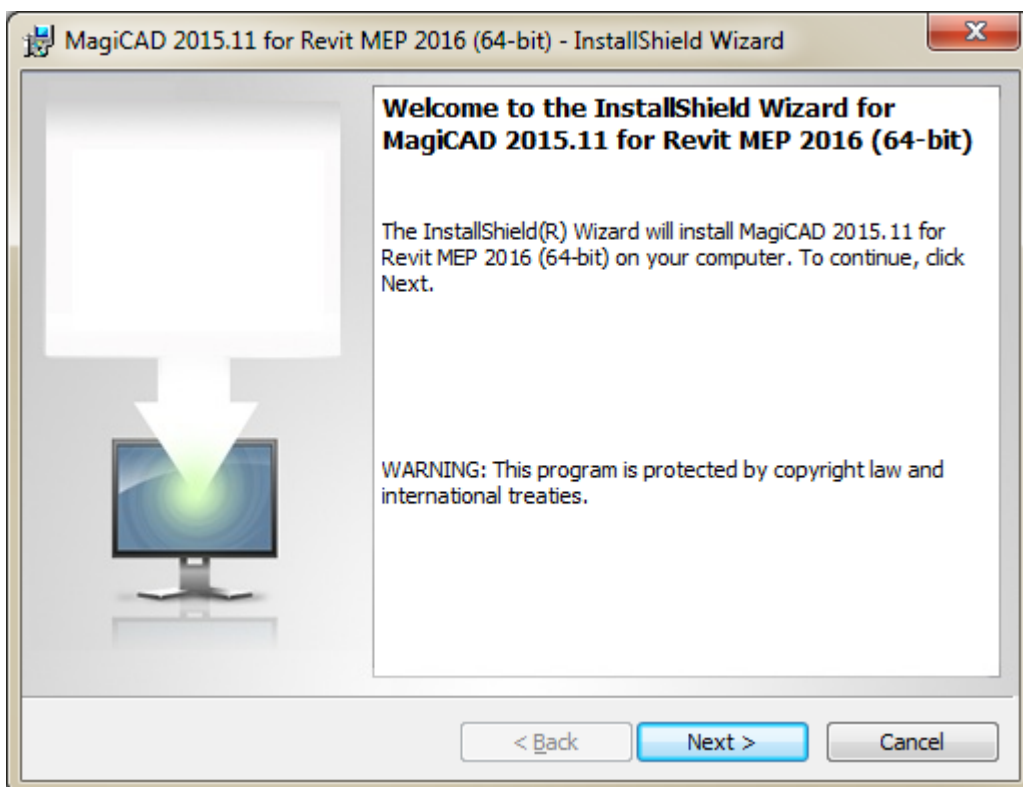
---

Administrator privileges are required when running MagiCAD Setup.

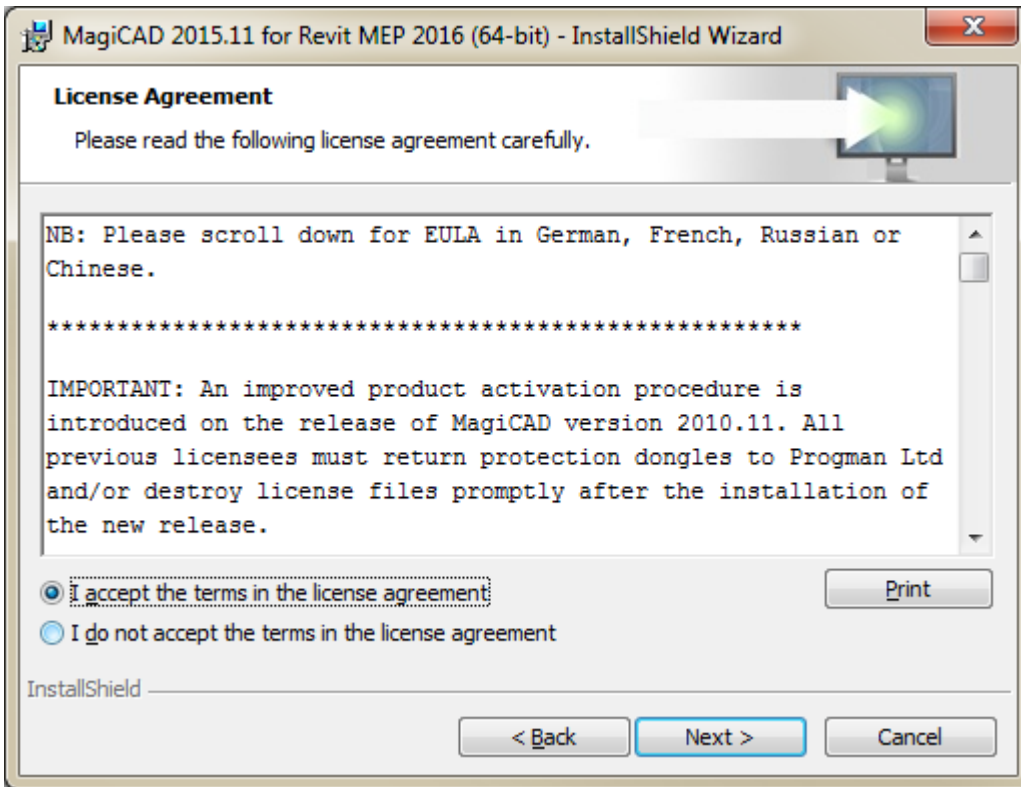
---

The installer contains the following applications:

- MagiCAD for Revit
- License Management Utility
- Check for Updates
- MagiCAD Product Modeller (optional)
- Provision for Voids Manager (optional)

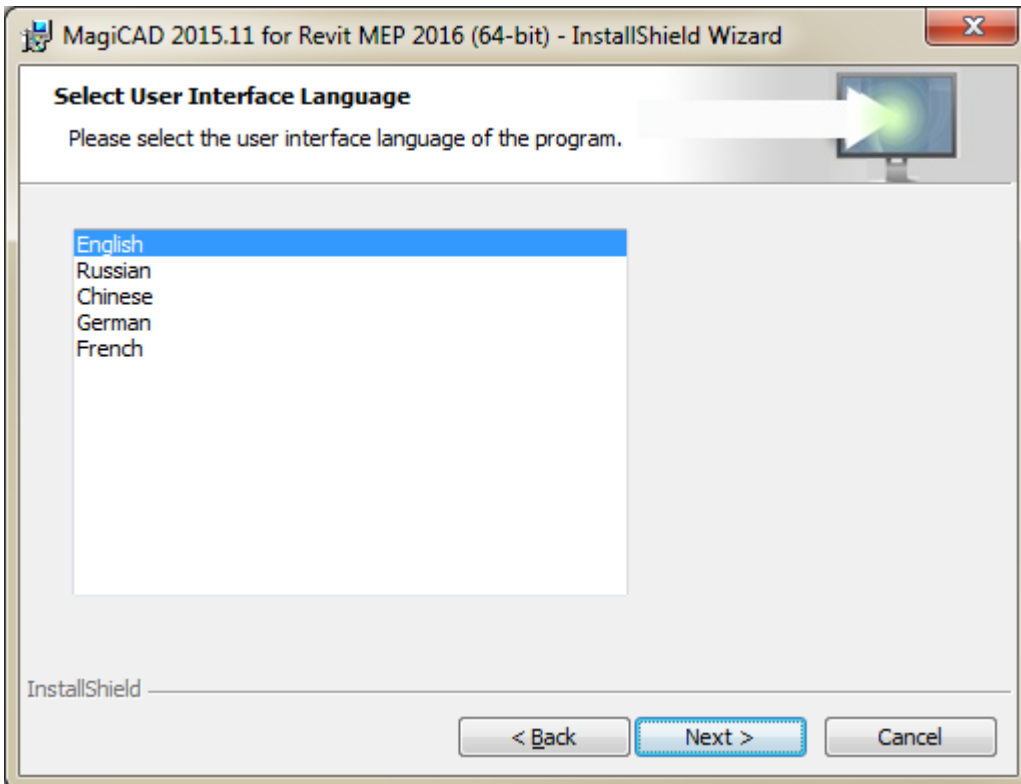


Click *Next*.

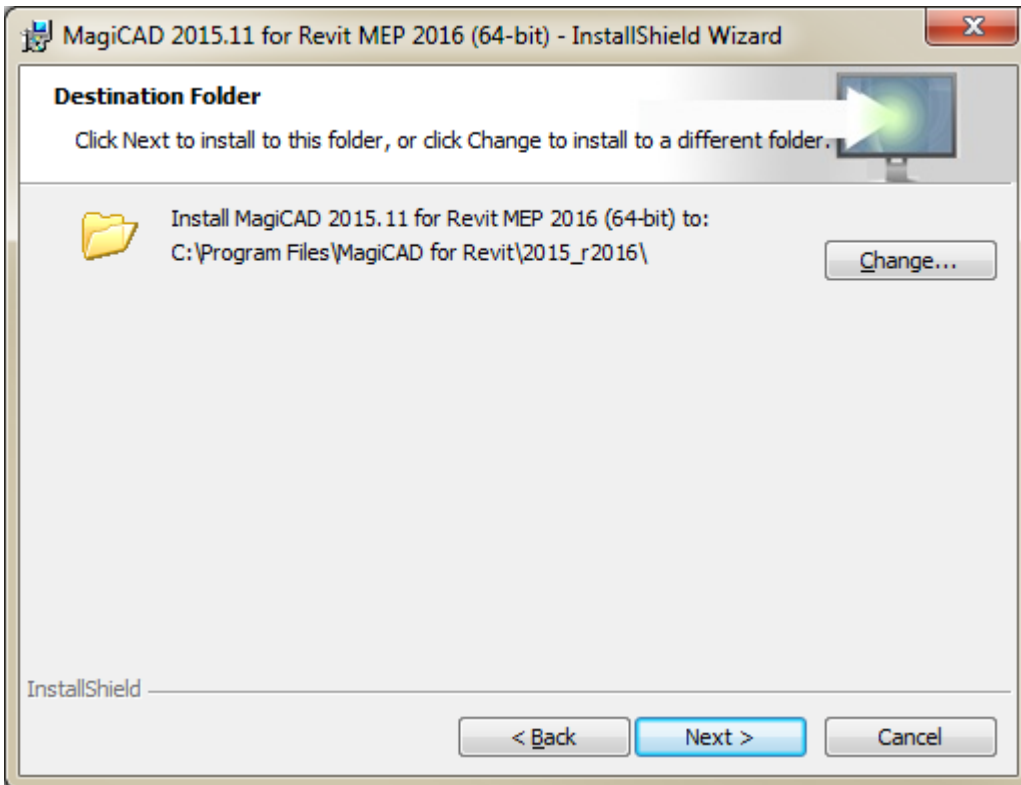


To proceed accept the terms in the license agreement

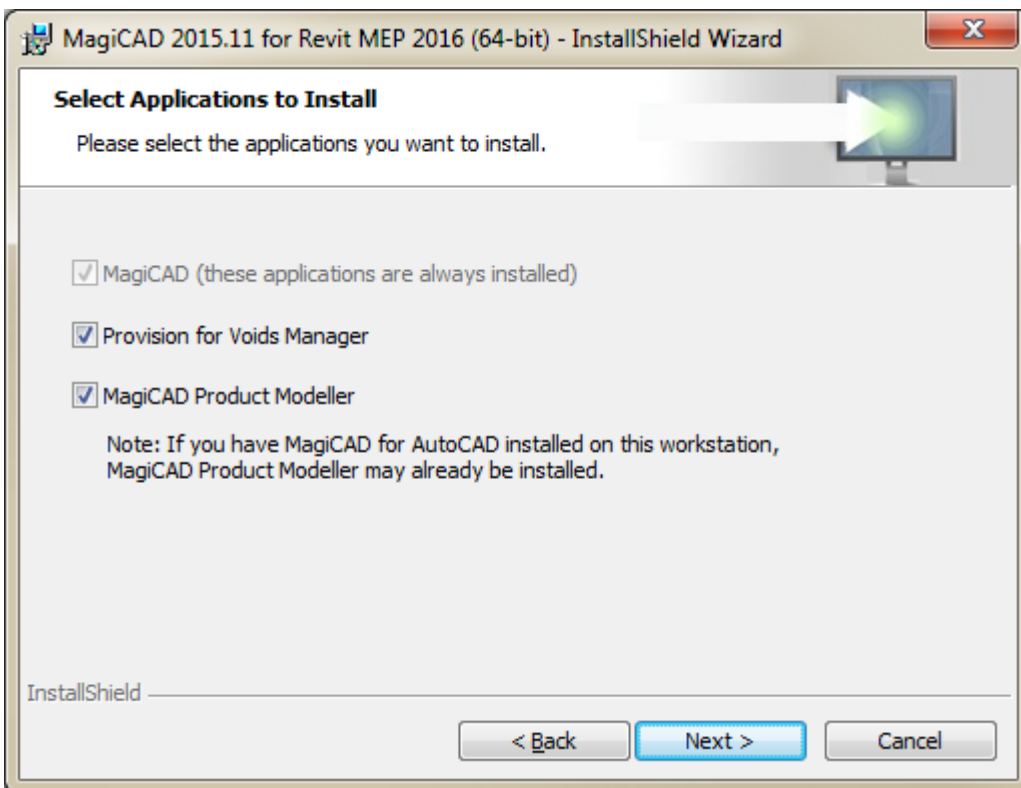
Select **user interface language**.



Select the **destination folder**. If you would like to change the default folder, click *Change* and select the new folder. Click *Next*.

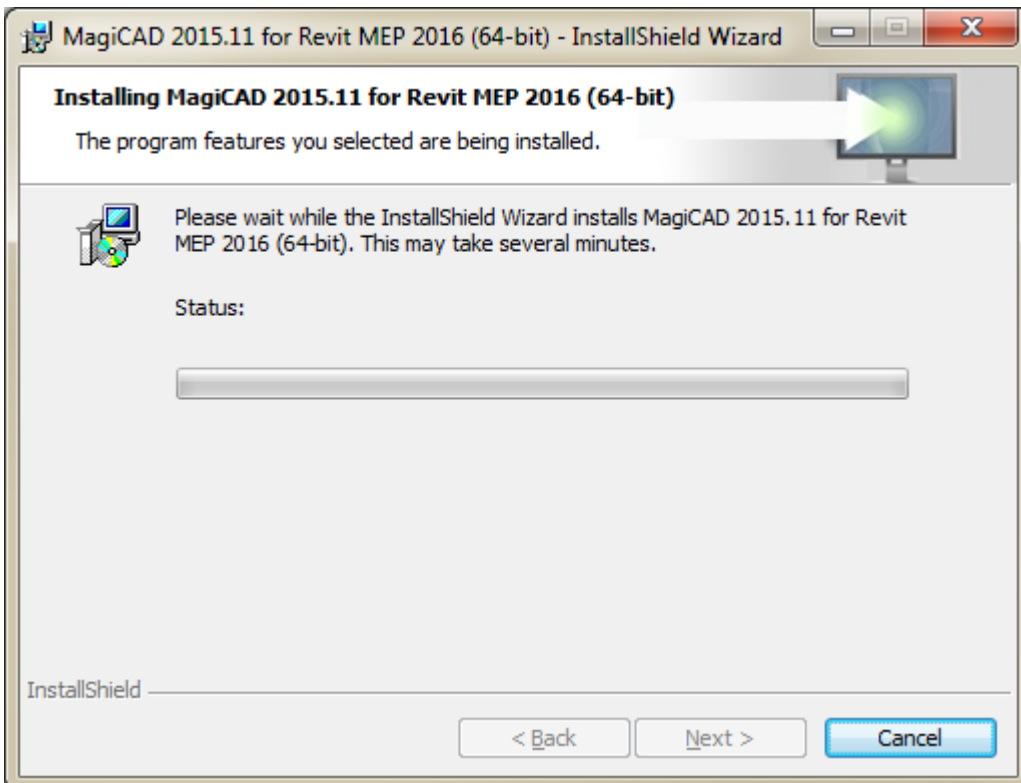
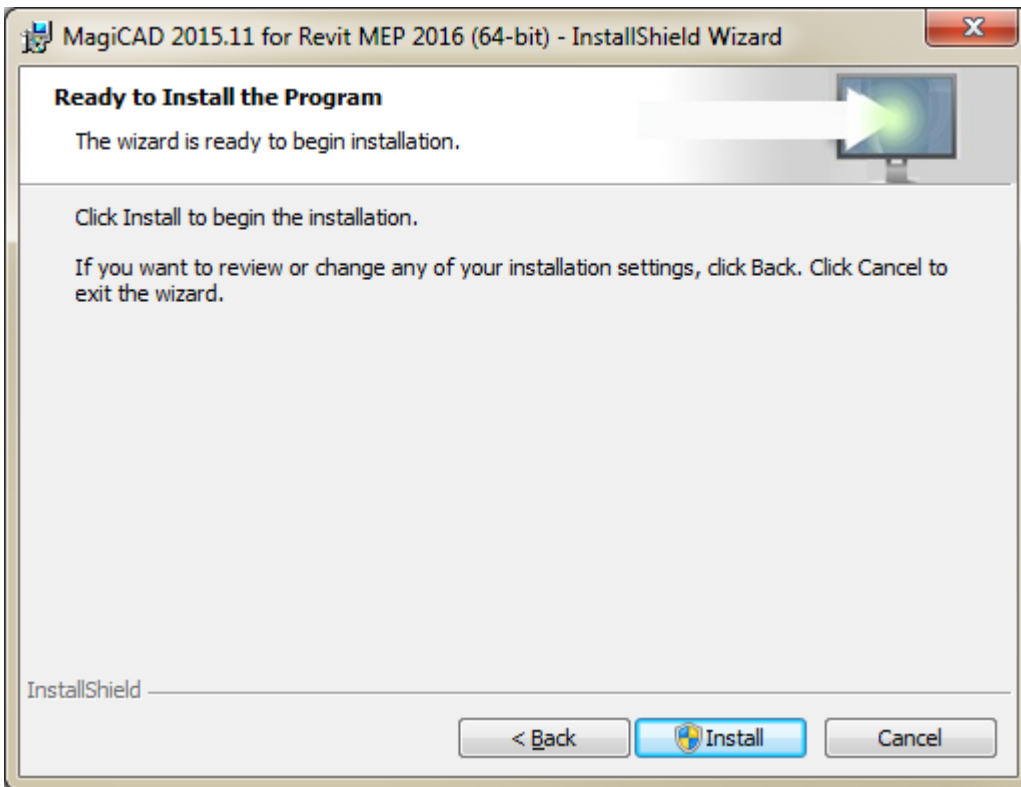


Select the applications to install. If you have MagiCAD for AutoCAD installed, it is not necessary to install MagiCAD Product Modeller with this setup. After selections, click *Next*.



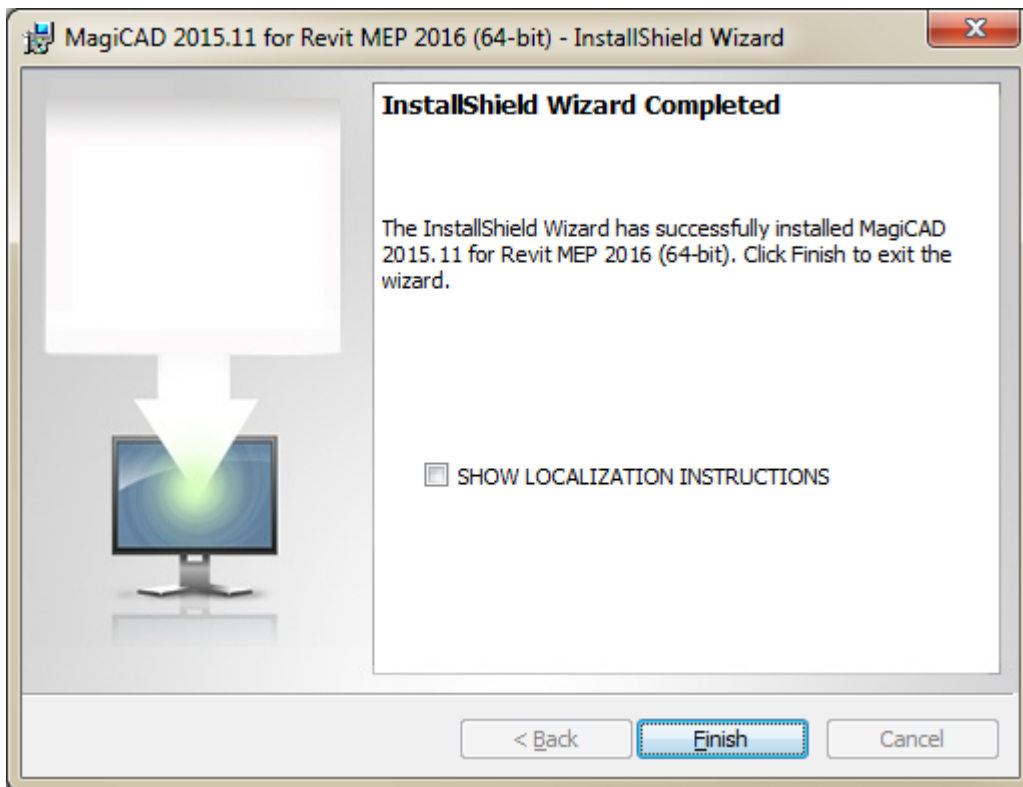
Please note that if you do not install a utility (e.g. MagiCAD Product Modeller) but you want to use it later, you will need to uninstall MagiCAD and install it again with the preferred options.

Click *Install* to continue. Setup then starts copying the files and making the necessary settings.






When MagiCAD is installed, the setup continues with the installation of other applications.





Click *Finish* to complete the setup.

When the setup is complete, **check that the program license is available**. Follow the instructions of license usage and activation in the next chapter (“Licensing”).

-  MagiCAD for Revit - Documentation
-  Tools
-  MagiCAD for Revit - Demo Project

*Contents of “MagiCAD” folder on the desktop.*

# Licensing

MagiCAD can be used with two types of licenses:

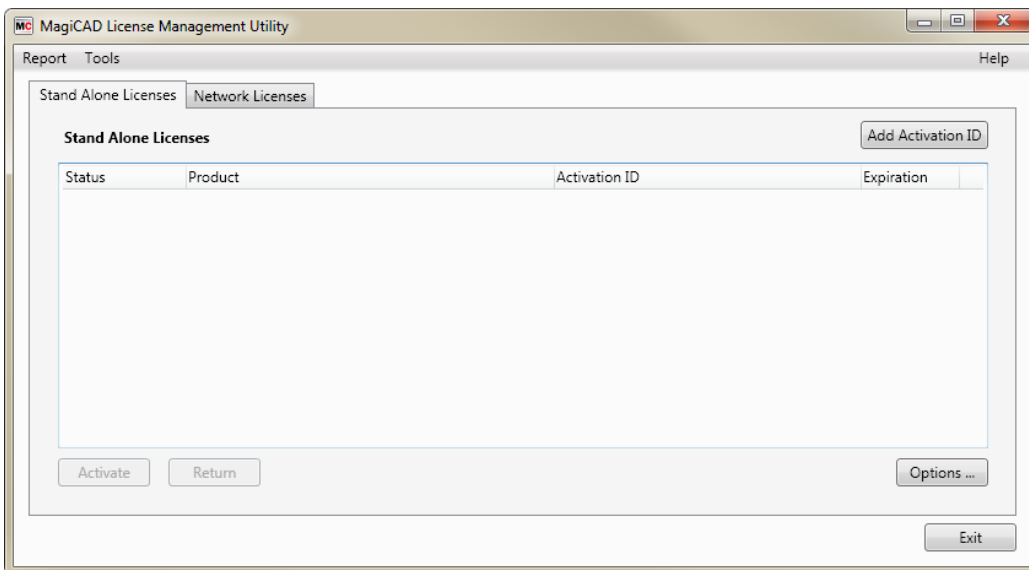
**Stand-alone licenses**, which are activated to the workstation. Internet connection is required when the licenses are activated, but the program can be used while disconnected from the network if the licenses are activated.

**Network licenses**, which are stored on a network server.

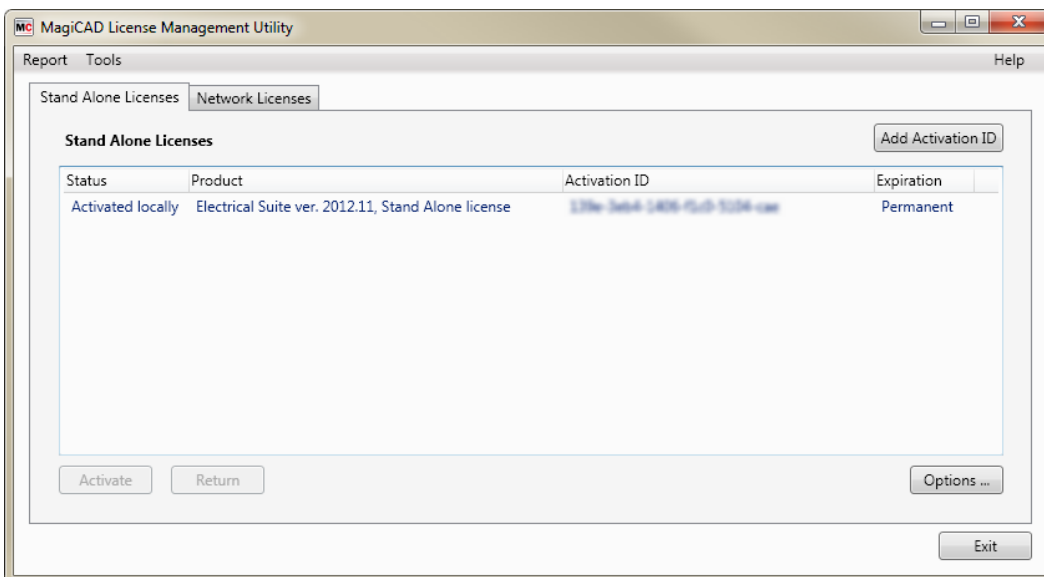
If your company's IT administrator has enabled license borrowing, you can borrow the application licenses to be used while disconnected from the network.

Setting up a network license server is described in a separate document.

Both license types are managed with the license management utility. The utilities shortcut can be found on the "**MagiCAD >> Tools**" desktop folder.



**If you have an earlier version of a MagiCAD license (2015.4 or older) activated on your computer, you need to return the old license before you can activate the new license.**



Select the product and click the *Return* button.

## Program directory structure

The program executables are mainly installed to the directory that is selected in the setup program.

### Location of files that can be modified at runtime

---

By default, the location of the user-modifiable files is in the “local application folder”. It is, however, possible to affect the search path of these files when the software is installed as silent setup (see chapter “[Utilizing MSI properties](#)”).

---

In Windows 10, Windows 8 and Windows 7 the default location is either of the following, depending on Revit platform:

C:\ProgramData\MagiCAD-RS\2015\_r2015

C:\ProgramData\MagiCAD-RS\2015\_r2016

Subdirectory	Contents
Documentation	User’s Guide and “Read me first”
Mrv	Datasets
Annotations	Text tags
Templates	Templates for MagiCAD for Revit

---

Please do not modify the contents of other subdirectories, nor file `magiParameters.txt`.

---

## Starting the program

The program will load automatically when you start Revit. The default template to be used with MagiCAD for Revit will also be loaded automatically.

The "MagiCAD for Revit" folder does not include a shortcut icon for starting the program. Start Revit normally from its shortcut.

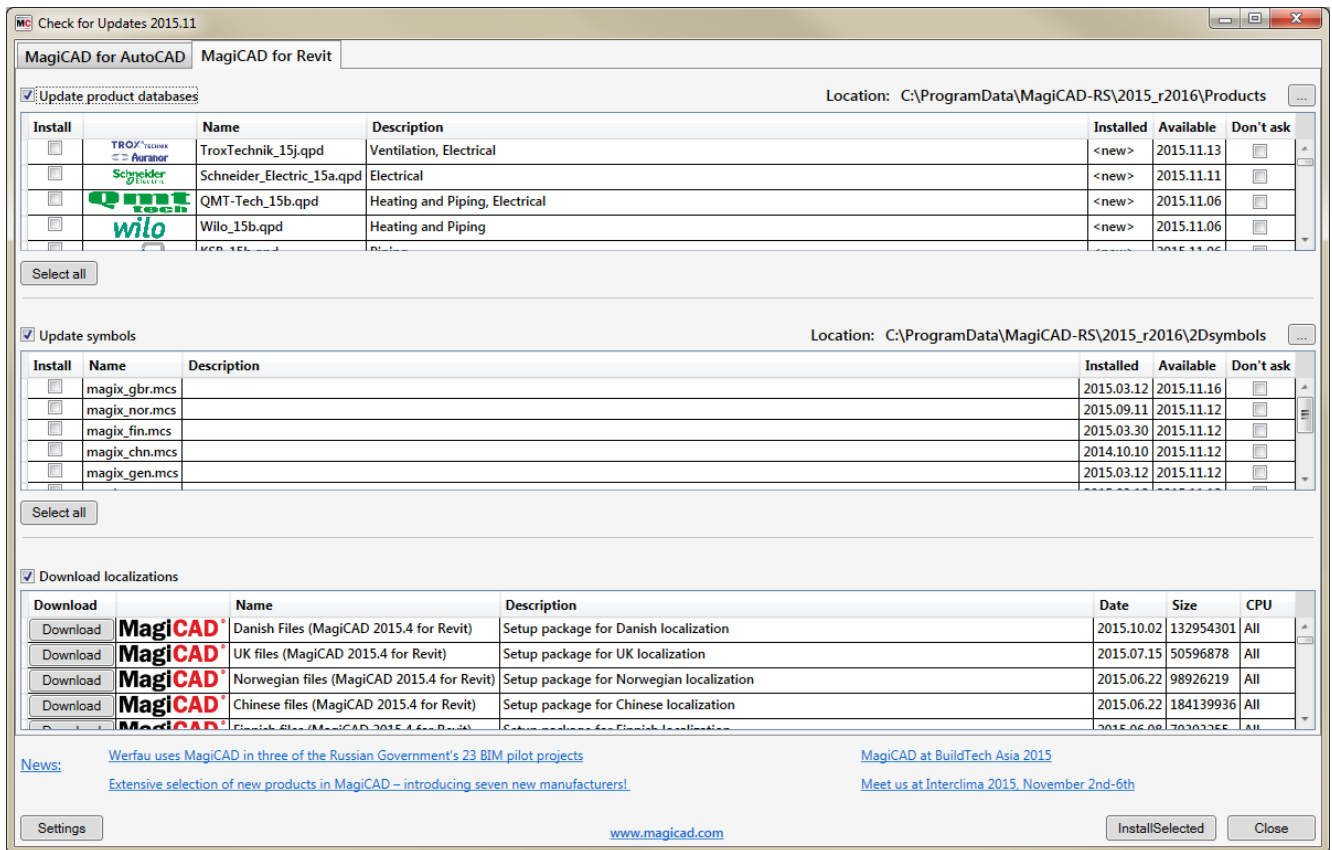
MagiCAD commands are found under "MagiCAD Common", "MagiCAD Ventilation", "MagiCAD Piping", and "MagiCAD Electrical" ribbon tabs.

*Provision for Voids Manager* is also loaded (if it is installed) when you start Revit.

# Checking for updates

You need an open internet connection to be able to use this function.

When you click the **Check for Updates** function button in the MagiCAD Common ribbon, a utility displaying the possible updates starts.



# Installing MagiCAD on multiple workstations

## Utilizing MSI properties

MagiCAD setup is carried out with Windows Installer technology. Installation can be customised with the help of certain MSI properties, which reduces the amount of work when a large number of workstations are configured.

The properties can be affected e.g. with scripts or transforms.

If the program is installed with silent setup, it is possible to affect two directory settings. If the MSI property is not specified, default value is used.

Property	Purpose	Default value
INSTALLDIR	The directory where the program executables are installed.	C:\Program Files\MagiCAD for Revit\2015_r2015  Note: this may vary depending on the language of the operating system and the program version
DIR_LOCALDATA	The directory where the user-modifiable files are located	C:\ProgramData\MagiCAD for Revit\2015_r2015  Note: this may vary depending on the language of the operating system and the program version
UI_LANGUAGE	User interface language of the program. 1512=English 1513=German 1515=French 1528=Russian 1539=Chinese	1512
INSTALL_LMU	Install License Management Utility 0=no, 1=yes	1
INSTALL_CFU	Install Check for Updates 0=no, 1=yes	1
INSTALL_POV	Install Provision for Voids Manager 0=no, 1=yes	1
INSTALL_MODELLER	Install MagiCAD Product Modeller 0=no, 1=yes	1
LICENSE_SERVER	Server(s) containing network licenses given as port@host format. Multiple servers are separated with a semicolon.	

---

Note that the `DIR_LOCALDATA` property affects only the search path that is written to the program's registry. The directory specification is provided in case you want the program to search the files from a different directory (e.g. a shared network directory). The setup program still copies the files to the default directory on the workstation.

---

## Sample installation batch files

```
msiexec /i "MagiCAD 2015.11 SR-1 for Revit MEP 2015 (64-bit).msi" /qb  
INSTALLDIR="C:\MC_Revit_201511_r2015" DIR_LOCALDATA="X:\MC_Revit_LocalData"
```

This sample batch installs the 64-bit Revit 2015 compatible version to directory `C:\MC_Revit_201511_r2015` and writes the registry so that the data files are read/written in directory `X:\MC_Revit_LocalData`. The user interface language is English (default language) and the license server is not specified. The batch also installs all external utilities.

```
msiexec /i "MagiCAD 2015.11 SR-1 for Revit MEP 2016 (64-bit).msi" /qb  
UI_LANGUAGE=1539 INSTALL_LMU=0 LICENSE_SERVER="@server1"
```

This sample batch installs the 64-bit Revit 2016 compatible version of MagiCAD, Provision for Voids Manager, Check for Updates and MagiCAD Product Modeller. User interface language is selected to be Chinese, and the program uses network licenses that are located in `server1` (no port number specified). License Management Utility is not installed (the users cannot borrow licenses). Default paths are used.