



Installation Guide

MagiCAD 2016.11 for Revit

Table of Contents

- GENERAL 3**
 - SYSTEM REQUIREMENTS..... 3
 - SETUP ARCHITECTURE..... 3
- INSTALLING MAGICAD ON A SINGLE WORKSTATION 4**
 - LICENSING 8
- PROGRAM DIRECTORY STRUCTURE 9**
 - EXECUTABLE FILES 9
 - LOCATION OF FILES THAT CAN BE MODIFIED AT RUNTIME 9
- STARTING THE PROGRAM 10**
 - MAGICAD PLUGIN MANAGER 10
- CHECKING FOR UPDATES..... 11**
- INSTALLING MAGICAD ON MULTIPLE WORKSTATIONS 12**
 - MSI INSTALLATION PACKAGE..... 12
 - Sample installation batch files*..... 13
 - EXE INSTALLATION PACKAGE..... 13
 - Sample installation batch files for exe package*..... 13
 - Silent installation of patch package*..... 13
- FREQUENTLY ASKED QUESTIONS 14**
 - WHY DOES THE INSTALLER DISPLAY THE WARNING "REVIT IS NOT FOUND"? 14
 - WAS THE PATCH INSTALLED SUCCESSFULLY? I CANNOT FIND IT IN PROGRAMS AND FEATURES 14
 - HOW CAN I UNINSTALL A PATCH? 14

GENERAL

SYSTEM REQUIREMENTS

MagiCAD for Revit version 2016.11 runs on

- 64-bit version of Autodesk Revit MEP 2017
- 64-bit version of Autodesk Revit MEP 2016
- 64-bit versions of Autodesk Building Design Suite Premium or Ultimate 2017
- 64-bit versions of Autodesk Building Design Suite Premium or Ultimate 2016

SETUP ARCHITECTURE

This chapter describes MagiCAD installation on a single workstation. In larger corporate networks also silent installations may be performed; in that case, see chapter “Installing MagiCAD on multiple workstations” and contact MagiCAD technical support if necessary.

Administrator privileges are required when running MagiCAD Setup.

The installer contains the following applications:

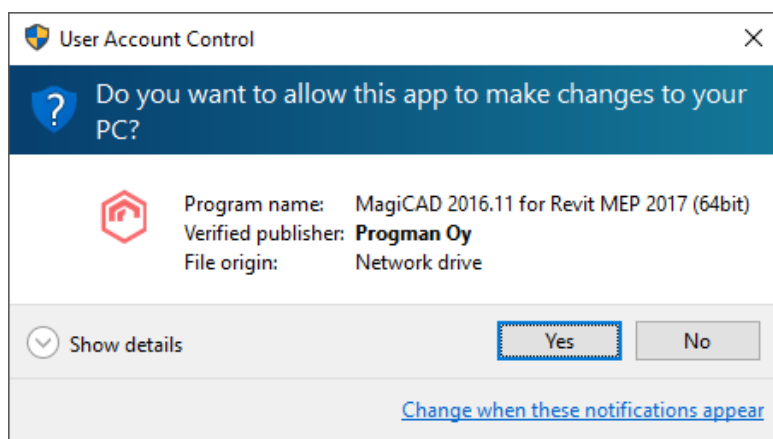
- MagiCAD for Revit
- License Management Utility
- Check for Updates
- MagiCAD Plugin Manager
- Supports & Hangers plug-in

INSTALLING MAGICAD ON A SINGLE WORKSTATION

This chapter describes MagiCAD installation on a single workstation. In larger corporate networks also silent installations may be performed; in that case, see chapter “Installing MagiCAD on multiple workstations” and contact MagiCAD technical support if necessary.

Administrator privileges are required when running MagiCAD Setup.

Run the setup package and follow the instructions.

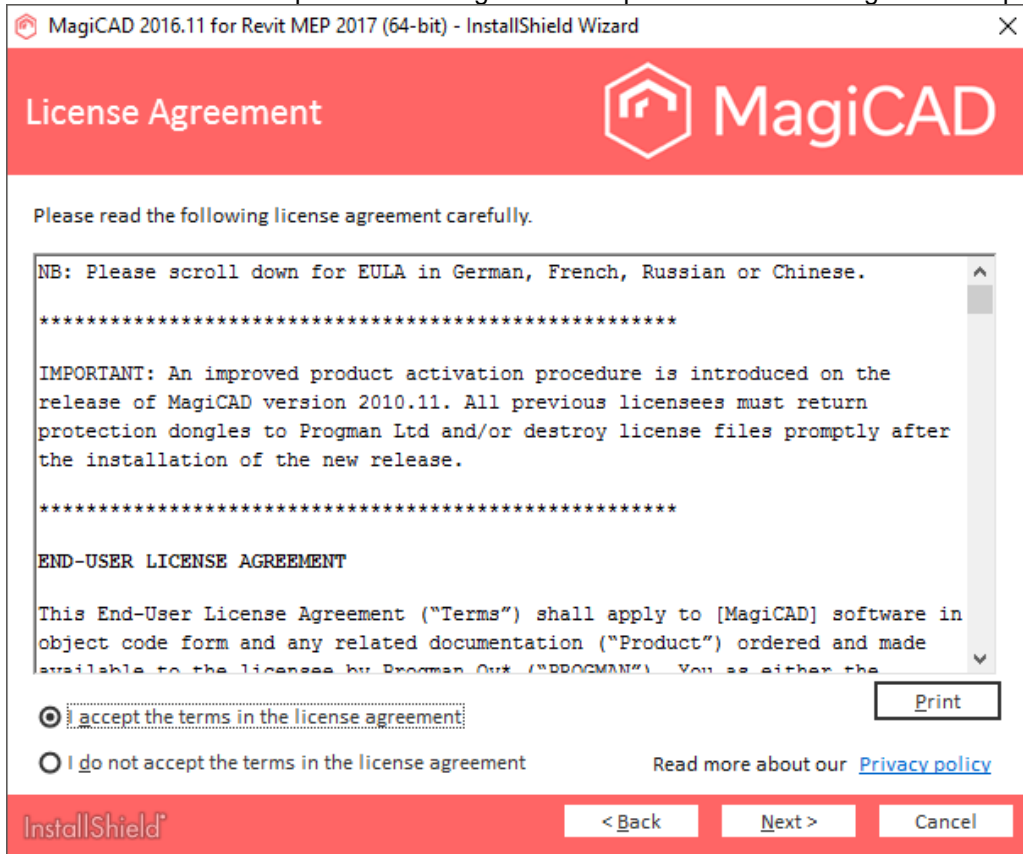


If User Account Control is enabled and the installer is not being run using Administrator rights, the installation requires Administrator permission to continue. If this dialog appears, click Yes.

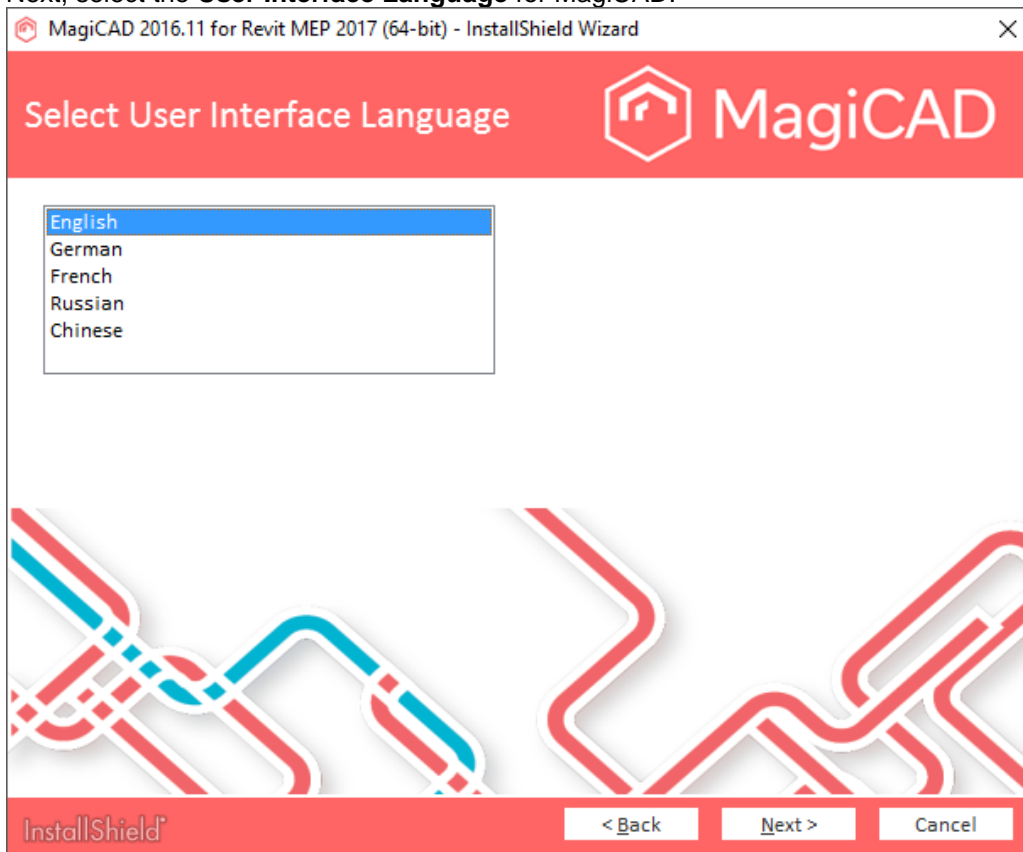


Click **Next**.

You must read and accept the license agreement to proceed with the MagiCAD Setup procedure.



Next, select the **User Interface Language** for MagiCAD.

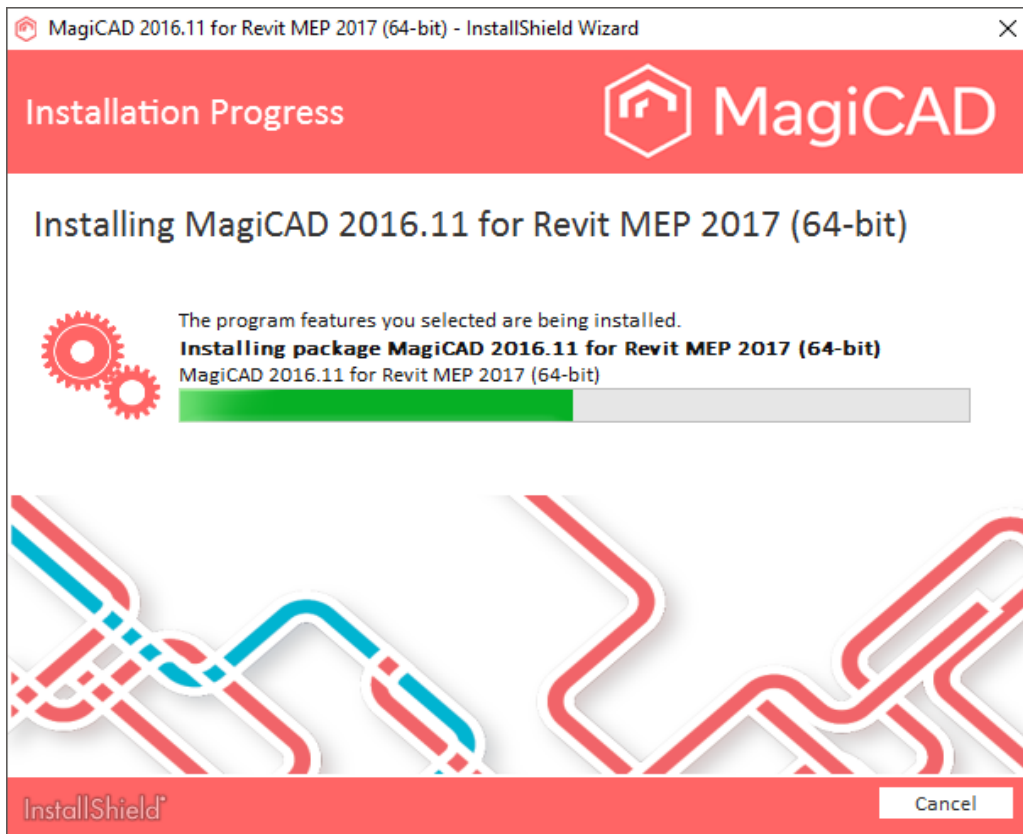


Select the **Destination Folder**. If you want to change the default folder, click **Change** and select a new Destination Folder. Click **Next** to continue.



Click **Install** to continue. The MagiCAD Setup will then begin copying files and defining the necessary settings.





Click **Finish** to complete the setup.

When the MagiCAD Setup procedure has been completed, **check that the program license is available**. Follow the instructions for license usage and activation in the next chapter "Licensing".

LICENSING

MagiCAD can be used with two types of licenses:

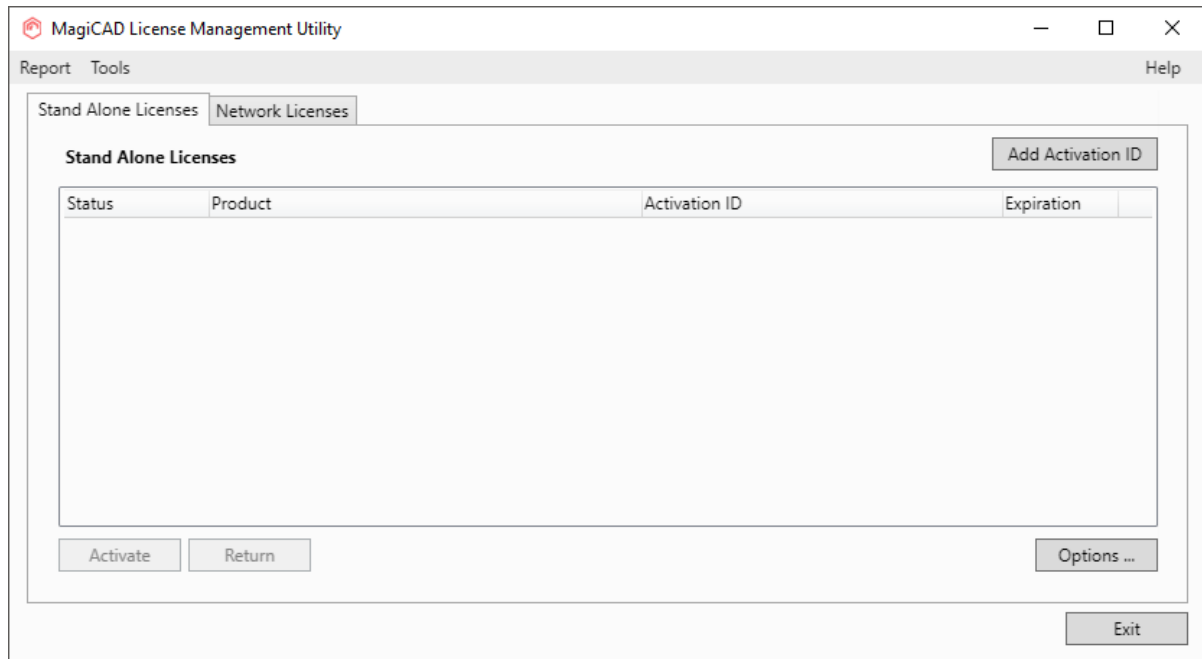
Stand-alone licenses, which are activated for a specific workstation. Internet connection is required when the licenses are activated. However, when the licenses have been activated, the program can be used also when disconnected from the network.

Network licenses, which are stored on a network server.

If your company's IT administrator has enabled license borrowing, you can borrow the application licenses to be used while disconnected from the network.

Setting up a network license server is described in a separate document.

Both license types are managed at the workstation using the license management utility. The shortcut link to the utility can be found in the **MagiCAD\ Tools** desktop folder.



If the version of the MagiCAD license currently activated on your workstation is 2015.11 SR-1 or older, you need to return the old license before you can activate the new license.

Select the product and click the *Return* button.

PROGRAM DIRECTORY STRUCTURE

The program executables are mainly installed to the **Destination Folder** selected during the MagiCAD Setup procedure.

EXECUTABLE FILES

The files of the MagiCAD Supports & Hangers application are installed under one of the following directories, depending on the Revit platform:

C:\Program Files\Progman Oy\MagiCAD Supports & Hangers\r2017

C:\Program Files\Progman Oy\MagiCAD Supports & Hangers\r2016

The utilities that are common with MagiCAD for AutoCAD are installed in the following directories:

C:\Program Files\Common Files\MagiCAD Common\Check for Updates

C:\Program Files\Common Files\MagiCAD Common\License Management Utility

LOCATION OF FILES THAT CAN BE MODIFIED AT RUNTIME

By default, the location of the user-modifiable files is in the “local application folder”. It is, however, possible to affect the search path of these files when the software is installed as silent setup (see chapter “Utilising MSI properties”).

The default location is one of the following, depending on the Revit platform:

C:\ProgramData\MagiCAD-RS\2016_r2017

C:\ProgramData\MagiCAD-RS\2016_r2016

Subdirectory	Contents
Documentation	User’s Guide and “Read Me First”
Mrv	Datasets
Annotations	Text tags
Templates	Templates for MagiCAD for Revit

Please do not modify the contents of other subdirectories, nor the file `magiParameters.txt`.

The data files of MagiCAD Supports & Hangers plugin are installed under one of the following directories, depending on the Revit platform:

C:\ProgramData\Progman Oy\MagiCAD Supports & Hangers\r2017

C:\ProgramData\Progman Oy\MagiCAD Supports & Hangers\r2016

STARTING THE PROGRAM

The program will start automatically when you start Revit. The default template to be used with MagiCAD for Revit will also be loaded automatically.

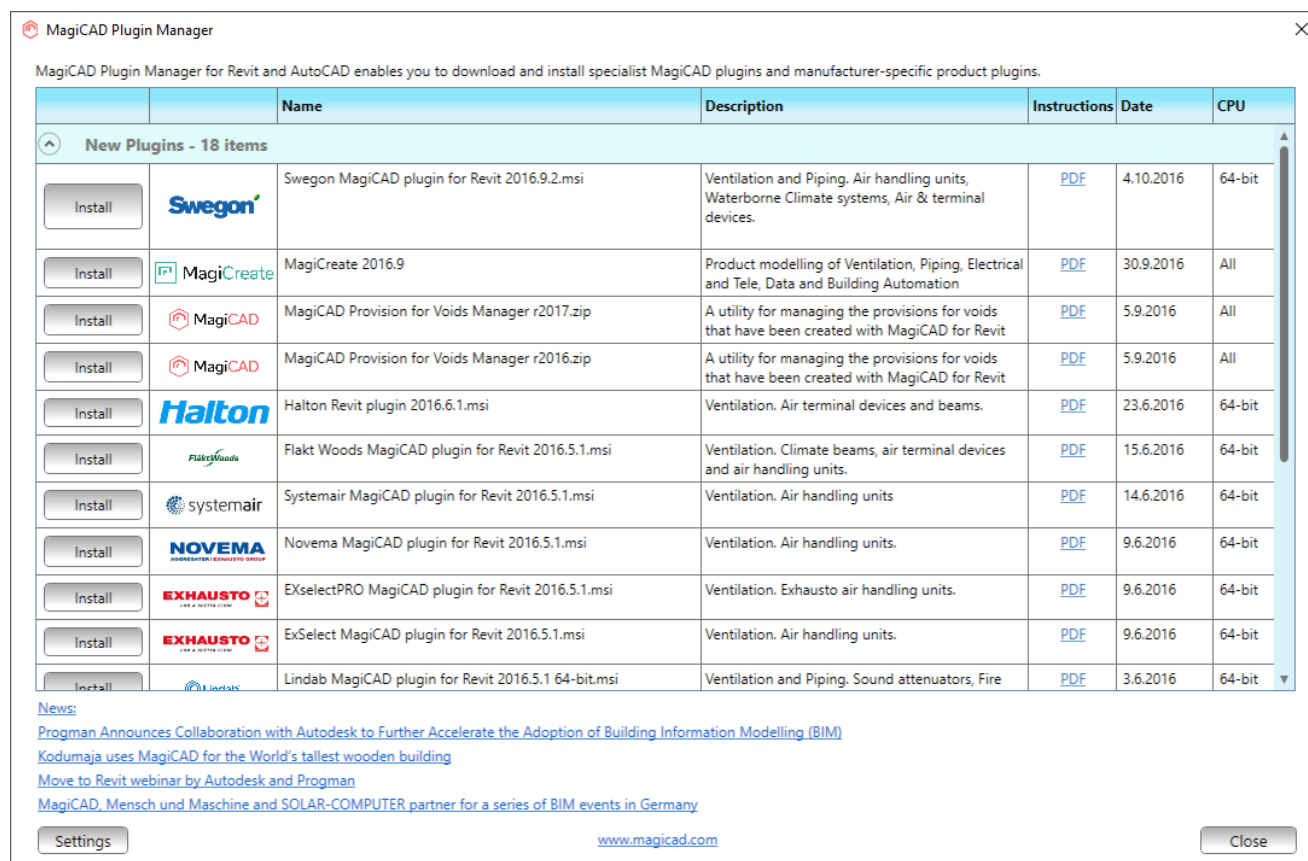
The "MagiCAD for Revit" folder does not include a shortcut icon for starting the program. Start Revit normally using its shortcut.

MagiCAD commands are found under "MagiCAD Common", "MagiCAD Ventilation", "MagiCAD Piping", and "MagiCAD Electrical" ribbon tabs.

MagiCAD Plugin Manager and *MagiCAD Supports & Hangers* are also loaded automatically when you start Revit.

MAGICAD PLUGIN MANAGER

When you start the program for the first time, *MagiCAD Plugin Manager* window opens and you can install third-party plugins to complement your software. You can also start the plugin manager later from the MagiCAD ribbon.



MagiCAD Plugin Manager for Revit and AutoCAD enables you to download and install specialist MagiCAD plugins and manufacturer-specific product plugins.

	Name	Description	Instructions	Date	CPU
Install	Swegon MagiCAD plugin for Revit 2016.9.2.msi	Ventilation and Piping. Air handling units, Waterborne Climate systems, Air & terminal devices.	PDF	4.10.2016	64-bit
Install	MagiCreate 2016.9	Product modelling of Ventilation, Piping, Electrical and Tele, Data and Building Automation	PDF	30.9.2016	All
Install	MagiCAD Provision for Voids Manager r2017.zip	A utility for managing the provisions for voids that have been created with MagiCAD for Revit	PDF	5.9.2016	All
Install	MagiCAD Provision for Voids Manager r2016.zip	A utility for managing the provisions for voids that have been created with MagiCAD for Revit	PDF	5.9.2016	All
Install	Halton Revit plugin 2016.6.1.msi	Ventilation. Air terminal devices and beams.	PDF	23.6.2016	64-bit
Install	Flakt Woods MagiCAD plugin for Revit 2016.5.1.msi	Ventilation. Climate beams, air terminal devices and air handling units.	PDF	15.6.2016	64-bit
Install	Systemair MagiCAD plugin for Revit 2016.5.1.msi	Ventilation. Air handling units	PDF	14.6.2016	64-bit
Install	Novema MagiCAD plugin for Revit 2016.5.1.msi	Ventilation. Air handling units.	PDF	9.6.2016	64-bit
Install	EXselectPRO MagiCAD plugin for Revit 2016.5.1.msi	Ventilation. Exhausto air handling units.	PDF	9.6.2016	64-bit
Install	ExSelect MagiCAD plugin for Revit 2016.5.1.msi	Ventilation. Air handling units.	PDF	9.6.2016	64-bit
Install	Lindab MagiCAD plugin for Revit 2016.5.1 64-bit.msi	Ventilation and Piping. Sound attenuators, Fire	PDF	3.6.2016	64-bit

News:

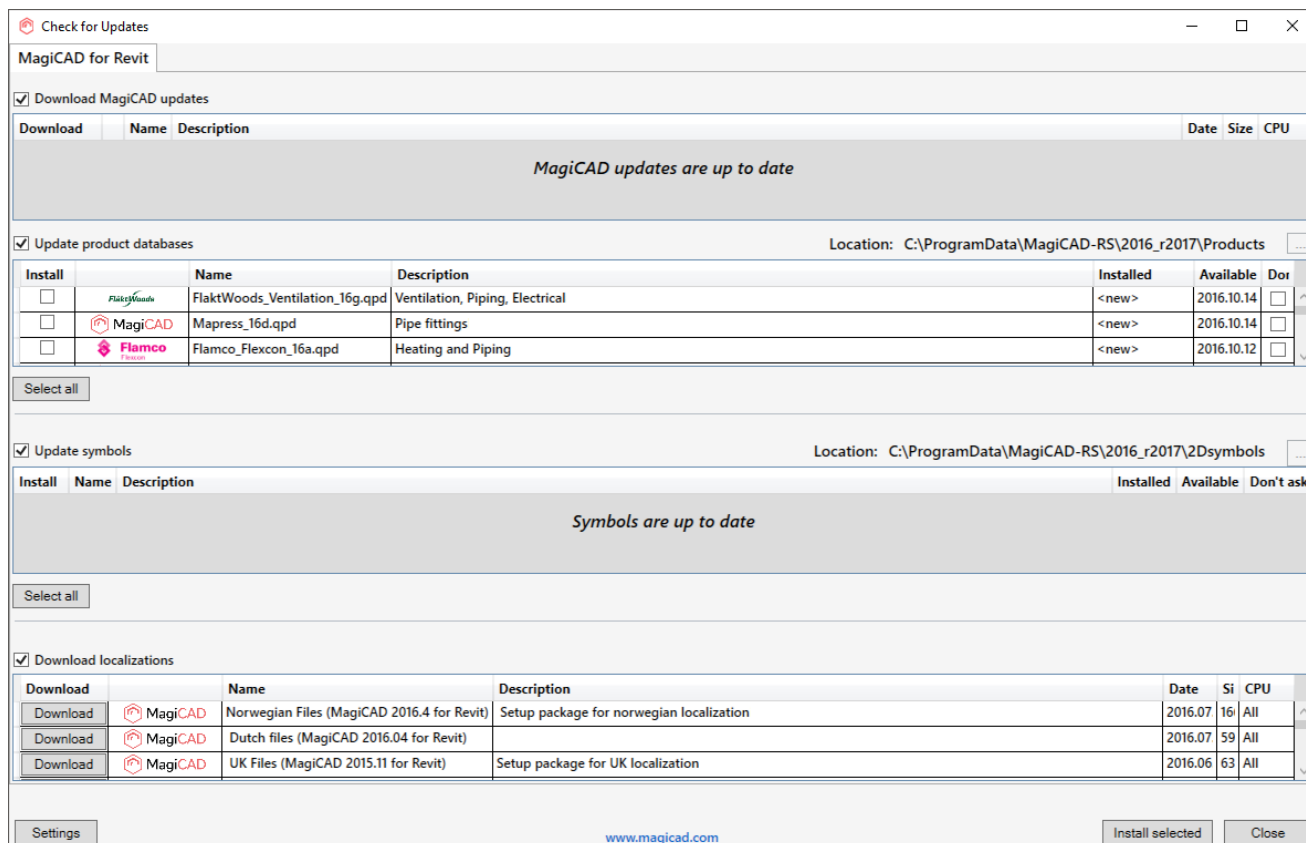
- [Progman Announces Collaboration with Autodesk to Further Accelerate the Adoption of Building Information Modelling \(BIM\)](#)
- [Kodumaja uses MagiCAD for the World's tallest wooden building](#)
- [Move to Revit webinar by Autodesk and Progman](#)
- [MagiCAD, Mensch und Maschine and SOLAR-COMPUTER partner for a series of BIM events in Germany](#)

Settings www.magicad.com Close

CHECKING FOR UPDATES

You need an open internet connection to be able to use this function.

When you click the **Check for Updates** button in the MagiCAD Common ribbon, a utility displaying the available updates starts.



Check for Updates

MagiCAD for Revit

Download MagiCAD updates

Download	Name	Description	Date	Size	CPU
<i>MagiCAD updates are up to date</i>					

Update product databases Location: C:\ProgramData\MagiCAD-RS\2016_r2017\Products

Install	Name	Description	Installed	Available	Don't ask
<input type="checkbox"/>	FlaktGuards FlaktWoods_Ventilation_16g.qpd	Ventilation, Piping, Electrical	<new>	2016.10.14	<input type="checkbox"/>
<input type="checkbox"/>	MagiCAD Mapress_16d.qpd	Pipe fittings	<new>	2016.10.14	<input type="checkbox"/>
<input type="checkbox"/>	Flamco Flamco_Flexcon_16a.qpd	Heating and Piping	<new>	2016.10.12	<input type="checkbox"/>

Select all

Update symbols Location: C:\ProgramData\MagiCAD-RS\2016_r2017\2DSymbols

Install	Name	Description	Installed	Available	Don't ask
<i>Symbols are up to date</i>					

Select all

Download localizations

Download	Name	Description	Date	Si	CPU
Download	MagiCAD Norwegian Files (MagiCAD 2016.4 for Revit)	Setup package for norwegian localization	2016.07	16	All
Download	MagiCAD Dutch files (MagiCAD 2016.04 for Revit)		2016.07	59	All
Download	MagiCAD UK Files (MagiCAD 2015.11 for Revit)	Setup package for UK localization	2016.06	63	All

Settings www.magiccad.com Install selected Close

INSTALLING MAGICAD ON MULTIPLE WORKSTATIONS

MSI INSTALLATION PACKAGE

The MagiCAD Setup procedure is performed using Microsoft Installer technology. The installation can be customised with the help of certain properties, which reduces the amount of work when a large number of workstations are configured.

The properties can be manipulated, e.g., by employing scripts or transforms.

If the program is installed using a silent setup, it is possible to manipulate two directory settings. If the MSI property is not specified, default value is used.

Property	Purpose	Default value
INSTALLDIR	The directory where the program executables will be installed.	C:\Program Files\MagiCAD for Revit\2016_r2017 Note: this may vary depending on the language of the operating system and the program version
DIR_LOCALDATA	The directory where the user-modifiable files will be located	C:\ProgramData\MagiCAD for Revit\2016_r2017 Note: this may vary depending on the language of the operating system and the program version
UI_LANGUAGE	User interface language of the program. 1512=English 1513=German 1515=French 1528=Russian 1539=Chinese	1512
LICENSE_SERVER	Server(s) containing network licenses defined in <code>port@host</code> format. Multiple servers are separated with a semicolon.	

Note that the DIR_LOCALDATA property affects only the search path that is written to the program registry. The directory specification is provided in case you want the program to search the files from a different directory (e.g. a shared network directory).

The setup program still copies the files to the default directory on the workstation.

Sample installation batch files

```
msiexec /i "MagiCAD 2016.11 for Revit MEP 2017 (64bit).msi" /qb
INSTALLDIR="C:\MC_Revit_201611_r2017" DIR_LOCALDATA="X:\MC_Revit_LocalData"
```

This sample batch installs the 64-bit Revit 2017 compatible version of MagiCAD to the directory C:\MC_Revit_201611_r2017 and writes the registry so that the data files are read/written in directory X:\MC_Revit_LocalData.

The user interface language is English (default language) and the license server is not specified.

```
msiexec /i " MagiCAD 2016.11 for Revit MEP 2016 (64bit).msi" /qb
UI_LANGUAGE=1539 LICENSE_SERVER="@server1"
```

This sample batch installs the 64-bit Revit 2016 compatible version of MagiCAD to the default directory. User interface language is selected to be Chinese and the program uses network licenses that are located on *server1* (no port number specified). Default paths are used.

EXE INSTALLATION PACKAGE

Properties for installing MagiCAD 2016.11 for Revit (64-bit).exe using command line are limited to UI language and installation location.

Property	Purpose	Default value
InstallFolder	The directory where the program will be installed.	C:\Program Files\MagiCAD for Revit\2016_r2017 Note: may vary depending on the language of the operating system
Language	User interface language of the program. 1512=English 1513=German 1515=French 1528=Russian 1539=Chinese	1512

Sample installation batch files for exe package

Silent installation to default location with English UI language:

```
"MagiCAD 2016.11 for Revit MEP 2017 (64bit).exe" /silent
```

Silent installation, German UI language, custom location:

```
"MagiCAD 2016.11 for Revit MEP 2017 (64bit).exe" /silent /Language=1513
/InstallFolder="C:\Program Files\MagiCAD for Revit 2016.11"
```

Silent installation of patch package

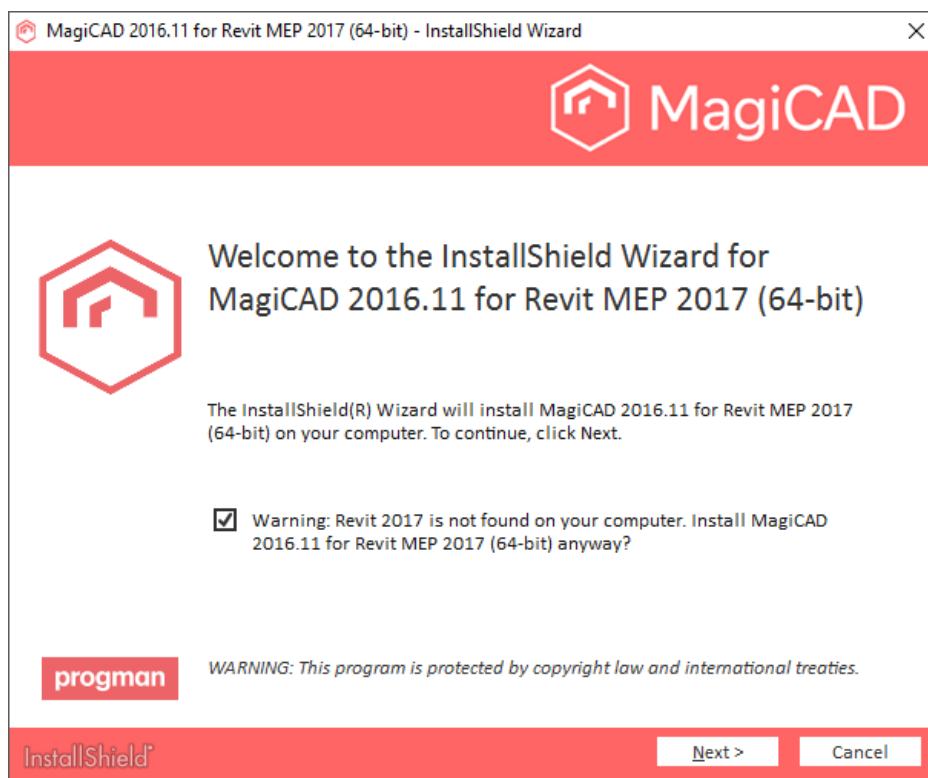
There are no parameters for patch packages, but you can install them silently:

```
"MagiCAD 2016.11 forRevit MEP 2017 (64bit)-Patch.exe" /silent
```

FREQUENTLY ASKED QUESTIONS

WHY DOES THE INSTALLER DISPLAY THE WARNING "REVIT IS NOT FOUND"?

There are two installer packages: MagiCAD for Revit MEP 2016 and MagiCAD for Revit MEP 2017. If you are trying to install the wrong version of MagiCAD, the installer displays the following warning:



WAS THE PATCH INSTALLED SUCCESSFULLY? I CANNOT FIND IT IN PROGRAMS AND FEATURES.

After patch installation, the MagiCAD name in Programs and Features remains the same, but Version number is updated.

HOW CAN I UNINSTALL A PATCH?

You cannot uninstall only the patch installation. Uninstalling MagiCAD from Programs and Features will uninstall MagiCAD entirely.