

---

User's Guide

**MagiCAD<sup>®</sup>**

# Uponor Template Instructions

Document revision 2016-12-30

MagiCAD® Copyright © 1998-2016 Progman Oy. All rights reserved.

MagiCAD is a registered trademark of Progman Oy.

AutoCAD is a registered trademark of Autodesk Inc.

Windows is a registered trademark of Microsoft Corporation.

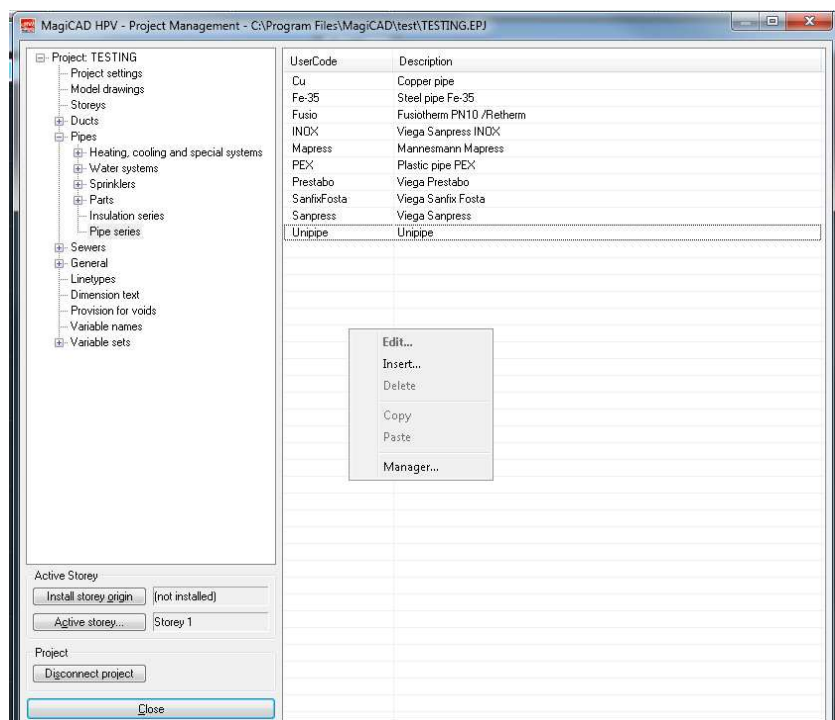
All other product names are trademarks of their respective holders.

**PROGMAN OY**  
*www.progman.fi*

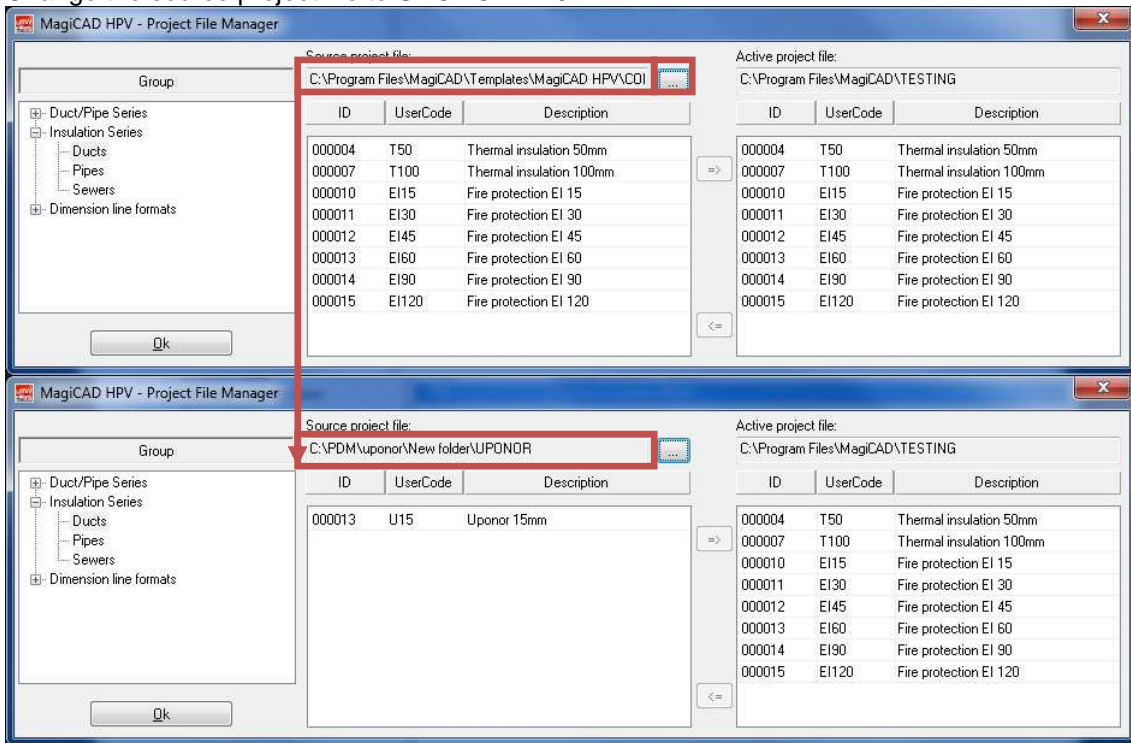
# Uponor template

## Taking the insulation series template into use

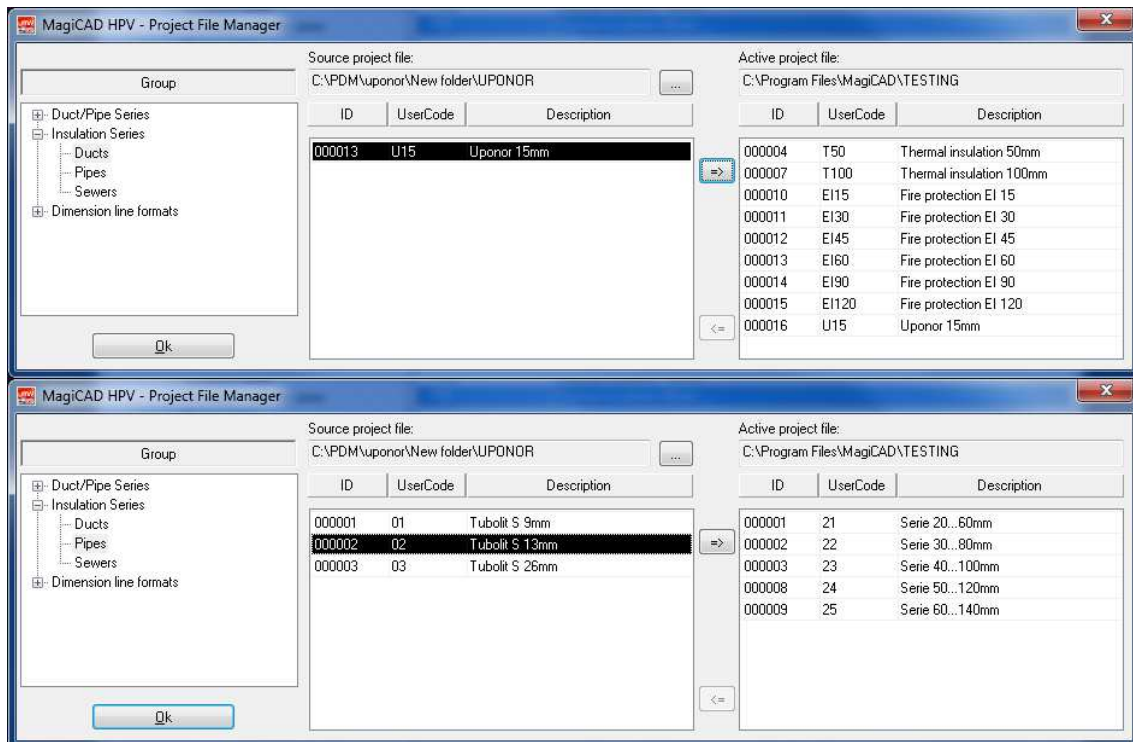
1. Download the .zip file to your computer. Unzip the file to a suitable location.
2. Start MagiCAD, open the project management window, and choose *Insulation series* from the left part of the window.
3. Click the right button of your mouse and choose *Manager*.



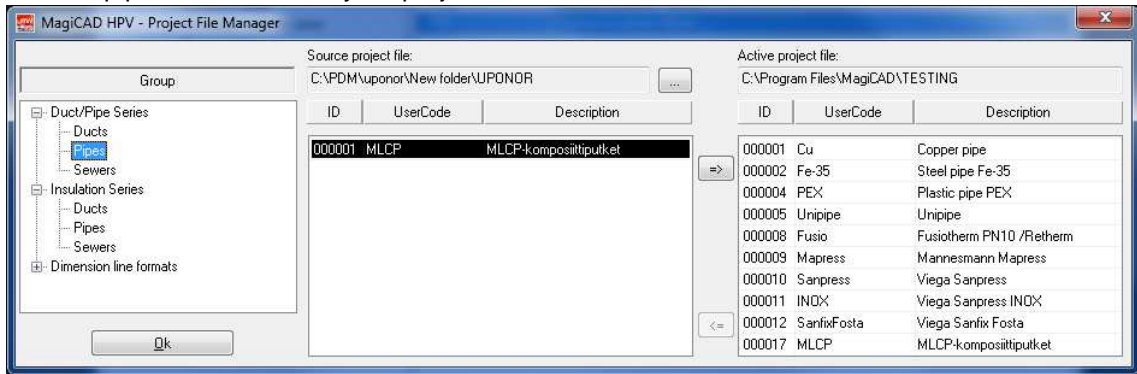
4. Change the source project file to UPONOR.EPJ.



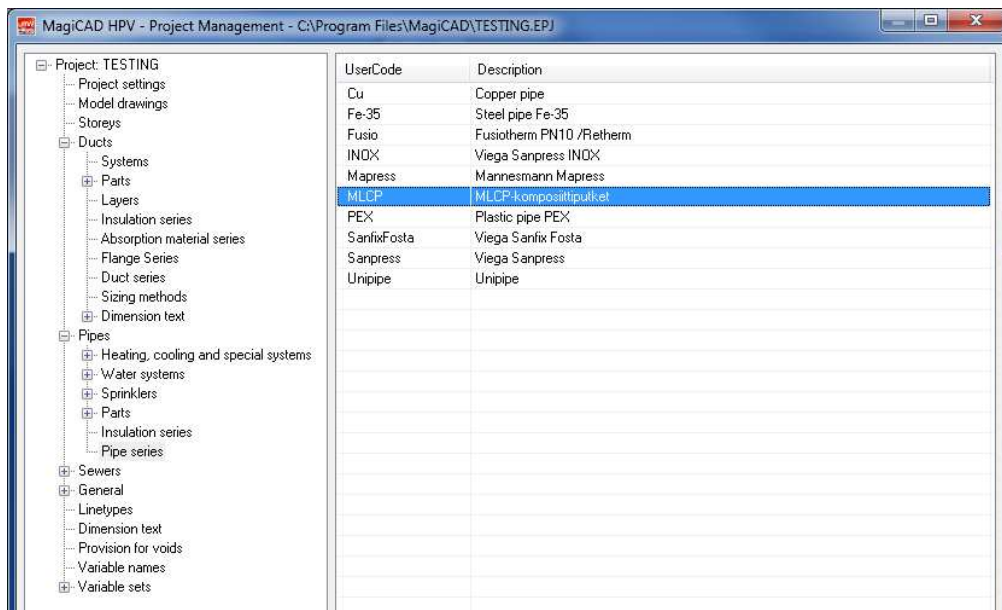
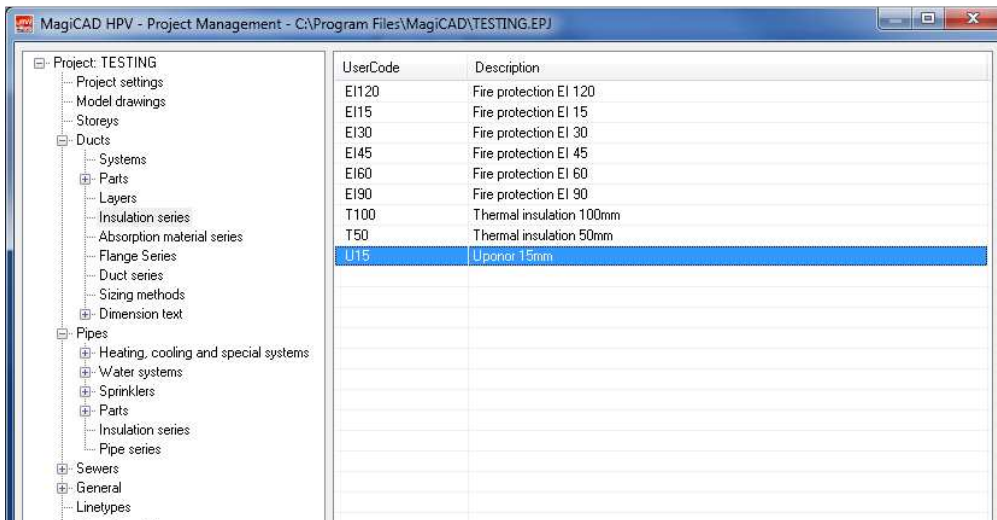
5. Choose insulation for duct or pipe series and add it to your project file.



6. Choose pipe series and add it to your project file

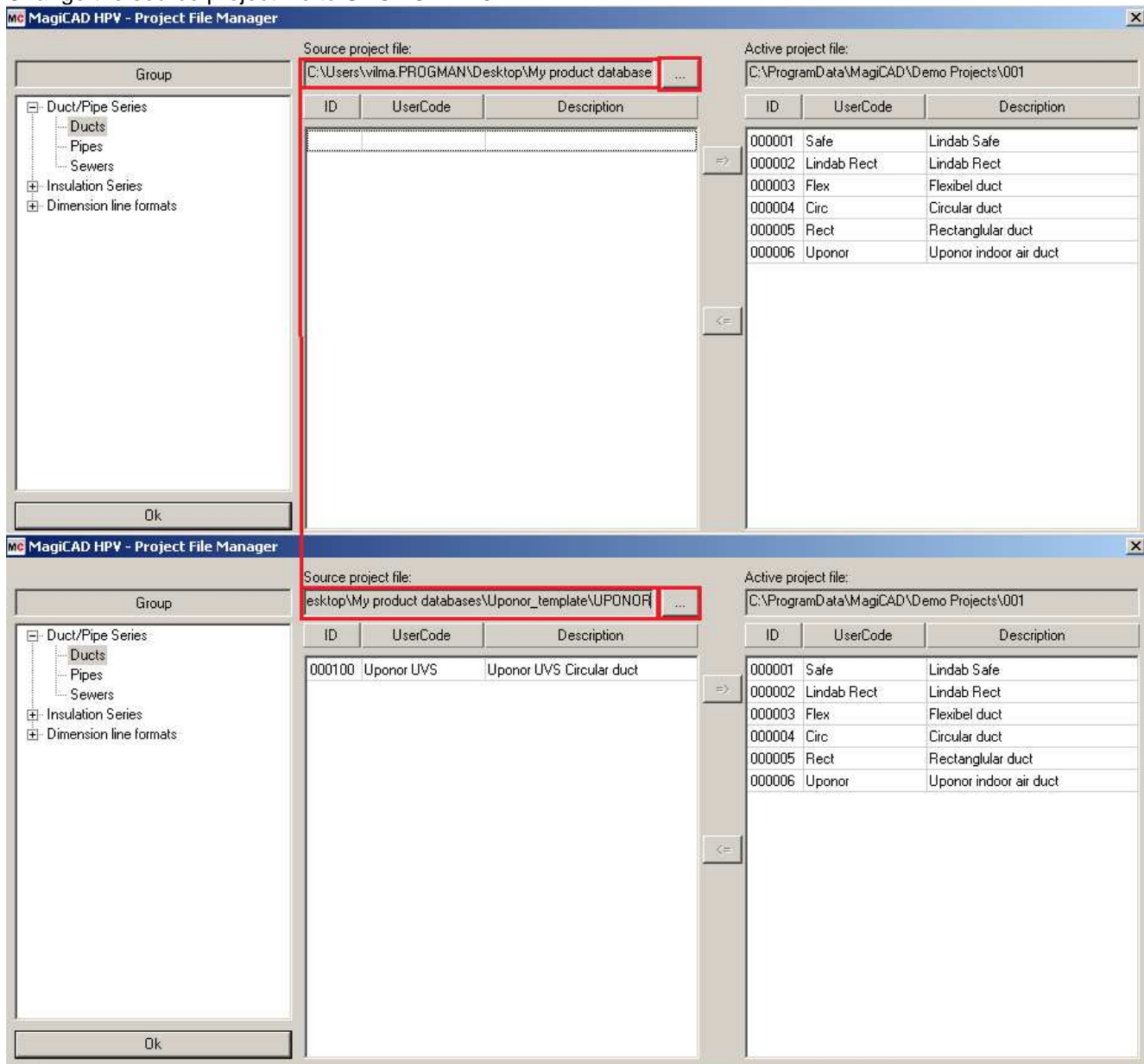


7. New Uponor's insulation and pipe series are added to the current project file and can be used in the drawing.

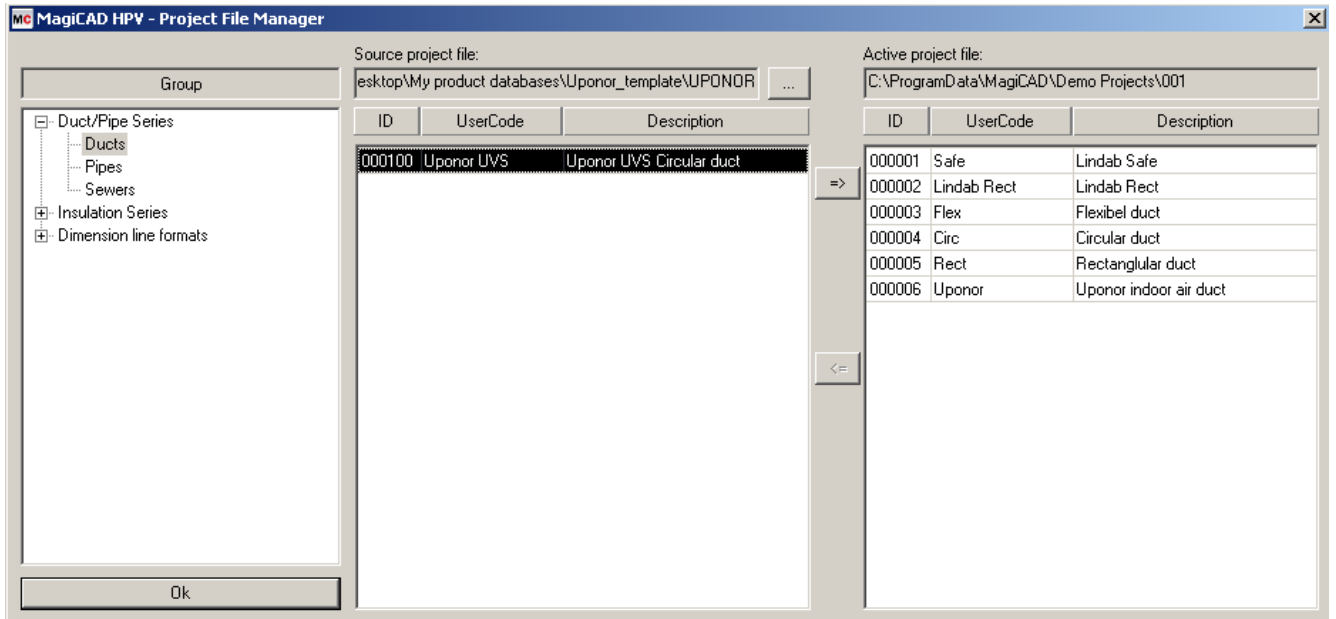




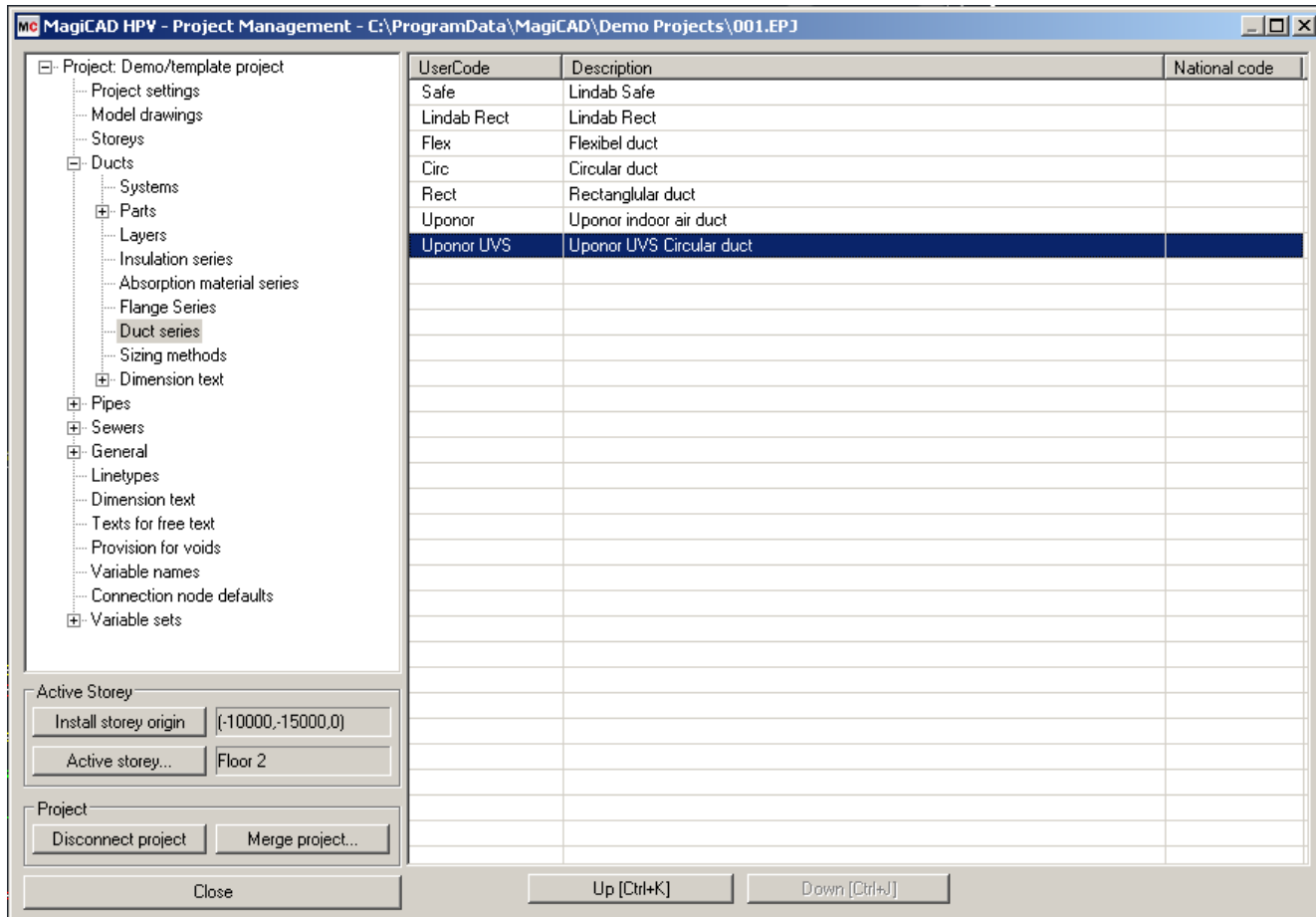
4. Change the source project file to UPONOR.EPJ.



5. Choose duct series and add it to your project file.



6. New Uponor's duct series are added to the current project file and can be used in the drawing.





**Mc MagiCAD HPV - Design Options**

**Duct Size**  
 Series: Uponor UVS Uponor UVS Circular duct  
 Size: 175  
 Locked: 175, 220, 277, 400, 500, 600, 800, 1000, 1200, 1400, 1600, 2000, 2500  
 Insulation Series: [ ]  
 s [mm]: [ ]  
 Flange series Series: [ ]  
 w [mm]: 20.0  
 h [mm]: 20.0

**Status**  
 Status: Not defined

**Routing**  
 Smart  Direct

**Height Difference in Branch**  
 Smart  90 deg  60 deg  
 45 deg  30 deg  15 deg

**Alignment**  
   Horizontal extra offset: 0.0

**Bends**  
 Circular: [ ] Rectang: [ ]

**Reductions**  
 Circular: [ ] Rectang: L=600 [ ] Rect/circ: L=600 [ ]

**Branches**  
 Circ/circ: [ ] Rect/rect: [ ] Circ/rect: [ ] Rect/circ: [ ]

Use outlets that break the duct as T-branches  
 Allow different connection sizes in trunk

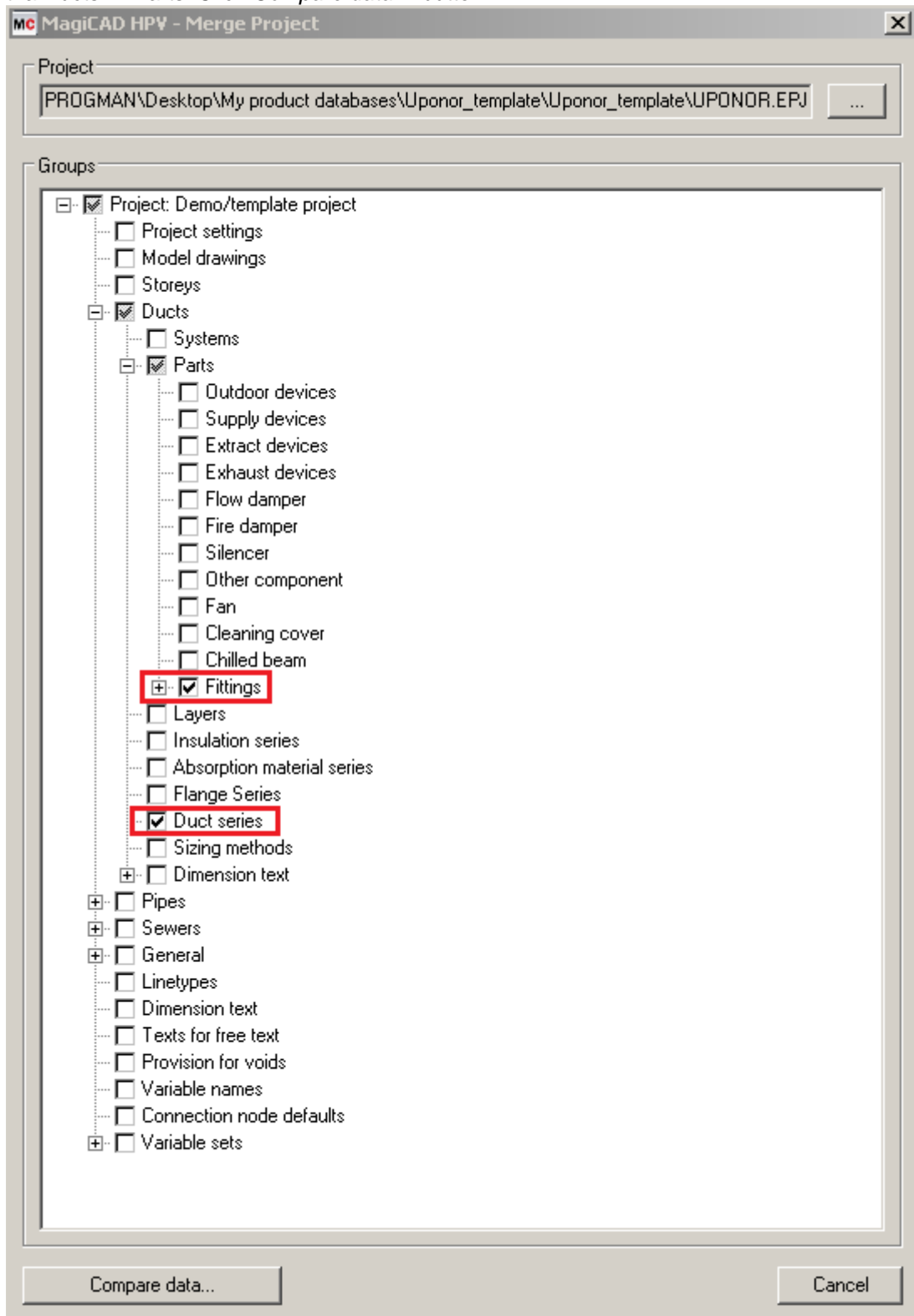
**Product selection**  
 Automatically select products (while drawing)  
 Show warning if product not found

**Automatic flexible duct connection**  
 Enabled  
 Series: [ ]  
 Length: 500

Ok Cancel



3. Change the source project file to UPONOR.EPJ. In the Groups part of the window, select Fittings under the Ducts -> Parts. Click *Compare data...* button



4. Opens comparison window. Click *OK - Merge*

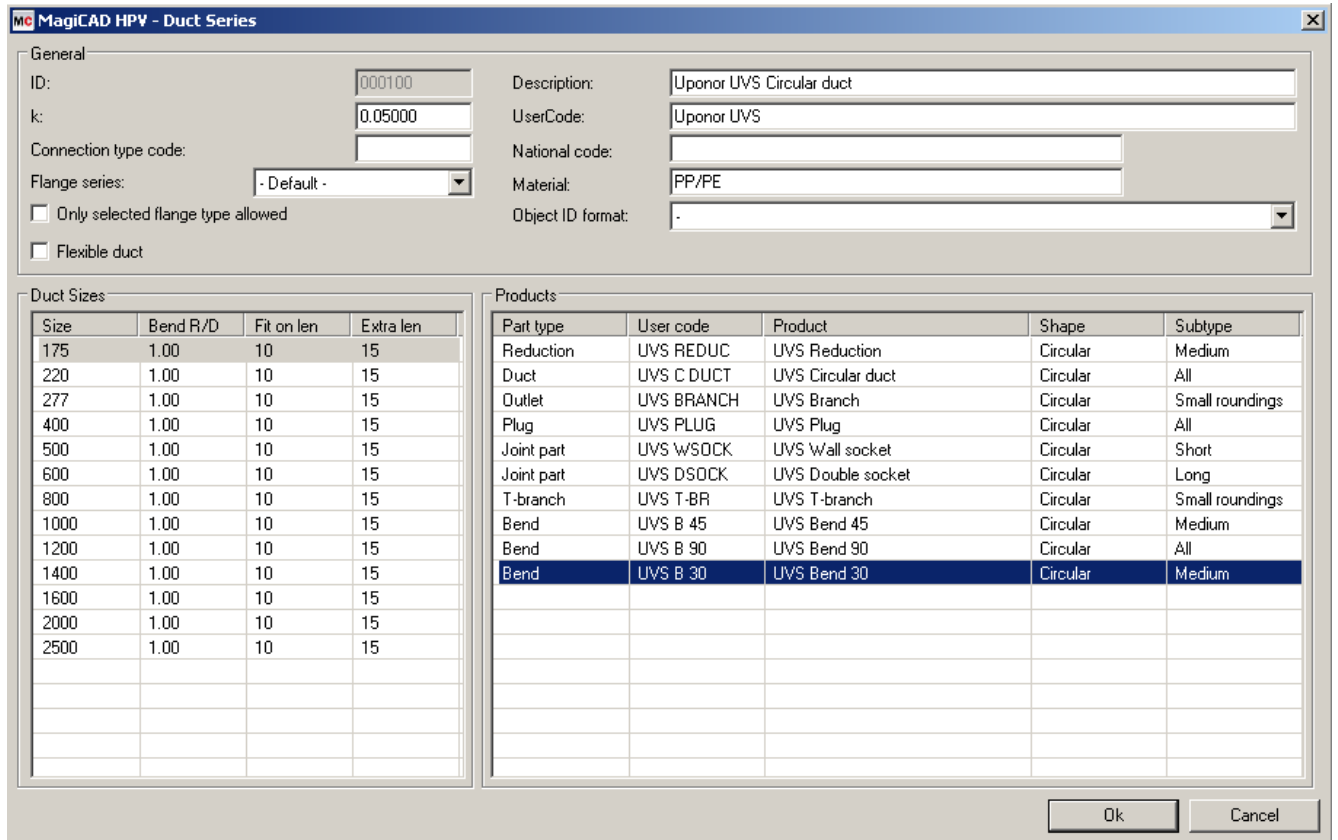


5. New Uponor's duct fittings are added to the current project file.

The screenshot shows the MagiCAD HPV Project Management interface. On the left is a tree view of the project structure, with 'Fittings' expanded and 'Bend' selected. On the right is a table listing components. The table has columns for UserCode, Manufacturer, Product, Product vari..., National code, and P15. The 'UVS B 30', 'UVS B 45', and 'UVS B 90' rows are highlighted in blue, indicating they are the new components added to the project.

UserCode	Manufacturer	Product	Product vari...	National code	P15
	Flakt	BDEB-15.*			
	Flakt	BDEB-30.*			
	Flakt	BDEB-45.*			
	Flakt	BDEB-60.*			
	Flakt	BDEB-90.*			
	Flakt	BAKB-3.*.*0			
	Flakt	BAKB-1.*.*0			
BU	Lindab	BU			
BFU	Lindab	BFU			
WA	Lindab	WA			
LBXR	Lindab	LBXR			
LBR	Lindab	LBR			
UVS B 30	Uponor	UVS Bend 30			
UVS B 45	Uponor	UVS Bend 45			
UVS B 90	Uponor	UVS Bend 90			

Below the table, there are controls for 'Active Storey' (Install storey origin: [-10000,-15000,0], Active storey...: Floor 2) and 'Project' (Disconnect project, Merge project...). At the bottom, there are buttons for 'Close', 'Up [Ctrl+K]', and 'Down [Ctrl+J]'.



- In the Design options window mark *Automatically select products (while drawing)* and *Show warning if product not found*

