



Installation Guide

MagiCAD 2016.11 UR-1 for Revit

Table of Contents

| | |
|--|-----------|
| GENERAL | 3 |
| SYSTEM REQUIREMENTS..... | 3 |
| SETUP ARCHITECTURE..... | 3 |
| SELECTING INSTALLATION PACKAGE | 4 |
| UPDATING EXISTING SOFTWARE | 5 |
| INSTALLING MAGICAD ON A SINGLE WORKSTATION..... | 6 |
| LICENSING | 10 |
| PROGRAM DIRECTORY STRUCTURE | 11 |
| EXECUTABLE FILES..... | 11 |
| LOCATION OF FILES THAT CAN BE MODIFIED AT RUNTIME | 11 |
| STARTING THE PROGRAM | 12 |
| MAGICAD PLUGIN MANAGER | 12 |
| CHECKING FOR UPDATES..... | 13 |
| INSTALLING MAGICAD ON MULTIPLE WORKSTATIONS | 14 |
| MSI INSTALLATION PACKAGE..... | 14 |
| <i>Sample installation batch files.....</i> | <i>15</i> |
| EXE INSTALLATION PACKAGE..... | 15 |
| <i>Sample installation batch files for exe package.....</i> | <i>15</i> |
| <i>Silent installation of patch package.....</i> | <i>15</i> |
| FREQUENTLY ASKED QUESTIONS | 16 |
| WHY DOES THE INSTALLER DISPLAY THE WARNING "REVIT IS NOT FOUND"? | 16 |
| WAS THE PATCH INSTALLED SUCCESSFULLY? I CANNOT FIND IT IN PROGRAMS AND FEATURES..... | 16 |
| HOW CAN I UNINSTALL A PATCH?..... | 16 |

GENERAL

SYSTEM REQUIREMENTS

MagiCAD for Revit version 2016.11 runs on

- 64-bit version of Autodesk Revit MEP 2017
- 64-bit version of Autodesk Revit MEP 2016
- 64-bit versions of Autodesk Building Design Suite Premium or Ultimate 2017
- 64-bit versions of Autodesk Building Design Suite Premium or Ultimate 2016

SETUP ARCHITECTURE

This chapter describes MagiCAD installation on a single workstation. In larger corporate networks also silent installations may be performed; in that case, see chapter “Installing MagiCAD on multiple workstations” and contact MagiCAD technical support if necessary.

Administrator privileges are required when running MagiCAD Setup.

The installer contains the following applications:

- MagiCAD for Revit
- License Management Utility
- Check for Updates
- MagiCAD Plugin Manager
- Supports & Hangers plug-in

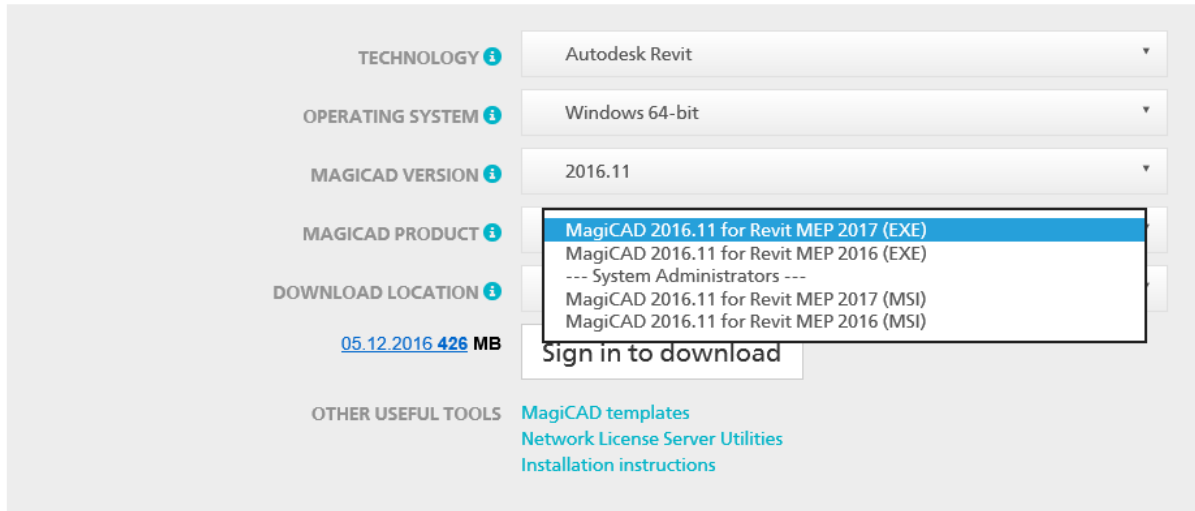
SELECTING INSTALLATION PACKAGE

First, go to MagiCAD Download Portal:

<https://portal.magicad.com/Download/GetProductCategoryList?categoryId=1>

Download MagiCAD

Welcome to the MagiCAD download page. To download MagiCAD installation package, define Autodesk technology and operating system, select the MagiCAD version, download site, MagiCAD product and sign in to begin download.



The screenshot shows the MagiCAD download portal interface. It features several dropdown menus for selection:

- TECHNOLOGY**: Autodesk Revit
- OPERATING SYSTEM**: Windows 64-bit
- MAGICAD VERSION**: 2016.11
- MAGICAD PRODUCT**: A dropdown menu is open, showing options: MagiCAD 2016.11 for Revit MEP 2017 (EXE) (highlighted), MagiCAD 2016.11 for Revit MEP 2016 (EXE), --- System Administrators ---, MagiCAD 2016.11 for Revit MEP 2017 (MSI), and MagiCAD 2016.11 for Revit MEP 2016 (MSI).

Below the dropdowns, there is a download site selection showing **05.12.2016 426 MB** and a **Sign in to download** button. At the bottom, there are links for **OTHER USEFUL TOOLS**: MagiCAD templates, Network License Server Utilities, and Installation instructions.

Note: Before beginning the installation process, please familiarise yourself with the instructions on installation and license activation in this **Installation Guide**.

In the MagiCAD Download Portal, the EXE and MSI installation packages are available in the **MAGICAD PRODUCT** section. With Update Releases, you also have the option to download the relevant installation package directly via MagiCAD's Check for Updates function.

Both of the installation packages install the full version of the MagiCAD Release, but there are differences in the installation procedure. Select the procedure which best suits your needs:

1. MagiCAD 2016.11 for Revit MEP (EXE)

- For manual installation. This is the default installation option for users who have administrator rights.
- Can be installed silently via command line, but the only available parameters are language and install location. If you need more installation parameters, use the MSI package

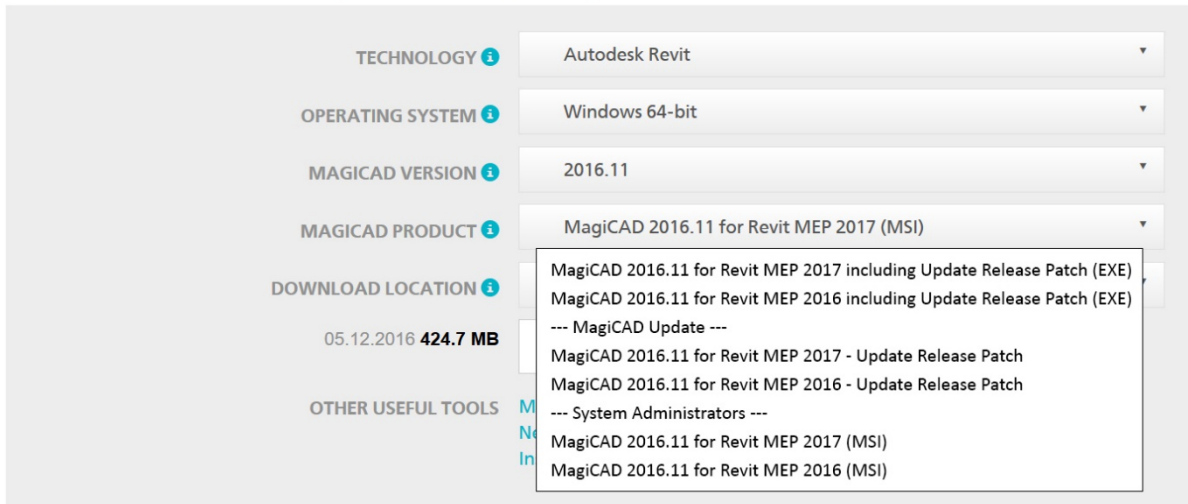
2. MagiCAD 2016.11 for Revit MEP (MSI) (---System Administrators---)

- This is the default installation option for System Administrators.
- Use this package if you have to use command line parameters.
- Must be installed from Admin Command Prompt.

UPDATING EXISTING SOFTWARE

Download MagiCAD

Welcome to the MagiCAD download page. To download MagiCAD installation package, define Autodesk technology and operating system, select the MagiCAD version, download site, MagiCAD product and sign in to begin download.



The screenshot shows a web form with the following fields and options:

- TECHNOLOGY**: Autodesk Revit
- OPERATING SYSTEM**: Windows 64-bit
- MAGICAD VERSION**: 2016.11
- MAGICAD PRODUCT**: MagiCAD 2016.11 for Revit MEP 2017 (MSI)
- DOWNLOAD LOCATION**: 05.12.2016 424.7 MB
- OTHER USEFUL TOOLS**: M, N, In

The dropdown menu for 'MAGICAD PRODUCT' is expanded, showing the following options:

- MagiCAD 2016.11 for Revit MEP 2017 including Update Release Patch (EXE)
- MagiCAD 2016.11 for Revit MEP 2016 including Update Release Patch (EXE)
- MagiCAD Update ---
- MagiCAD 2016.11 for Revit MEP 2017 - Update Release Patch
- MagiCAD 2016.11 for Revit MEP 2016 - Update Release Patch
- System Administrators ---
- MagiCAD 2016.11 for Revit MEP 2017 (MSI)
- MagiCAD 2016.11 for Revit MEP 2016 (MSI)

With Update Releases, you also have the option to download the relevant installation package directly via MagiCAD's Check for Updates function.

Note: Before beginning the installation process, please familiarise yourself with the instructions on installation and license activation in this Installation Guide.

There are three installation packages available for each Revit version in the **MAGICAD PRODUCT** section:

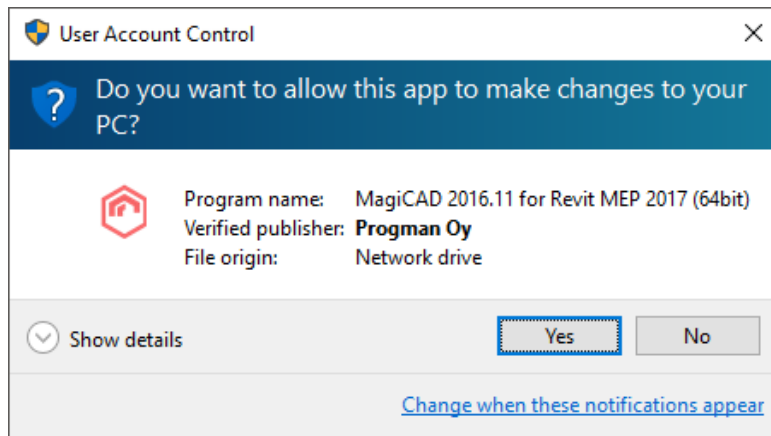
1. **MagiCAD 2016.11 for Revit MEP full installation incl. Update Release (EXE)**
 - If you do not have MagiCAD 2016.11 installed, select this package. If you have MagiCAD installed, you need to uninstall it before installing this package. The package installs both MagiCAD 2016.11 Release and Update Release Patch.
2. **MagiCAD 2016.11 for Revit MEP – Update Release Patch (---MagiCAD Update---**)
 - An existing MagiCAD 2016.11 installation must be found on the PC. If you have MagiCAD 2016.11 release already installed on the PC, use this installation package. The newest patch will always include the previous Update Releases. Activation codes are not needed for the Update Release patch installation.
3. **MagiCAD 2016.11 for Revit MEP (MSI) (---System Administrators---**)
 - This MSI package does **NOT include the Update Release Patch.**
 - Upgrade to Update Release by installing **MagiCAD 2016.11 for Revit MEP – Update Release Patch**
 - Use this package if you have to use command line parameters

INSTALLING MAGICAD ON A SINGLE WORKSTATION

This chapter describes MagiCAD installation on a single workstation. In larger corporate networks also silent installations may be performed; in that case, see chapter “Installing MagiCAD on multiple workstations” and contact MagiCAD technical support if necessary.

Administrator privileges are required when running MagiCAD Setup.

Run the setup package and follow the instructions.

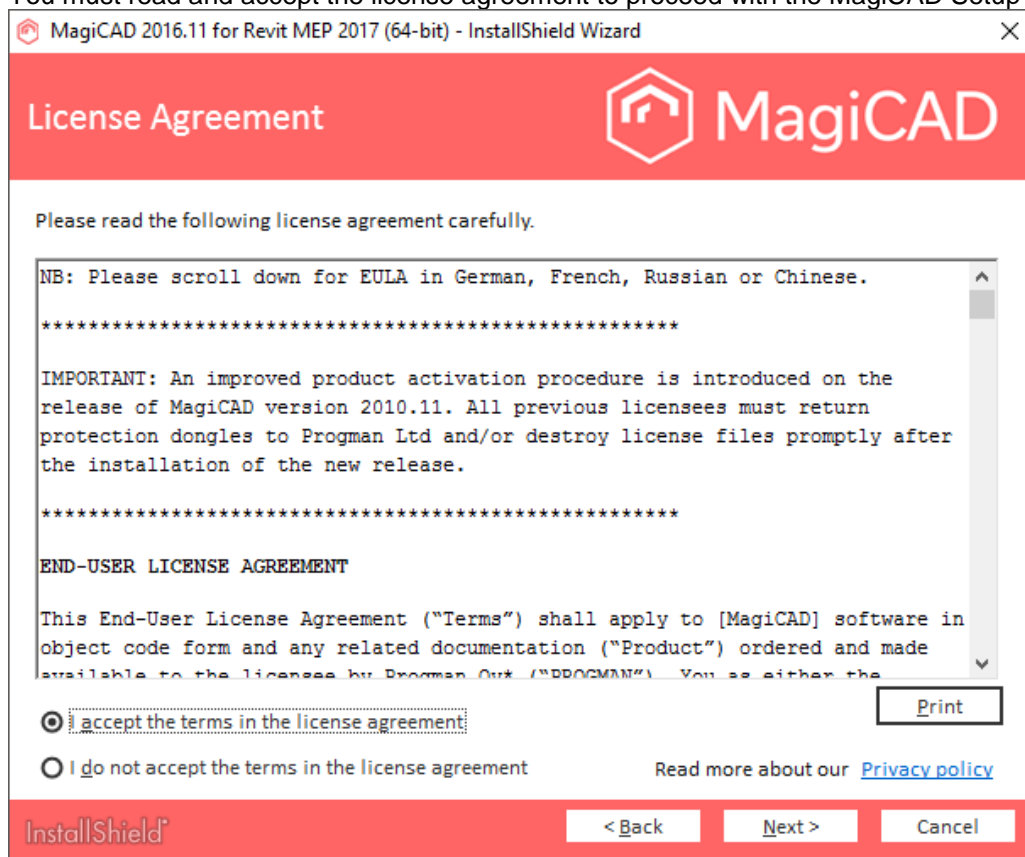


If User Account Control is enabled and the installer is not being run using Administrator rights, the installation requires Administrator permission to continue. If this dialog appears, click Yes.

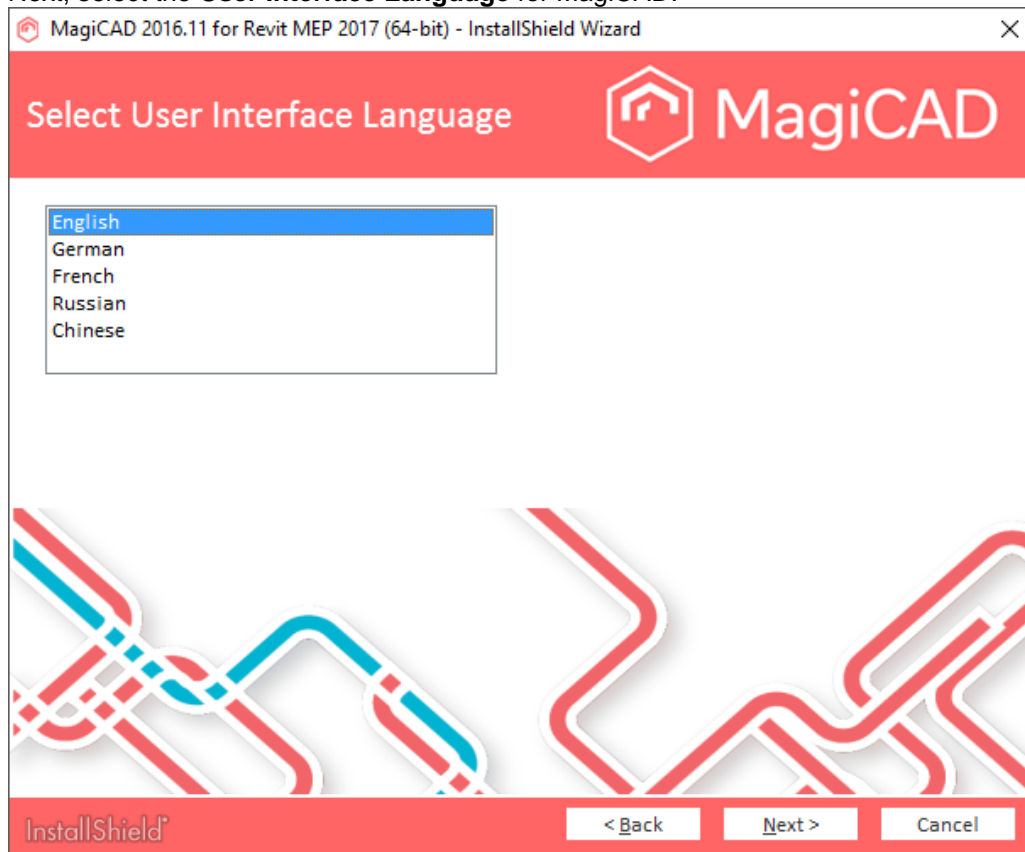


Click **Next**.

You must read and accept the license agreement to proceed with the MagiCAD Setup procedure.



Next, select the **User Interface Language** for MagiCAD.

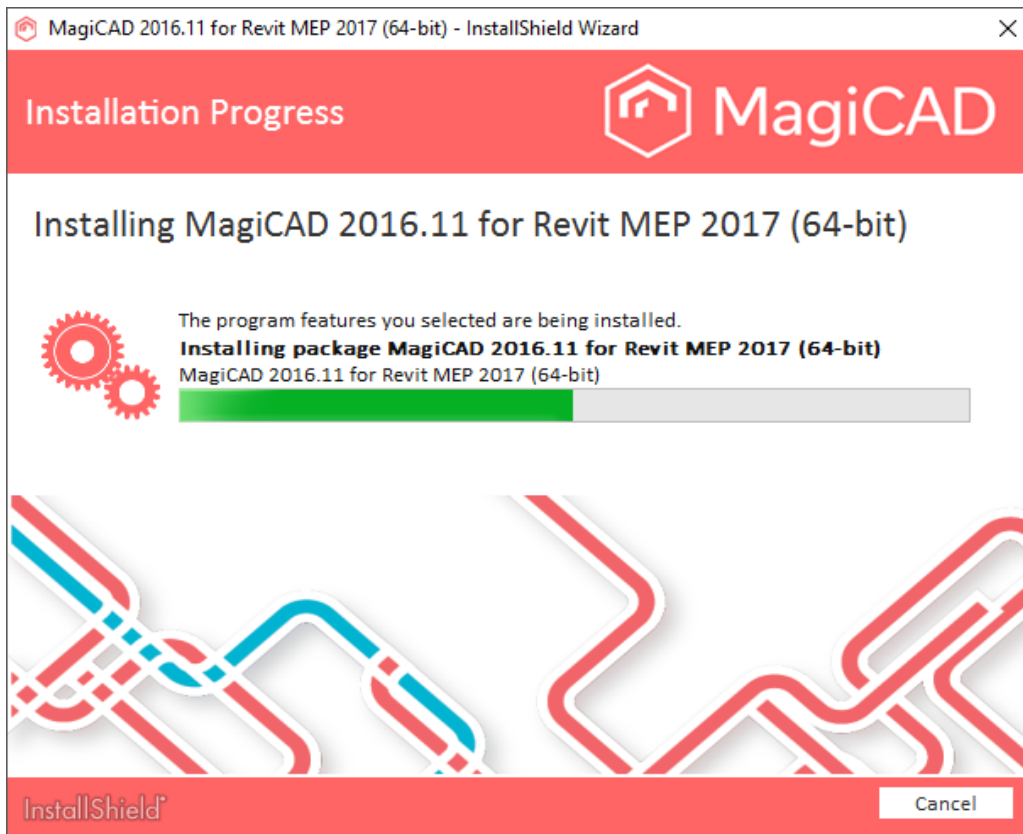


Select the **Destination Folder**. If you want to change the default folder, click **Change** and select a new Destination Folder. Click **Next** to continue.



Click **Install** to continue. The MagiCAD Setup will then begin copying files and defining the necessary settings.





Click **Finish** to complete the setup.

When the MagiCAD Setup procedure has been completed, **check that the program license is available**. Follow the instructions for license usage and activation in the next chapter "Licensing".

LICENSING

MagiCAD can be used with two types of licenses:

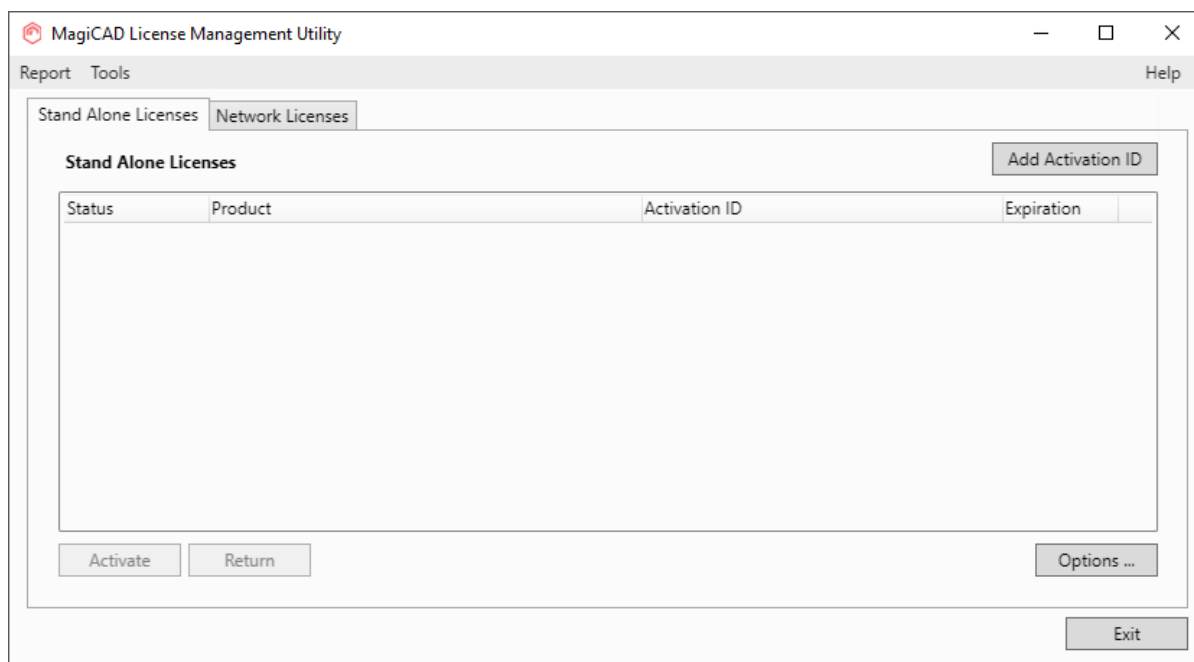
Stand-alone licenses, which are activated for a specific workstation. Internet connection is required when the licenses are activated. However, when the licenses have been activated, the program can be used also when disconnected from the network.

Network licenses, which are stored on a network server.

If your company's IT administrator has enabled license borrowing, you can borrow the application licenses to be used while disconnected from the network.

Setting up a network license server is described in a separate document.

Both license types are managed at the workstation using the license management utility. The shortcut link to the utility can be found in the **MagiCAD\ Tools** desktop folder.



If the version of the MagiCAD license currently activated on your workstation is 2015.11 SR-1 or older, you need to return the old license before you can activate the new license.

Select the product and click the *Return* button.

PROGRAM DIRECTORY STRUCTURE

The program executables are mainly installed to the **Destination Folder** selected during the MagiCAD Setup procedure.

EXECUTABLE FILES

The files of the MagiCAD Supports & Hangers application are installed under one of the following directories, depending on the Revit platform:

C:\Program Files\Progman Oy\MagiCAD Supports & Hangers\r2017

C:\Program Files\Progman Oy\MagiCAD Supports & Hangers\r2016

The utilities that are common with MagiCAD for AutoCAD are installed in the following directories:

C:\Program Files\Common Files\MagiCAD Common\Check for Updates

C:\Program Files\Common Files\MagiCAD Common\License Management Utility

LOCATION OF FILES THAT CAN BE MODIFIED AT RUNTIME

By default, the location of the user-modifiable files is in the “local application folder”. It is, however, possible to affect the search path of these files when the software is installed as silent setup (see chapter “Utilising MSI properties”).

The default location is one of the following, depending on the Revit platform:

C:\ProgramData\MagiCAD-RS\2016_r2017

C:\ProgramData\MagiCAD-RS\2016_r2016

| Subdirectory | Contents |
|---------------|----------------------------------|
| Documentation | User’s Guide and “Read Me First” |
| Mrv | Datasets |
| Annotations | Text tags |
| Templates | Templates for MagiCAD for Revit |

Please do not modify the contents of other subdirectories, nor the file `magiParameters.txt`.

The data files of MagiCAD Supports & Hangers plugin are installed under one of the following directories, depending on the Revit platform:

C:\ProgramData\Progman Oy\MagiCAD Supports & Hangers\r2017

C:\ProgramData\Progman Oy\MagiCAD Supports & Hangers\r2016

STARTING THE PROGRAM

The program will start automatically when you start Revit. The default template to be used with MagiCAD for Revit will also be loaded automatically.

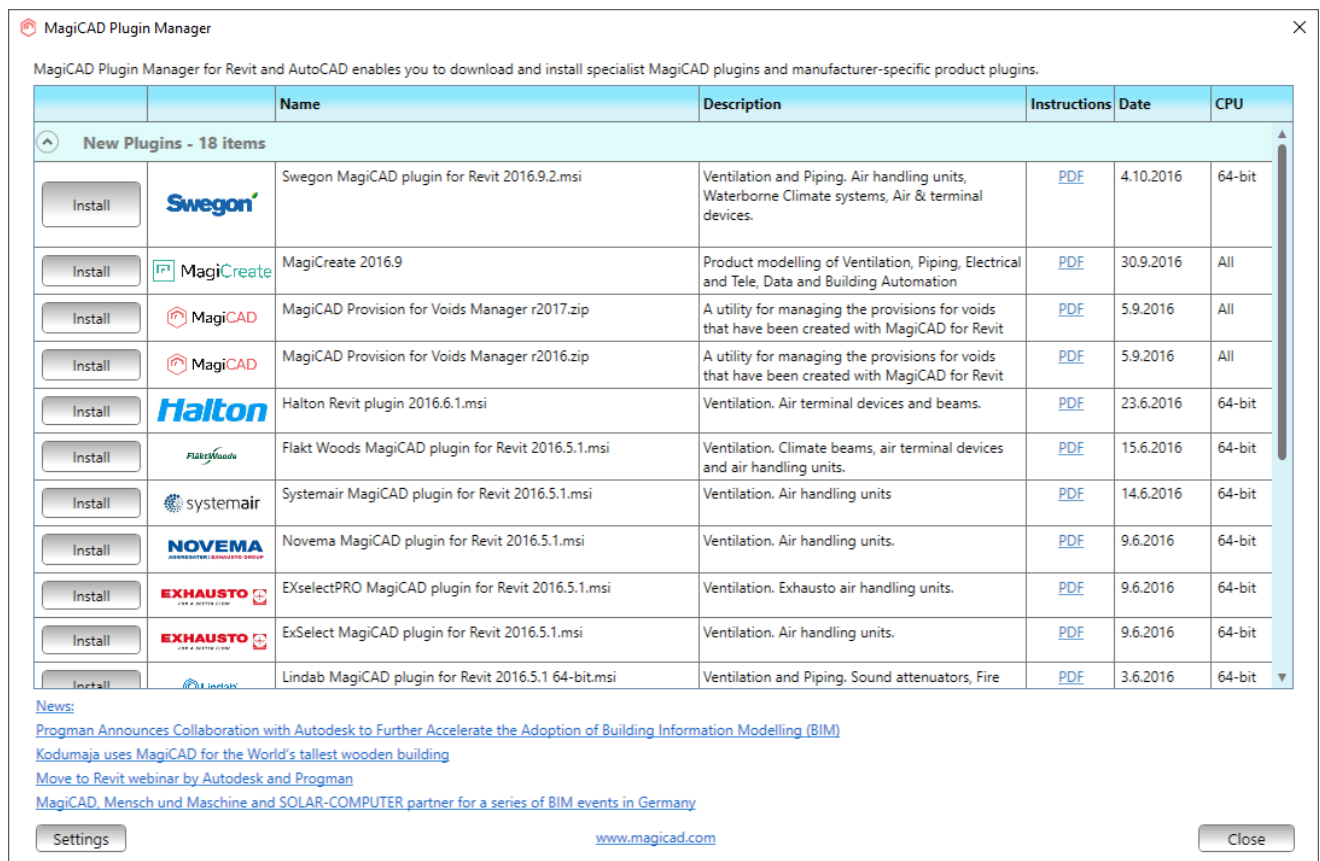
The "MagiCAD for Revit" folder does not include a shortcut icon for starting the program. Start Revit normally using its shortcut.

MagiCAD commands are found under "MagiCAD Common", "MagiCAD Ventilation", "MagiCAD Piping", and "MagiCAD Electrical" ribbon tabs.

MagiCAD Plugin Manager and *MagiCAD Supports & Hangers* are also loaded automatically when you start Revit.

MAGICAD PLUGIN MANAGER

When you start the program for the first time, *MagiCAD Plugin Manager* window opens and you can install third-party plugins to complement your software. You can also start the plugin manager later from the MagiCAD ribbon.



MagiCAD Plugin Manager for Revit and AutoCAD enables you to download and install specialist MagiCAD plugins and manufacturer-specific product plugins.

| | Name | Description | Instructions | Date | CPU |
|---------|---|---|---------------------|-----------|--------|
| Install | Swegon MagiCAD plugin for Revit 2016.9.2.msi | Ventilation and Piping. Air handling units, Waterborne Climate systems, Air & terminal devices. | PDF | 4.10.2016 | 64-bit |
| Install | MagiCreate 2016.9 | Product modelling of Ventilation, Piping, Electrical and Tele, Data and Building Automation | PDF | 30.9.2016 | All |
| Install | MagiCAD Provision for Voids Manager r2017.zip | A utility for managing the provisions for voids that have been created with MagiCAD for Revit | PDF | 5.9.2016 | All |
| Install | MagiCAD Provision for Voids Manager r2016.zip | A utility for managing the provisions for voids that have been created with MagiCAD for Revit | PDF | 5.9.2016 | All |
| Install | Halton Revit plugin 2016.6.1.msi | Ventilation. Air terminal devices and beams. | PDF | 23.6.2016 | 64-bit |
| Install | Flakt Woods MagiCAD plugin for Revit 2016.5.1.msi | Ventilation. Climate beams, air terminal devices and air handling units. | PDF | 15.6.2016 | 64-bit |
| Install | Systemair MagiCAD plugin for Revit 2016.5.1.msi | Ventilation. Air handling units | PDF | 14.6.2016 | 64-bit |
| Install | Novema MagiCAD plugin for Revit 2016.5.1.msi | Ventilation. Air handling units. | PDF | 9.6.2016 | 64-bit |
| Install | EXselectPRO MagiCAD plugin for Revit 2016.5.1.msi | Ventilation. Exhausto air handling units. | PDF | 9.6.2016 | 64-bit |
| Install | ExSelect MagiCAD plugin for Revit 2016.5.1.msi | Ventilation. Air handling units. | PDF | 9.6.2016 | 64-bit |
| Install | Lindab MagiCAD plugin for Revit 2016.5.1 64-bit.msi | Ventilation and Piping. Sound attenuators, Fire | PDF | 3.6.2016 | 64-bit |

News:

- [Progman Announces Collaboration with Autodesk to Further Accelerate the Adoption of Building Information Modelling \(BIM\)](#)
- [Kodumaja uses MagiCAD for the World's tallest wooden building](#)
- [Move to Revit webinar by Autodesk and Progman](#)
- [MagiCAD, Mensch und Maschine and SOLAR-COMPUTER partner for a series of BIM events in Germany](#)

Settings www.magicad.com Close

CHECKING FOR UPDATES

You need an open internet connection to be able to use this function.

When you click the **Check for Updates** button in the MagiCAD Common ribbon, a utility displaying the available updates starts.

Check for Updates
- □ ×

MagiCAD for Revit

Download MagiCAD updates

| Download | Name | Description | Date | Size | CPU |
|---------------------------------------|------|-------------|------|------|-----|
| <i>MagiCAD updates are up to date</i> | | | | | |

Update product databases Location: C:\ProgramData\MagiCAD-RS\2016_r2017\Products ...

| Install | Name | Description | Installed | Available | Dor |
|--------------------------|--------------------------------|---------------------------------|-----------|------------|-----|
| <input type="checkbox"/> | FlaktWoods_Ventilation_16g.qpd | Ventilation, Piping, Electrical | <new> | 2016.10.14 | □ ^ |
| <input type="checkbox"/> | Mapress_16d.qpd | Pipe fittings | <new> | 2016.10.14 | □ |
| <input type="checkbox"/> | Flamco_Flexcon_16a.qpd | Heating and Piping | <new> | 2016.10.12 | □ v |

Update symbols Location: C:\ProgramData\MagiCAD-RS\2016_r2017\2DSymbols ...

| Install | Name | Description | Installed | Available | Don't ask |
|-------------------------------|------|-------------|-----------|-----------|-----------|
| <i>Symbols are up to date</i> | | | | | |

Download localizations

| Download | Name | Description | Date | Si | CPU |
|---|--|--|---------|----|-----|
| <input type="button" value="Download"/> | Norwegian Files (MagiCAD 2016.4 for Revit) | Setup package for norwegian localization | 2016.07 | 16 | All |
| <input type="button" value="Download"/> | Dutch files (MagiCAD 2016.04 for Revit) | | 2016.07 | 59 | All |
| <input type="button" value="Download"/> | UK Files (MagiCAD 2015.11 for Revit) | Setup package for UK localization | 2016.06 | 63 | All |

www.magicad.com

INSTALLING MAGICAD ON MULTIPLE WORKSTATIONS

MSI INSTALLATION PACKAGE

The MagiCAD Setup procedure is performed using Microsoft Installer technology. The installation can be customised with the help of certain properties, which reduces the amount of work when a large number of workstations are configured.

The properties can be manipulated, e.g., by employing scripts or transforms.

If the program is installed using a silent setup, it is possible to manipulate two directory settings. If the MSI property is not specified, default value is used.

| Property | Purpose | Default value |
|----------------|--|--|
| INSTALLDIR | The directory where the program executables will be installed. | C:\Program Files\MagiCAD for Revit\2016_r2017 Note: this may vary depending on the language of the operating system and the program version |
| DIR_LOCALDATA | The directory where the user-modifiable files will be located | C:\ProgramData\MagiCAD for Revit\2016_r2017 Note: this may vary depending on the language of the operating system and the program version |
| UI_LANGUAGE | User interface language of the program. 1512=English 1513=German 1515=French 1528=Russian 1539=Chinese | 1512 |
| LICENSE_SERVER | Server(s) containing network licenses defined in <code>port@host</code> format. Multiple servers are separated with a semicolon. | |

Note that the DIR_LOCALDATA property affects only the search path that is written to the program registry. The directory specification is provided in case you want the program to search the files from a different directory (e.g. a shared network directory).

The setup program still copies the files to the default directory on the workstation.

Sample installation batch files

```
msiexec /i "MagiCAD 2016.11 for Revit MEP 2017 (64bit).msi" /qb
INSTALLDIR="C:\MC_Revit_201611_r2017" DIR_LOCALDATA="X:\MC_Revit_LocalData"
```

This sample batch installs the 64-bit Revit 2017 compatible version of MagiCAD to the directory C:\MC_Revit_201611_r2017 and writes the registry so that the data files are read/written in directory X:\MC_Revit_LocalData.

The user interface language is English (default language) and the license server is not specified.

```
msiexec /i " MagiCAD 2016.11 for Revit MEP 2016 (64bit).msi" /qb
UI_LANGUAGE=1539 LICENSE_SERVER="@server1"
```

This sample batch installs the 64-bit Revit 2016 compatible version of MagiCAD to the default directory. User interface language is selected to be Chinese and the program uses network licenses that are located on *server1* (no port number specified). Default paths are used.

EXE INSTALLATION PACKAGE

Properties for installing MagiCAD 2016.11 for Revit (64-bit).exe using command line are limited to UI language and installation location.

| Property | Purpose | Default value |
|---------------|---|---|
| InstallFolder | The directory where the program will be installed. | C:\Program Files\MagiCAD for Revit\2016_r2017 Note: may vary depending on the language of the operating system |
| Language | User interface language of the program. 1512=English 1513=German 1515=French 1528=Russian 1539=Chinese | 1512 |

Sample installation batch files for exe package

Silent installation to default location with English UI language:

```
"MagiCAD 2016.11 for Revit MEP 2017 (64bit).exe" /silent
```

Silent installation, German UI language, custom location:

```
"MagiCAD 2016.11 for Revit MEP 2017 (64bit).exe" /silent /Language=1513
/InstallFolder="C:\Program Files\MagiCAD for Revit 2016.11"
```

Silent installation of patch package

There are no parameters for patch packages, but you can install them silently:

```
"MagiCAD 2016.11 forRevit MEP 2017 (64bit)-Patch.exe" /silent
```

FREQUENTLY ASKED QUESTIONS

WHY DOES THE INSTALLER DISPLAY THE WARNING "REVIT IS NOT FOUND"?

There are two installer packages: MagiCAD for Revit MEP 2016 and MagiCAD for Revit MEP 2017. If you are trying to install the wrong version of MagiCAD, the installer displays the following warning:



WAS THE PATCH INSTALLED SUCCESSFULLY? I CANNOT FIND IT IN PROGRAMS AND FEATURES.

After patch installation, the MagiCAD name in Programs and Features remains the same, but Version number is updated.

HOW CAN I UNINSTALL A PATCH?

You cannot uninstall only the patch installation. Uninstalling MagiCAD from Programs and Features will uninstall MagiCAD entirely.