



Repus MagiCAD Plugin for AutoCAD

13.06.2018

CONTENTS

ABOUT THIS DOCUMENT	3
INSTALLING THE SOFTWARE	3
<i>Required third-party software.....</i>	<i>3</i>
<i>Installation</i>	<i>3</i>
STARTING THE PROGRAM	4
HOW TO USE THE PLUGIN	5

ABOUT THIS DOCUMENT

This document contains instructions on using plugin *Repus MagiCAD Plugin*.
Repus MagiCAD Plugin is a Web-based extension to MagiCAD software.

INSTALLING THE SOFTWARE

Required third-party software

64-bit Repus MagiCAD Plugin works with the following MagiCAD for AutoCAD versions

- MagiCAD 2018 and AutoCAD 2015-2018
- MagiCAD 2019 and AutoCAD 2016-2019

Installation

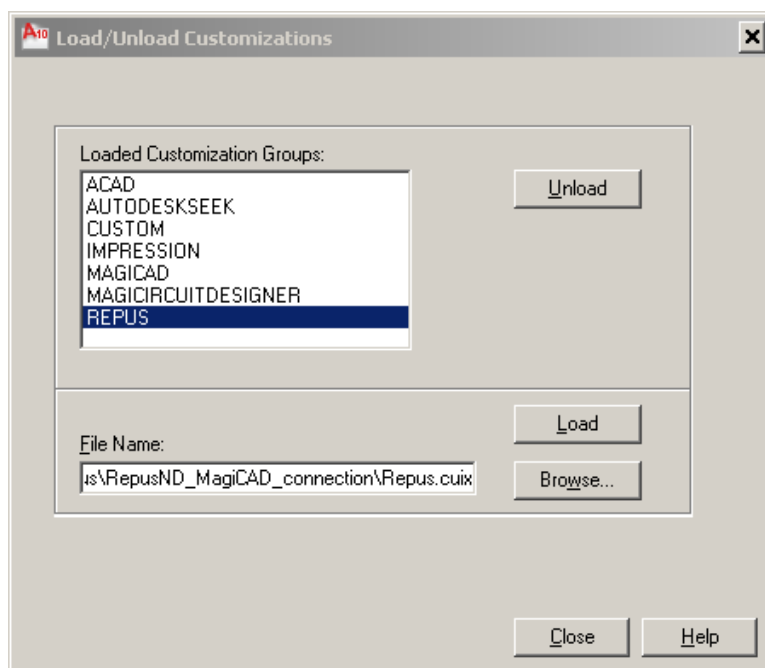
1. The installation package is available at Progman's website
<https://portal.magicad.com/download/ProductSearch?searchStr=repus&categoryId=3>
2. Run the Repus MagiCAD plug-in installer on your workstation

Administrator privileges are recommended for installation. **Note if you have several AutoCAD versions on your workstation:** Before you run the installation program, start MagiCAD to make sure that *Repus MagiCAD Plugin* installs on the same AutoCAD platform as MagiCAD.

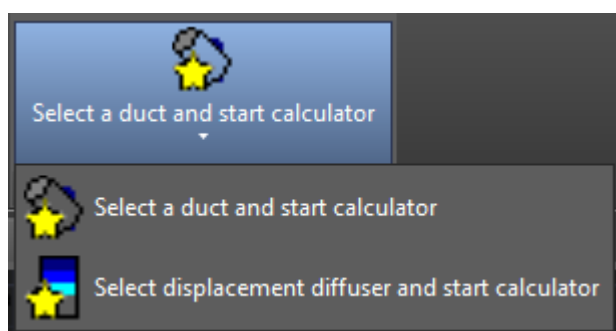
STARTING THE PROGRAM

Before you start using *Repus MagiCAD Plugin*, start MagiCAD and open a Ventilation and Piping project.

If the plugin ribbon button or toolbar is not visible in AutoCAD, you need to load the customization file (.cuix) manually. Run **CULOAD** or **MENULOAD** in AutoCAD, and browse the customization file from the following directory: *C:\Users\All Users\Repus\RepusND MagiCAD plugin software* (Windows 7) or *C:\ProgramData\Repus\RepusND MagiCAD plugin software* (Windows 8 / 10).



When you select *Load*, *Repus* toolbar and ribbon button appears on the AutoCAD.



Next time you use AutoCAD, the customization file is automatically loaded.

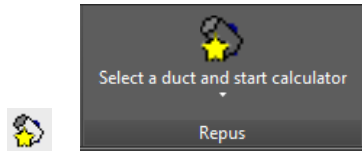
Information for network administrators:

Plugin requires connection to Repus web site. Internet Explorer control is used to browse web pages from http://www.repus.se/repus/index.php?command=open_nozzle_duct_from_magicad. Standard HTTP GET (TCP, default port 80 should be used) method is used to retrieve files from the server. GET response includes file (mime application/octet-stream). Your network firewall should allow such connections.

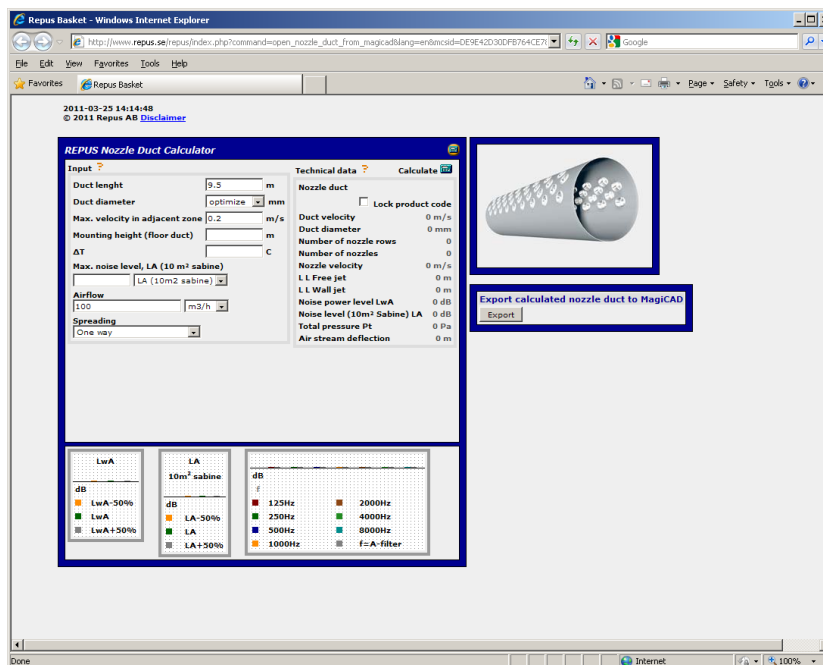
HOW TO USE THE PLUGIN

1. "Select a duct and start calculation" or "Select displacement diffuser and start calculator" commands

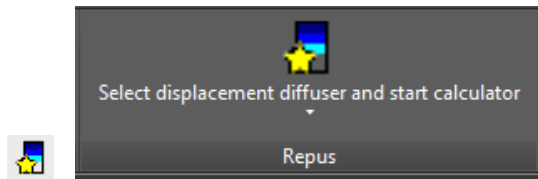
Start "Select a duct and start calculation" command from toolbar or from ribbon button.



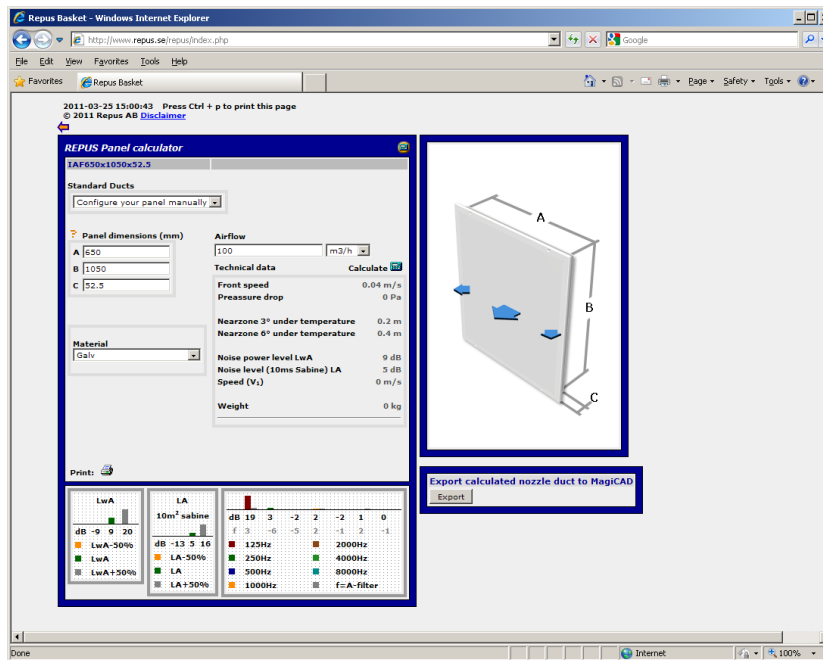
Button starts the Repus Nozzle Duct Calculator in your preferred web browser



Start " Select displacement diffuser and start calculator" command from toolbar or from ribbon button.



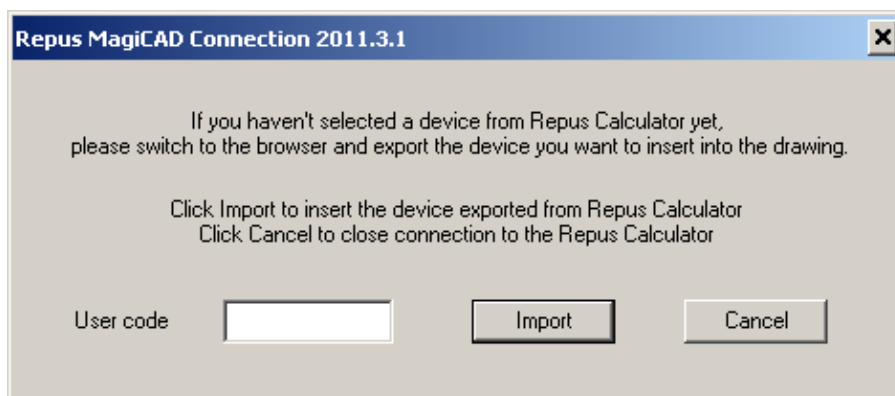
Button starts the Repus Panel Calculator in your preferred web browser



2. Calculate the nozzle duct / displacement diffuser either by adding custom values in the appropriate fields or by selecting a standard duct from the drop down box.

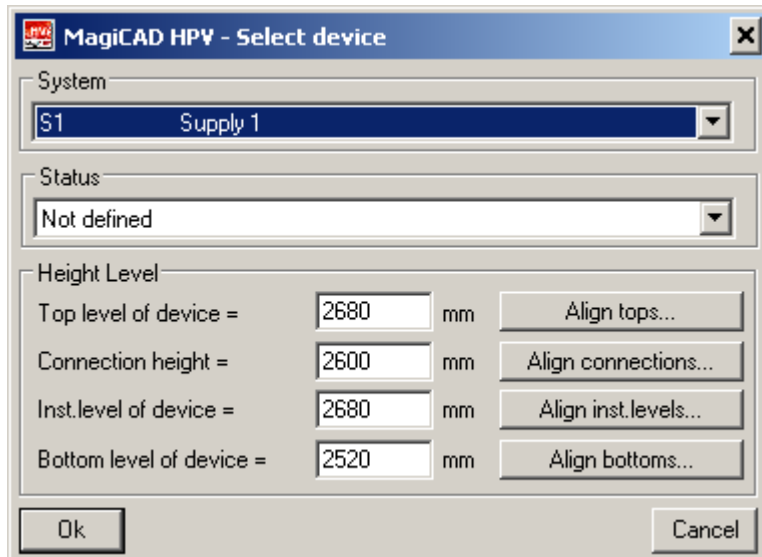
Press the Calculate button  to update technical data.

3. When you are satisfied with your product press the Export button and return to MagiCAD
4. Input the user code and press "Import".

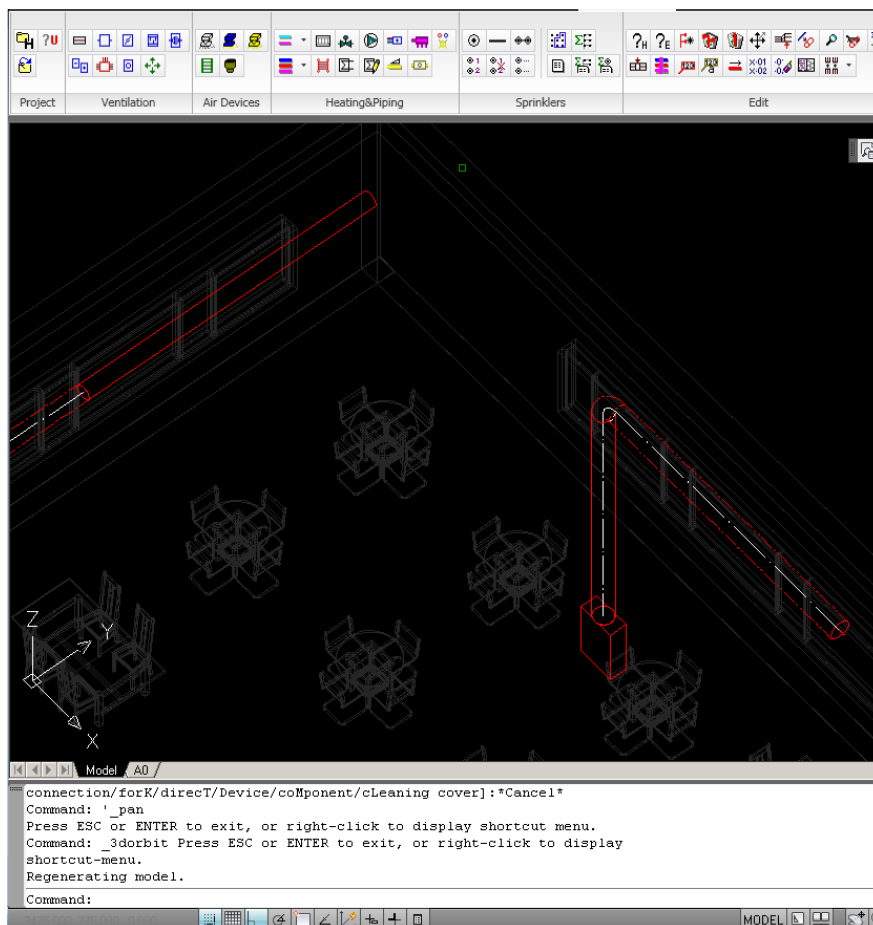


5. Show the position for the device and select the MagiCAD-system.

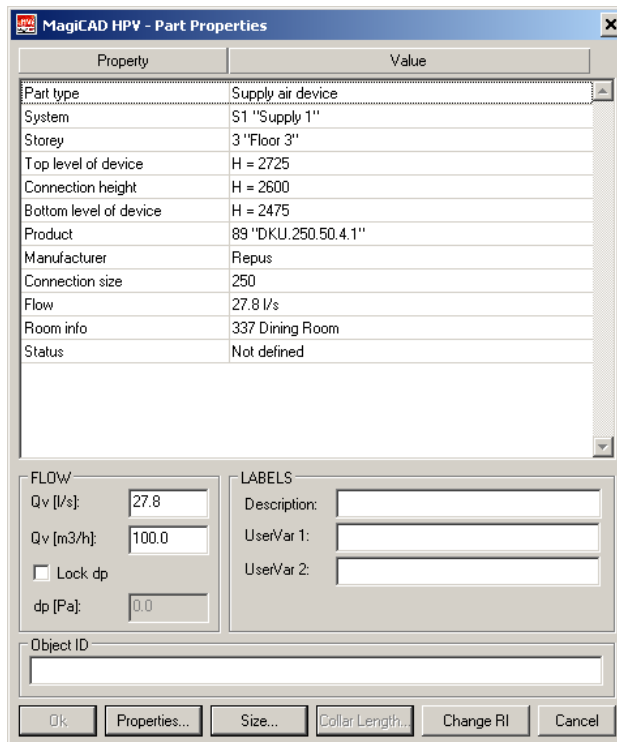
Note! You can add more similar devices. After your have added all, please press ESC.



6. Continue with MagiCAD e.g. draw the duct and connect it to the device.



MagiCAD properties window shows details for the added device



Property	Value
Part type	Supply air device
System	S1 "Supply 1"
Storey	3 "Floor 3"
Top level of device	H = 2725
Connection height	H = 2600
Bottom level of device	H = 2475
Product	89 "DKU.250.50.4.1"
Manufacturer	Repus
Connection size	250
Flow	27.8 l/s
Room info	337 Dining Room
Status	Not defined

FLOW

Qv [l/s]:

Qv [m3/h]:

Lock dp

dp [Pa]:

LABELS

Description:

UserVar 1:

UserVar 2:

Object ID:

Ok Properties... Size... Collar Length... Change RI Cancel