

Halton Revit Plugin
-
**Installation Instructions
and User Guide**

PROGMAN OY
www.progman.fi

Contents

About this document	3
Installing the software	4
Required MagiCAD version	4
Installation	4
Starting the program	5
Inserting Halton products from Halton HIT Design	6
Inserting Halton products from Product Storage	9

About this document

The purpose of Halton Revit plugin is to add Halton product to MagiCAD for Revit or Revit via Product Storage or from Halton HIT Design-program.

Halton Revit Plugin calls HaltonHIT Design software where user may select the product, calculate the device, transfer device geometry, technical data and calculation results into Revit.

Installing the software

Required MagiCAD version

Revit

- 2017, 2018, 2019

MagiCAD (optional)

- MagiCAD for Revit 2018 (with Revit 2017 and 2018)
- MagiCAD for Revit 2019 (with Revit 2017, 2018, 2019)

Installation

1. Ensure that you have required Revit version installed on your computer
2. Install Halton Revit plugin. Installation packages can be downloaded from

<https://portal.magicad.com/download/ProductSearch?searchStr=Halton&categoryId=3>

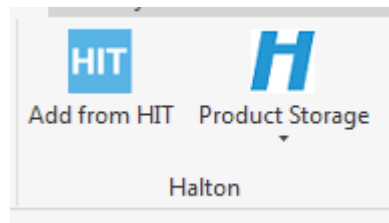
The 64-bit version of the program is installed by running the installation program

Halton Revit plugin 2018.5.1 for Revit 2017-2019 & MagiCAD.msi

Administrator privileges are recommended for installation.

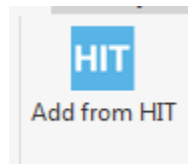
Starting the program

After running the installation, Halton panel appears in Revit *Add-Ins* – ribbon tab and user can export Halton product from Halton HIT Design or Product Storage



Inserting Halton products from Halton HIT Design

In order to add Halton product from Halton HIT Design, click Revit *Add-Ins* –ribbon tab and *Add from HIT*–button in Halton panel

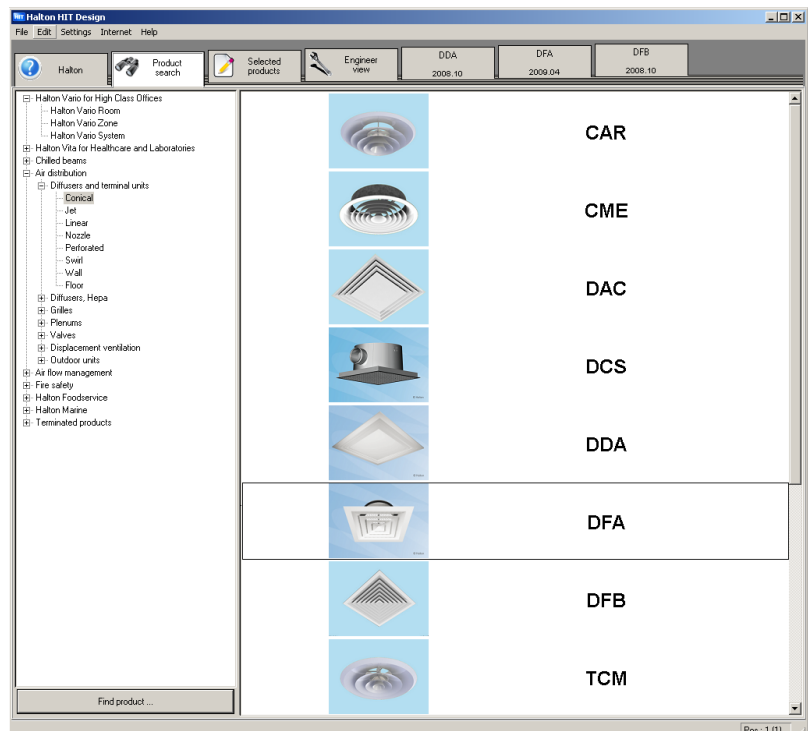


1. If product is not exported from Halton HIT Design-program, you will get this message.

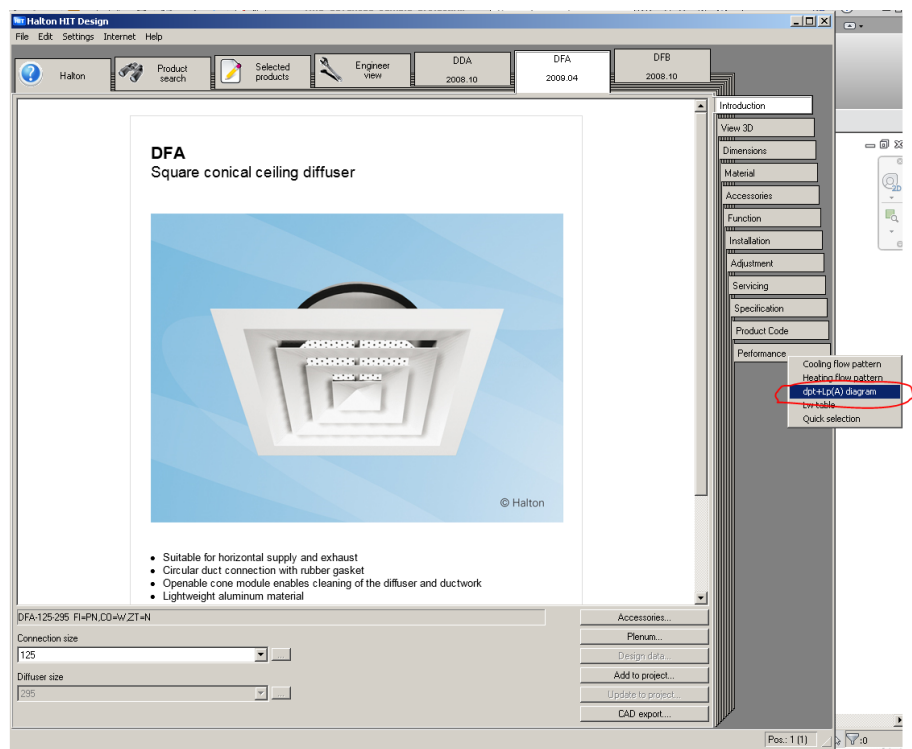


2. Download and install Halton HIT Design-program from <http://www.halton.com> and open it.
-

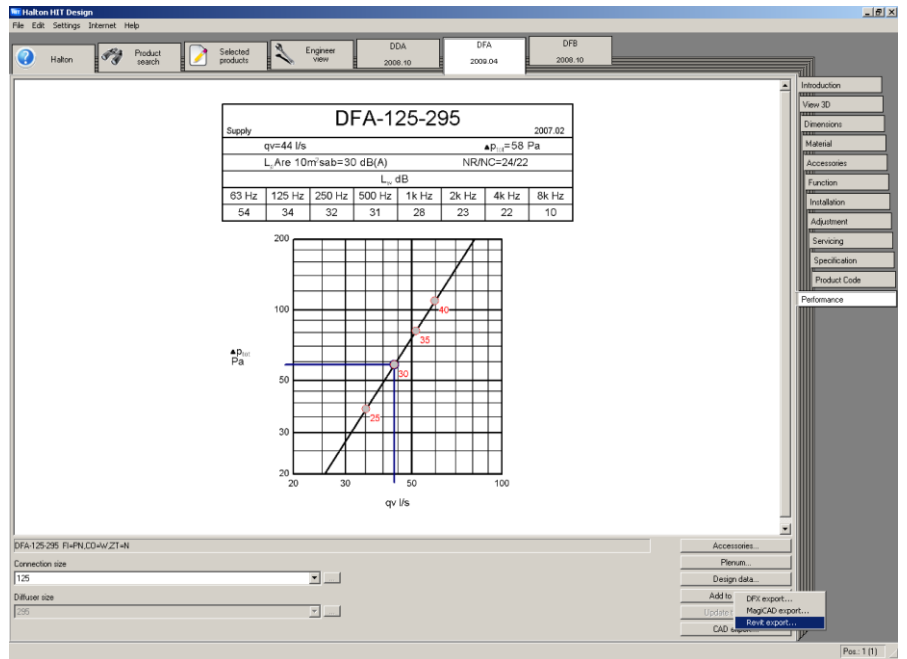
3. Select product in Halton HIT Design



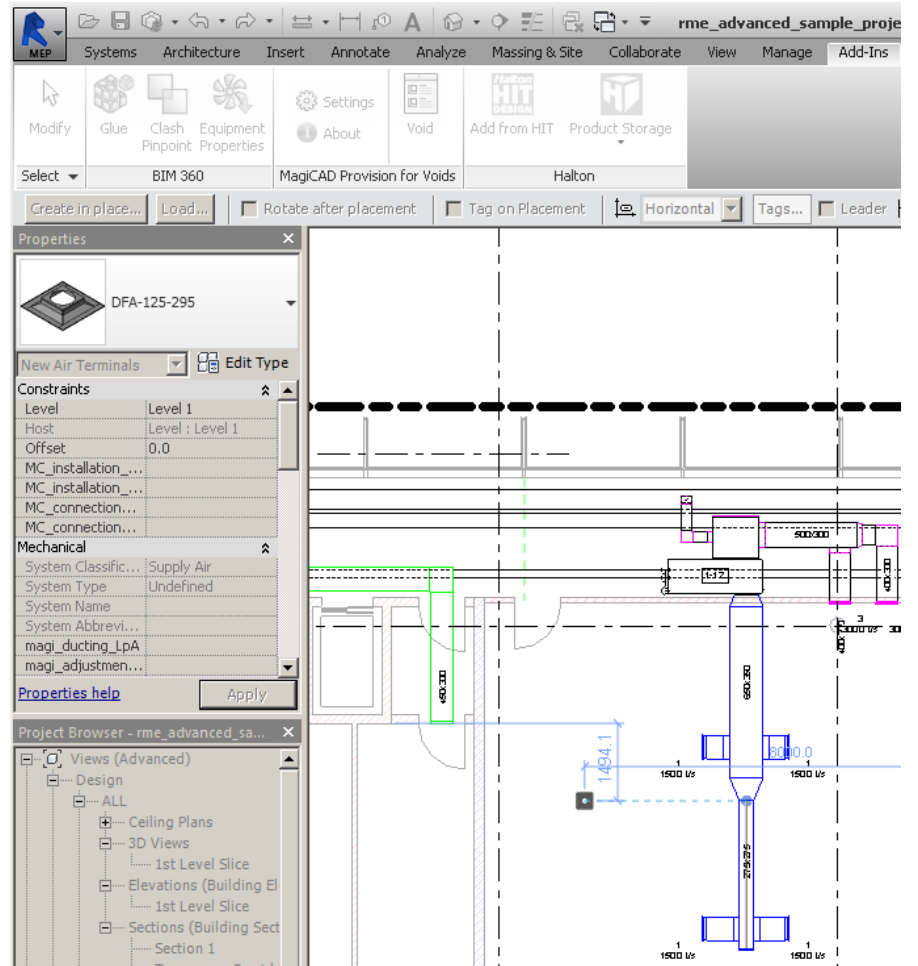
4. Product must be calculated before exporting it. Select in right hand side “Performance”-button, click left mouse button top of it and select “dpt+Lp(A) diagram”



5. Click then CAD export...-button and select Revit export...



6. Insert product to Revit

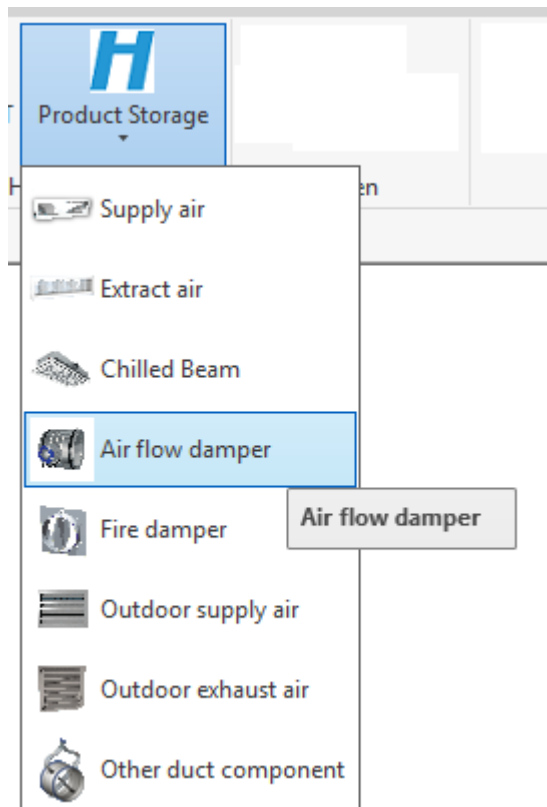


Inserting Halton products from Product Storage

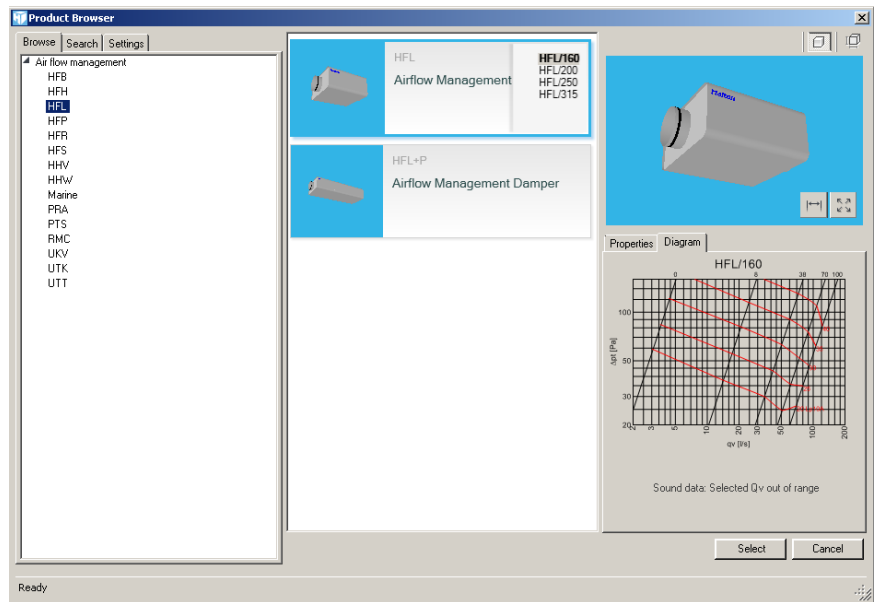
In order to add Halton product, click Revit *Add-Ins* –ribbon tab and *Product Storage* –button in Halton panel.



1. Select from Product Storage one of the product group



- With Product browser you may easily check different products size, view data and measurements. Click Select when desired device is found.



- Insert device to Revit.

