
User's Guide



Lindab Marine Insulation Template Instructions

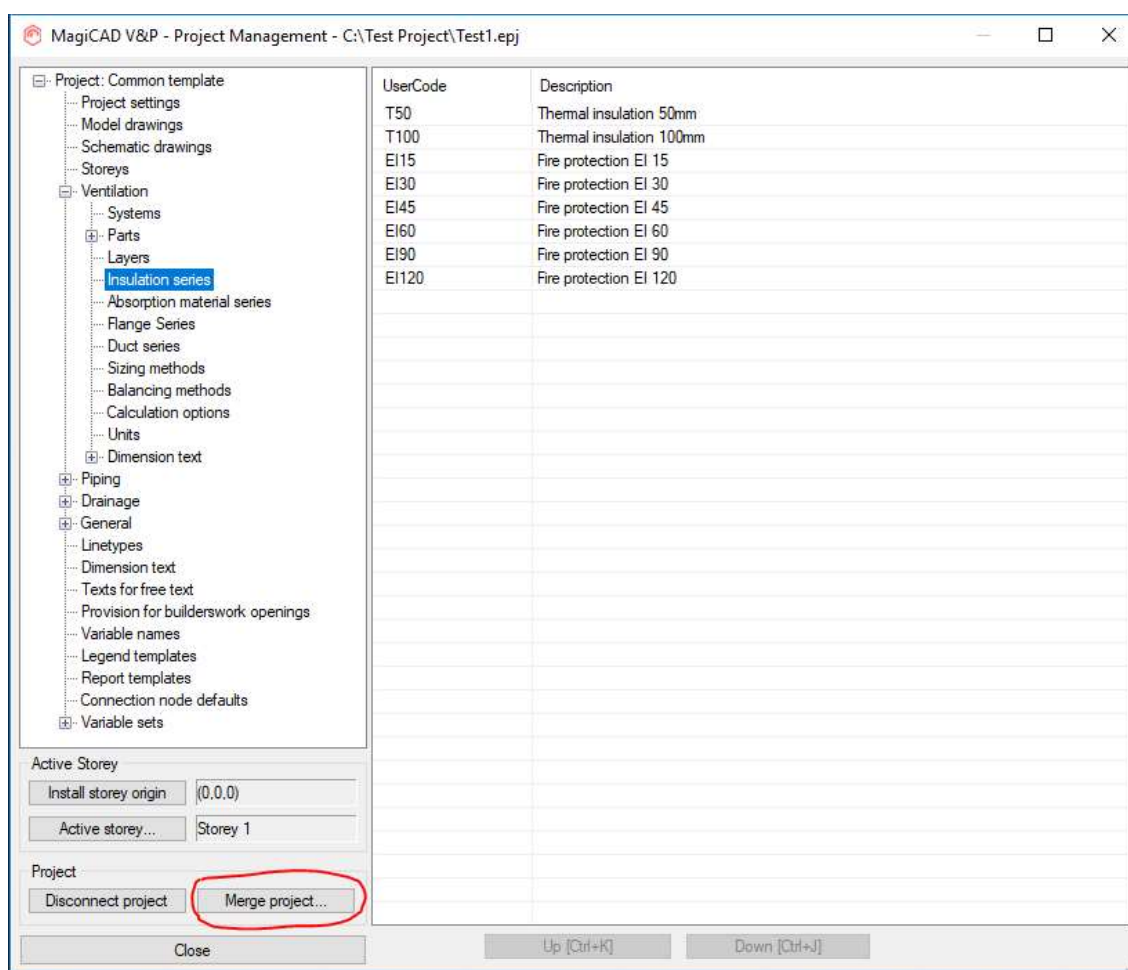
Document revision 2019-03-29

Lindab Marine Insulation template

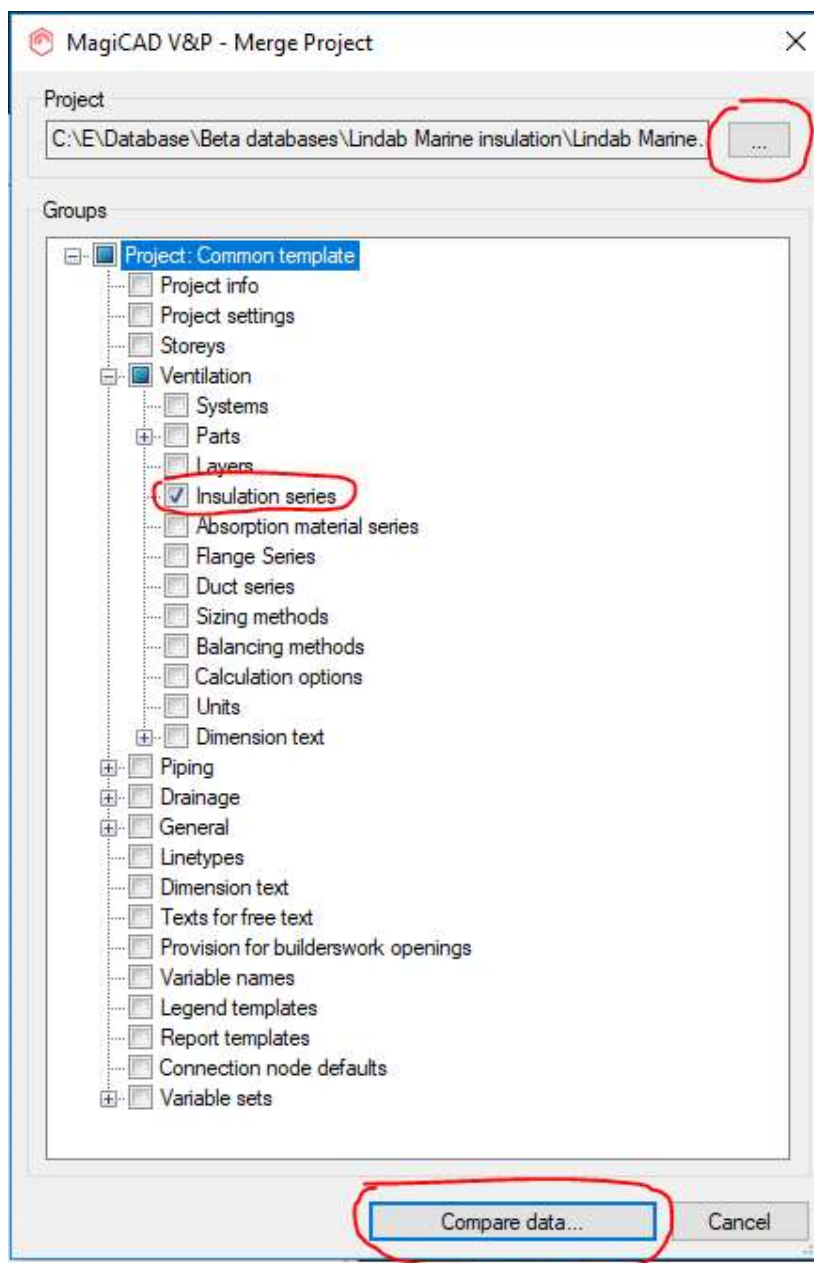
Taking the template into use

Download the .zip file to your computer. Unzip the file to a suitable location.

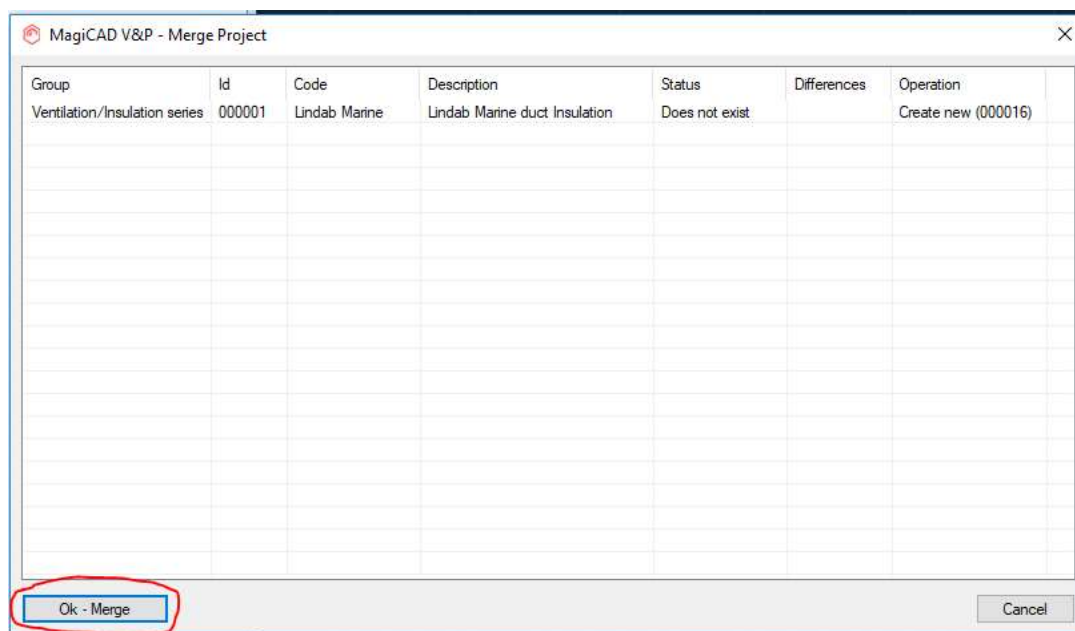
Start MagiCAD, open the project management window, and choose *Merge project...* button



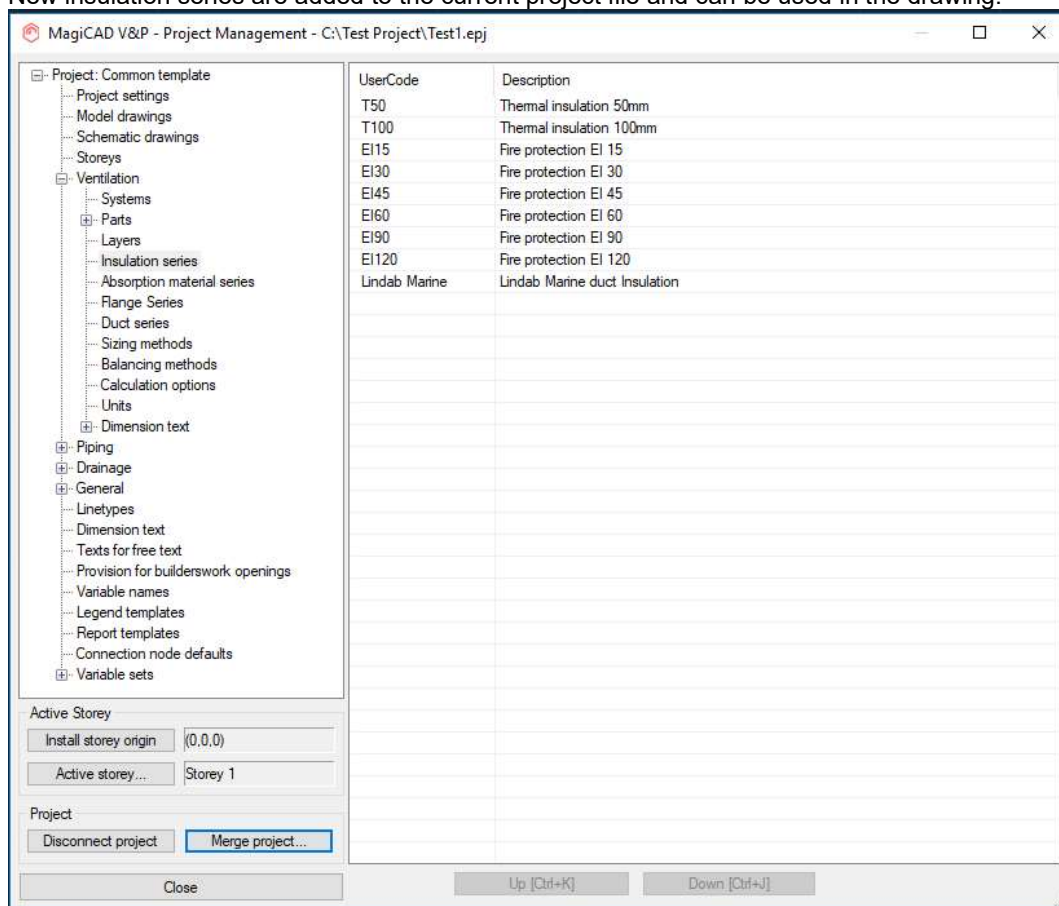
In the opened window choose the project (.EPJ file) from where you have saved it. Choose duct *Insulation series* under the Ventilation group. Choose Compare data...

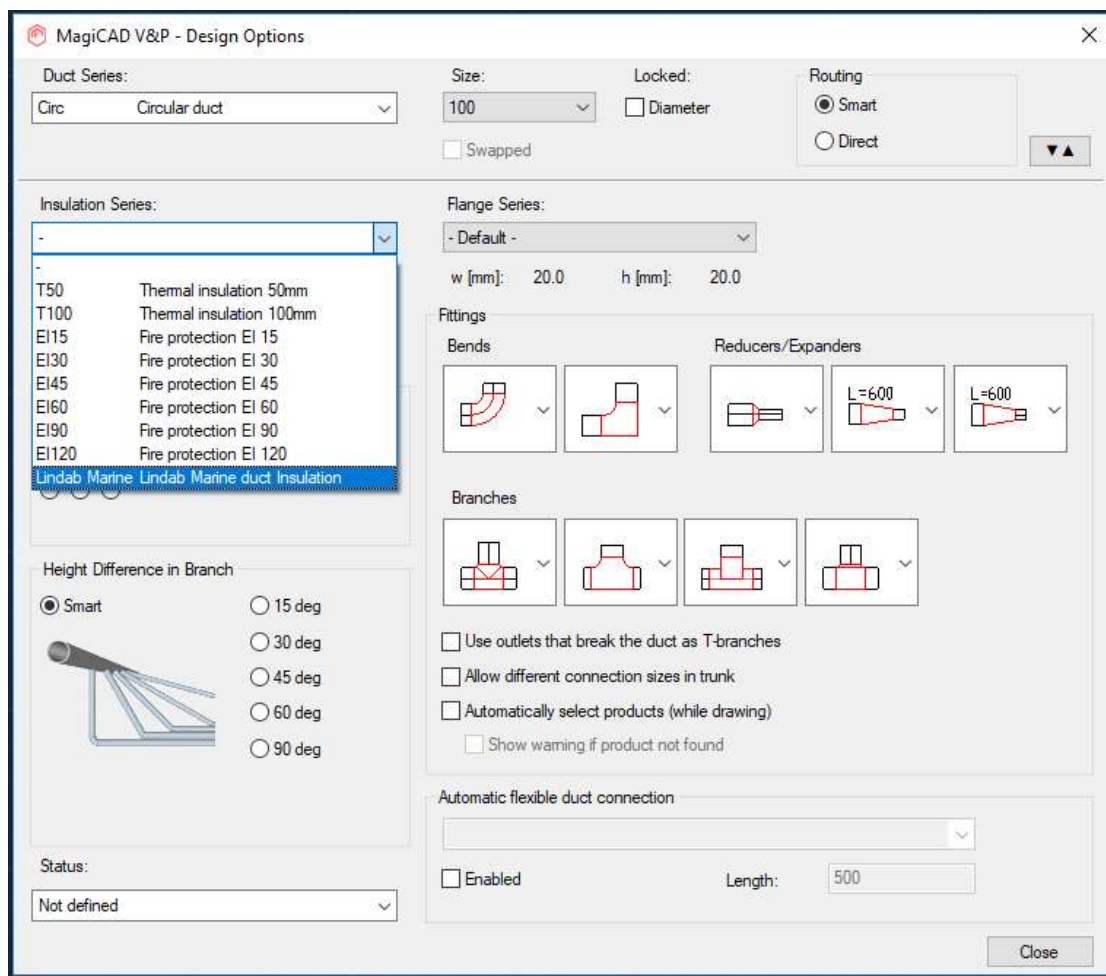


In the opened window you can see all *Insulation series* that will be added to the current project.
Choose **OK – Merge** button.



New insulation series are added to the current project file and can be used in the drawing.

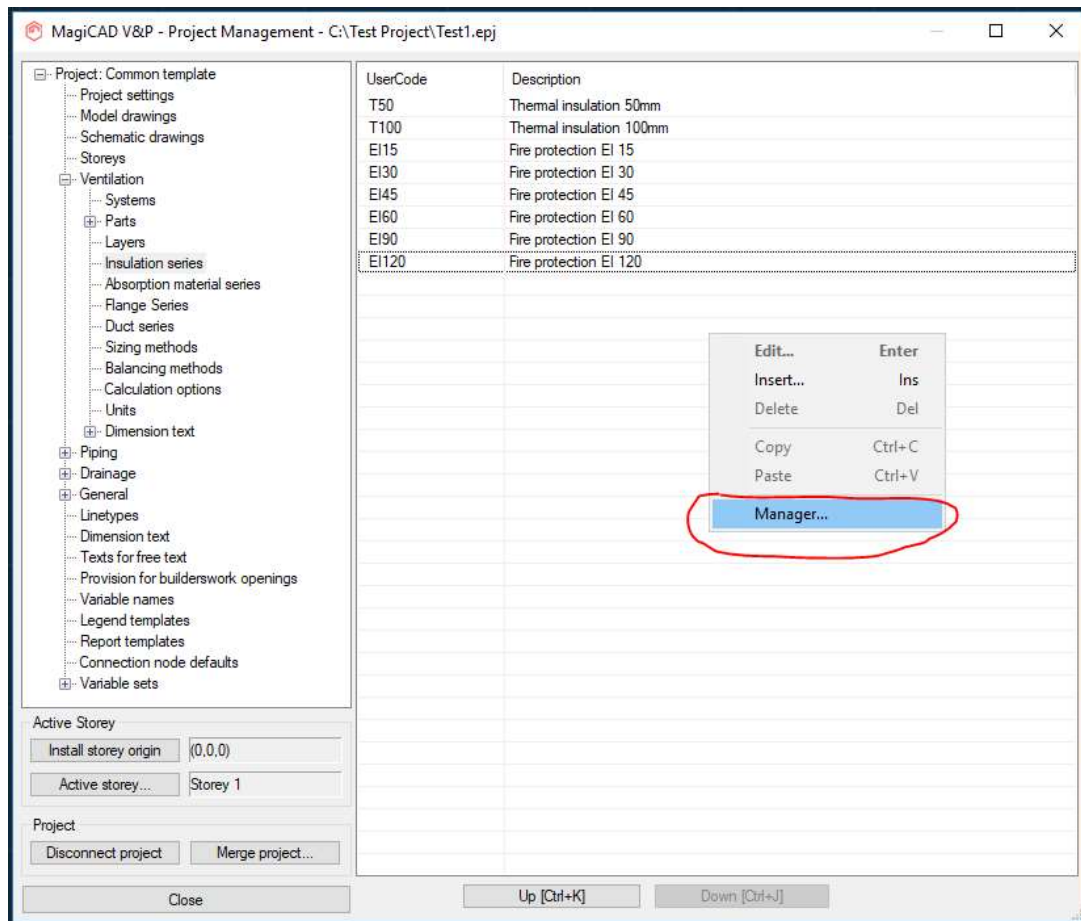




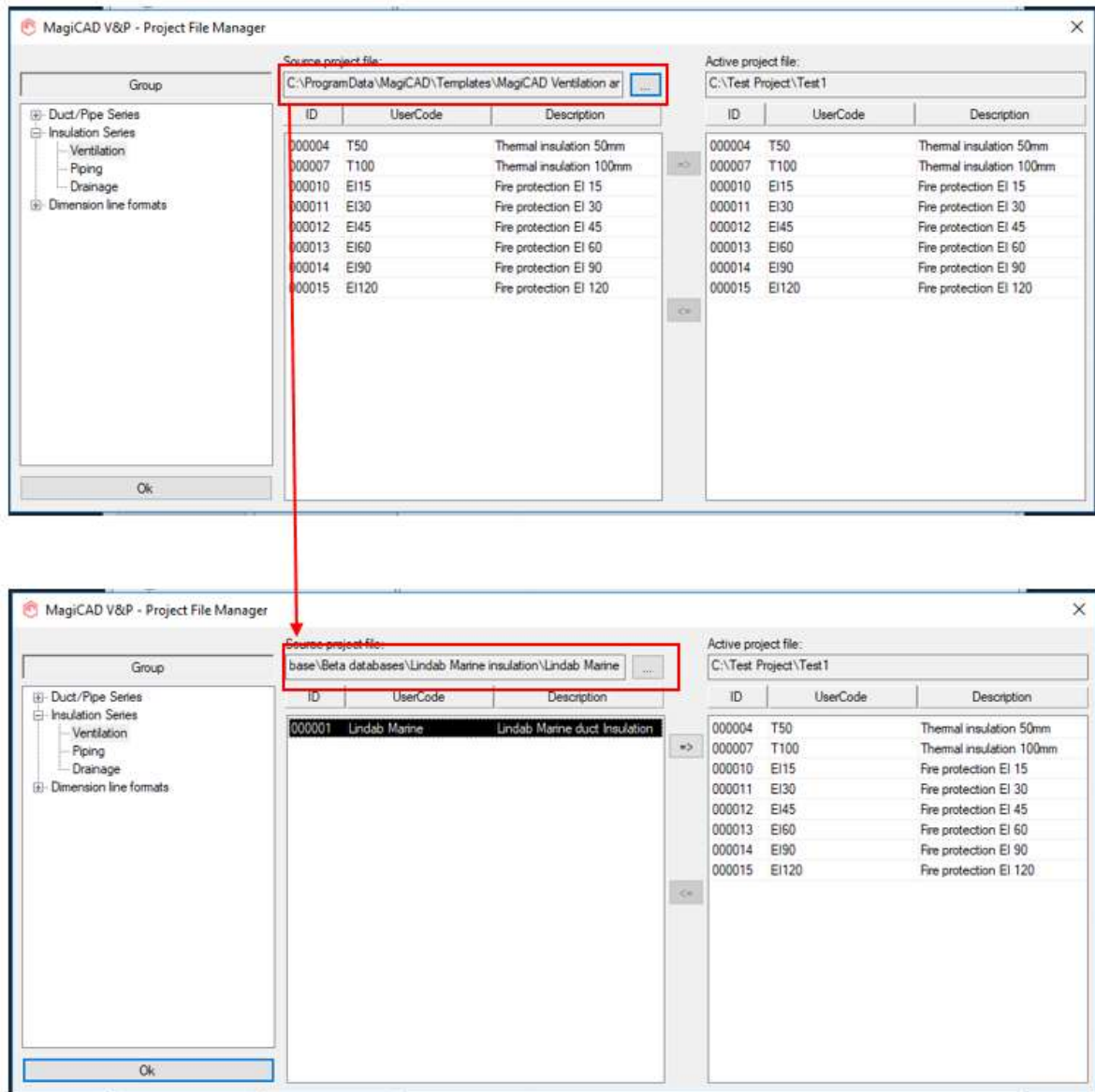
Another way to add insulation series to the project is to use *Manager...* function.

Start MagiCAD, open the project management window, and choose *Duct insulation series* from the left part of the window.

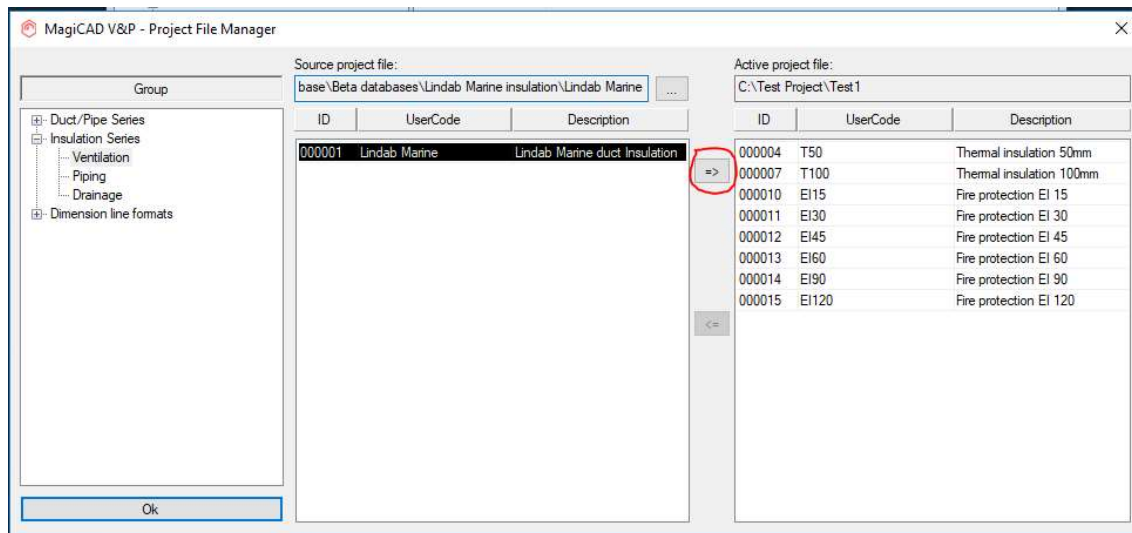
Click the right button of your mouse and choose *Manager*.



Change the source project file to Lindab Marine.EPJ.



Choose needed insulation series (or all) and add it to your project file.



New duct insulation series are added to the current project file and can be used in the drawing.

