

# MagiCAD 2020 Network License Server Update

**Customers with existing MagiCAD Network Licenses must update their network license server to version 19.05 or later before installing MagiCAD 2020 for AutoCAD or Revit.**

## What are the benefits of the new network license server version?

From MagiCAD 2020 and network license server version 19.05 onwards **MagiCAD licenses can be maintained on the same work server as Autodesk Revit or AutoCAD licenses**. This is beneficial for future updates as it simplifies considerably the update process. Previously, customers needed to maintain MagiCAD licenses on a separate server, which made updating more complicated.

From a technical standpoint, the new license server version employs Internet Protocol version 6 (IPv6), which enables having MagiCAD and AutoDesk Revit or AutoCAD licenses on the same server. Previously, this could be done but it required extensive configuration work and firewall adjustments and could still occasionally lead to conflicts where connection to the server was lost.

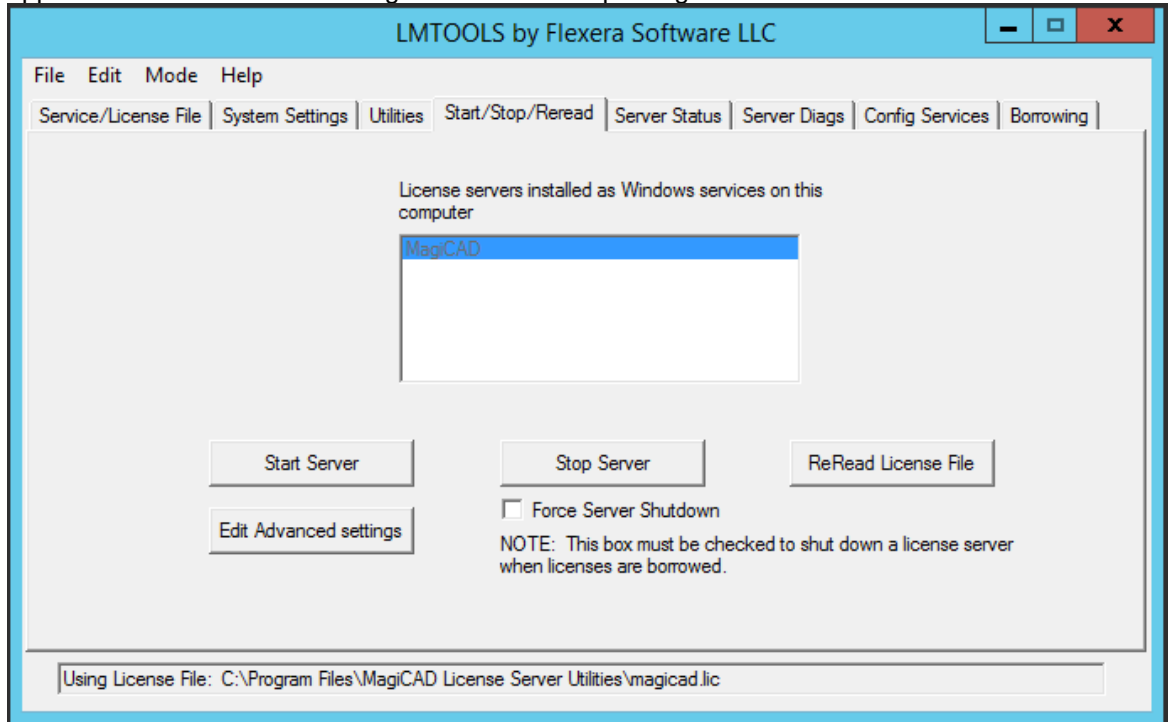
A second improvement with the new license server version is **increased stability with Windows 2016 servers**. The current server software has stability issues in Windows 2016 server environments and may sometimes perform unnecessary and repeated reboots.

The third major improvement is **easier monitoring of license use**. When licenses are borrowed from the server, the new version adds both the computer name and user name to the license log, whereas previously only the computer name was used. Including the user name makes it much easier for companies to identify where their licenses have been used





## How to update the MagiCAD license server software

### Stop MagiCAD license server and services

1. Before updating, use **Imtools.exe** to stop the MagiCAD license server. The Imtools.exe application is included in the MagiCAD installation package.



2. Open **Windows Services** and stop the **MagiCAD License Information Service**

 Local Session Manager	Core Windo...	Running	Automatic	Local System...
 MagiCAD	MagiCAD li...		Automatic	Local System...
 MagiCAD License Information Service	This service ...	Running	Automatic	Local System...
 Microsoft iSCSI Initiator Service	Manages In...		Manual	Local System...

3. Close **Imtools.exe** and the **MagiCAD Network License Server Management Utility**. If you have custom settings in the **magicad.lic** or **magicad.opt** files, make backups of those settings before updating.

### Install new version of license server software

4. Download **MagiCAD License Server Utilities version 19.05 or later** from the MagiCAD Portal using your MagiCAD activation ID.  
<https://portal.magicad.com/Download/ProductSearch?searchStr=utilities&categoryId=6>
5. Extract the downloaded file and execute **MagiCAD License Server Utilities x64.msi** and then follow the installer instructions.  
 If you had custom settings in the **magicad.lic** or **magicad.opt** files use **Imtools.exe** to stop the MagiCAD license server before you restore your custom settings.

### Restart license service and reload licenses

6. After the installation is finished use **Imtools.exe** to stop and start **MagiCAD License Server** to reload licenses.

## Use scenarios

The table below shows which license server versions and combinations can be used with different MagiCAD versions

MagiCAD software	MagiCAD network license server(s) used	Possible combination
MagiCAD 2020	Single server, v. 19.05 or later	<b>Yes</b>
MagiCAD 2020	Single server, v. 15.11 or earlier	<b>No</b>
MagiCAD 2019 UR-2 or earlier	Single server, v. 19.05 or later	<b>Yes</b>
MagiCAD 2020	Multiple servers, v. 19.05 or later in all	<b>Yes</b>
MagiCAD 2020	Multiple servers, including: v. 19.05 or later and v. 15.11 or earlier	<b>Yes</b> , but not recommended (possibly slower performance)
MagiCAD 2019 UR-2 or earlier	Multiple servers, v. 19.05 or later in all	<b>Yes</b>
MagiCAD 2019 UR-2 or earlier	Multiple servers, including: v. 19.05 or later and v. 15.11 or earlier	<b>Yes</b> , but not recommended (possibly slower performance)

### New MagiCAD 2020 installations

Install MagiCAD license server software version 19.05 or later during the MagiCAD 2020 for AutoCAD or Revit installation. Use the activation ID that was delivered together with MagiCAD 2020, or the activation ID of a valid subscription license.

### **Updating from MagiCAD 2019 UR-2 or earlier to MagiCAD 2020**

To update to MagiCAD 2020, you need to update the MagiCAD license server software to version 19.05 or later before installing MagiCAD 2020 for AutoCAD or Revit. Use the activation ID that was delivered together with MagiCAD 2020, or the activation ID of a valid subscription license, and see the update instructions above.

### **Using MagiCAD 2019 or older and MagiCAD license server 19.05 or later**

The new license server software is downward compatible and can be used with MagiCAD 2019 or older. You can simply update the license server software according to the instructions above and continue using an older version of MagiCAD software. To update the license server you need either a new activation ID or a valid subscription license activation ID for the server.

### **Distributed server model**

It is possible to use a distributed server model with two network license servers. In this setup, MagiCAD will start by searching for free licenses from the first server and if none are found then continue searching from the second server.

Using two network license servers requires that you enter two server addresses in the MagiCAD Network License Server Management Utility.

Ex. port@newServer;port@oldServer

We recommend updating both servers to MagiCAD license server software version 19.05 or later. You can also use different license server software versions, however, this may result in slightly slower license operations.

### **Using a mixed environment with new and old license server software**

This is possible, but not recommended as this may result in slightly slower license operations. However, you can employ two different license server versions, for example if you need to maintain an older license server for external software. You need to simply install the desired license server software versions with their own activation IDs.

## **Change to network license checkouts**

The new license server version also includes a change to network license checkouts and automatic license returns due to idle time.

When using MagiCAD, the periods of time when the user uses native Revit functions without activating any MagiCAD tools are counted as idle time for the MagiCAD license. The previous practice was that the MagiCAD license was automatically freed to the license pool after 15 minutes of idle time. In some cases, this could cause situations where the license was returned to the license pool in the background and then checked out by another user, rendering the license unavailable to the original user and blocking the user from completing their work.

To prevent interruptions in design work due to license unavailability, we have changed the idle time limit for the automatic license return from 15 minutes to 2 hours. If the user wants to intentionally return the license to the license pool earlier, this can be done at any time by simply ending the Revit or AutoCAD session (i.e. by closing the software). MagiCAD's idle time settings are fixed and the system administrator does not have access to them.

In case of multiple license types on the same server the license reservation will check out the more "minor" licenses first when applicable. For example, if a user is working with MagiCAD for AutoCAD and the license server has both MagiCAD for AutoCAD and MagiCAD Suite licenses, then the system will not assign a MagiCAD Suite license if MagiCAD for AutoCAD licenses are still available.