



# **Crenna MagiCAD plugin**

User guide

18/04/2019

## Content

<b>GENERAL .....</b>	<b>3</b>
About this document.....	3
Installing the software.....	3
Required third-party software .....	3
Installation.....	3
Starting the program.....	4
<b>FUNCTIONS.....</b>	<b>5</b>
Crenna toolbar.....	5

## General

### About this document

This document contains instructions for using *Crenna MagiCAD plugin*. With Crenna MagiCAD plugin you can easily select silencer from various types of silencers and export them into MagiCAD project and drawing.

## Installing the software

### Required third-party software

Crenna MagiCAD plugin works with the following MagiCAD for AutoCAD versions

- MagiCAD 2019 and AutoCAD 2015-2019
- MagiCAD 2020 and AutoCAD 2015-2020

## Installation

1. Download setup file from  
<https://portal.magicad.com/Download/ProductSearch?searchStr=Crenna&categoryId=3>
2. Run the Crenna MagiCAD plug-in installer on your workstation.

Administrator privileges are recommended for installation.

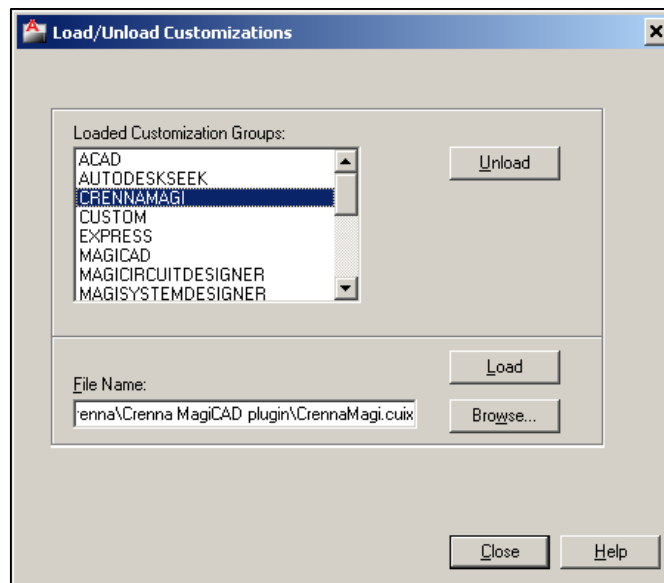
### **Note if you have several AutoCAD versions on your workstation:**

Before you run the installation program, start MagiCAD to make sure that *Crenna MagiCAD Plugin* installs on the same AutoCAD platform as MagiCAD.

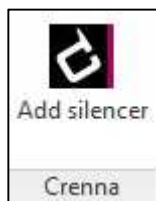
## Starting the program

Before you start using *Crenna MagiCAD Plugin*, start MagiCAD and open a Ventilation project.

If the plugin is not loaded automatically after setup, run the **CULOAD** (or **MENULOAD**) in AutoCAD, and browse the customization file from the directory where you installed the program (by default, the directory is *C:\Program Files\Crenna*). When you first time start using *Crenna MagiCAD Plugin*, you need to load the customization file (*CrennaMagi.cuix*) manually.



When you click Load, Crenna toolbar and ribbon panel button appears on the AutoCAD.



Next time you use the AutoCAD, the customization file is automatically loaded.

### **Information for network administrators:**

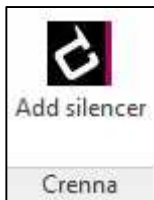
*Plugin requires a connection to Crenna web site. Internet Explorer control is used to browse web pages from crenna.se.*

*Standard HTTP GET (TCP, default port 80 should be used) method is used to retrieve files from the server. GET response includes file (mime application/octet-stream). Your network firewall should allow such connections.*

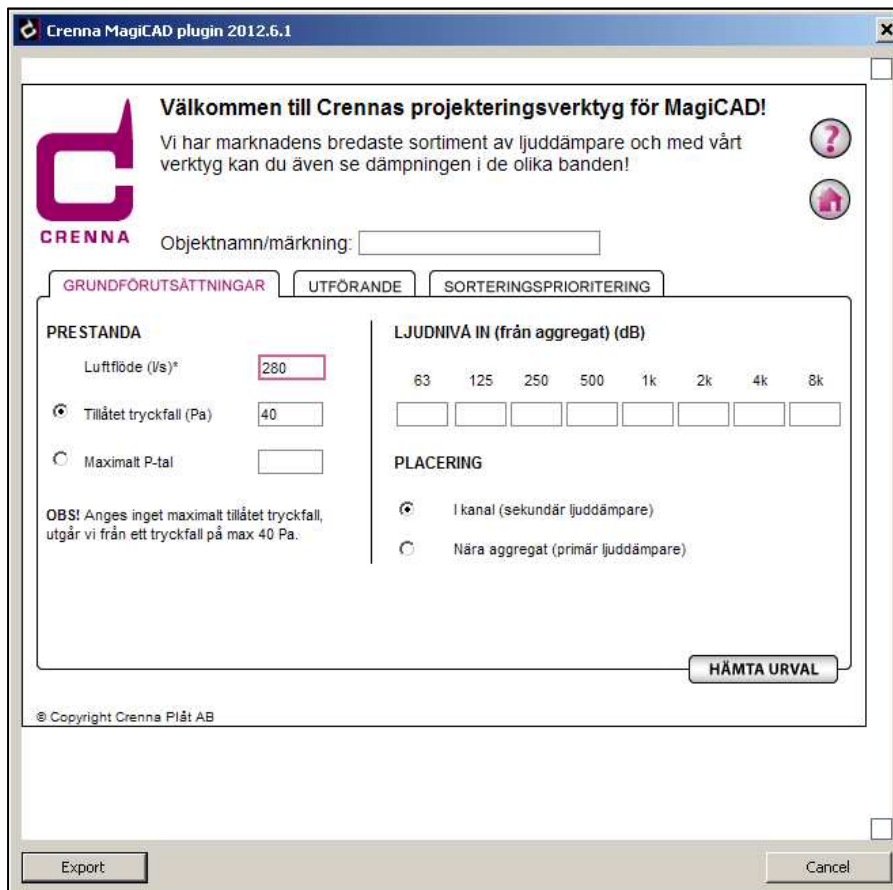
## Functions

### Crenna toolbar

Start Crenna MagiCAD plugin by clicking button.



Select duct and Crenna selection software will open. Airflow and duct size are imported from MagiCAD.



**Crenna MagiCAD plugin 2012.6.1**

**Välkommen till Crennas projekteringsverktyg för MagiCAD!**  
 Vi har marknadens bredaste sortiment av ljuddämpare och med vårt verktyg kan du även se dämpningen i de olika banden!

Objektnamn/märkning:

GRUNDFÖRUTSÄTTNINGAR | UTFÖRANDE | SORTERINGSPRIORITERING

**PRESTANDA**

Luftflöde (l/s)\*

Tillåtet tryckfall (Pa)

Maximalt P-tal

OBS! Anges inget maximalt tillåtet tryckfall, utgår vi från ett tryckfall på max 40 Pa.

**LJUDNIVA IN (från aggregat) (dB)**

63 125 250 500 1k 2k 4k 8k

**PLACERING**

I kanal (sekundär ljuddämpare)

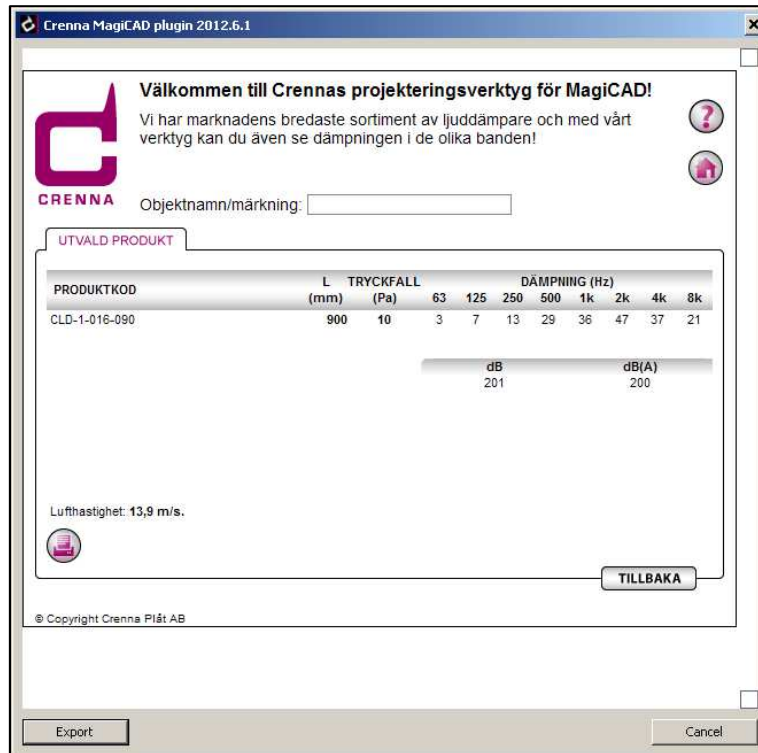
Nära aggregat (primär ljuddämpare)

HÄMTA URVAL

© Copyright Crenna Plåt AB

Export Cancel

Select product and export it to MagiCAD by clicking Export button.



Place the product in to the drawing and continue designing in MagiCAD.

