



Exhausto Revit Plugin

User guide

08/05/2019

Content

GENERAL	3
About this document.....	3
Installing the software	3
Required third-party software	3
Registration	3
Installation.....	3
ADDING UNIT TO REVIT FROM EXSELECT PROGRAM.....	4
ADDING UNIT TO REVIT FROM A LOCAL FILE.....	7

GENERAL

About this document

This document contains instructions on using Exhausto Revit Plugin.

The purpose of the plugin is to add Exhausto air handling units selected with EXselect dimensioning program and export into MagiCAD for Revit or Revit project and drawing.

Installing the software

Required third-party software

Revit

- Revit 2017, 2018, 2019 and 2020

MagiCAD (optional)

- MagiCAD for Revit 2019 (with Revit 2017, 2018, 2019)
- MagiCAD for Revit 2020 (with Revit 2018, 2019, 2020)

Registration

Before installing Exhausto plugin, user must be registered as EXselect user. Registration can be done by following the instructions at Exhausto website

<http://xselect.exhausto.dk/selector/index.jsp?language=en&country=EX>

Your EXselect password must be given when installing.

Installation

Administrator privileges are recommended for installations.

Installation packages can be downloaded from

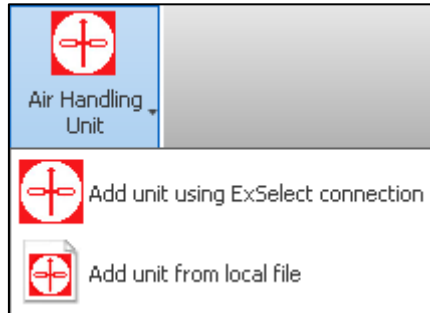
<https://portal.magicad.com/download/ProductSearch?searchStr=exhausto&categoryId=3>

Information for network administrators:

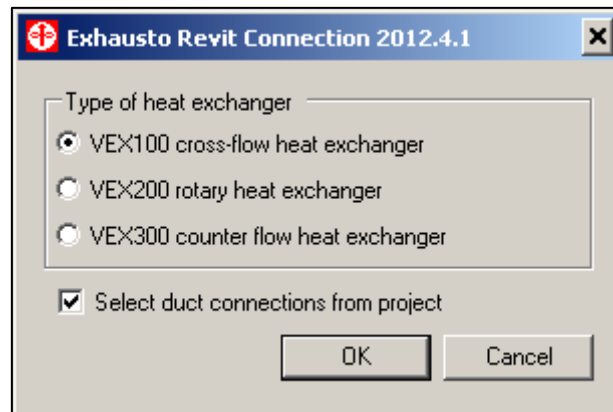
Plugin requires connection to Exhausto web site. Internet Explorer control is used to browse web pages from <http://xselect.exhausto.dk/selector/>. Standard HTTP GET (TCP, default port 80 should be used) method is used to retrieve files from the server. GET response includes file (mime application/octet-stream). Your network firewall should allow such connections (plugin runs inside Revit process).

Adding unit to Revit from EXselect program

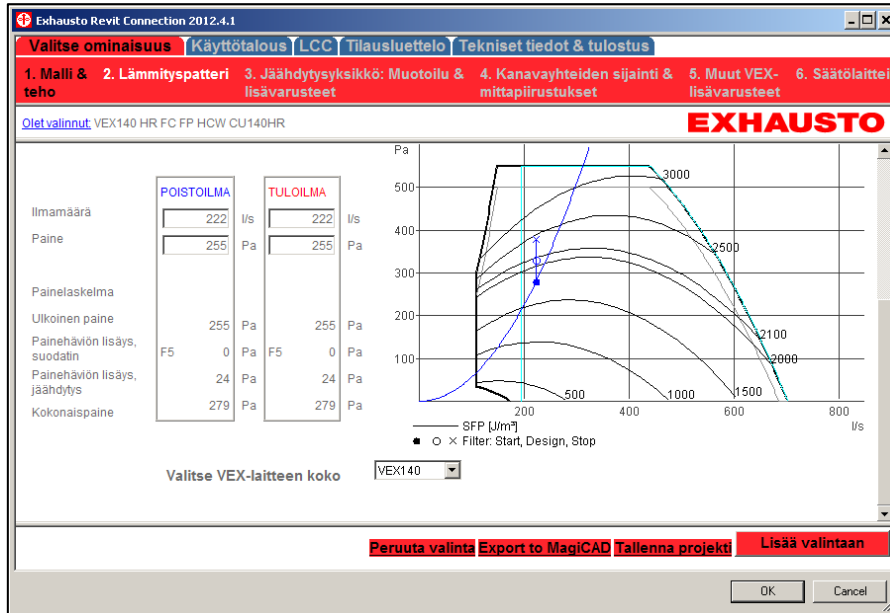
1. Click *Add-ins* ribbon tab and *Air Handling Unit* button and then click *Add unit using ExSelect plugin*



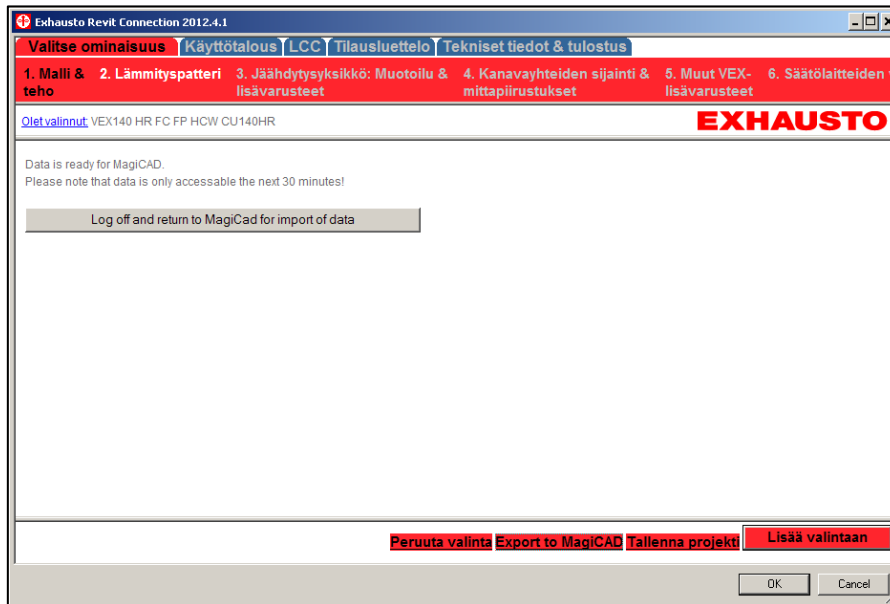
2. Select unit type to be imported from EXselect program. Cross "Select duct connection from project" if you want to export flow and pressure drop values to program.



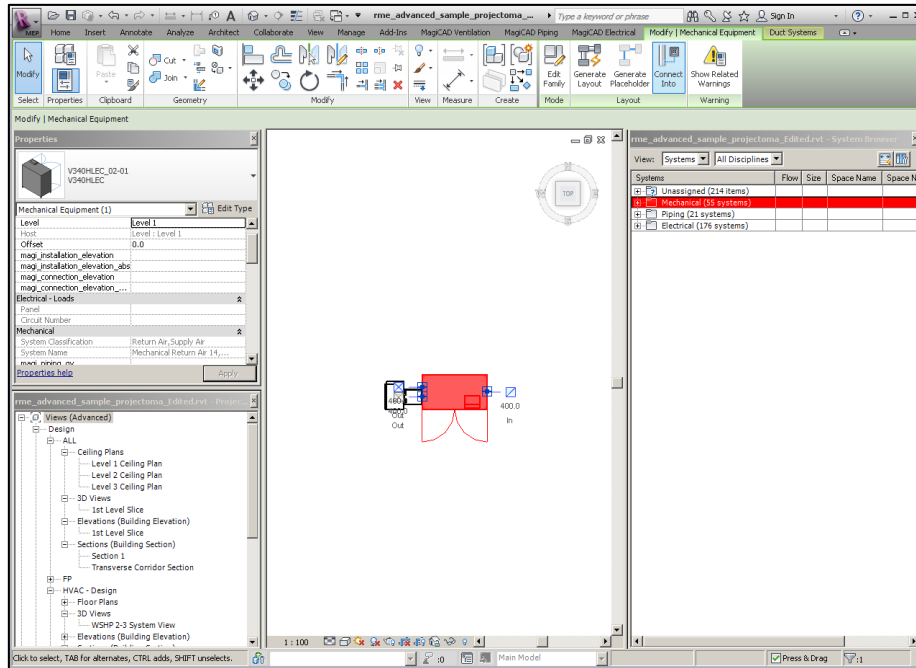
3. Make selections in EXselect program and then click “Export to MagiCAD”-button.



In this dialog click just “Ok”-button to export unit to Revit.



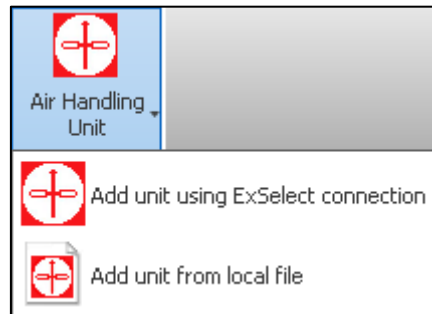
- Unit is placed to Mechanical Equipment-group in Revit. You can see unit information when you click Edit type in Properties dialog. Now you can continue working with MagiCAD for Revit / Revit.



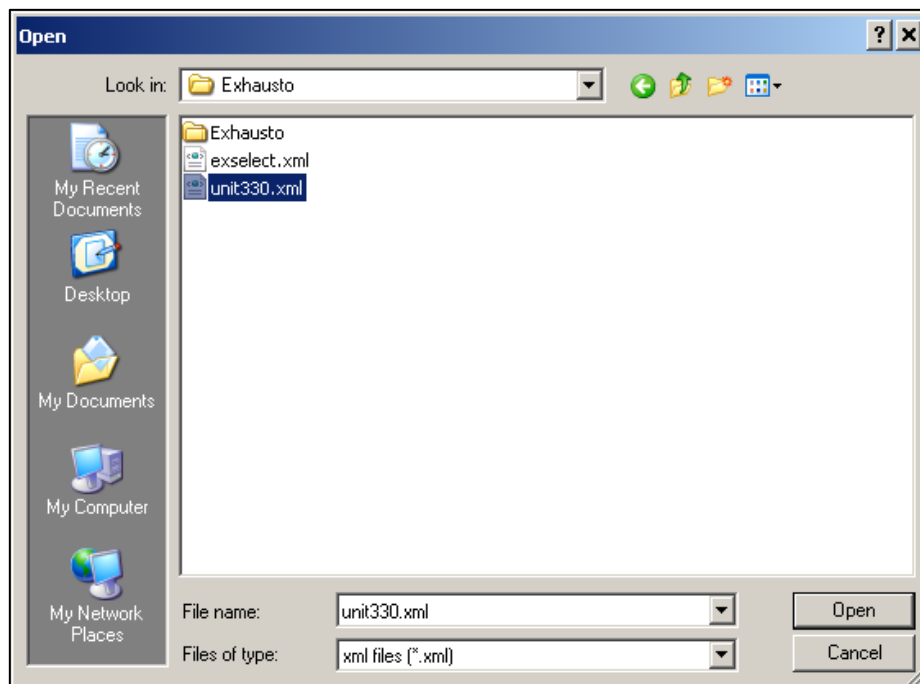
Adding unit to Revit from a local file

This functionality assumes that xml –file generated with EXselect already exists.

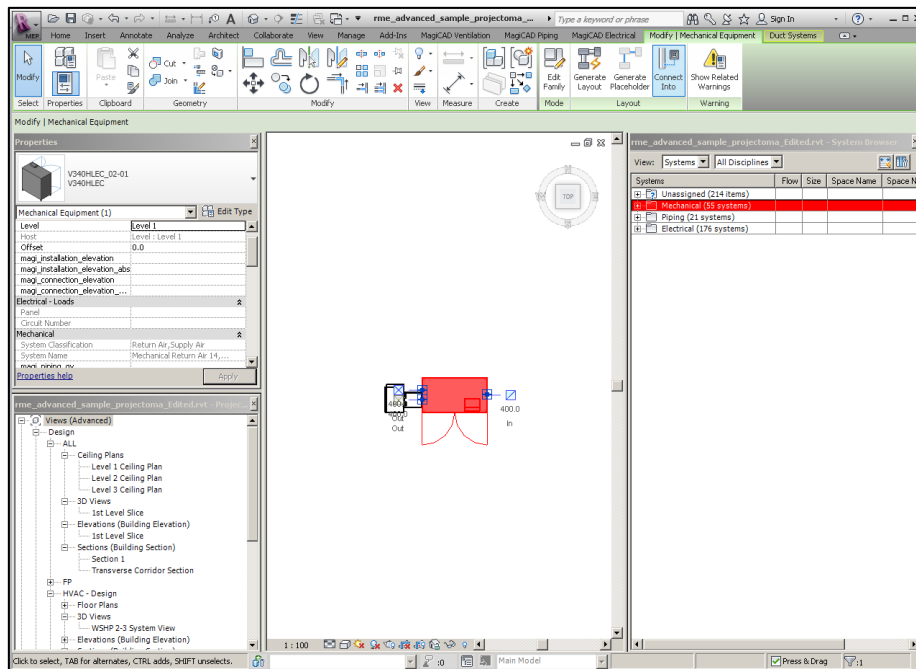
1. Click Add-ins ribbon tab and Air Handling Unit-button and then click Add unit from local file



2. Select .xml-file to be imported to Revit



- Unit is placed to Mechanical Equipment-group in Revit. You can see unit information when you click Edit type in Properties dialog. Now you can continue working with MagiCAD for Revit / Revit.



Unit is placed to Revit and its Properties dialog is opened.