



FläktGroup Revit Plugin

User guide

03/05/2019

Content

ABOUT THIS DOCUMENT	3
INSTALLING THE SOFTWARE	3
Required Revit / MagiCAD version.....	3
Installation.....	3
STARTING THE PROGRAM	4
INSERTING FLÄKTGROUP PRODUCTS FROM EXSELAIR	4
INSERTING FLÄKTGROUP PRODUCTS FROM ACON	10

About this document

The purpose of FläktGroup Revit plugin is to use SELECT or Acon directly from MagiCAD for Revit or Revit as a product configurator when adding FläktGroup products into project.

FläktGroup Revit Plugin calls FläktGroup selection software (SELECT/Acon) with input parameters to calculate the device, transfer device geometry, technical data and calculation results from SELECT/Acon into Revit.

Installing the software

Required Revit / MagiCAD version

Revit

- Revit 2017, 2018, 2019 and 2020

MagiCAD (optional)

- MagiCAD for Revit 2019 (with Revit 2017, 2018, 2019)
- MagiCAD for Revit 2020 (with Revit 2018, 2019, 2020)

Installation

1. Ensure that you have required Revit version installed on your computer
2. Install FläktGroup Revit plugin. Installation package can be downloaded from

<https://portal.magicad.com/download/ProductSearch?searchStr=Fläkt&categoryId=3>

The 64-bit version of the program is installed by running the installation program.
Administrator privileges are recommended for installation.

Information for network administrators:

Plugin requires connection to FläktGroup web site. Internet Explorer control is used to browse to the web page. Standard HTTP GET (TCP, default port 80 should be used) method is used to retrieve files from the server. GET response includes file (mime application/octet-stream). Your network firewall should allow such connections.

Starting the program

After running the installation, FläktGroup panel appears in Revit Add-Ins ribbon tab and user can select which type of product to export.

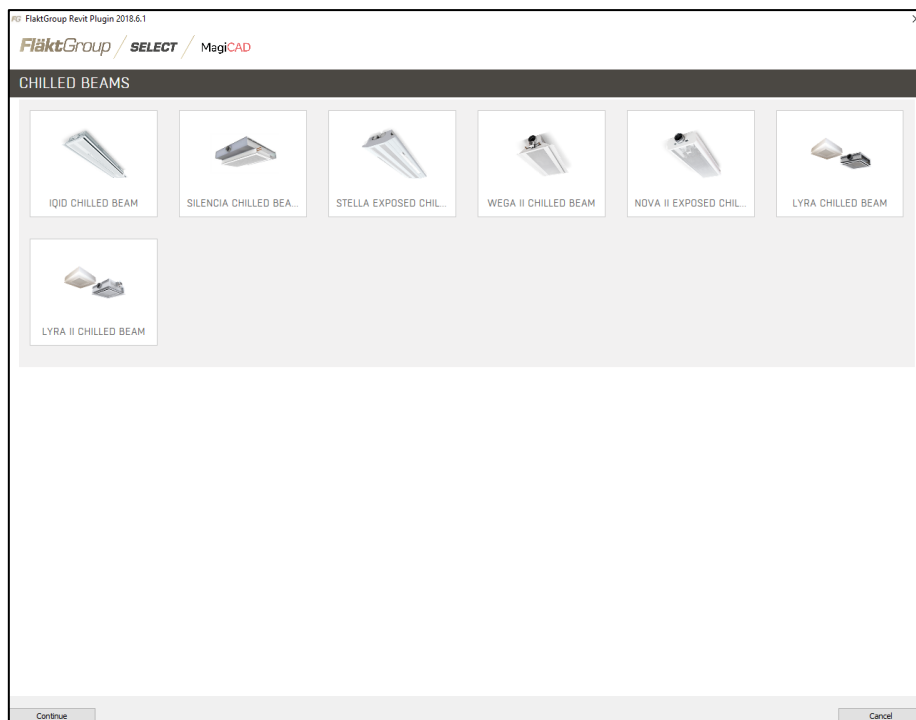


Inserting FläktGroup products from ExSelAir

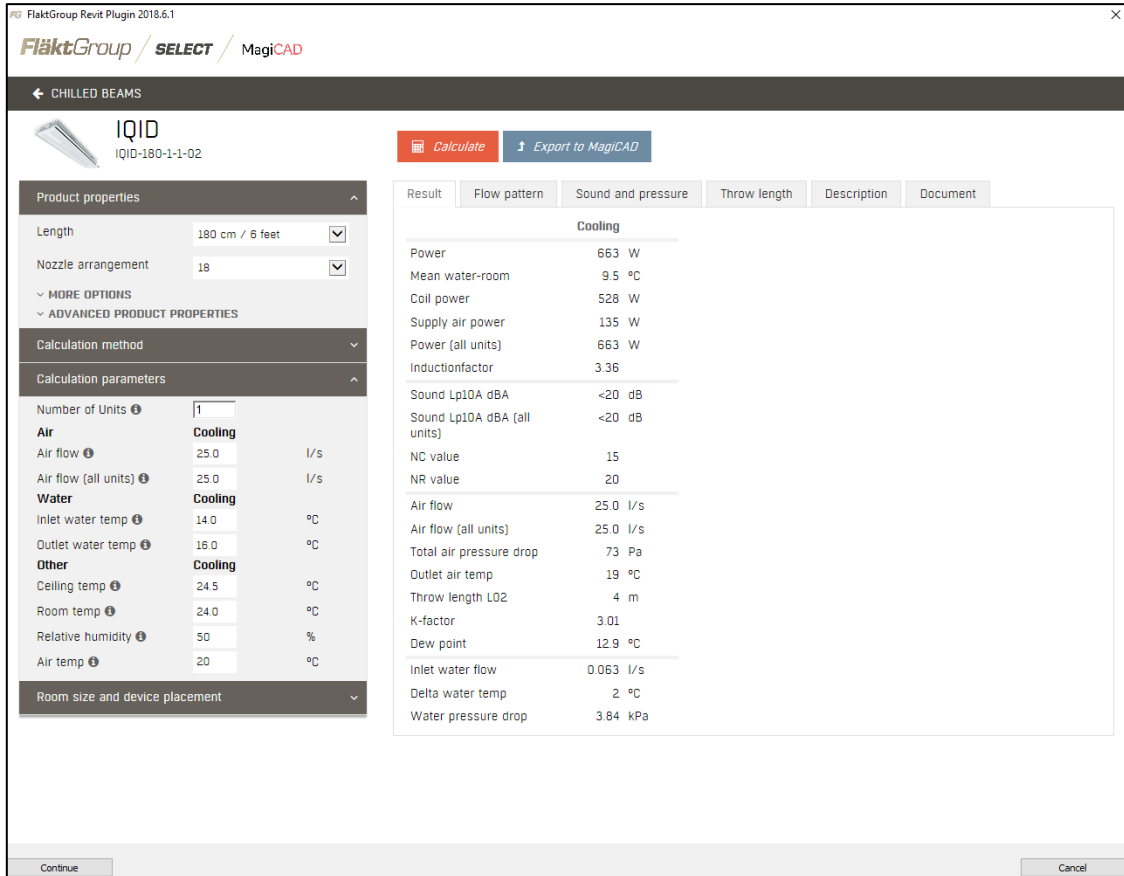
In order to add FläktGroup beam, click Revit Add-Ins ribbon tab and Chilled beam button in FläktGroup panel and SELECT program will open



1. After SELECT has started, the right chilled beam can be selected from the page.



2. The appropriate product variant should be configured on SELECT Calculation page.



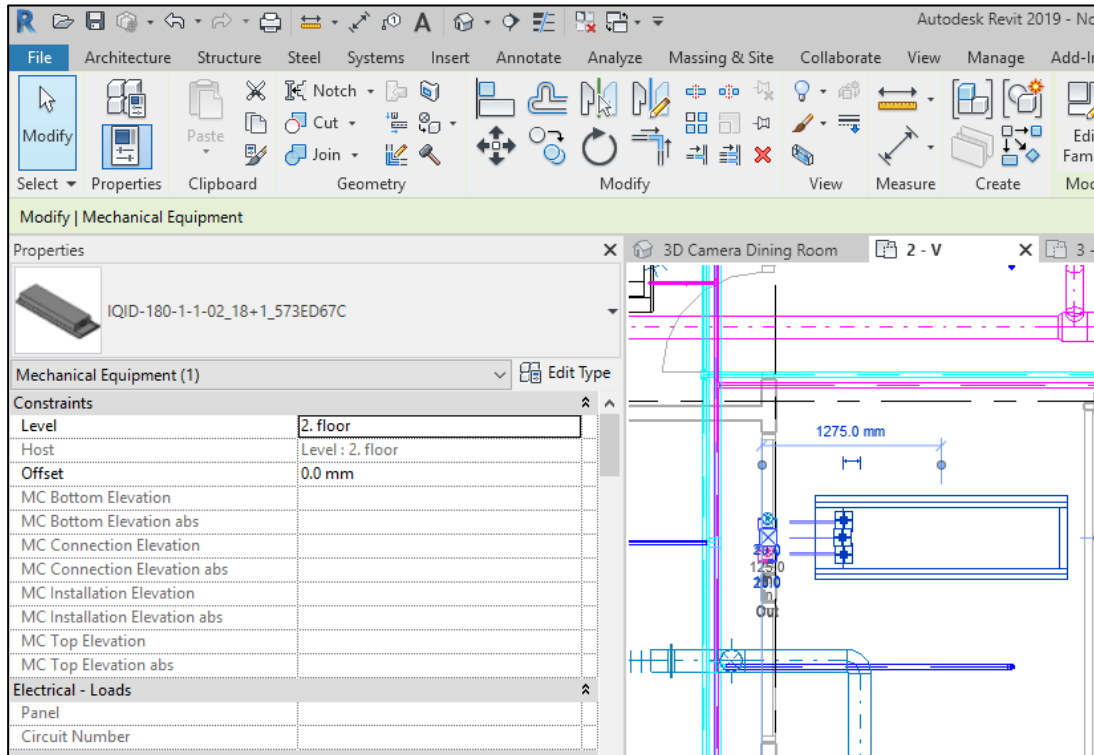
The screenshot shows the 'SELECT' calculation page for the 'IQID-180-1-1-02' product. The interface is divided into several sections:

- Product properties:** Length (180 cm / 6 feet), Nozzle arrangement (18).
- Calculation method:** A dropdown menu.
- Calculation parameters:**
 - Number of Units: 1
 - Air:** Air flow (25.0 I/s), Air flow (all units) (25.0 I/s).
 - Water:** Inlet water temp (14.0 °C), Outlet water temp (16.0 °C).
 - Other:** Ceiling temp (24.5 °C), Room temp (24.0 °C), Relative humidity (50 %), Air temp (20 °C).
- Room size and device placement:** A dropdown menu.
- Buttons:** 'Calculate' (red) and 'Export to MagiCAD' (blue).
- Results Table:**

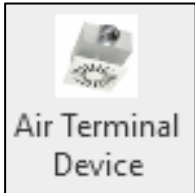
Cooling	
Power	663 W
Mean water-room	9.5 °C
Coil power	528 W
Supply air power	135 W
Power (all units)	663 W
Inductionfactor	3.36
Sound Lp10A dBA	<20 dB
Sound Lp10A dBA (all units)	<20 dB
NC value	15
NR value	20
Air flow	25.0 I/s
Air flow (all units)	25.0 I/s
Total air pressure drop	73 Pa
Outlet air temp	19 °C
Throw length L02	4 m
K-factor	3.01
Dew point	12.9 °C
Inlet water flow	0.063 I/s
Delta water temp	2 °C
Water pressure drop	3.84 kPa

3. Export to MagiCAD button is visible if product is possible to transfer to MagiCAD. Click it and after it Continue button in the left bottom corner.

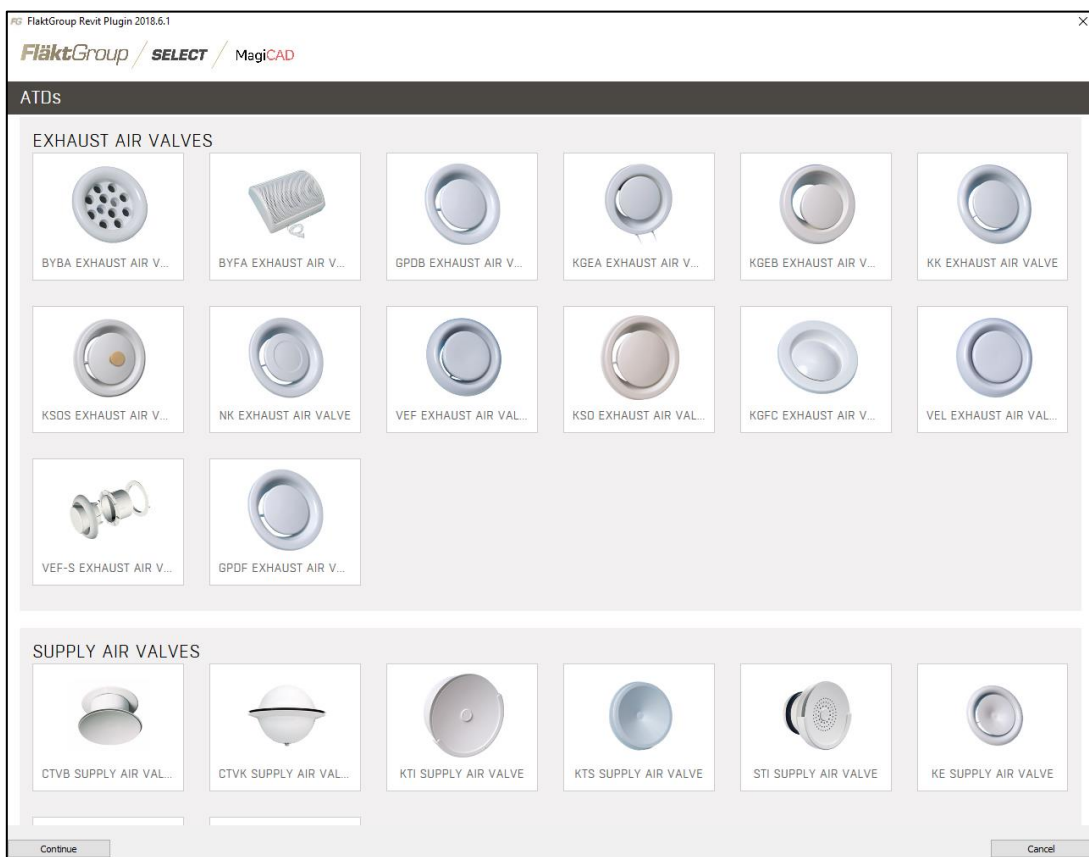
- Product is now exported to MagiCAD for Revit / Revit and user can continue working with MagiCAD / Revit. E.g. connect it to duct system and view product properties.



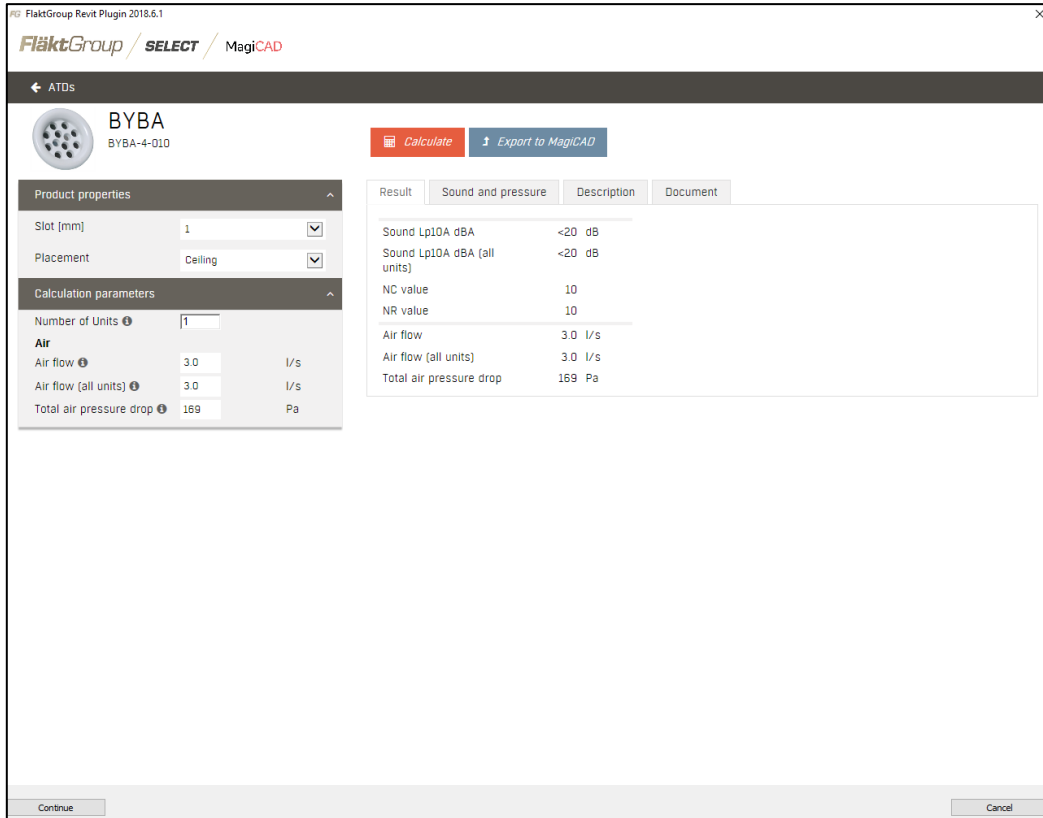
In order to add FläktGroup air terminal device, click Revit Add-Ins ribbon tab and Air Terminal Device button in FläktGroup panel and SELECT program will open



1. After SELECT has started, the right air terminal device can be selected from the product page.

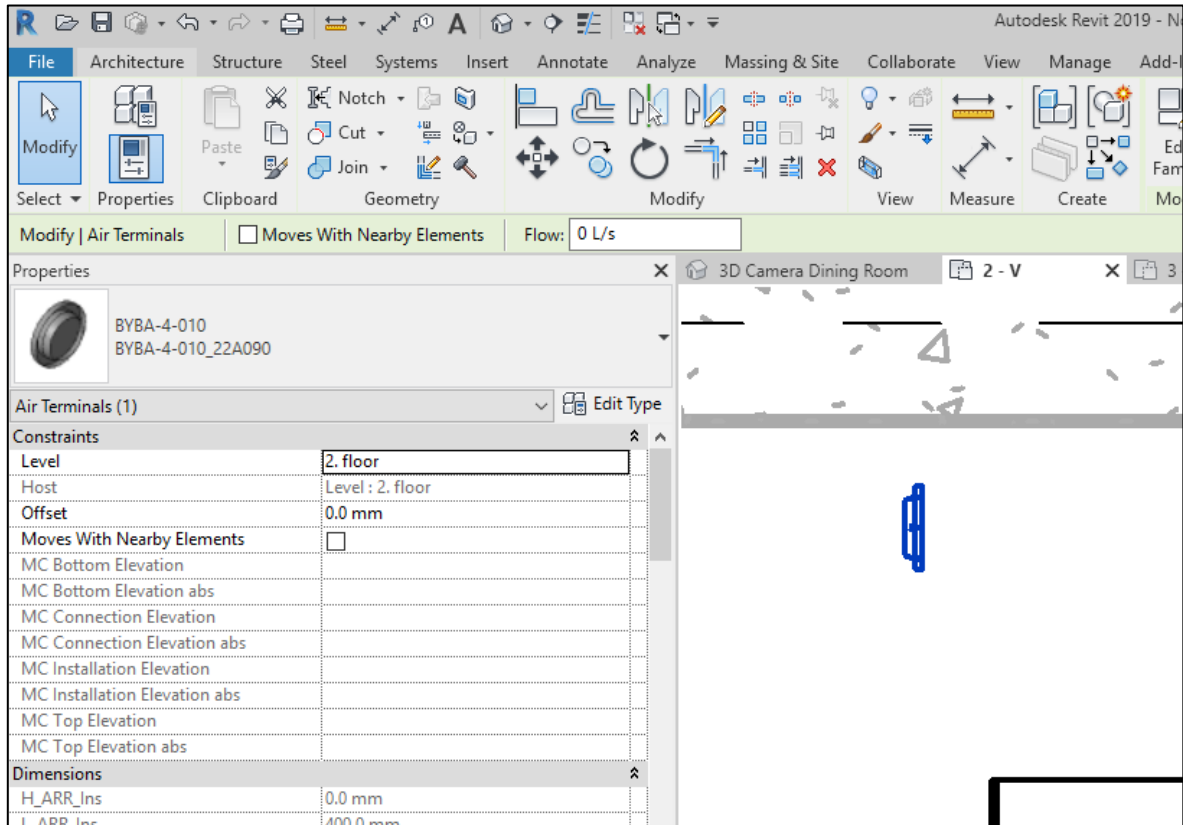


- The appropriate product variant should be configured on SELECT Calculation page.



- Export to MagiCAD button is enabled if it is possible to transfer the product to MagiCAD.

- Product is now exported to MagiCAD for Revit / Revit and user can continue working with MagiCAD / Revit. E.g. connect it to duct system and view product properties.

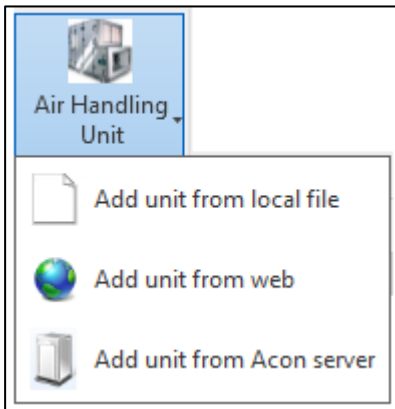


Inserting FläktGroup products from Acon

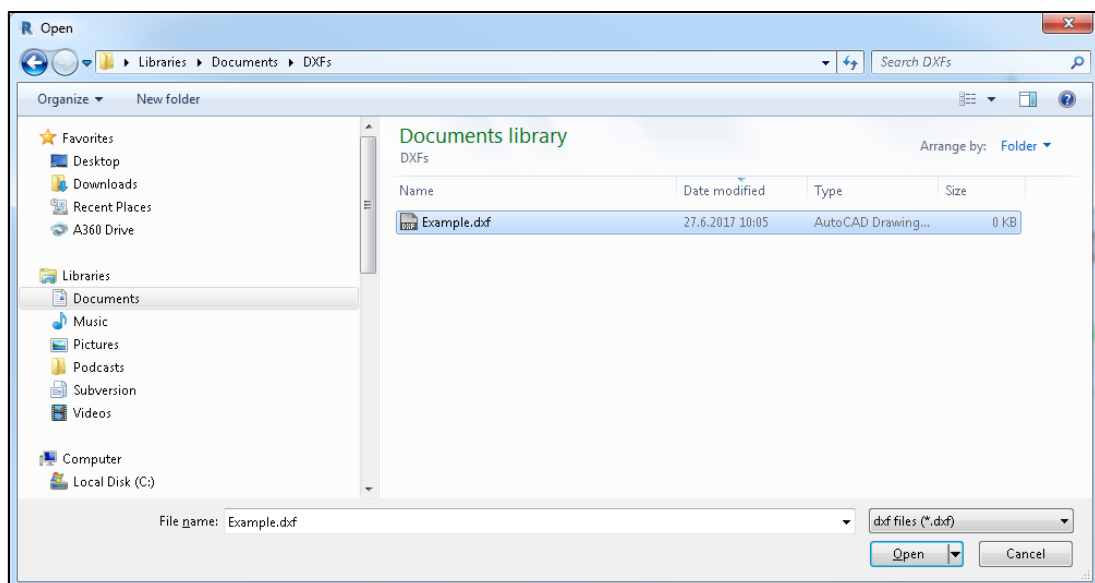
In order to add FläktGroup air handling unit, click Revit Add-Ins ribbon tab and Air Handling Unit button in FläktGroup panel.



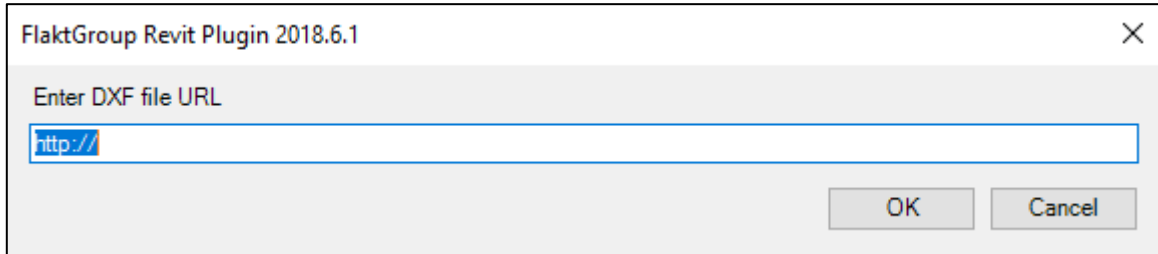
1. Select how you want to import unit to Revit from options.



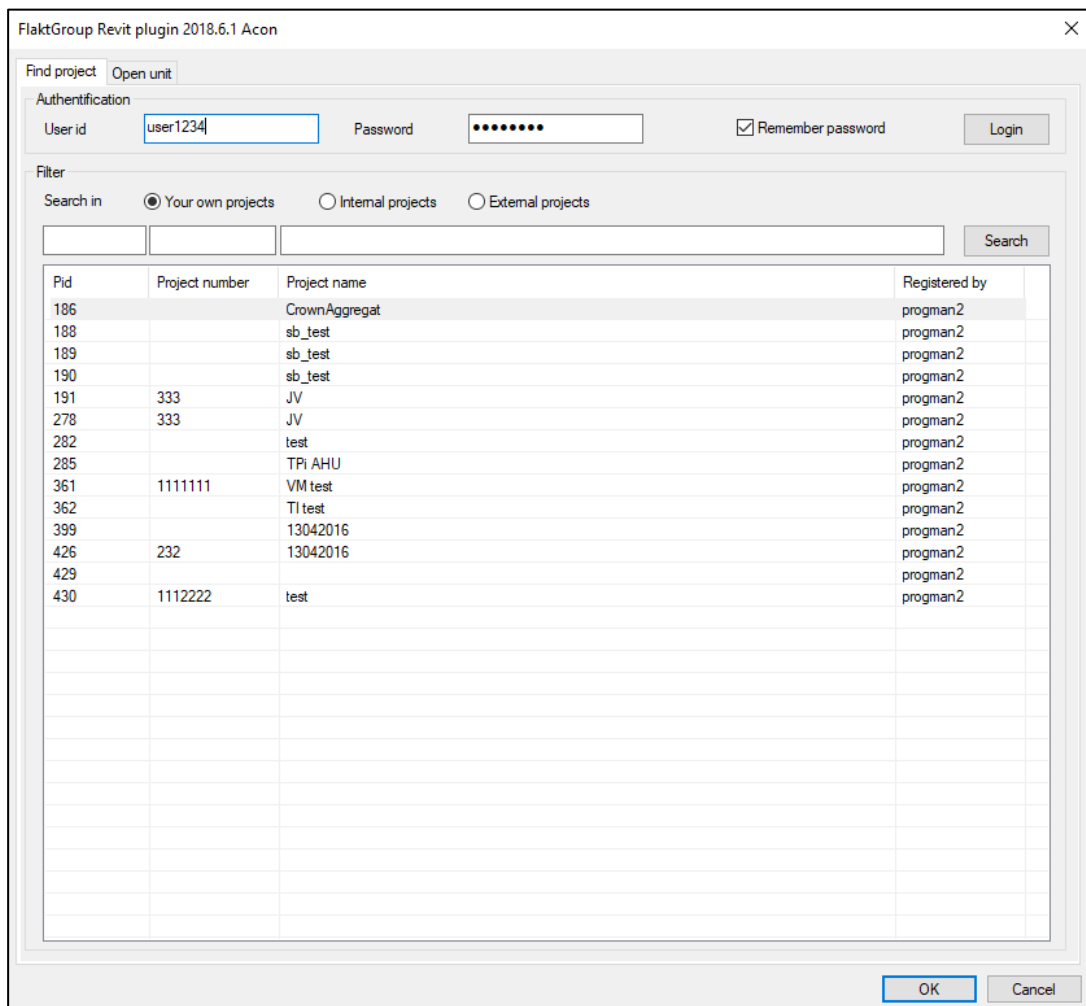
2. Add unit from local file. Select unit's dxf-file provided by Acon. Unit must be saved with 3D - option, otherwise Revit cannot read the file.



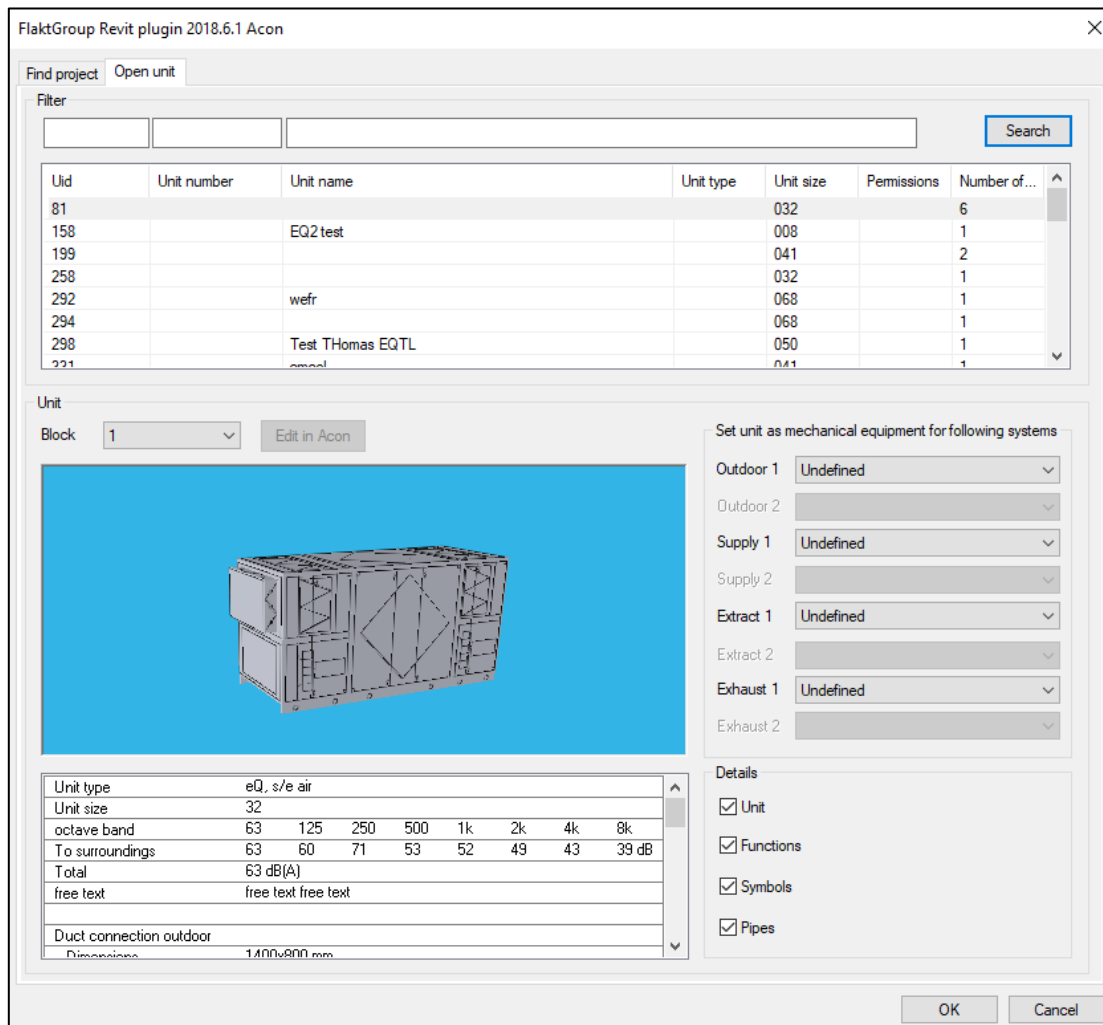
3. Add unit from web. You need the URL address of the unit to get



4. Add unit from Acon server. Input user id and password which are same than in Acon Air Handling Unit program and login. Then select project from list.



- Unit can be selected from the list. If AHU has also duct component, those can be selected in Block combo.



After selections, click Ok and insert Ahu to Revit. Product is now exported to MagiCAD for Revit / Revit and user can continue working with MagiCAD / Revit. E.g. connect it to duct system and view product properties.