

---

**User's Guide**



# **Gustavsberg Rörssystem Template Instructions**

**Document revision 2019-10-23**

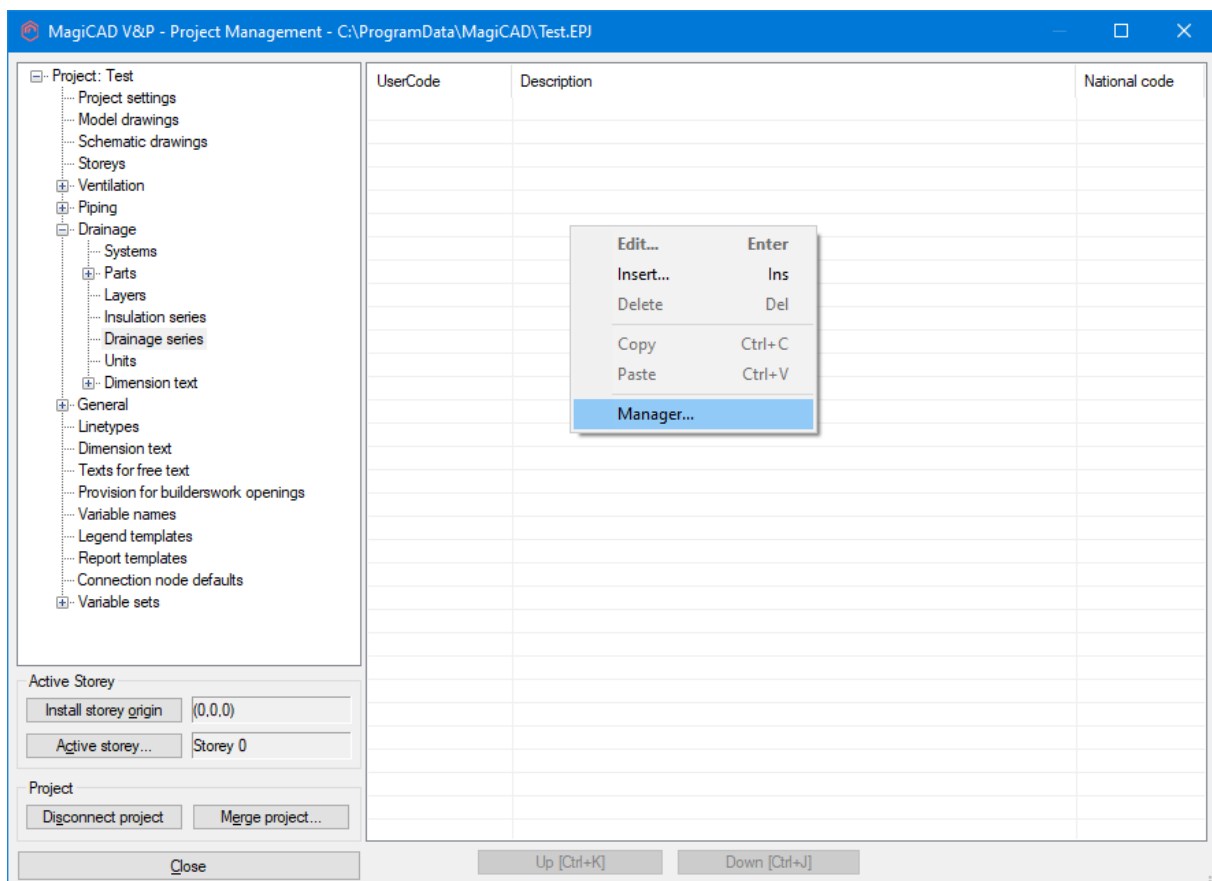
# Gustavsberg Rörssystem template

## Taking the template into use

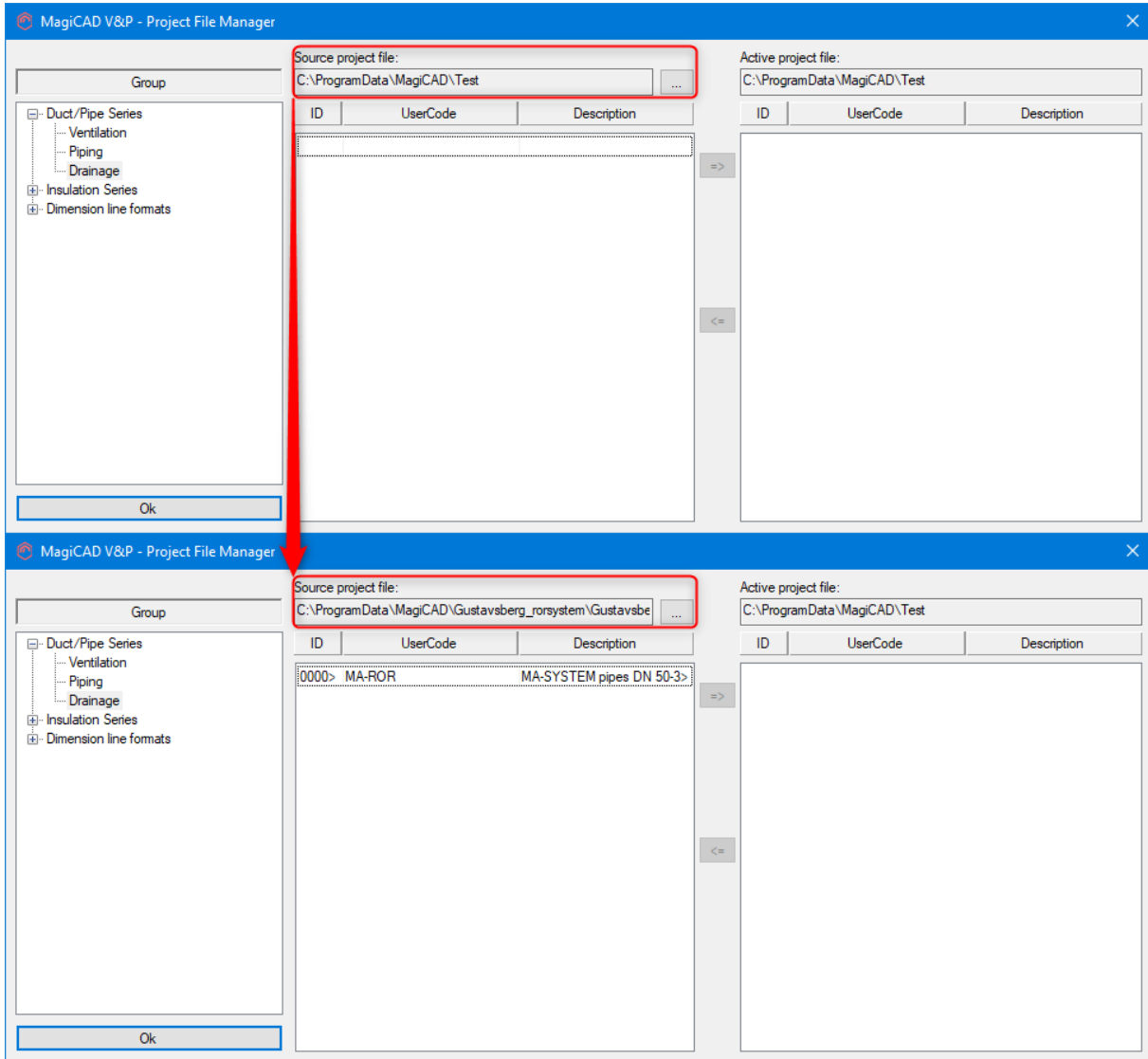
Download the .zip file to your computer. Unzip the file to a suitable location.

Start MagiCAD, open the project management window, and choose *series* from the left part of the window.

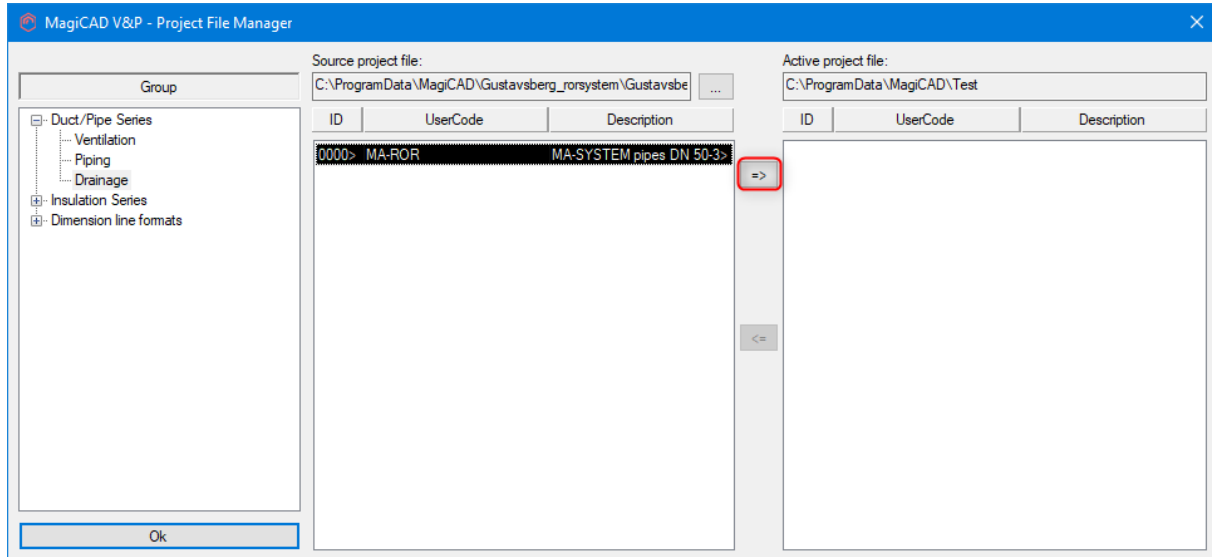
Click the right button of your mouse and choose *Manager*.



Change the source project file to GUSTAVSBERG\_RORSYSTEM.EPJ.



Choose drainage series and add it to your project file.



New Gustavsberg Rörssystem drainage series are added to the current project file and can be used in the drawing.

