



# Installation Guide

MagiCAD 2021 for Revit

MagiCAD

## Table of Contents

<b>GENERAL .....</b>	<b>3</b>
SYSTEM REQUIREMENTS.....	3
SETUP ARCHITECTURE.....	3
SELECTING INSTALLATION PACKAGE .....	4
UPDATING EXISTING SOFTWARE .....	5
<b>INSTALLING MAGICAD ON A SINGLE WORKSTATION.....</b>	<b>6</b>
HOW TO CHECK THE INSTALLED MAGICAD RELEASE VERSION .....	11
LICENSING .....	11
<b>PROGRAM DIRECTORY STRUCTURE .....</b>	<b>12</b>
EXECUTABLE FILES.....	12
LOCATION OF FILES THAT CAN BE MODIFIED AT RUNTIME.....	12
<b>STARTING THE PROGRAM .....</b>	<b>13</b>
MAGICAD PLUGIN MANAGER .....	13
<b>CHECKING FOR UPDATES.....</b>	<b>14</b>
<b>INSTALLING MAGICAD ON MULTIPLE WORKSTATIONS .....</b>	<b>15</b>
MSI INSTALLATION PACKAGE.....	15
<i>Sample installation batch files.....</i>	<i>16</i>
EXE INSTALLATION PACKAGE.....	16
<i>Sample installation batch files for exe package .....</i>	<i>16</i>
<i>Silent installation of patch package.....</i>	<i>17</i>
<b>FREQUENTLY ASKED QUESTIONS .....</b>	<b>18</b>
WHY DOES THE INSTALLER DISPLAY THE WARNING "REVIT IS NOT FOUND"?	18
WHY DO I GET SCHNEIDERELECTRIC SERVICE POPUP DURING INSTALLATION?	18
SCHNEIDER ELECTRIC ECODIAL PLUGIN FOR AUTOCAD DETECTED, WHAT SHOULD I DO?	19
WAS THE PATCH INSTALLED SUCCESSFULLY? I CANNOT FIND IT IN PROGRAMS AND FEATURES.....	19
HOW CAN I UNINSTALL A PATCH?.....	19

## GENERAL

### SYSTEM REQUIREMENTS

MagiCAD for Revit version 2021 runs on

- 64-bit version of Autodesk Revit 2018
- 64-bit version of Autodesk Revit 2019
- 64-bit version of Autodesk Revit 2020
- 64-bit version of Autodesk Revit 2021

### SETUP ARCHITECTURE

This chapter describes MagiCAD installation on a single workstation. In larger corporate networks also silent installations may be performed; in these cases, see chapter “Installing MagiCAD on multiple workstations” and contact MagiCAD technical support if necessary.

**Administrator privileges are required when running MagiCAD Setup.**

The installer contains the following applications:

- MagiCAD for Revit
- License Management Utility
- Check for Updates
- MagiCAD Plugin Manager
- Supports & Hangers
- MagiCloud Connect

## SELECTING INSTALLATION PACKAGE

First, go to MagiCAD Download Portal:

<https://portal.magicad.com/Download/GetProductCategoryList?categoryId=1>

## Download MagiCAD

Welcome to the MagiCAD download page. To download MagiCAD installation package, define Autodesk technology and operating system, select the MagiCAD version, download site, MagiCAD product and sign in to begin download.



The screenshot shows a web interface for selecting a MagiCAD installation package. It features several dropdown menus and a list of options:

- TECHNOLOGY:** Autodesk Revit
- OPERATING SYSTEM:** Windows 64-bit
- MAGICAD VERSION:** 2021
- MAGICAD PRODUCT:** MagiCAD 2021 for Revit 2021 (EXE)
- DOWNLOAD LOCATION:** A dropdown menu is open, showing a list of options:
  - MagiCAD 2021 for Revit 2018 (EXE)
  - MagiCAD 2021 for Revit 2019 (EXE)
  - MagiCAD 2021 for Revit 2020 (EXE)
  - MagiCAD 2021 for Revit 2021 (EXE)
  - System Administrators ---
  - MagiCAD 2021 for Revit 2018 (MSI)
  - MagiCAD 2021 for Revit 2019 (MSI)
  - MagiCAD 2021 for Revit 2020 (MSI)
  - MagiCAD 2021 for Revit 2021 (MSI)
- OTHER USEFUL TOOLS:** A section with links for 'M', 'N', and 'In'.

**Note:** Before beginning the installation process, please familiarise yourself with the instructions on installation and license activation in this Installation Guide.

In the MagiCAD Download Portal, the EXE and MSI installation packages are available in the **MAGICAD PRODUCT** section. With Update Releases, you also have the option to download the relevant installation package directly via MagiCAD's Check for Updates function.

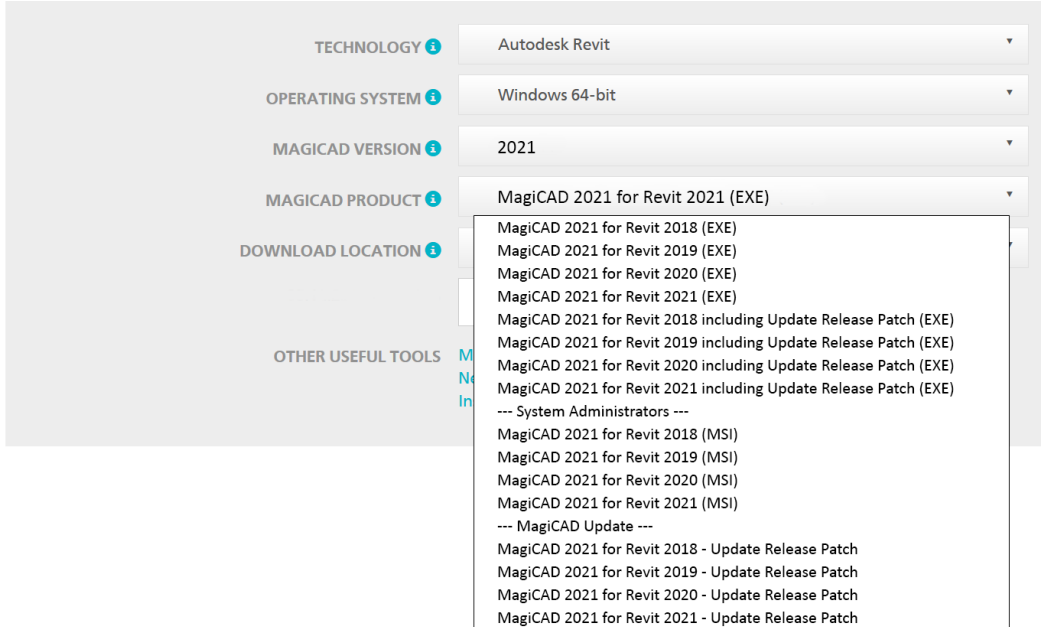
Both of the installation packages install the full version of the MagiCAD Release, but there are differences in the installation procedure. Select the procedure which best suits your needs:

- 1. MagiCAD 2021 for Revit (EXE)**
  - For manual installation. This is the default installation option for users who have administrator rights.
  - Can be installed silently via command line, but the only available parameters are language and install location. If you need more installation parameters, use the MSI package
- 2. MagiCAD 2021 for Revit (MSI) (---System Administrators---)**
  - This is the default installation option for System Administrators
  - Use this package if you have to use command line parameters
  - Must be installed from Admin Command Prompt

## UPDATING EXISTING SOFTWARE

### Download MagiCAD

Welcome to the MagiCAD download page. To download MagiCAD installation package, define Autodesk technology and operating system, select the MagiCAD version, download site, MagiCAD product and sign in to begin download.



The screenshot shows the MagiCAD download portal interface. On the left, there are several filter categories: TECHNOLOGY (Autodesk Revit), OPERATING SYSTEM (Windows 64-bit), MAGICAD VERSION (2021), MAGICAD PRODUCT (MagiCAD 2021 for Revit 2021 (EXE)), DOWNLOAD LOCATION, and OTHER USEFUL TOOLS. The 'MAGICAD PRODUCT' dropdown menu is open, displaying a list of available installation packages:

- MagiCAD 2021 for Revit 2018 (EXE)
- MagiCAD 2021 for Revit 2019 (EXE)
- MagiCAD 2021 for Revit 2020 (EXE)
- MagiCAD 2021 for Revit 2021 (EXE)
- MagiCAD 2021 for Revit 2018 including Update Release Patch (EXE)
- MagiCAD 2021 for Revit 2019 including Update Release Patch (EXE)
- MagiCAD 2021 for Revit 2020 including Update Release Patch (EXE)
- MagiCAD 2021 for Revit 2021 including Update Release Patch (EXE)
- System Administrators ---
- MagiCAD 2021 for Revit 2018 (MSI)
- MagiCAD 2021 for Revit 2019 (MSI)
- MagiCAD 2021 for Revit 2020 (MSI)
- MagiCAD 2021 for Revit 2021 (MSI)
- MagiCAD Update ---
- MagiCAD 2021 for Revit 2018 - Update Release Patch
- MagiCAD 2021 for Revit 2019 - Update Release Patch
- MagiCAD 2021 for Revit 2020 - Update Release Patch
- MagiCAD 2021 for Revit 2021 - Update Release Patch

With Update Releases, when updating your existing installation, you have the option to download the relevant installation package directly via MagiCAD's Check for Updates function.

**Note:** Before beginning the installation process, please familiarise yourself with the instructions on installation and license activation in this [Installation Guide](#).

There are three different Update Release installers available in the **MAGICAD PRODUCT** section of the Download Portal:

- 1. MagiCAD 2021 for Revit including Update Release Patch (EXE)**
  - If you do not have MagiCAD 2021 installed, select this package. If you have MagiCAD installed, you need to uninstall it before installing this package. The package installs both MagiCAD 2021 Release and Update Release Patch.
- 2. MagiCAD 2021 for Revit – Update Release Patch (---MagiCAD Update---)**
  - An existing MagiCAD 2021 installation must be found on the PC. If you have MagiCAD 2021 release already installed on the PC, use this installation package. The newest patch will always include the previous Update Releases. Activation codes are not needed for the Update Release patch installation
- 3. MagiCAD 2021 for Revit (MSI) (---System Administrators---)**
  - This MSI package does **NOT include Update Release Patch**.
  - Upgrade to Update Release by installing **MagiCAD 2021 for Revit – Update Release Patch**
  - Use this package if you have to use command line parameters

## INSTALLING MAGICAD ON A SINGLE WORKSTATION

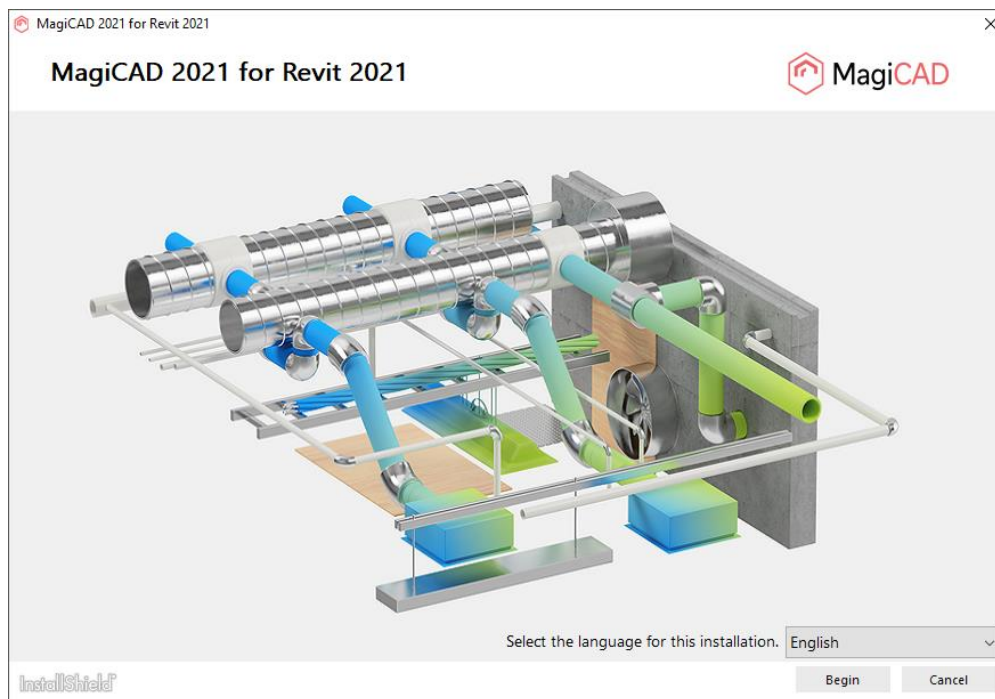
This chapter describes MagiCAD installation on a single workstation. In larger corporate networks also silent installations may be performed; in these cases, see chapter “Installing MagiCAD on multiple workstations” and contact MagiCAD technical support if necessary.

**Administrator privileges are required when running MagiCAD Setup.**

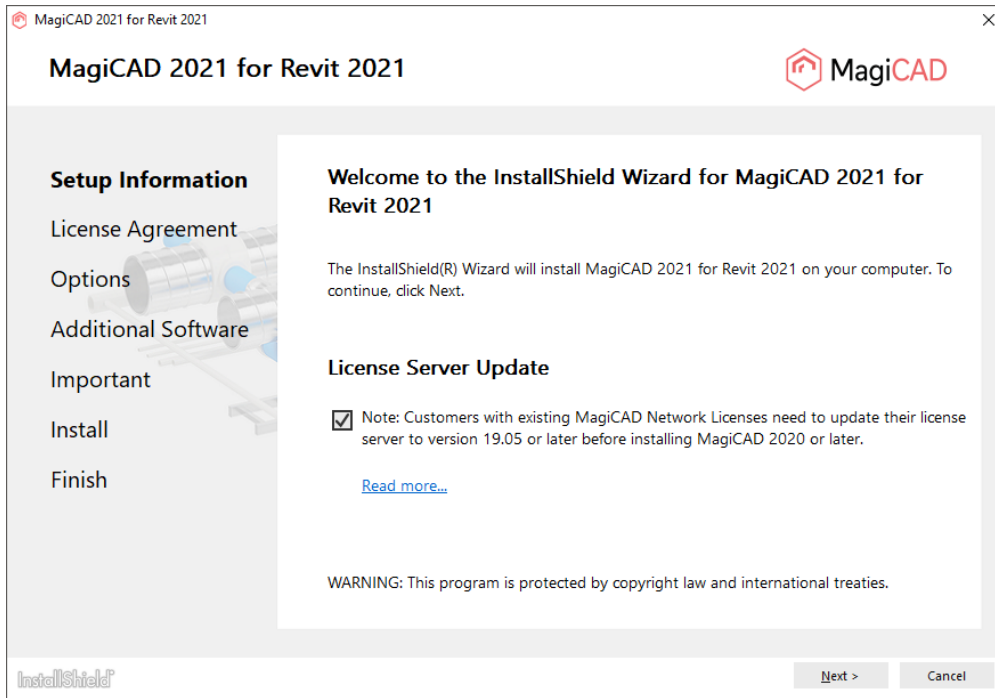
Run the setup package and follow the instructions.



If User Account Control is enabled, installation requires permission to continue. If this dialog appears, click **Yes**.



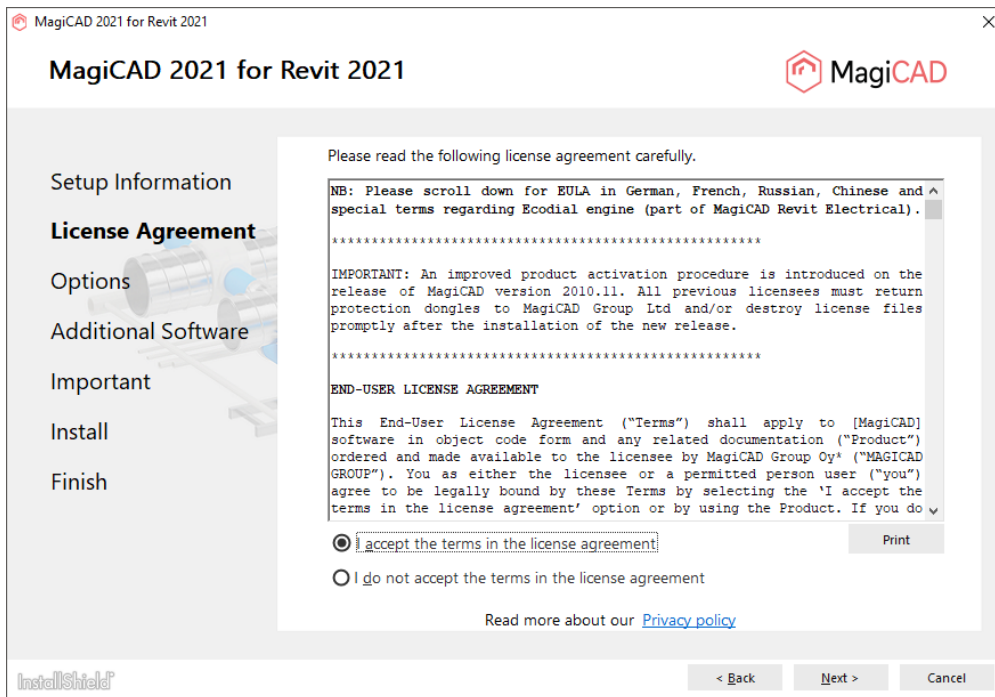
Select the installation language and click *Begin*.



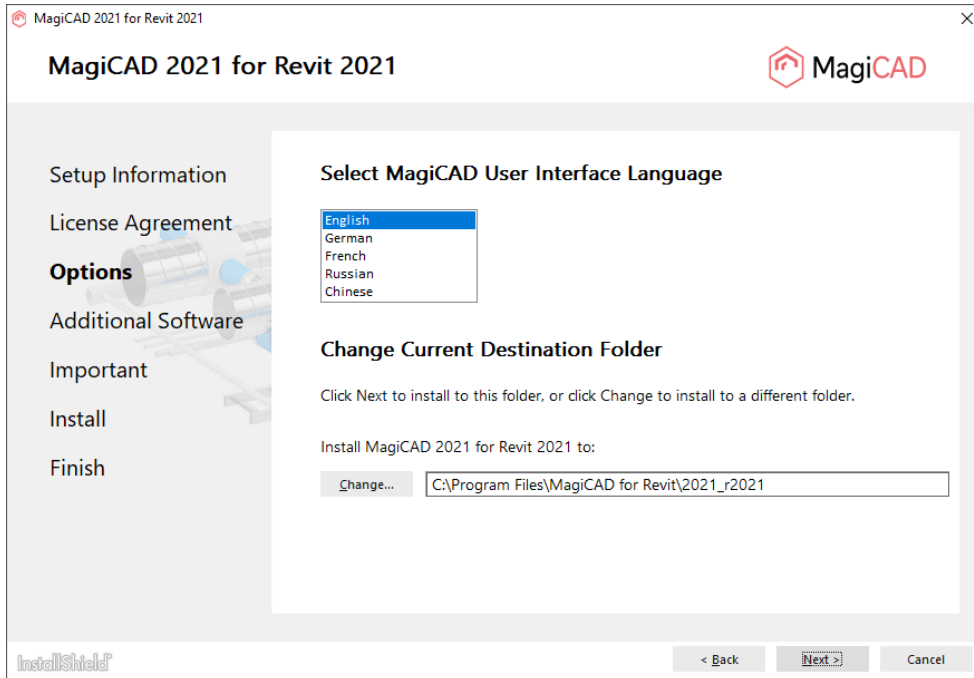
**Customers with existing MagiCAD Network Licenses need to update their license server to version 19.05 or later before installing MagiCAD 2021. [Read More...](#)**

Check the note and click **Next**.

You must read and accept the license agreement to proceed with the MagiCAD Setup procedure.



Next, select the **User Interface Language** for MagiCAD. Select the **Destination Folder**. If you want to change the default folder, click **Change** and select a new Destination Folder. Click **Next** to continue.



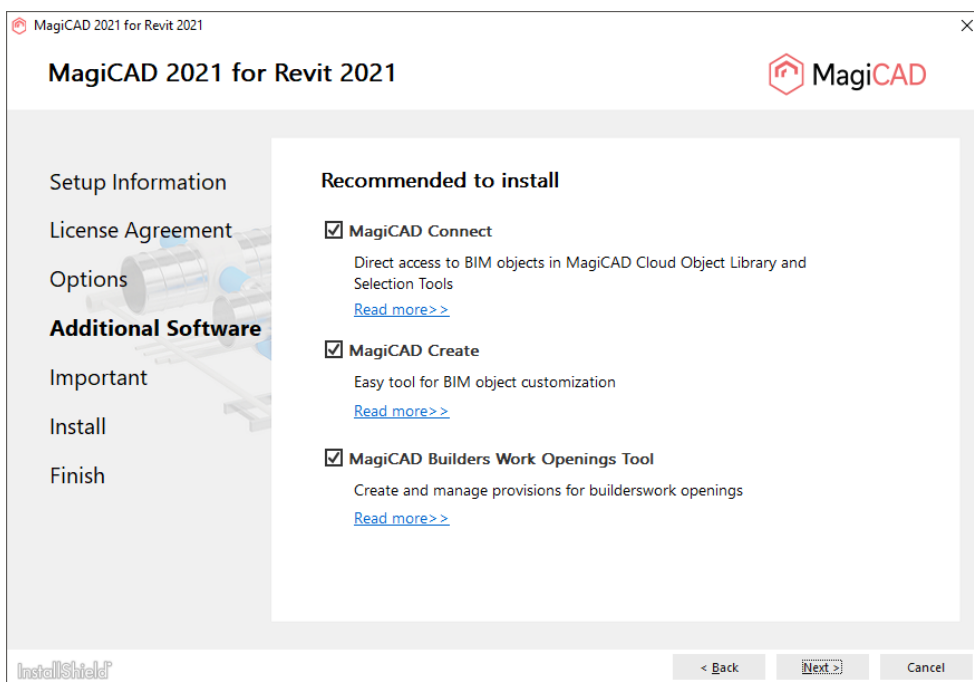
During MagiCAD installation it is now possible to install additional tools which will make design work easier. It is optional but recommended to install the following applications:

**MagiCAD Connect** enables you to access MagiCAD Cloud libraries and selection tools without leaving your MagiCAD project. You can insert BIM objects from MagiCAD Cloud directly into your project and use selection tools to select, configure and insert manufacturer products.

**MagiCAD Create** offers a fast and easy way to create custom MEP-specific BIM objects and libraries.

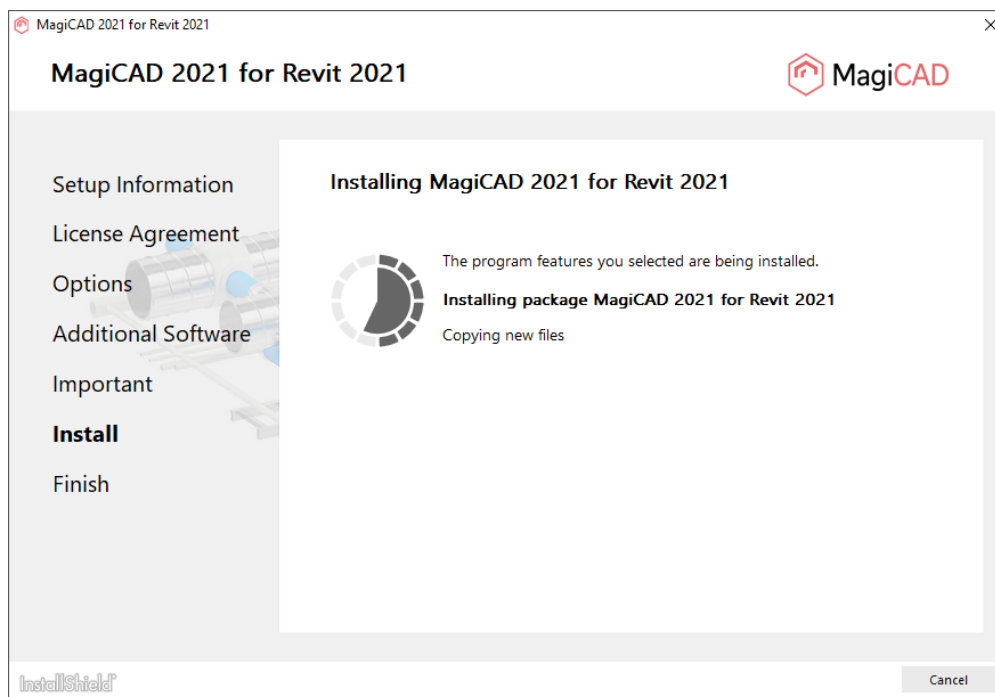
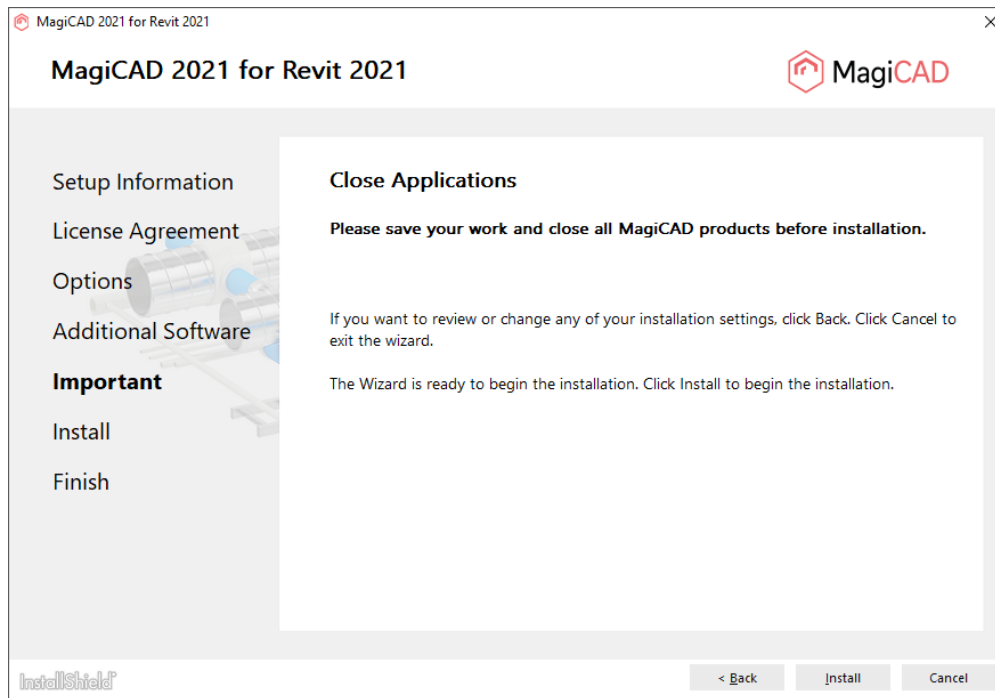
**MagiCAD Builders Work Openings Tool** is a utility for managing provisions for voids (builders work openings).

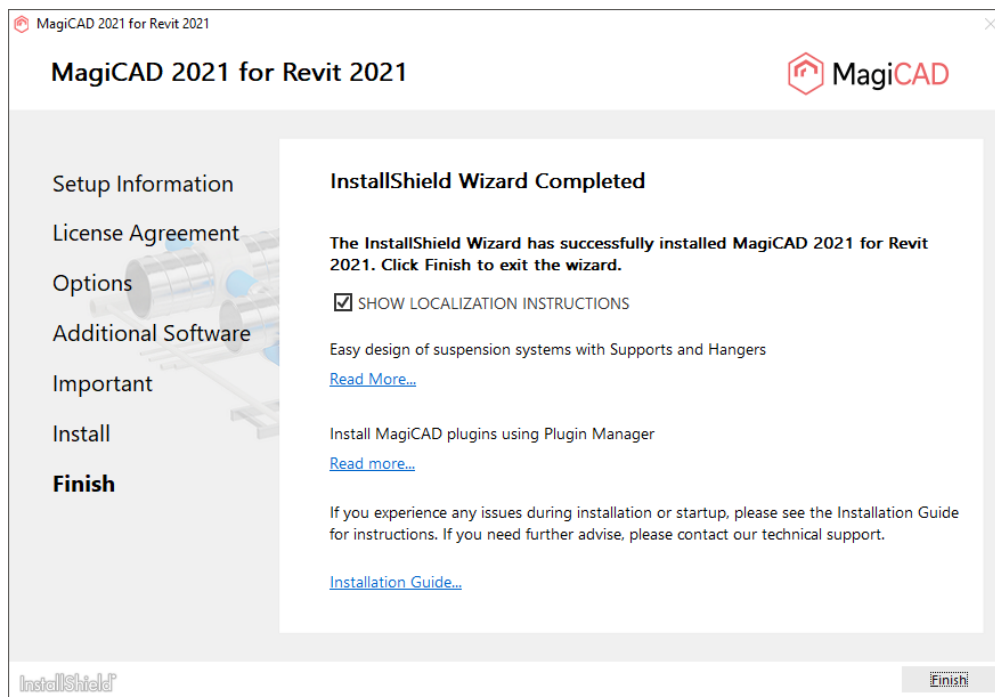
Installing is easy, just check the tools you want to install and click **Next**.





It is important that you save your work and close Revit before continuing. Click **Install** to continue. The MagiCAD Setup will then begin copying files and defining the necessary settings.





Click **Finish** to complete the setup.

When the MagiCAD Setup procedure has been completed, **check that the program license is available**. Follow the instructions for license usage and activation in the chapter "Licensing".

## HOW TO CHECK THE INSTALLED MAGICAD RELEASE VERSION

The Comments column in Programs and Features displays the version, e.g. MagiCAD Release: 2021.

If the Comments column in Programs and Features is not visible, right-click the column title bar, select 'More...', select 'Comments' and click 'OK'.

## LICENSING

MagiCAD can be used with two types of licenses:

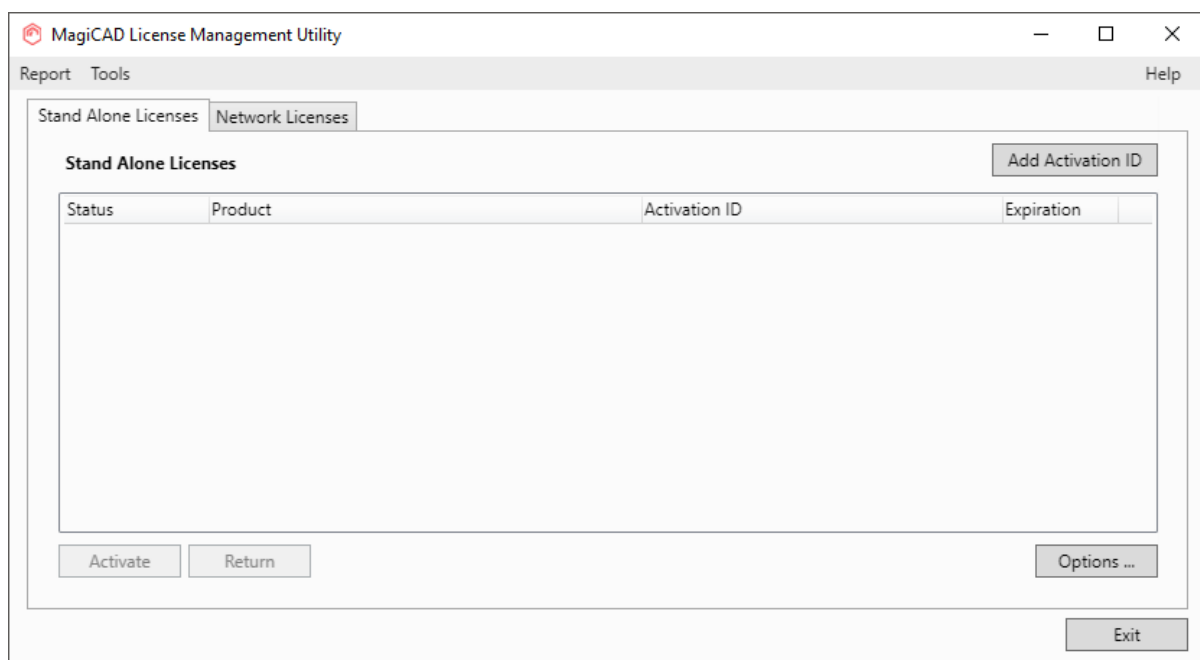
**Stand-alone licenses**, which are activated for a specific workstation. Internet connection is required when the licenses are activated. However, when the licenses have been activated, the program can be used also when disconnected from the network.

**Network licenses**, which are stored on a network server.

If your company's IT administrator has enabled license borrowing, you can borrow the application licenses to be used while disconnected from the network.

Setting up a network license server is described in a separate document.

Both license types are managed at the workstation using the license management utility. The shortcut link to the utility can be found in the **MagiCAD\ Tools** desktop folder.



**If the version of the MagiCAD license currently activated on your workstation is 2015.11 SR-1 or older, you need to return the old license before you can activate the new license.**

Select the product and click the *Return* button.

## PROGRAM DIRECTORY STRUCTURE

The program executables are mainly installed to the **Destination Folder** selected during the MagiCAD Setup procedure.

### EXECUTABLE FILES

The files of the MagiCAD Supports & Hangers application are installed under one of the following directories, depending on the Revit platform:

C:\Program Files\MagiCAD Group\MagiCAD Supports & Hangers\r2018

C:\Program Files\MagiCAD Group\MagiCAD Supports & Hangers\r2019

C:\Program Files\MagiCAD Group\MagiCAD Supports & Hangers\r2020

C:\Program Files\MagiCAD Group\MagiCAD Supports & Hangers\r2021

The utilities that are shared by MagiCAD for Revit and MagiCAD for AutoCAD are installed in the following directories:

C:\Program Files\Common Files\MagiCAD Common\Check for Updates

C:\Program Files\Common Files\MagiCAD Common\License Management Utility

### LOCATION OF FILES THAT CAN BE MODIFIED AT RUNTIME

---

By default, the location of the user-modifiable files is in the “local application folder”. It is, however, possible to affect the search path of these files when the software is installed as silent setup (see chapter “Utilising MSI properties”).

---

The default location is one of the following, depending on the Revit platform:

C:\ProgramData\MagiCAD-RS\2020\_r2018

C:\ProgramData\MagiCAD-RS\2020\_r2019

C:\ProgramData\MagiCAD-RS\2020\_r2020

C:\ProgramData\MagiCAD-RS\2020\_r2021

Subdirectory	Contents
Documentation	User's Guide and “Read Me First”
Mrv	Datasets
Annotations	Text tags
Templates	Templates for MagiCAD for Revit

---

Please do not modify the contents of other subdirectories, nor the file `magiParameters.txt`.

---

The data files of MagiCAD Supports & Hangers are installed under one of the following directories, depending on the Revit platform:

C:\ProgramData\MagiCAD Group\MagiCAD Supports & Hangers\r2018

C:\ProgramData\MagiCAD Group\MagiCAD Supports & Hangers\r2019

C:\ProgramData\MagiCAD Group\MagiCAD Supports & Hangers\r2020

C:\ProgramData\MagiCAD Group\MagiCAD Supports & Hangers\r2021

## STARTING THE PROGRAM

The program will start automatically when you start Revit. The default template to be used with MagiCAD for Revit will also be loaded automatically.

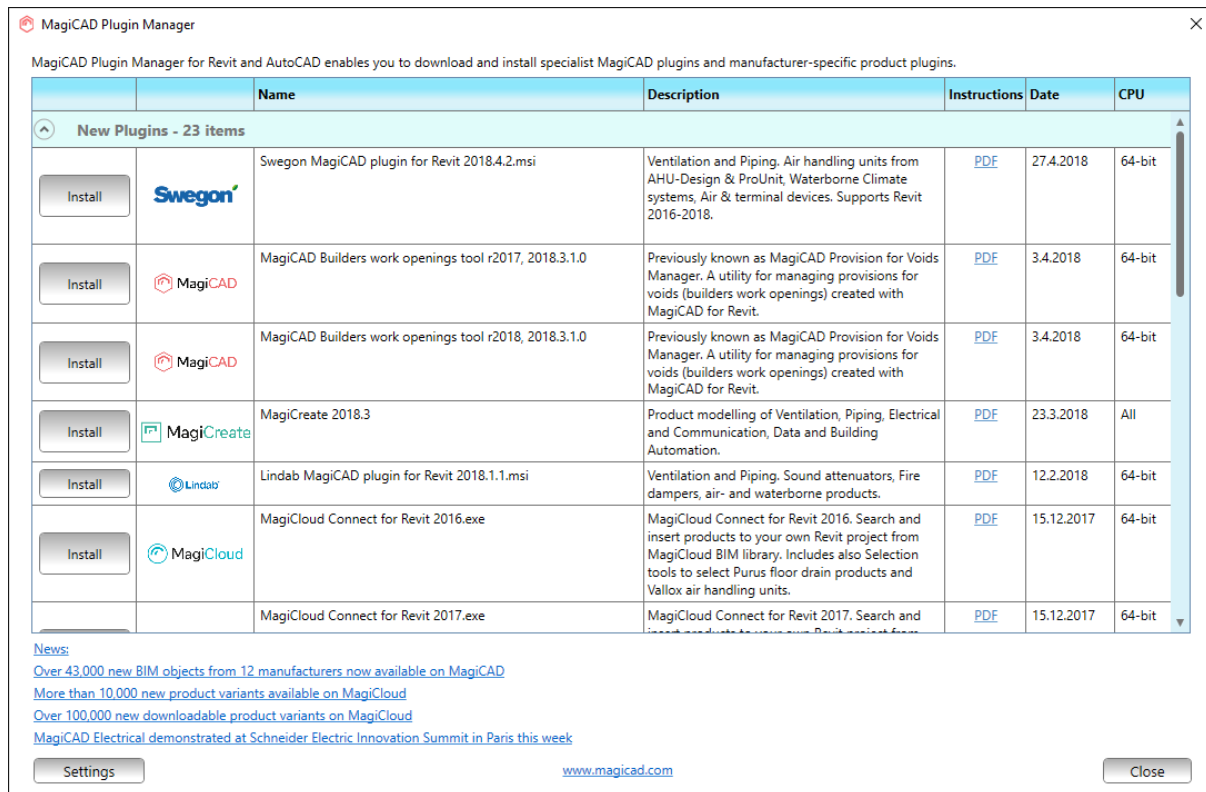
The "MagiCAD for Revit" folder does not include a shortcut icon for starting the program. Start Revit normally using its shortcut.

MagiCAD commands are found under "MagiCAD Common", "MagiCAD Ventilation", "MagiCAD Piping", and "MagiCAD Electrical" ribbon tabs.







*MagiCAD Plugin Manager* and *MagiCAD Supports & Hangers* are also loaded automatically when you start Revit.

## MAGICAD PLUGIN MANAGER

When you start the program for the first time, *MagiCAD Plugin Manager* window opens and you can install third-party plugins to complement your software. You can also start the plugin manager later from the MagiCAD ribbon.



MagiCAD Plugin Manager for Revit and AutoCAD enables you to download and install specialist MagiCAD plugins and manufacturer-specific product plugins.

	Name	Description	Instructions	Date	CPU
New Plugins - 23 items					
Install	 Swegon MagiCAD plugin for Revit 2018.4.2.msi	Ventilation and Piping. Air handling units from AHU-Design & ProUnit, Waterborne Climate systems, Air & terminal devices. Supports Revit 2016-2018.	<a href="#">PDF</a>	27.4.2018	64-bit
Install	 MagiCAD Builders work openings tool r2017, 2018.3.1.0	Previously known as MagiCAD Provision for Voids Manager. A utility for managing provisions for voids (builders work openings) created with MagiCAD for Revit.	<a href="#">PDF</a>	3.4.2018	64-bit
Install	 MagiCAD Builders work openings tool r2018, 2018.3.1.0	Previously known as MagiCAD Provision for Voids Manager. A utility for managing provisions for voids (builders work openings) created with MagiCAD for Revit.	<a href="#">PDF</a>	3.4.2018	64-bit
Install	 MagiCreate 2018.3	Product modelling of Ventilation, Piping, Electrical and Communication, Data and Building Automation.	<a href="#">PDF</a>	23.3.2018	All
Install	 Lindab MagiCAD plugin for Revit 2018.1.1.msi	Ventilation and Piping. Sound attenuators, Fire dampers, air- and waterborne products.	<a href="#">PDF</a>	12.2.2018	64-bit
Install	 MagiCloud Connect for Revit 2016.exe	MagiCloud Connect for Revit 2016. Search and insert products to your own Revit project from MagiCloud BIM library. Includes also Selection tools to select Purus floor drain products and Vallox air handling units.	<a href="#">PDF</a>	15.12.2017	64-bit
	MagiCloud Connect for Revit 2017.exe	MagiCloud Connect for Revit 2017. Search and insert products to your own Revit project from	<a href="#">PDF</a>	15.12.2017	64-bit

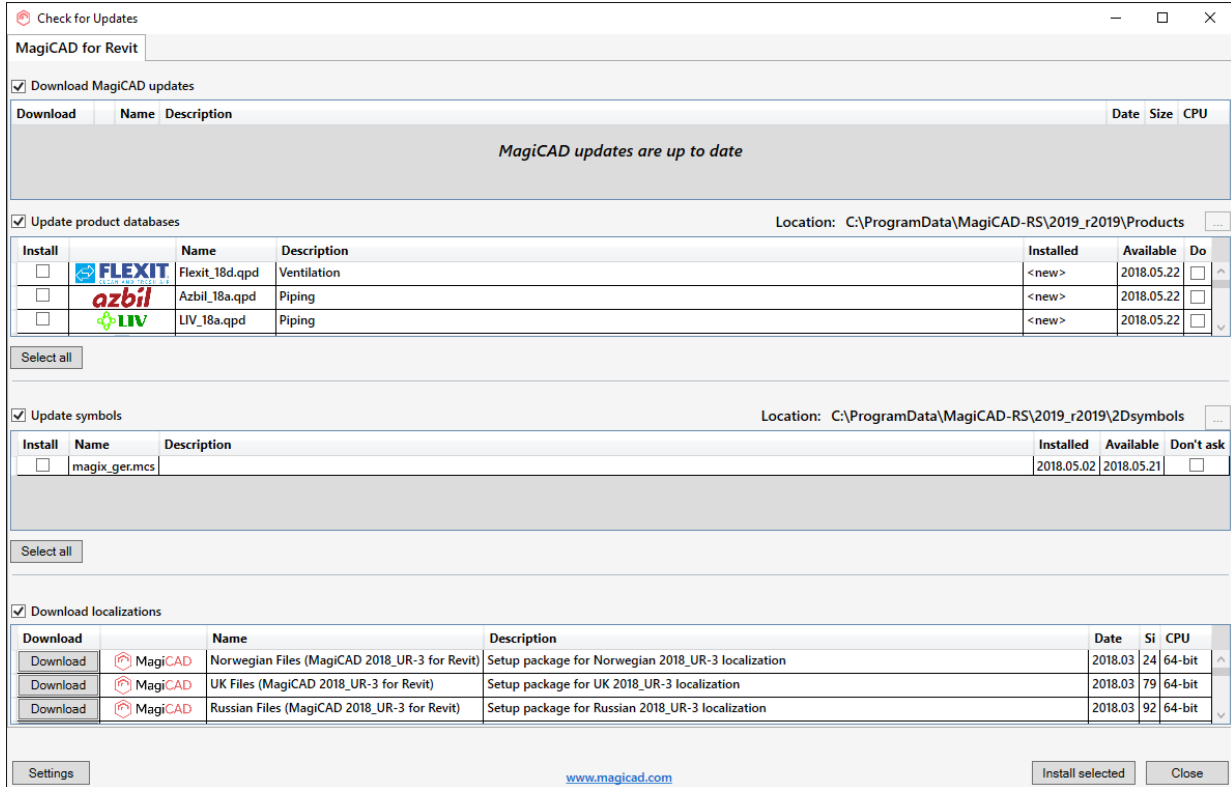
News:  
[Over 43,000 new BIM objects from 12 manufacturers now available on MagiCAD](#)  
[More than 10,000 new product variants available on MagiCloud](#)  
[Over 100,000 new downloadable product variants on MagiCloud](#)  
[MagiCAD Electrical demonstrated at Schneider Electric Innovation Summit in Paris this week](#)

Settings [www.magicad.com](http://www.magicad.com) Close

## CHECKING FOR UPDATES

You need an open internet connection to be able to use this function.

When you click the **Check for Updates** button in the MagiCAD Common ribbon, a utility displaying the available updates starts.






Check for Updates

MagiCAD for Revit

Download MagiCAD updates

Download	Name	Description	Date	Size	CPU
<i>MagiCAD updates are up to date</i>					

Update product databases Location: C:\ProgramData\MagiCAD-RS\2019\_r2019\Products ...

Install	Name	Description	Installed	Available	Do
<input type="checkbox"/>	 FLEXIT	Flexit_18d.qpd	Ventilation	<new>	2018.05.22
<input type="checkbox"/>	 azbil	Azbil_18a.qpd	Piping	<new>	2018.05.22
<input type="checkbox"/>	 LIV	LIV_18a.qpd	Piping	<new>	2018.05.22



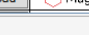
Select all

Update symbols Location: C:\ProgramData\MagiCAD-RS\2019\_r2019\2Dsymbols ...

Install	Name	Description	Installed	Available	Don't ask
<input type="checkbox"/>	magix_ger.mcs		2018.05.02	2018.05.21	<input type="checkbox"/>

Select all

Download localizations

Download	Name	Description	Date	Si	CPU
<input type="checkbox"/>	 MagiCAD	Norwegian Files (MagiCAD 2018_UR-3 for Revit)	Setup package for Norwegian 2018_UR-3 localization	2018.03	24 64-bit
<input type="checkbox"/>	 MagiCAD	UK Files (MagiCAD 2018_UR-3 for Revit)	Setup package for UK 2018_UR-3 localization	2018.03	79 64-bit
<input type="checkbox"/>	 MagiCAD	Russian Files (MagiCAD 2018_UR-3 for Revit)	Setup package for Russian 2018_UR-3 localization	2018.03	92 64-bit

Settings [www.magicad.com](http://www.magicad.com) Install selected Close

## INSTALLING MAGICAD ON MULTIPLE WORKSTATIONS

### MSI INSTALLATION PACKAGE

The MagiCAD Setup procedure is performed using Microsoft Installer technology. The installation can be customised with the help of certain properties, which reduces the amount of work when a large number of workstations are configured.

The properties can be manipulated, e.g., by employing scripts or transforms.

If the program is installed using a silent setup, it is possible to manipulate two directory settings. If the MSI property is not specified, default value is used.

Property	Purpose	Default value
INSTALLDIR	The directory where the program executables will be installed.	C:\Program Files\MagiCAD for Revit\2021_r2021  Note: this may vary depending on the language of the operating system and the program version
DIR_LOCALDATA	The directory where the user-modifiable files will be located	C:\ProgramData\MagiCAD for Revit\2021_r2021  Note: this may vary depending on the language of the operating system and the program version
UI_LANGUAGE	User interface language of the program. 1512=English 1513=German 1515=French 1528=Russian 1539=Chinese	1512
LICENSE_SERVER	Server(s) containing network licenses defined in <code>port@host</code> format. Multiple servers are separated with a semicolon.	
INSTALL_CFU	Install Check for Updates 0=no, 1=yes	1
INSTALL_LMU	Install License Management Utility 0=no, 1=yes	1
INSTALL_PM	Install Plugin Manager 0=no, 1=yes	1

Note that the `DIR_LOCALDATA` property affects only the search path that is written to the program registry. The directory specification is provided in case you want the program to search the files from a different directory (e.g. a shared network directory).

The setup program still copies the files to the default directory on the workstation.

### Sample installation batch files

This sample batch installs the 64-bit Revit 2021 compatible version of MagiCAD to the directory C:\MC\_Revit\_2021\_r2021 and writes the registry so that the data files are read/written in directory X:\MC\_Revit\_LocalData.

The user interface language is English (default language) and the license server is not specified.

```
msiexec /i "MagiCAD 2021 for Revit 2021.msi" /qb
INSTALLDIR="C:\MC_Revit_2021_r2021" DIR_LOCALDATA="X:\MC_Revit_LocalData"
```

This sample batch installs the 64-bit Revit 2018 compatible version of MagiCAD to the default directory. User interface language is selected to be Chinese and the program uses network licenses that are located on *server1* (no port number specified). Default paths are used.

```
msiexec /i "MagiCAD 2021 for Revit 2018.msi" /qb UI_LANGUAGE=1539
LICENSE_SERVER="@server1"
```

Setup packages for additional tools are delivered together with the MagiCAD installer. It is optional, but recommended to install the following applications: MagiCAD Connect, MagiCAD Create, MagiCAD Builders Work Openings

```
msiexec /i "MagiCAD Connect for Revit 2021.msi" /qb
msiexec /i "MagiCAD Create.msi" /qb
msiexec /i "MagiCAD Builders work openings tool r2021.msi" /qb
```

## EXE INSTALLATION PACKAGE

Properties for installing MagiCAD 2021 for Revit.exe using command line are limited to UI language and installation location.

Property	Purpose	Default value
InstallFolder	The directory where the program will be installed.	C:\Program Files\MagiCAD for Revit\2021_r2021  Note: may vary depending on the language of the operating system
Language	User interface language of the program.  1512=English 1513=German 1515=French 1528=Russian 1539=Chinese	1512

### Sample installation batch files for exe package

Silent installation to default location with English UI language:

```
"MagiCAD 2021 for Revit 2021.exe" /silent
```

Silent installation, German UI language, custom location:

```
"MagiCAD 2021 for Revit 2021.exe" /silent /Language=1513
/InstallFolder="C:\Program Files\MagiCAD for Revit 2021"
```



### **Silent installation of patch package**

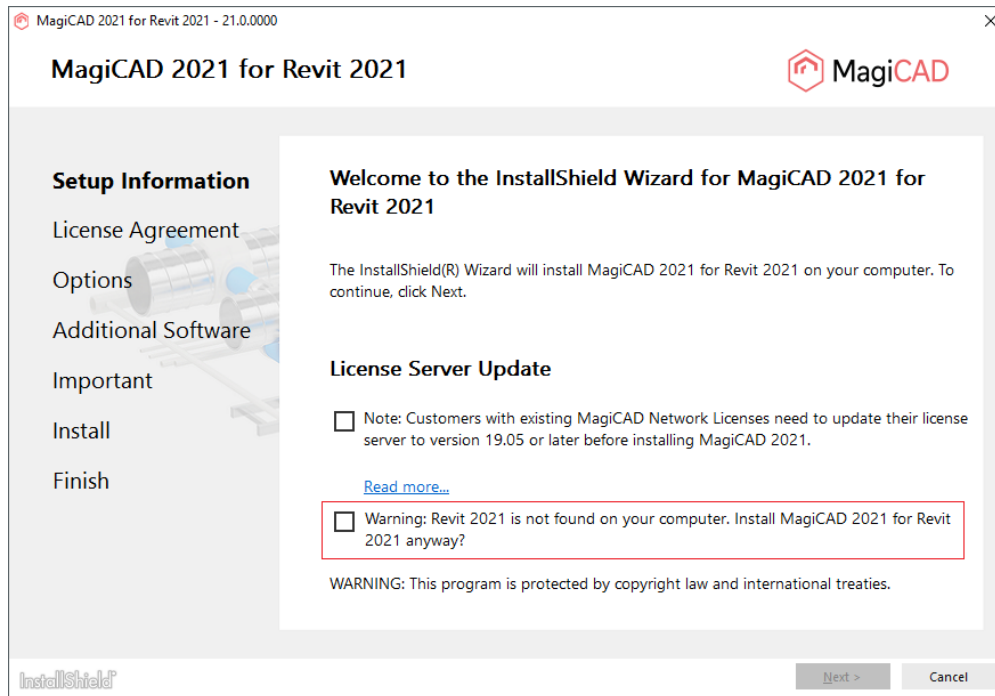
There are no parameters for patch packages, but you can install them silently:

```
"MagiCAD 2021 for Revit 2021 - Patch.exe" /silent
```

## FREQUENTLY ASKED QUESTIONS

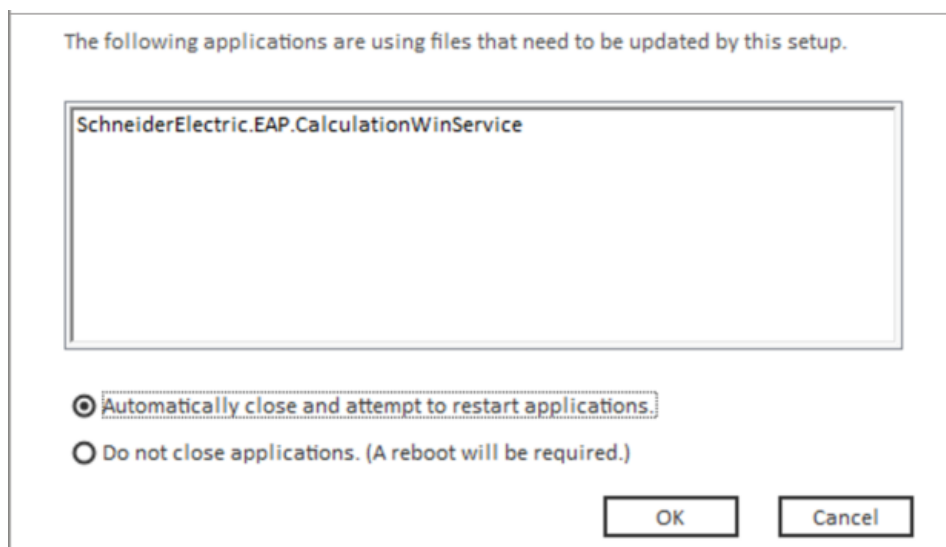
### WHY DOES THE INSTALLER DISPLAY THE WARNING "REVIT IS NOT FOUND"?

There are four installer packages: MagiCAD for Revit 2018, MagiCAD for Revit 2019, MagiCAD for Revit 2020 and MagiCAD for Revit 2021. If you are trying to install the wrong version of MagiCAD, the installer displays the following warning:



### WHY DO I GET SCHNEIDERELECTRIC SERVICE POPUP DURING INSTALLATION?

Schneider Electric Ecodial Engine is already installed with previous MagiCAD installation. Select "Automatically close..." and click OK to continue.



## SCHNEIDER ELECTRIC ECODIAL PLUGIN FOR AUTOCAD DETECTED, WHAT SHOULD I DO?

If you need MagiCAD's electrical calculations, check "Install Ecodial service anyway". After the installation, Ecodial Plugin for AutoCAD may not function anymore.

### Schneider Electric Ecodial Plugin for AutoCAD detected.

Installing the Ecodial service included in MagiCAD will override the Ecodial Plugin service. After the installation, the original Ecodial Plugin for AutoCAD may not function anymore. If you do not install the Ecodial service, MagiCAD will not include electrical calculations.

Install Ecodial service anyway

## WAS THE PATCH INSTALLED SUCCESSFULLY? I CANNOT FIND IT IN PROGRAMS AND FEATURES.

After patch installation, the MagiCAD software name in Programs and Features remains the same, but the Version number is updated.

The Release version displayed in the Comments column is also updated, e.g. MagiCAD Release: 2021. If the Comments column in Programs and Features is not visible, right-click the column title bar, select 'More...', select 'Comments' and click 'OK'.

## HOW CAN I UNINSTALL A PATCH?

You cannot uninstall only the patch installation. Uninstalling MagiCAD from Programs and Features will uninstall MagiCAD entirely.