
User's Guide



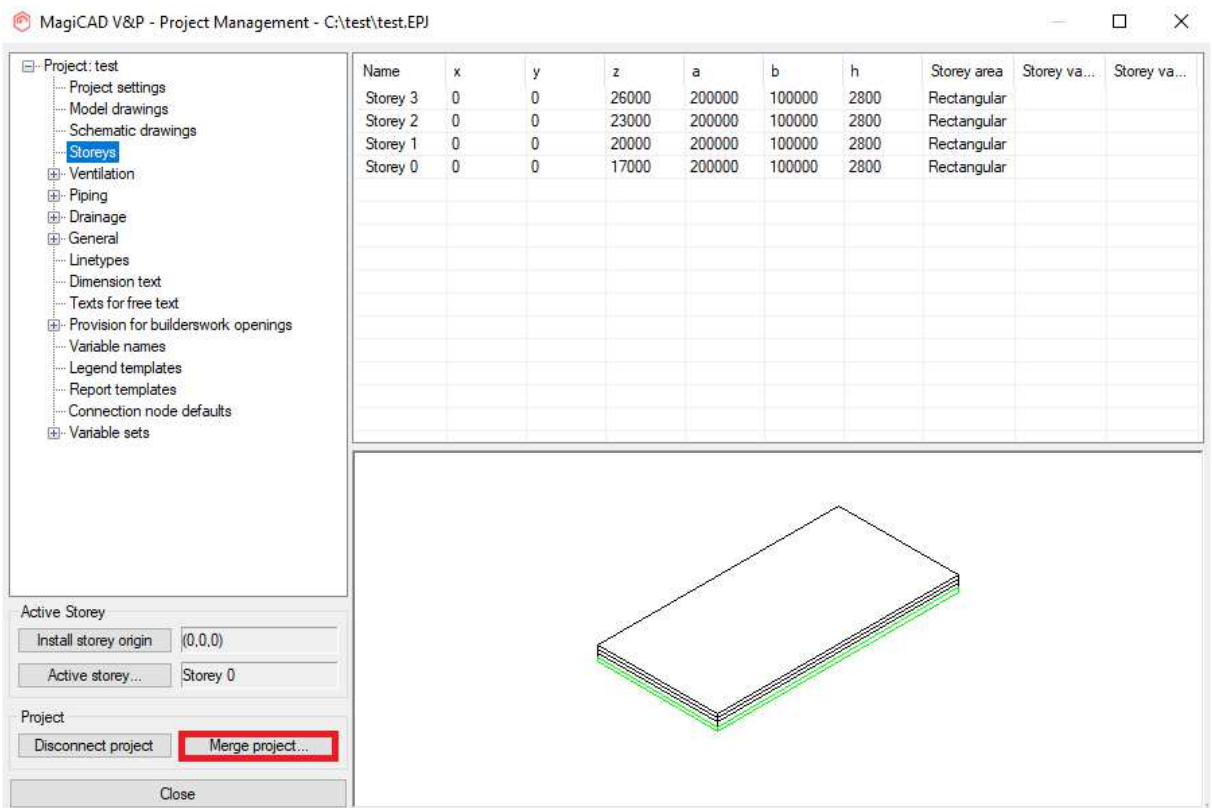
Enervent duct and fitting template instructions

Document revision 2021-11-26

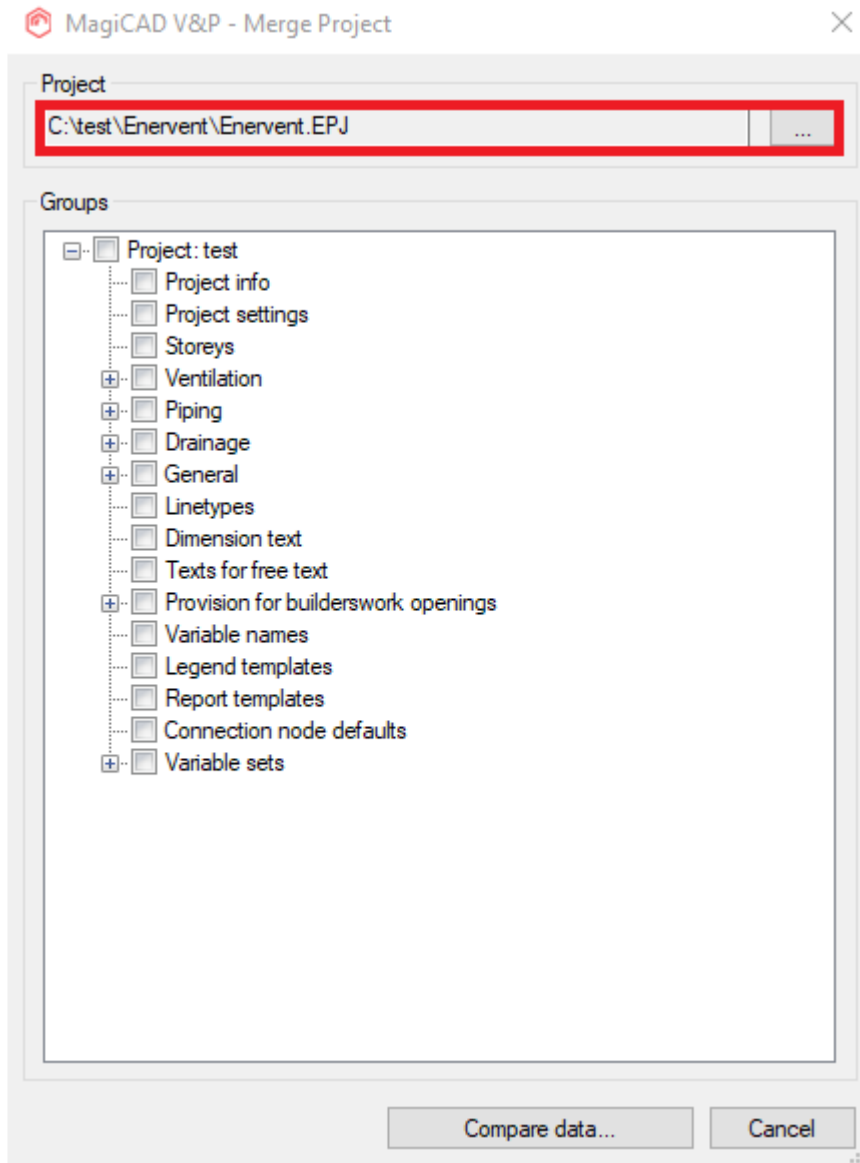
Enervent template

Taking the template into use

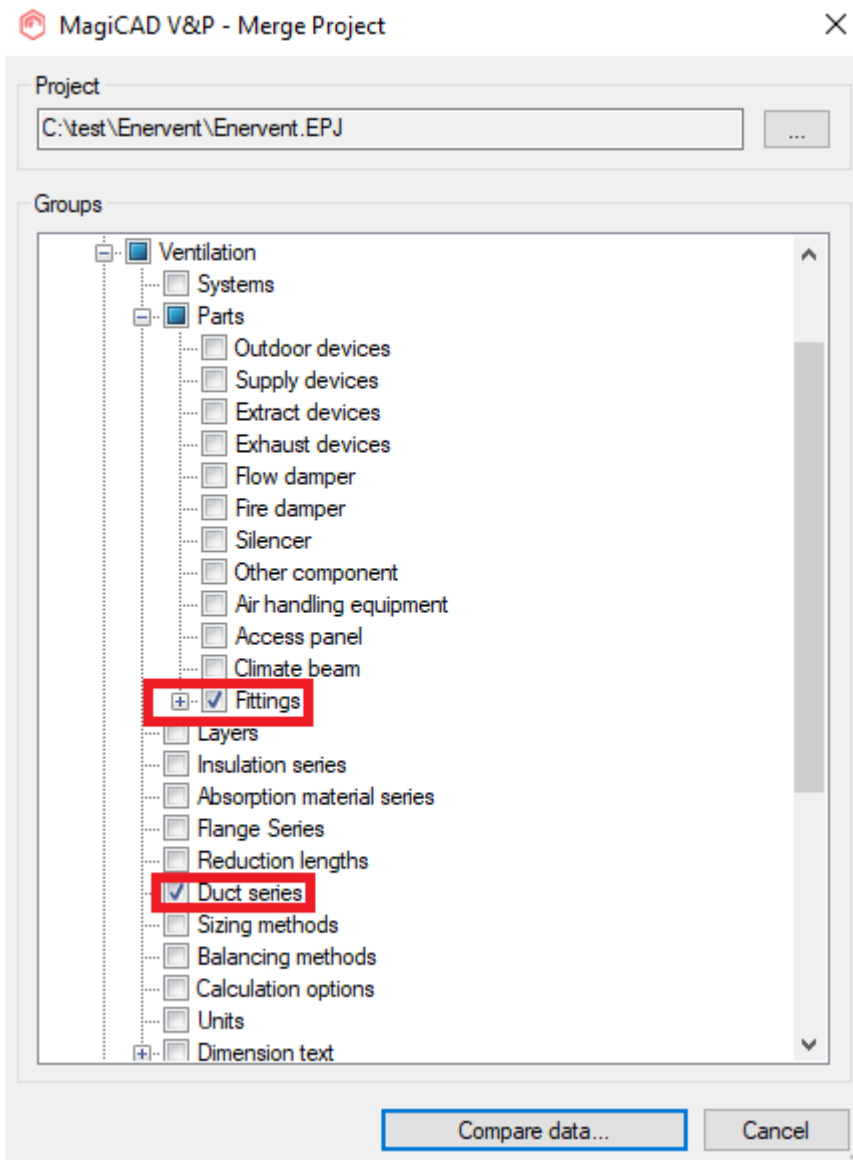
1. Download the .zip file to your computer. Unzip the file to a suitable location.
2. Start MagiCAD, open the project management window, and click “Merge project” button.



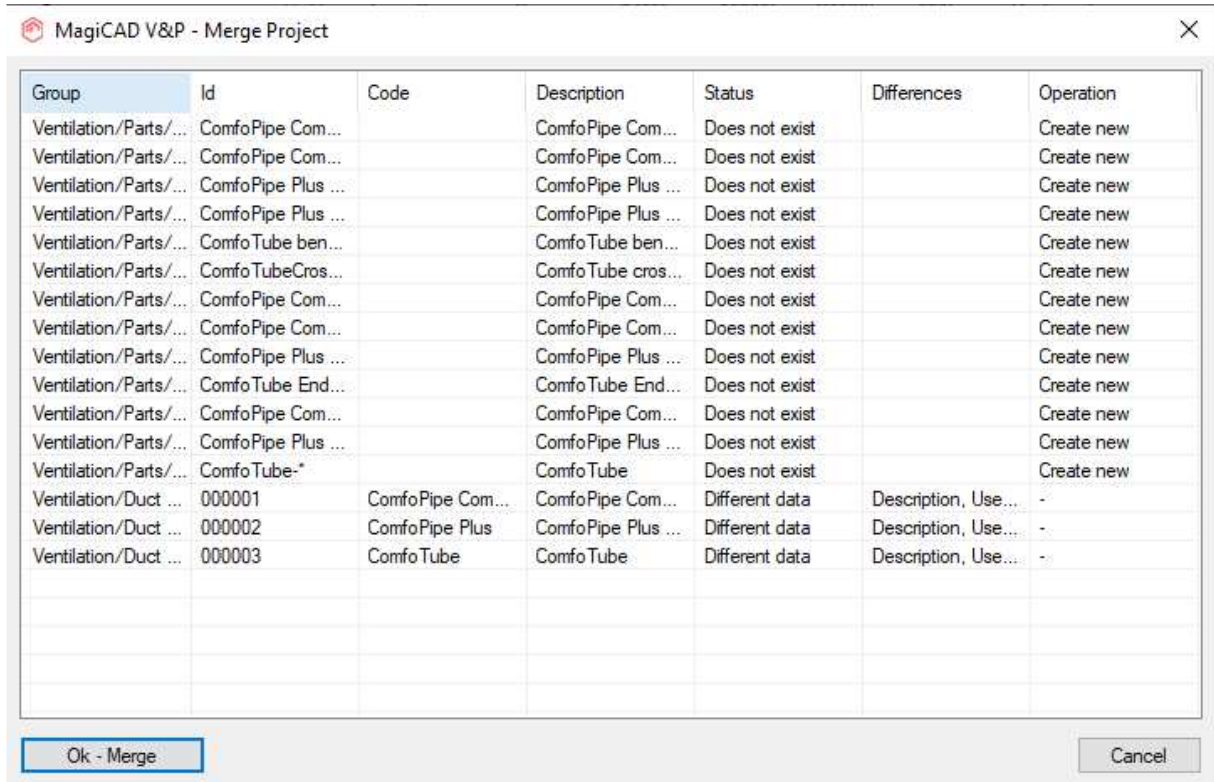
3. Change the source project file Enervent.EPJ.



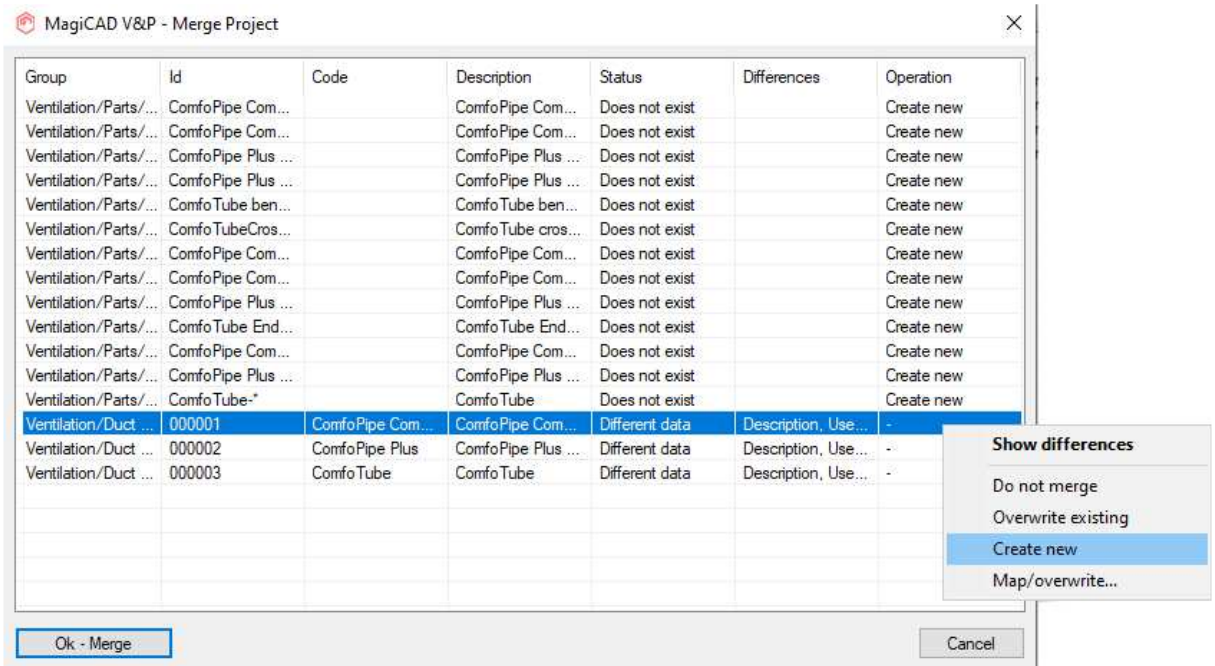
4. Check duct "Fittings" and "Duct series". Then click "Compare data" button.



5. The Merge Project window is opened.



- If the value in the column Operation is not “Create new“, select the row and click right mouse button. Opens menu with the options. Select “Create new“. Repeat for other duct series. Click “Ok – Merge“ button.



MagiCAD V&P - Merge Project

| Group | Id | Code | Description | Status | Differences | Operation |
|---------------------------------|--------------------|------------------|--------------------|----------------|---------------------|---------------------|
| Ventilation/Parts/Fittings/B... | ComfoPipe Com... | | ComfoPipe Com... | Does not exist | | Create new |
| Ventilation/Parts/Fittings/B... | ComfoPipe Com... | | ComfoPipe Com... | Does not exist | | Create new |
| Ventilation/Parts/Fittings/B... | ComfoPipe Plus ... | | ComfoPipe Plus ... | Does not exist | | Create new |
| Ventilation/Parts/Fittings/B... | ComfoPipe Plus ... | | ComfoPipe Plus ... | Does not exist | | Create new |
| Ventilation/Parts/Fittings/B... | ComfoTube ben... | | ComfoTube ben... | Does not exist | | Create new |
| Ventilation/Parts/Fittings/X... | ComfoTubeCros... | | ComfoTube cros... | Does not exist | | Create new |
| Ventilation/Parts/Fittings/J... | ComfoPipe Com... | | ComfoPipe Com... | Does not exist | | Create new |
| Ventilation/Parts/Fittings/J... | ComfoPipe Com... | | ComfoPipe Com... | Does not exist | | Create new |
| Ventilation/Parts/Fittings/J... | ComfoPipe Plus ... | | ComfoPipe Plus ... | Does not exist | | Create new |
| Ventilation/Parts/Fittings/P... | ComfoTube End... | | ComfoTube End... | Does not exist | | Create new |
| Ventilation/Parts/Fittings/D... | ComfoPipe Com... | | ComfoPipe Com... | Does not exist | | Create new |
| Ventilation/Parts/Fittings/D... | ComfoPipe Plus ... | | ComfoPipe Plus ... | Does not exist | | Create new |
| Ventilation/Parts/Fittings/D... | ComfoTube* | | ComfoTube | Does not exist | | Create new |
| Ventilation/Duct series | 000001 | ComfoPipe Com... | ComfoPipe Com... | Different data | Description, Use... | Create new (000007) |
| Ventilation/Duct series | 000002 | ComfoPipe Plus | ComfoPipe Plus ... | Different data | Description, Use... | Create new (000008) |
| Ventilation/Duct series | 000003 | ComfoTube | ComfoTube | Different data | Description, Use... | Create new (000009) |

Ok - Merge Cancel

7. Check in Project Management window, duct series are imported. Double click on them, you will get more information.

MagiCAD V&P - Project Management - C:\test\test.EPJ

Project: test

- Project settings
- Model drawings
- Schematic drawings
- Storeys
- Ventilation
 - Systems
 - Parts
 - Layers
 - Insulation series
 - Absorption material series
 - Flange Series
 - Reduction lengths
 - Duct series
 - Sizing methods
 - Balancing methods
 - Calculation options
 - Units
 - Dimension text
- Piping
- Drainage
- General
- Linetypes
- Dimension text
- Texts for free text

Active Storey

Install storey origin: (0,0,0)

Active storey...: Storey 0

Project

Disconnect project Merge project...

Close Up [Ctrl+K] Down [Ctrl+J]

| UserCode | Description | National code |
|-------------------|------------------------|---------------|
| LINDAB REKT | Lindab Rekt | |
| LINDAB SAFE | Lindab Safe | |
| Flex | Flexibel duct | |
| Circ | Circular duct | |
| Rect | Rectangular duct | |
| ComfoPipe Compact | ComfoPipe Compact duct | |
| ComfoPipe Plus | ComfoPipe Plus duct | |
| Comfo Tube | Comfo Tube | |

MagiCAD V&P - Duct Series

General

ID: Description:
 k: UserCode:
 Connection type code:
 Flange series: National code:
 Only selected flange type allowed Material:
 Flexible duct Object ID format:
 BWO size range:

Duct Sizes

| Size | Bend R/D | Fit on len | Extra len |
|------|----------|------------|-----------|
| 125 | 1.00 | 40 | 15 |
| 160 | 1.00 | 40 | 15 |
| 200 | 1.00 | 40 | 15 |

Products

| Part type | User ... | Product | S.. |
|------------|----------|------------------------------------|-----|
| Duct | | ComfoPipe Compact duct | |
| Joint part | | ComfoPipe Compact double connector | |
| Joint part | | ComfoPipe Compact connector | |
| Bend | | ComfoPipe Compact bend-90 | |
| Bend | | ComfoPipe Compact bend-45 | |

Product variables

| Variable | Value |
|----------|-------|
| P1 | |
| P2 | |
| P3 | |
| P4 | |
| P5 | |
| P6 | |
| P7 | |
| P8 | |
| P9 | |
| P10 | |
| P11 | |
| P12 | |
| P13 | |
| P14 | |
| P15 | |

Cut lengths priority order:

Tolerance before tap: mm Do not split if the result is shorter than: mm

Ok Cancel

MagiCAD V&P - Duct Series

General

ID: 000008 Description: ComfoPipe Plus duct
 k: 0.15000 UserCode: ComfoPipe Plus
 Connection type code: National code:
 Flange series: - Default - Material:
 Only selected flange type allowed Object ID format:
 Flexible duct BWO size range:

Product variables

| Variable | Value |
|----------|-------|
| P1 | |
| P2 | |
| P3 | |
| P4 | |
| P5 | |
| P6 | |
| P7 | |
| P8 | |
| P9 | |
| P10 | |
| P11 | |
| P12 | |
| P13 | |
| P14 | |
| P15 | |

Duct Sizes

| Size | Bend R/D | Fit on len | Extra len |
|------|----------|------------|-----------|
| 160 | 1.00 | 40 | 15 |
| 200 | 1.00 | 40 | 15 |

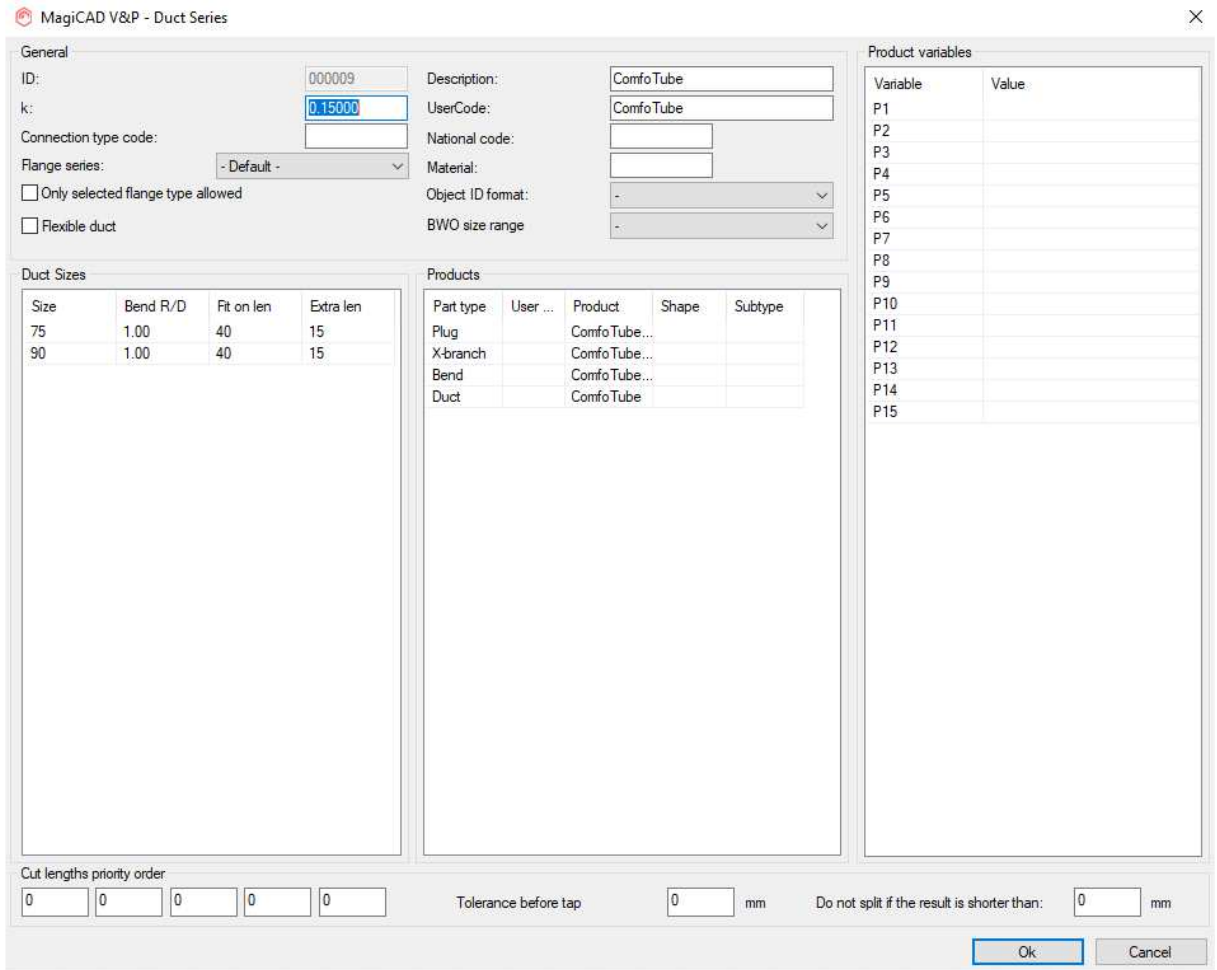
Products

| Part type | User ... | Product | Shape | Subtype |
|------------|----------|---------------|-------|---------|
| Duct | | ComfoPipe ... | | |
| Bend | | ComfoPipe ... | | |
| Bend | | ComfoPipe ... | | |
| Joint part | | ComfoPipe ... | | |

Cut lengths priority order

0 0 0 0 0 Tolerance before tap 0 mm Do not split if the result is shorter than: 0 mm

Ok Cancel



8. Drawing duct with Enervent series. Select the duct from pull down menu of Duct Series.

