



TROX EPF Plugin

User guide

20/09/2021

Content

1	GENERAL	3
1.1	About this document	3
1.2	Installing the software.....	3
1.2.1	Required third-party software.....	3
1.2.2	Installation.....	3
1.3	Starting the program	4
2	FUNCTIONS	4
2.1	Insert Product.....	4
2.1.1	Description of insert product command (Plain Revit).....	5
2.1.2	Description of insert product command (MagiCAD for Revit).....	7
2.1.3	Description of insert product command for climate beams with extract connections	8

1 General

1.1 About this document

This document contains instructions on using TROX EPF Revit / MagiCAD for Revit plugin. TROX EPF Revit plugin integrates TROX EPF configurator into Revit / MagiCAD for Revit. It allows user to find and insert TROX climate beam products into Revit project.

1.2 Installing the software

1.2.1 Required third-party software

TROX EPF plugin works with the following Revit and MagiCAD for Revit versions:

Revit

- Revit 2018, 2019, 2020, 2021 and 2022

MagiCAD (optional)

- MagiCAD for Revit 2021 (with Revit 2018, 2019, 2020, 2021)
- MagiCAD for Revit 2022 (with Revit 2018, 2019, 2020, 2021, 2022)

1.2.2 Installation

Administrator privileges are recommended for installation.

1. Ensure that you have required Revit version installed on your computer.
2. Install TROX EPF Revit plugin. Installation package can be downloaded from here:

<https://portal.magicad.com/>

1.3 Starting the program

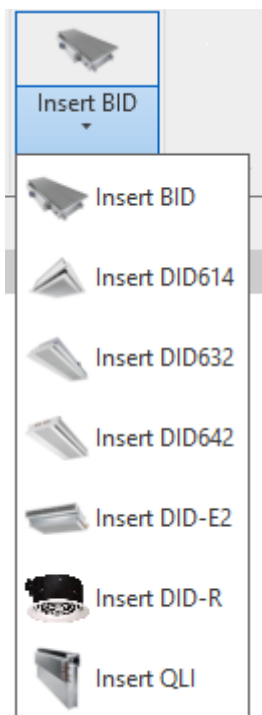
The plugin is automatically loaded and is ready to be used once Revit is started next time after the plugin is installed. If you installed the plugin with MagiCAD plugin manager, the plugin is ready to be used without restarting Revit / MagiCAD for Revit.

TROX EPF plugin ribbon panel can be found from Add-ins tab:



2 Functions

TROX EPF plugin contains commands to insert different TROX climate beam products into Revit project. Different products can be found from the drop down menu:



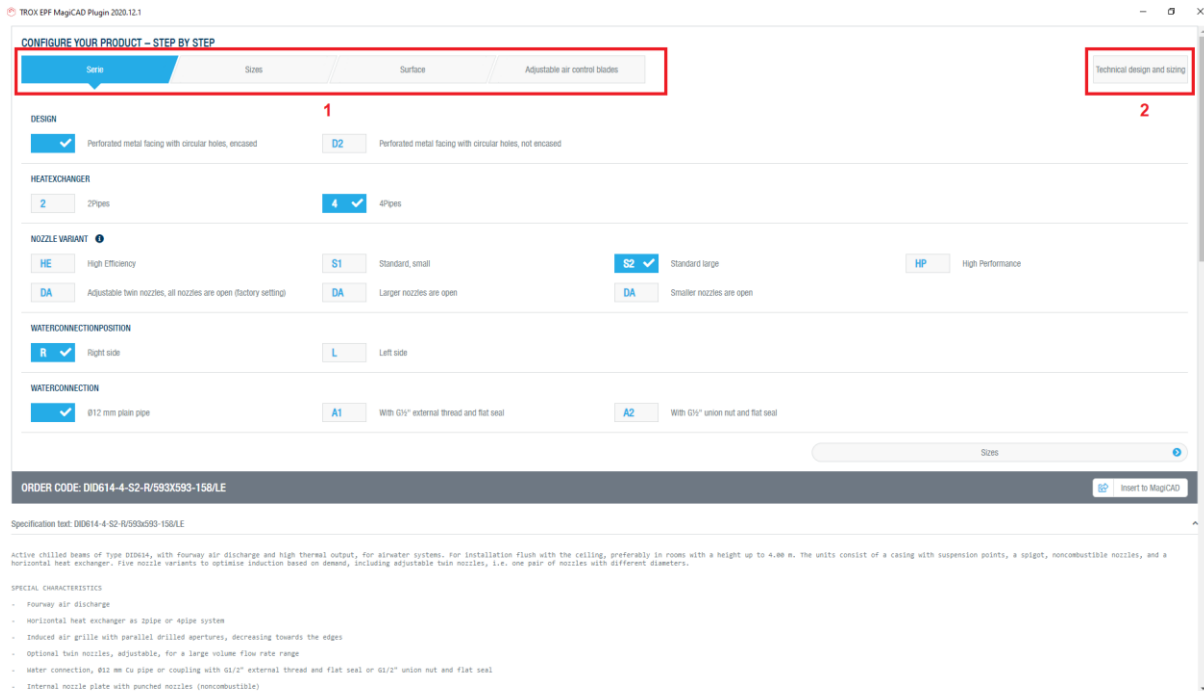
2.1 Insert Product

Clicking any of the products will open TROX EPF configurator for selecting suitable products into Revit project.

2.1.1 Description of insert product command (Plain Revit)

Follow these steps to insert product from TROX EPF into Revit project:

1. Click the “Insert <Product Name>” -button from the TROX EPF ribbon panel (Add-ins tab).
Once the operation is started the plugin opens TROX EPF configurator:



2. User can configure the different aspects of the product from the tabs (1). Technical values can be configured in the “Technical design and sizing” tab (2).

ORDER CODE: DID614-4-S2-R/593x593-158/LE

- Once the product is configured, user can continue by clicking “Insert to MagiCAD” -button. In the “Technical design and sizing” tab, the button can be found by scrolling down.
- Plugin opens following dialog:

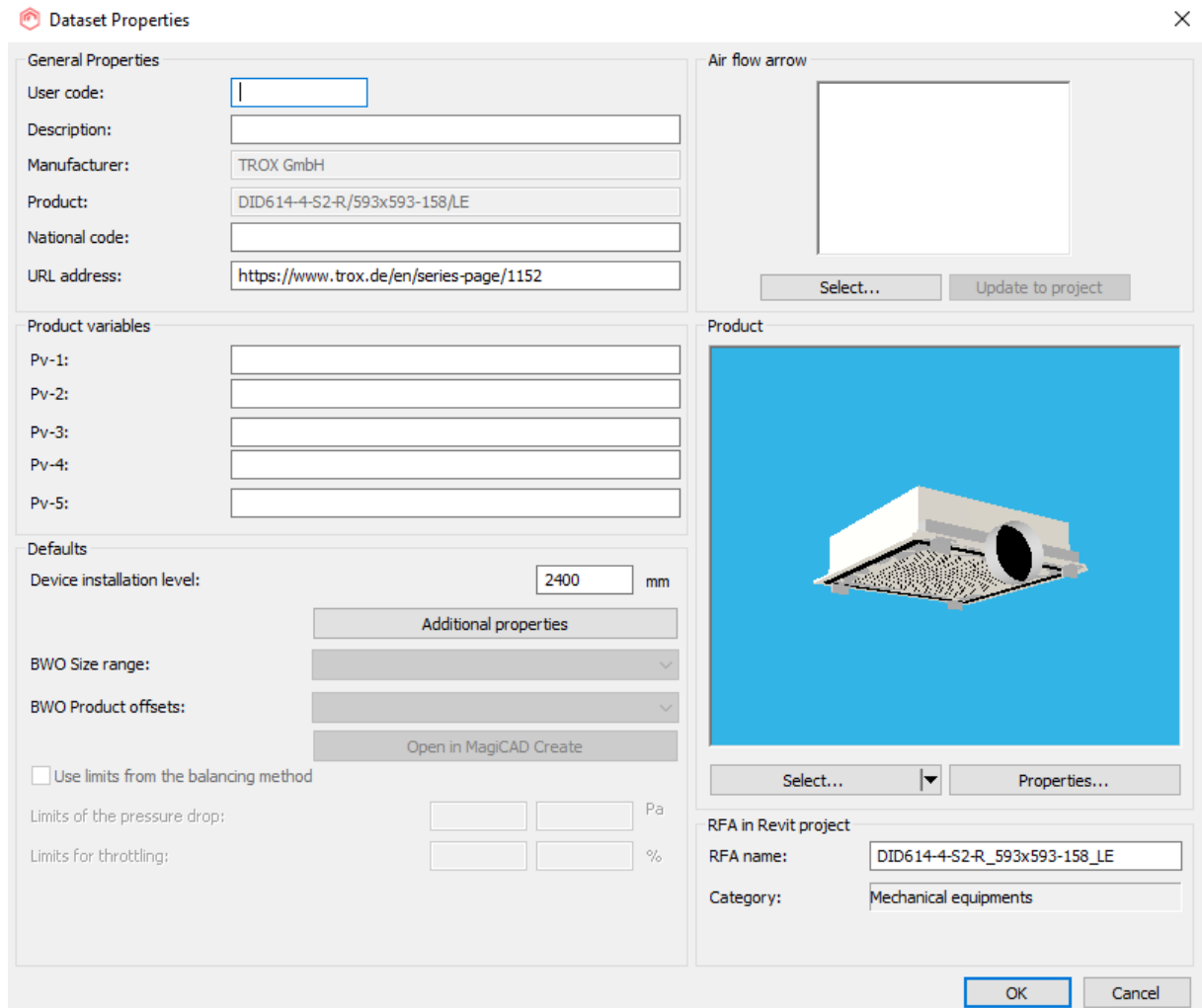
Product	Variant	System	Airflow (l/s)	C. Power (w)	C. Supply System	H. Power (w)	H. Supply System	HeightLevel (mm)
DID614-4-S2-R/593x593-1	DID614-4-S2-R/593x593-1		37.77778	424	Cooling supp.	199	Heating supp.	0

The dialog displays product code (1), variant code (2), air supply system (3), airflow (4), cooling power (5), cooling supply system (6), heating power (7), heating supply system (8) and height level (9). Product and variant code, airflow, cooling power and heating power are filled with data from EPF and cannot be edited. Use can change the systems and select the installation height. After that user proceeds by clicking the Insert -button, which initiates the insert operation to active Revit view. User can freely place the product into wanted position:

2.1.2 Description of insert product command (MagiCAD for Revit)

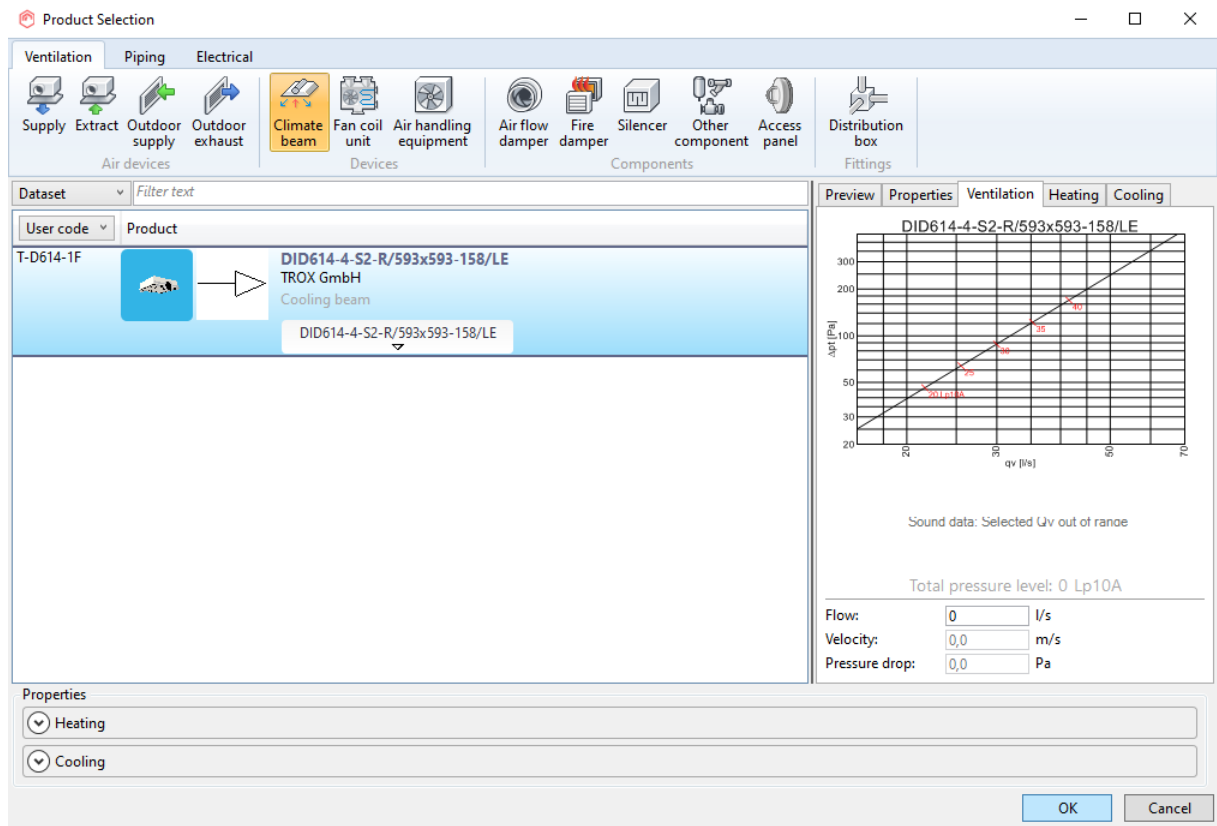
The insert product command workflow differs little bit if MagiCAD for Revit is installed on top of Revit. The steps are identical to plain Revit steps until step 3.

1. After the product is chosen in TROX EPF and “Insert to MagiCAD” -button is clicked, plugin loads MagiCAD Dataset dialog:



From the dataset properties dialog you can define for example 2D symbols for the product and for airflow arrows. Once ready, proceed by clicking OK -button.

2. MagiCAD Insert product view is opened. Notice that the working point should be defined in this dialog from the ventilation tab in the right side of the dialog. Once ready, user can start the insert operation by clicking the OK -button:



3. User places the product to the project with MagiCADs product installation feature:

2.1.3 Description of insert product command for climate beams with extract connections

TROX DID632 and DID642 are products that may have additional extract connection. When a product with the extract connection is chosen in EPF configurator, it has special handling in the plugin. The insert process is similar to the insert process of products to plain Revit, even when MagiCAD is installed.

Climate beams with extract connection are installed to Revit project as assemblies, which contain two instances. One of the instances is the main climate beam and the other is the extract connection.

The connectors in assemblies can be selected by holding down tab key while selecting them.

Extra connectors are added without data. Therefore MagiCAD for Revit gives empty results for this connectors in the Balancing calculation. Air flow and pressure drop values can be added manually on MagiCAD for Revit.

The additional connections can be seen like this:

