



# **Furhoffs MagiCAD plugin for AutoCAD**

User guide

12/04/2022

**Content**

<b>GENERAL</b> .....	<b>3</b>
About this document.....	3
Installing the software .....	3
Required third-party software .....	3
Installation.....	3
Starting the program .....	4
<b>FUNCTIONS</b> .....	<b>5</b>
Furhoffs toolbar .....	5

## General

### About this document

This document contains instructions on using *Furhoffs MagiCAD plugin*. *Furhoffs MagiCAD plugin* enables easier selection from various types of floor drains and exporting them into MagiCAD project and drawing.

### Installing the software

#### Required third-party software

Furhoffs MagiCAD plugin works with the following MagiCAD for AutoCAD versions

- MagiCAD 2022 and AutoCAD 2017-2022
- MagiCAD 2023 and AutoCAD 2019-2023

### Installation

1. Download setup file from  
<https://portal.magicad.com/download/ProductSearch?searchStr=Furhoffs&categoryId=3>
2. Run the Furhoffs MagiCAD plug-in installer on your workstation

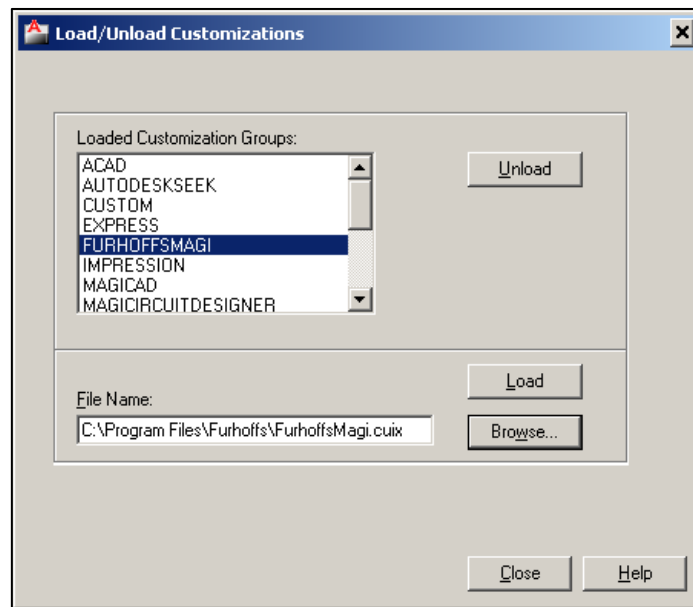
Administrator privileges are recommended for installation.

**Note if you have several AutoCAD versions on your workstation:** Before you run the installation program, start MagiCAD to make sure that *Furhoffs MagiCAD Plugin* installs on the same AutoCAD platform as MagiCAD.

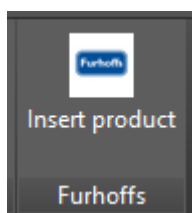
## Starting the program

Before you start using Furhoffs MagiCAD Plugin, start MagiCAD and open a Ventilation and Piping project.

If the plugin ribbon button or toolbar is not visible in AutoCAD, you need to load the customization file (.cuix) manually. Run **CULOAD** (or **MENULOAD**) in AutoCAD, and browse the customization file from the directory where you installed the program (by default, the directory is *C:\Program Files\Furhoffs*).



When you select Load, Furhoffs toolbar and ribbon button appears on the desktop.



Next time you use AutoCAD, the customization file is automatically loaded.

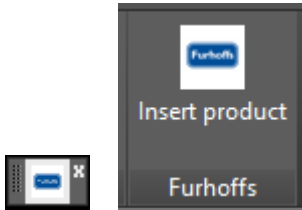
### **Information for network administrators:**

Plugin requires connection to Furhoffs web site. Internet Explorer control is used to browse web pages from <http://magicad.furhoffs.se/Furhoffs/Main.aspx>. Standard HTTP GET (TCP, default port 80 should be used) method is used to retrieve files from the server. GET response includes file (mime application/octet-stream). Your network firewall should allow such connections.

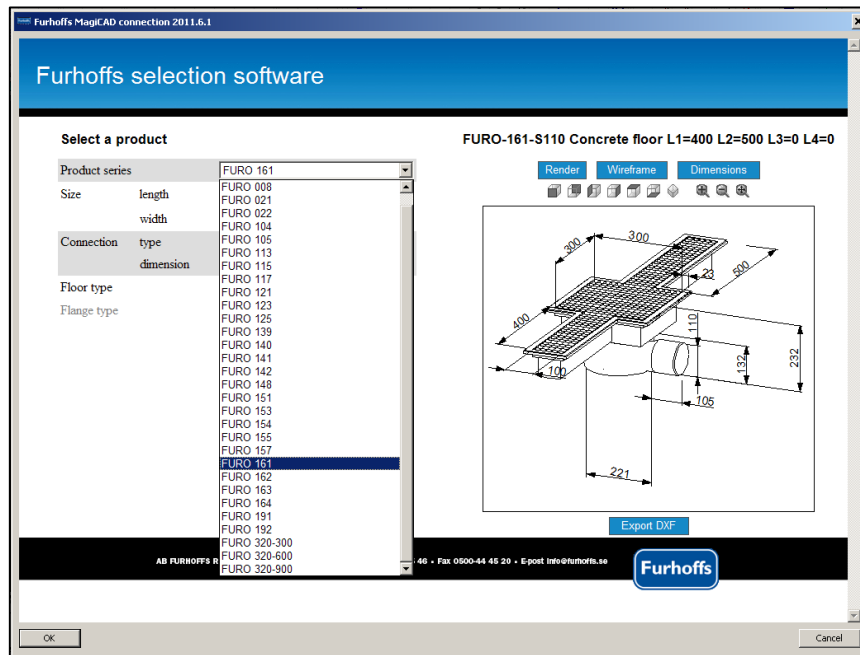
## Functions

### Furhoffs toolbar

Start Furhoffs MagiCAD plugin by selecting toolbar or ribbon panel button:

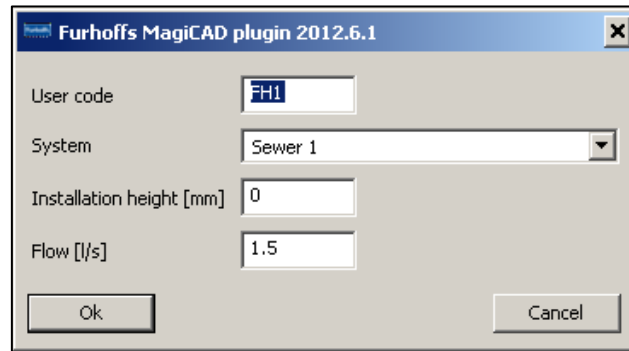


After that Furhoffs selection software will open.



Select product. There is possibility to change values like size, connection type and floor type. After desired product is set, click “Ok”-button to export it to MagiCAD.

Before product is inserted to drawing, you may change default values of the product.



Place product to drawing and continue designing in MagiCAD.

