



FläktGroup Revit Plugin

User guide

12/05/2022

Content

ABOUT THIS DOCUMENT	3
INSTALLING THE SOFTWARE	3
Required Revit / MagiCAD version.....	3
Installation.....	3
STARTING THE PROGRAM	4
INSERTING FLÄKTGROUP PRODUCTS FROM EXSELAIR	4
INSERTING FLÄKTGROUP PRODUCTS FROM ACON	10

About this document

The purpose of FläktGroup Revit plugin is to use SELECT or Acon directly from MagiCAD for Revit or Revit as a product configurator when adding FläktGroup products into project.

FläktGroup Revit Plugin calls FläktGroup selection software (SELECT/Acon) with input parameters to calculate the device, transfer device geometry, technical data and calculation results from SELECT/Acon into Revit.

Installing the software

Required Revit / MagiCAD version

Revit

- Revit 2018 - 2023

MagiCAD (optional)

- MagiCAD for Revit 2022 (with Revit 2018 - 2022)
- MagiCAD for Revit 2023 (with Revit 2019 - 2023)

Installation

1. Ensure that you have required Revit version installed on your computer
2. Install FläktGroup Revit plugin. Installation package can be downloaded from

<https://portal.magicad.com/download/ProductSearch?searchStr=Fläkt&categoryId=3>

The 64-bit version of the program is installed by running the installation program.
Administrator privileges are recommended for installation.

Information for network administrators:

Plugin requires connection to FläktGroup web site. EO.WebBrowser for .NET is used to browse to the web page. Standard HTTP GET (TCP, default port 80 should be used) method is used to retrieve files from the server. GET response includes file (mime application/octet-stream). Your network firewall should allow such connections.

Starting the program

After running the installation, FläktGroup panel appears in Revit Add-Ins ribbon tab and user can select which type of product to export.

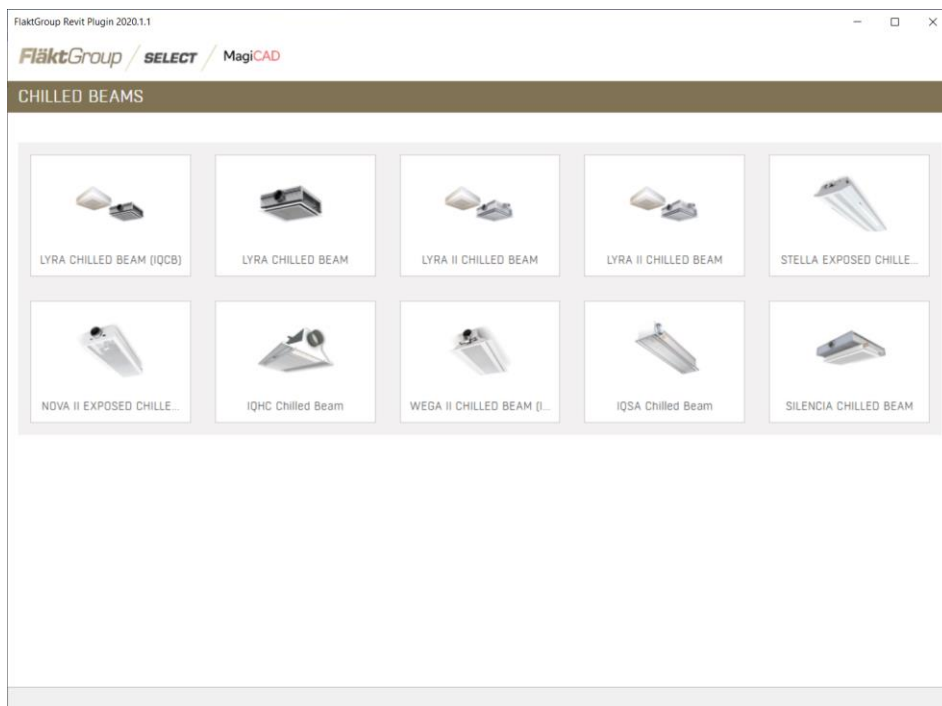


Inserting FläktGroup products from ExSelAir

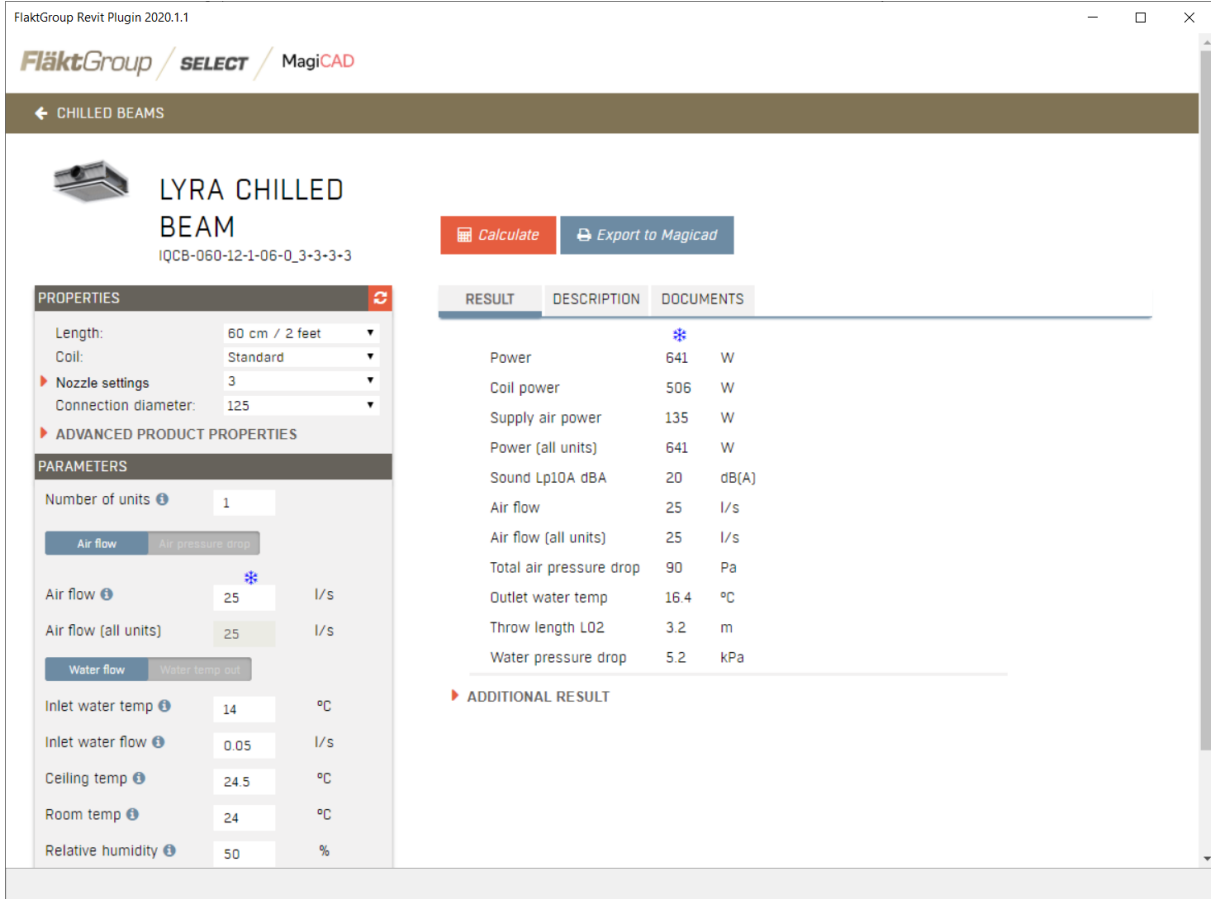
In order to add FläktGroup beam, click Revit Add-Ins ribbon tab and Chilled beam button in FläktGroup panel and SELECT program will open



1. After SELECT has started, the right chilled beam can be selected from the page.



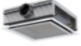
2. The appropriate product variant should be configured on SELECT Calculation page.



FlaktGroup Revit Plugin 2020.1.1

FlaktGroup / SELECT / MagiCAD

← CHILLED BEAMS

 **LYRA CHILLED BEAM**
 IQCB-060-12-1-06-0_3-3-3-3

[Calculate](#) [Export to MagiCAD](#)

RESULT	DESCRIPTION	DOCUMENTS
		*
Power	641	W
Coil power	506	W
Supply air power	135	W
Power (all units)	641	W
Sound Lp10A dBA	20	dB(A)
Air flow	25	l/s
Air flow (all units)	25	l/s
Total air pressure drop	90	Pa
Outlet water temp	16.4	°C
Throw length LQ2	3.2	m
Water pressure drop	5.2	kPa

▶ ADDITIONAL RESULT

PROPERTIES

Length: 60 cm / 2 feet

Coil: Standard

▶ Nozzle settings: 3

Connection diameter: 125

▶ ADVANCED PRODUCT PROPERTIES

PARAMETERS

Number of units: 1

Air flow: 25 l/s

Air pressure drop: *

Air flow (all units): 25 l/s

Water flow: *

Water temp out: *

Inlet water temp: 14 °C

Inlet water flow: 0.05 l/s

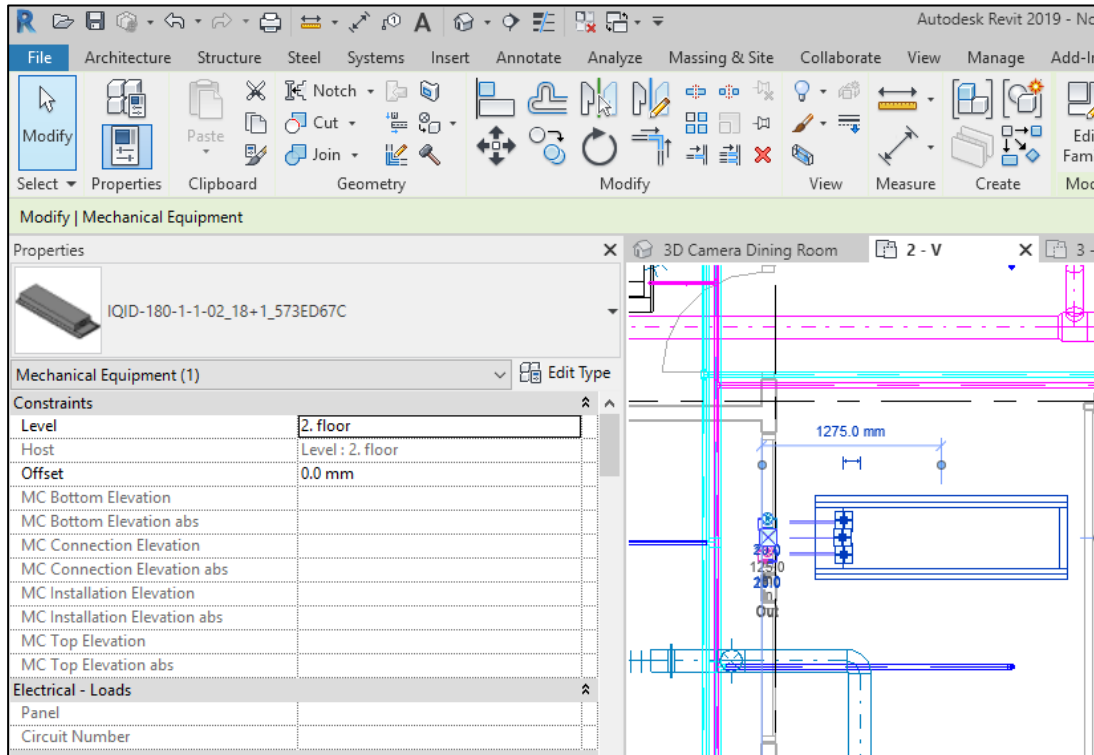
Ceiling temp: 24.5 °C

Room temp: 24 °C

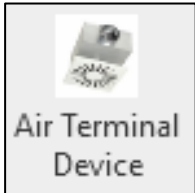
Relative humidity: 50 %

3. Export to MagiCAD button is visible if product is possible to transfer to MagiCAD. After clicking it, the SELECT is closed and the product is exported to MagiCAD.

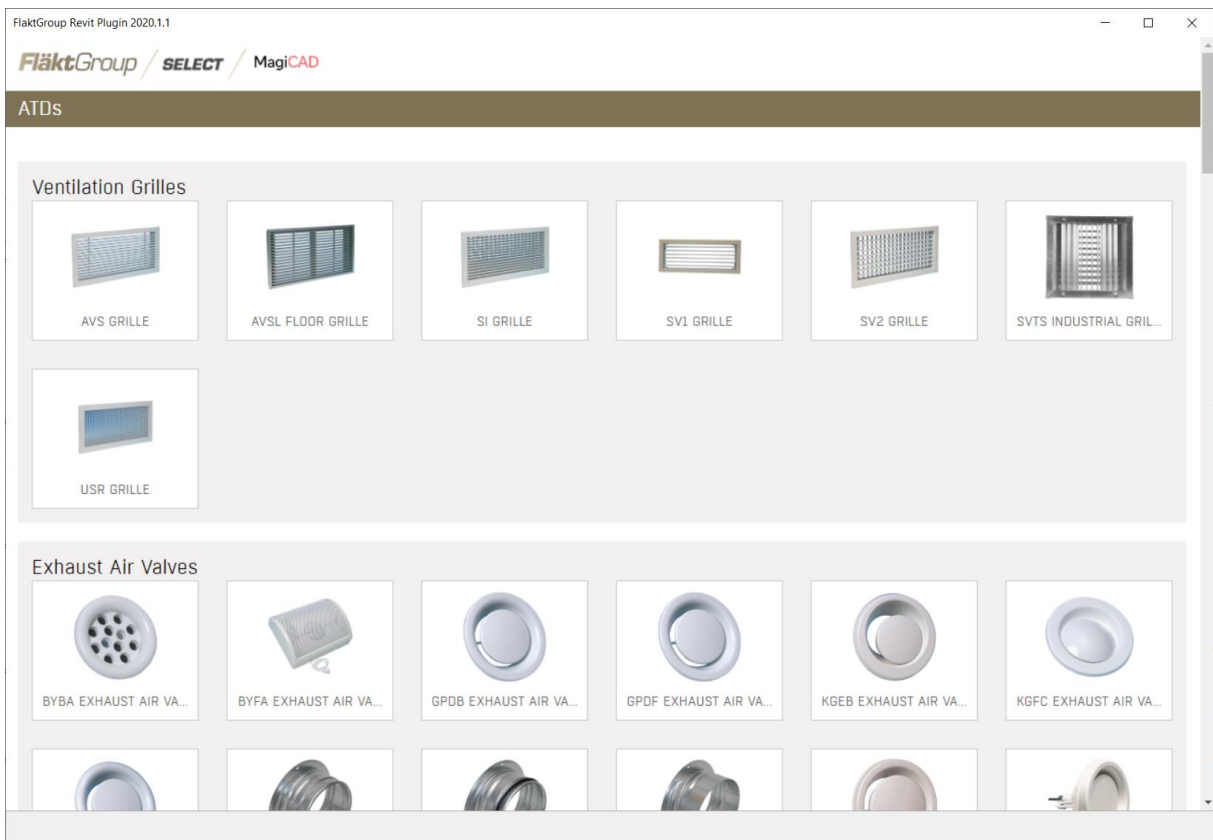
- Product is now exported to MagiCAD for Revit / Revit and user can continue working with MagiCAD / Revit. E.g. connect it to duct system and view product properties.



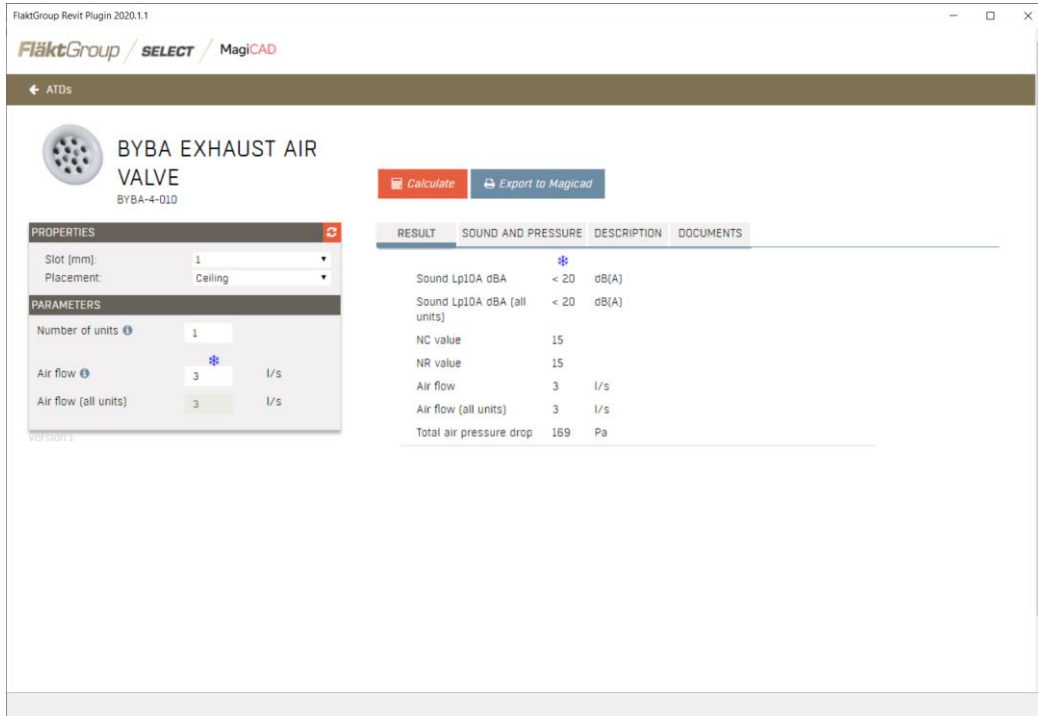
In order to add FläktGroup air terminal device, click Revit Add-Ins ribbon tab and Air Terminal Device button in FläktGroup panel and SELECT program will open



1. After SELECT has started, the right air terminal device can be selected from the product page.



- The appropriate product variant should be configured on SELECT Calculation page.



FlaktGroup Revit Plugin 2020.1.1

FlaktGroup / SELECT / MagiCAD

← ATDs

BYBA EXHAUST AIR VALVE
BYBA-4-010

Calculate Export to MagiCAD

PROPERTIES

Slot (mm): 1
Placement: Ceiling

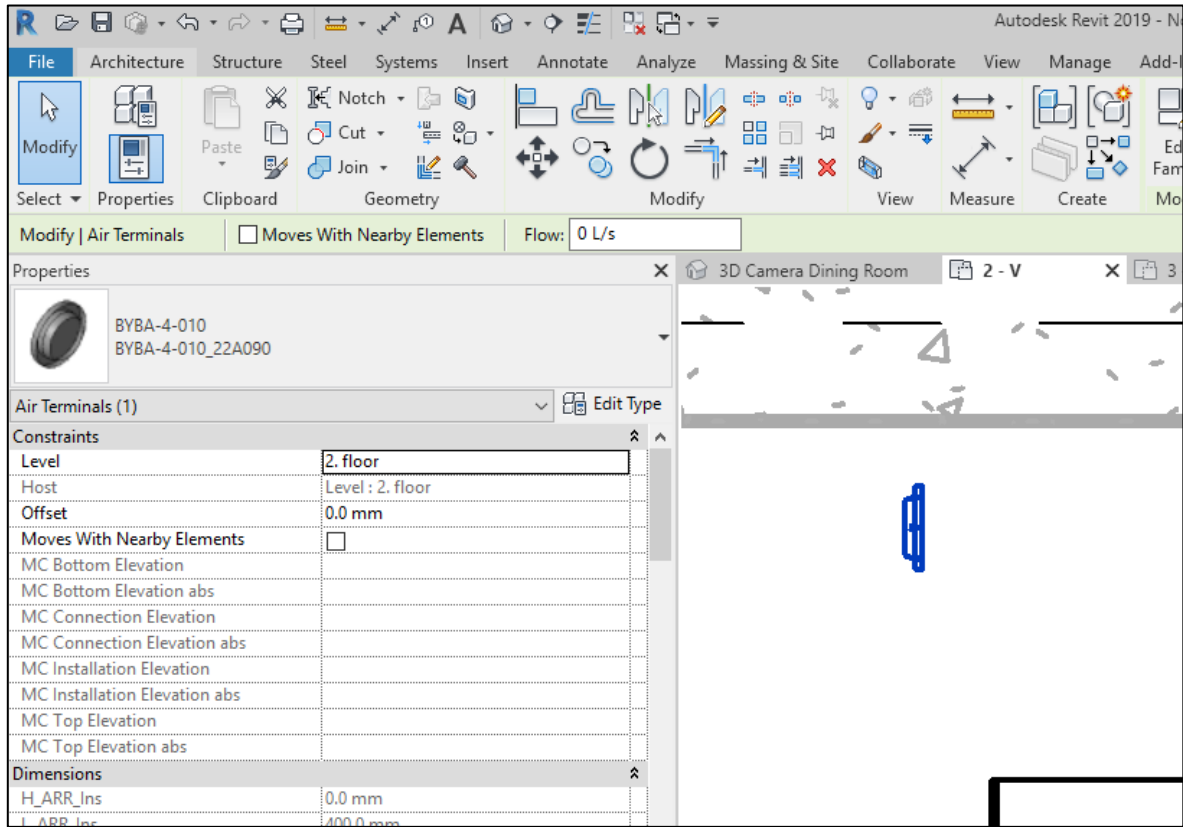
PARAMETERS

Number of units: 1
Air flow: 3 l/s
Air flow (all units): 3 l/s

RESULT	SOUND AND PRESSURE	DESCRIPTION	DOCUMENTS
Sound Lp10A dBA	< 20	dB(A)	
Sound Lp10A dBA (all units)	< 20	dB(A)	
NC value	15		
NR value	15		
Air flow	3	l/s	
Air flow (all units)	3	l/s	
Total air pressure drop	169	Pa	

- Export to MagiCAD button is enabled if it is possible to transfer the product to MagiCAD.

- Product is now exported to MagiCAD for Revit / Revit and user can continue working with MagiCAD / Revit. E.g. connect it to duct system and view product properties.

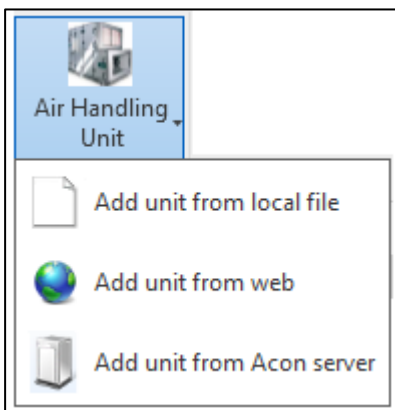


Inserting FläktGroup products from Acon

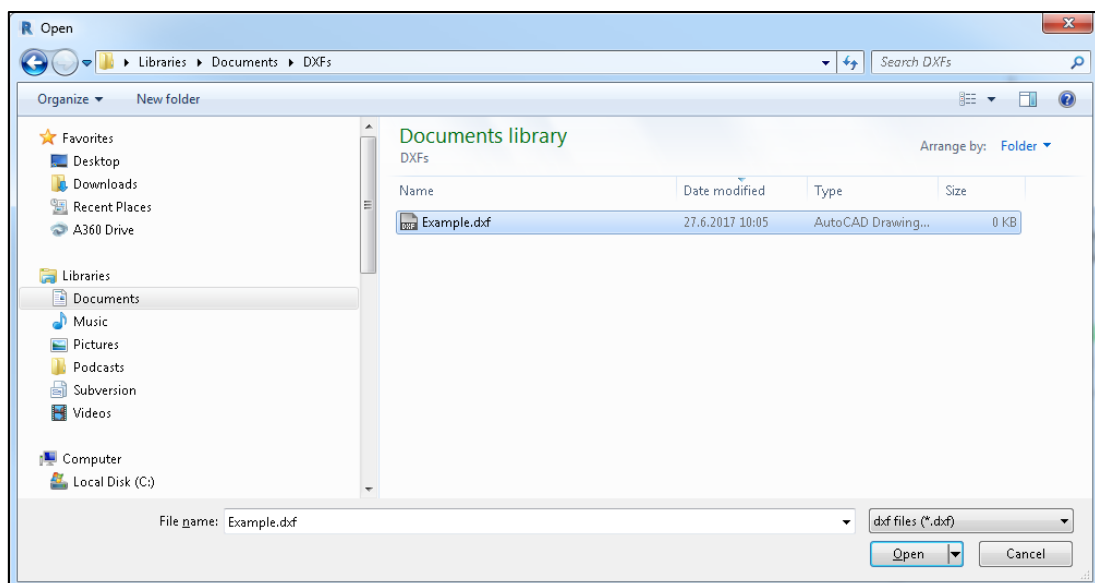
In order to add FläktGroup air handling unit, click Revit Add-Ins ribbon tab and Air Handling Unit button in FläktGroup panel.



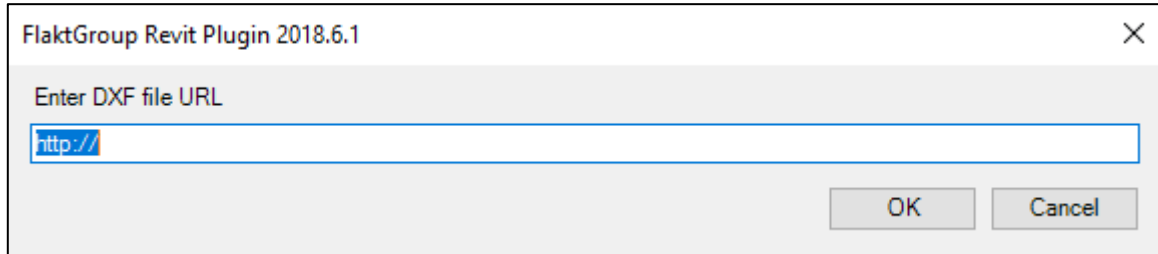
1. Select how you want to import unit to Revit from options.



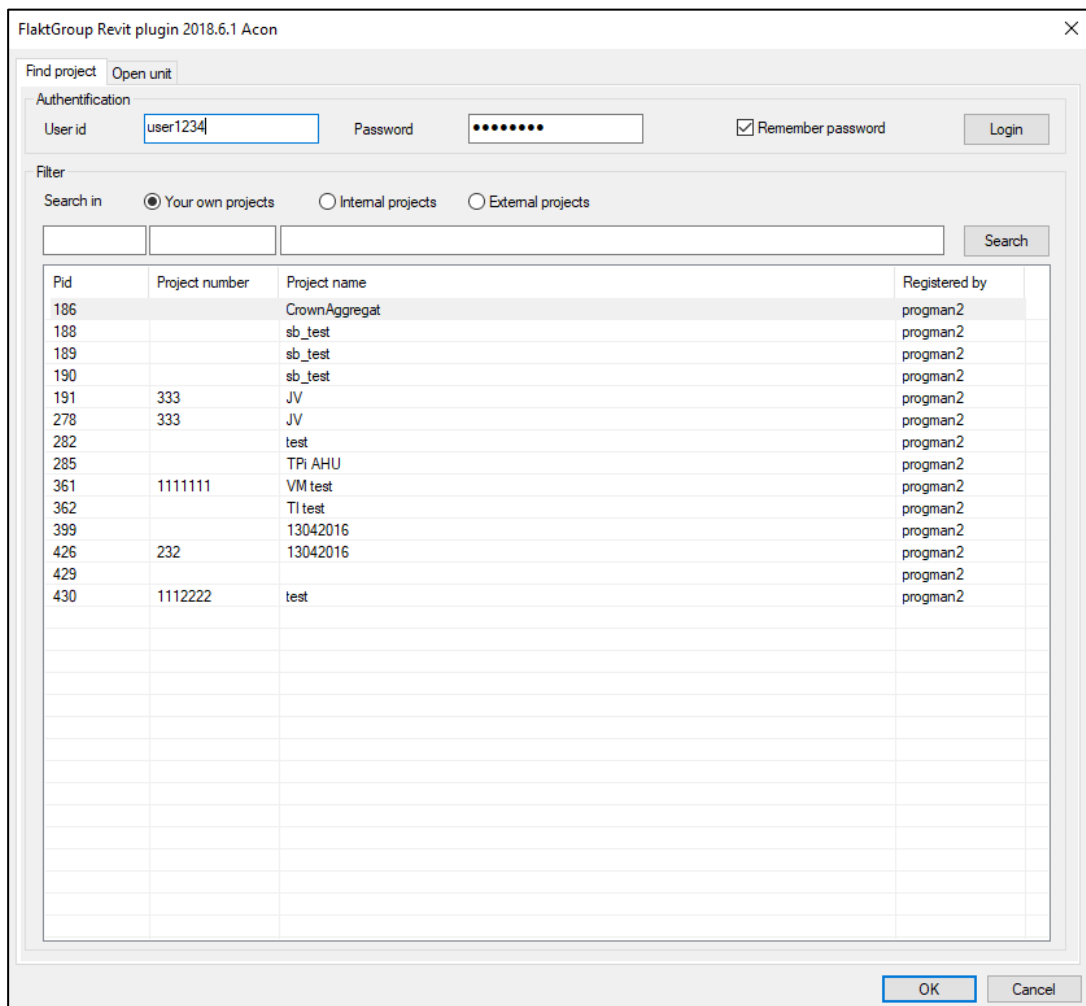
2. Add unit from local file. Select unit's dxf-file provided by Acon. Unit must be saved with 3D - option, otherwise Revit cannot read the file.



3. Add unit from web. You need the URL address of the unit to get

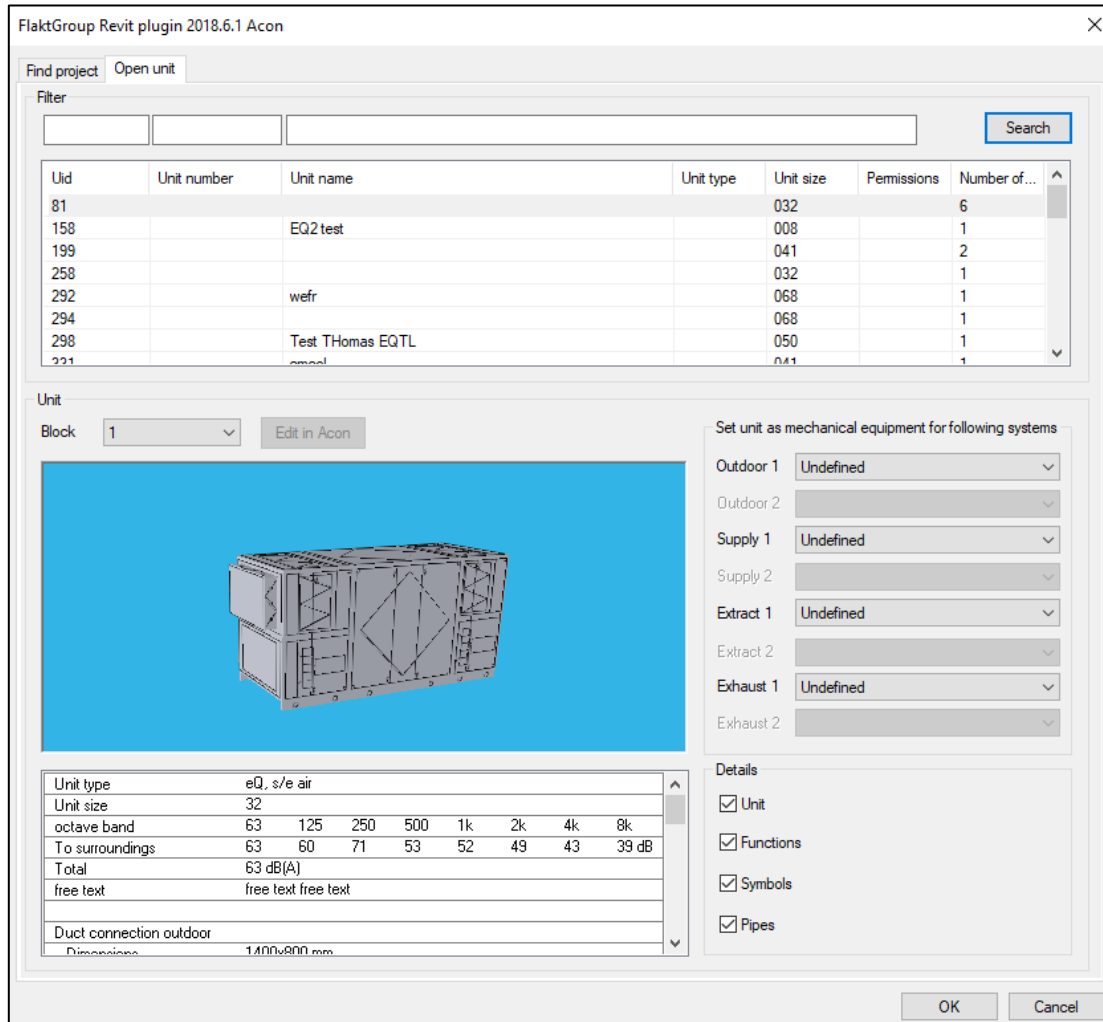


4. Add unit from Acon server. Input user id and password which are same than in Acon Air Handling Unit program and login. Then select project from list.



Pid	Project number	Project name	Registered by
186		CrownAggregat	progman2
188		sb_test	progman2
189		sb_test	progman2
190		sb_test	progman2
191	333	JV	progman2
278	333	JV	progman2
282		test	progman2
285		TPI AHU	progman2
361	1111111	VM test	progman2
362		TI test	progman2
399		13042016	progman2
426	232	13042016	progman2
429			progman2
430	1112222	test	progman2

5. Unit can be selected from the list. If AHU has also duct component, those can be selected in Block combo.



After selections, click Ok and insert Ahu to Revit. Product is now exported to MagiCAD for Revit / Revit and user can continue working with MagiCAD / Revit. E.g. connect it to duct system and view product properties.